

Product Datasheet

TLR9 Antibody (26C593.2) [Janelia Fluor® 549] NBP2-24729JF549

Unit Size: 0.1 ml

Store at 4C in the dark.

www.novusbio.com



technical@novusbio.com

Protocols, Publications, Related Products, Reviews, Research Tools and Images at:
www.novusbio.com/NBP2-24729JF549

Updated 10/23/2024 v.20.1

Earn rewards for product
reviews and publications.

Submit a publication at www.novusbio.com/publications

Submit a review at www.novusbio.com/reviews/destination/NBP2-24729JF549



NBP2-24729JF549

TLR9 Antibody (26C593.2) [Janelia Fluor® 549]

Product Information	
Unit Size	0.1 ml
Concentration	Please see the vial label for concentration. If unlisted please contact technical services.
Storage	Store at 4C in the dark.
Clonality	Monoclonal
Clone	26C593.2
Preservative	0.05% Sodium Azide
Isotype	IgG1 Kappa
Conjugate	Janelia Fluor 549
Purity	Protein G purified
Buffer	50mM Sodium Borate

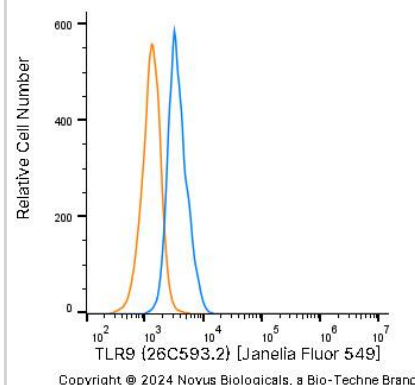
Product Description	
Host	Mouse
Gene ID	54106
Gene Symbol	TLR9
Species	Human, Mouse, Rat, Canine, Equine, Monkey, Primate
Reactivity Notes	Rhesus Monkey.
Immunogen	This antibody was developed against KLH-conjugated synthetic peptide corresponding to amino acids 268-300 of human TLR9 isoform A (Genbank accession no. AAF78037).
Notes	Sold under license from the Howard Hughes Medical Institute, Janelia Research Campus.

Product Application Details	
Applications	Western Blot, Dot Blot, ELISA, Flow Cytometry, Flow (Intracellular), Functional, Immunocytochemistry/ Immunofluorescence, Immunohistochemistry, Immunohistochemistry-Paraffin, In vitro assay, Immunoprecipitation, Block/Neutralize, CyTOF-ready, Knockdown Validated
Recommended Dilutions	Western Blot, Flow Cytometry, ELISA, Immunohistochemistry, Immunocytochemistry/ Immunofluorescence, Immunoprecipitation, Immunohistochemistry-Paraffin, Functional, In vitro assay, Dot Blot, Flow (Intracellular), CyTOF-ready, Knockdown Validated, Block/Neutralize
Application Notes	Optimal dilution of this antibody should be experimentally determined.



Images

THP-1 human acute monocytic leukemia cell line was stained with Mouse anti-TLR9 (26C593.2) Protein-G purified Monoclonal Antibody conjugated to Janelia Fluor® 549 (Catalog # NBP2-24729JF549, blue histogram) or matched control antibody (orange histogram).





Novus Biologicals USA

10730 E. Briarwood Avenue
Centennial, CO 80112
USA
Phone: 303.730.1950
Toll Free: 1.888.506.6887
Fax: 303.730.1966
nb-customerservice@bio-techne.com

Bio-Techne Canada

21 Canmotor Ave
Toronto, ON M8Z 4E6
Canada
Phone: 905.827.6400
Toll Free: 855.668.8722
Fax: 905.827.6402
canada.inquires@bio-techne.com

Bio-Techne Ltd

19 Barton Lane
Abingdon Science Park
Abingdon, OX14 3NB, United Kingdom
Phone: (44) (0) 1235 529449
Free Phone: 0800 37 34 15
Fax: (44) (0) 1235 533420
info.EMEA@bio-techne.com

General Contact Information

www.novusbio.com
Technical Support: nb-technical@bio-techne.com
Orders: nb-customerservice@bio-techne.com
General: novus@novusbio.com

Products Related to NBP2-24729JF549

NBP1-76680PEP	TLR9 Antibody Blocking Peptide
210-TA-005	TNF-alpha [Unconjugated]
7960-TR-050	TLR9
M6000B-1	IL-6 [HRP]

Limitations

This product is for research use only and is not approved for use in humans or in clinical diagnosis. Primary Antibodies are guaranteed for 1 year from date of receipt.

For more information on our 100% guarantee, please visit www.novusbio.com/guarantee

Earn gift cards/discounts by submitting a review: www.novusbio.com/reviews/submit/NBP2-24729JF549

Earn gift cards/discounts by submitting a publication using this product:
www.novusbio.com/publications

