

Product Datasheet

LYK5 Antibody NBP2-24700

Unit Size: 0.1 mg

Store at 4C short term. Aliquot and store at -20C long term. Avoid freeze-thaw cycles.

www.novusbio.com



technical@novusbio.com

Publications: 1

Protocols, Publications, Related Products, Reviews, Research Tools and Images at:
www.novusbio.com/NBP2-24700

Updated 9/9/2025 v.20.1

Earn rewards for product
reviews and publications.

Submit a publication at www.novusbio.com/publications

Submit a review at www.novusbio.com/reviews/destination/NBP2-24700



NBP2-24700

LYK5 Antibody

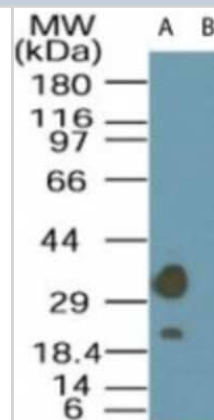
Product Information	
Unit Size	0.1 mg
Concentration	0.5 mg/ml
Storage	Store at 4C short term. Aliquot and store at -20C long term. Avoid freeze-thaw cycles.
Clonality	Polyclonal
Preservative	0.05% Sodium Azide
Isotype	IgG
Purity	Protein G purified
Buffer	PBS and 0.05% BSA

Product Description	
Description	Novus Biologicals Rabbit LYK5 Antibody (NBP2-24700) is a polyclonal antibody validated for use in WB. Anti-LYK5 Antibody: Cited in 1 publication. All Novus Biologicals antibodies are covered by our 100% guarantee.
Host	Rabbit
Gene ID	92335
Gene Symbol	STRADA
Species	Human, Mouse
Reactivity Notes	The amino acid sequence used is 100% homologous in Yellow Fluorescent Protein (YFP) and Cyan Fluorescent Protein (CFP). The NCBI accession number for GFP is AAC78774. Mouse reactivity reported in scientific literature (PMID: 24345663).
Immunogen	A portion of amino acids 300-350 of human STRAD (isoform 1) was used as the immunogen.

Product Application Details	
Applications	Western Blot
Recommended Dilutions	Western Blot 0.5-2 ug/ml

Images

Western Blot: LYK5 Antibody [NBP2-24700] - Analysis of LYK5 in A549 cell lysate in the (A) absence and (B) presence of immunizing peptide using NBP2-24700 at 1 ug/ml.



Publications

Yoneda M, Guo Y, Ono H et al. Decreased SIRT1 expression and LKB1 phosphorylation occur with long-term high-fat diet feeding, in addition to AMPK phosphorylation impairment in the early phase. *Obes Res Clin Pract.* 2010-07-01 [PMID: 24345663] (WB, Mouse)

Details:

STE20 related adaptor protein/STRAD (IMG-5799A). WB: Mouse liver (Figs 1, 2). STRAD levels decreased in animals fed high fat diets for 8 weeks (Fig 2).





Novus Biologicals USA

10730 E. Briarwood Avenue
Centennial, CO 80112
USA
Phone: 303.730.1950
Toll Free: 1.888.506.6887
Fax: 303.730.1966
nb-customerservice@bio-techne.com

Bio-Techne Canada

21 Canmotor Ave
Toronto, ON M8Z 4E6
Canada
Phone: 905.827.6400
Toll Free: 855.668.8722
Fax: 905.827.6402
canada.inquires@bio-techne.com

Bio-Techne Ltd

19 Barton Lane
Abingdon Science Park
Abingdon, OX14 3NB, United Kingdom
Phone: (44) (0) 1235 529449
Free Phone: 0800 37 34 15
Fax: (44) (0) 1235 533420
info.EMEA@bio-techne.com

General Contact Information

www.novusbio.com
Technical Support: nb-technical@bio-techne.com
Orders: nb-customerservice@bio-techne.com
General: novus@novusbio.com

Products Related to NBP2-24700

NBP2-33376H	Blue Marker Antibody (6F4-F6) [HRP]
HAF008	Goat anti-Rabbit IgG Secondary Antibody [HRP]
NB7160	Goat anti-Rabbit IgG (H+L) Secondary Antibody [HRP]
NBP2-24891	Rabbit IgG Isotype Control

Limitations

This product is for research use only and is not approved for use in humans or in clinical diagnosis. Primary Antibodies are guaranteed for 1 year from date of receipt.

For more information on our 100% guarantee, please visit www.novusbio.com/guarantee

Earn gift cards/discounts by submitting a review: www.novusbio.com/reviews/submit/NBP2-24700

Earn gift cards/discounts by submitting a publication using this product:
www.novusbio.com/publications

