

Product Datasheet

MafA Antibody NBP2-24636

Unit Size: 0.1 mg

Store at 4C short term. Aliquot and store at -20C long term. Avoid freeze-thaw cycles.

www.novusbio.com



technical@novusbio.com

Publications: 1

Protocols, Publications, Related Products, Reviews, Research Tools and Images at:
www.novusbio.com/NBP2-24636

Updated 9/9/2025 v.20.1

Earn rewards for product
reviews and publications.

Submit a publication at www.novusbio.com/publications

Submit a review at www.novusbio.com/reviews/destination/NBP2-24636



NBP2-24636

MafA Antibody

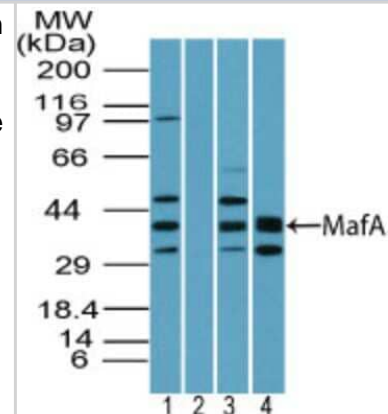
Product Information	
Unit Size	0.1 mg
Concentration	0.5 mg/ml
Storage	Store at 4C short term. Aliquot and store at -20C long term. Avoid freeze-thaw cycles.
Clonality	Polyclonal
Preservative	0.05% Sodium Azide
Isotype	IgG
Purity	Protein A purified
Buffer	PBS and 0.05% BSA

Product Description	
Description	Novus Biologicals Rabbit MafA Antibody (NBP2-24636) is a polyclonal antibody validated for use in IHC, WB, ICC/IF and ChIP. Anti-MafA Antibody: Cited in 1 publication. All Novus Biologicals antibodies are covered by our 100% guarantee.
Host	Rabbit
Gene ID	389692
Gene Symbol	MAFA
Species	Human, Mouse, Rat, Opossum
Immunogen	A portion of amino acids 300-350 of human MafA was used as the immunogen.

Product Application Details	
Applications	Western Blot, Immunohistochemistry-Paraffin, Chromatin Immunoprecipitation, Immunocytochemistry/ Immunofluorescence, Immunohistochemistry, Chromatin Immunoprecipitation (ChIP), ICC/IF (Negative)
Recommended Dilutions	Western Blot 0.25-0.5ug/ml, Chromatin Immunoprecipitation reported in scientific literature (PMID 24509877), Immunohistochemistry, Immunocytochemistry/ Immunofluorescence reported in scientific literature (PMID 24509877), Immunohistochemistry-Paraffin reported in scientific literature (PMID 24509877), ICC/IF (Negative), Chromatin Immunoprecipitation (ChIP)

Images

Western Blot: MafA Antibody [NBP2-24636] - Analysis of MafA in human liver lysate in the 1) absence and 2) presence of immunizing peptide, 3) mouse liver lysate and 4) rat liver lysate using this antibody. 25 ug/ml. Goat anti-rabbit Ig HRP secondary antibody and PicoTect ECL substrate solution were used for this test.



Publications

Brundage ME, Tandon P, Eaves DW et al. MAF mediates crosstalk between Ras-MAPK and mTOR signaling in NF1. *Oncogene*. 2014-02-10 [PMID: 24509877] (WB, IHC-P, ICC/IF, Chemotaxis, Human, Mouse)

Details:

Malignant peripheral nerve sheath (MPNST) mouse tumor cell lines, normal mouse Schwann cells, inducible MAF (iMAF)-transduced MPNST cells, & normal human Schwann cells from trauma victims, Xenograft mouse iMAF tumor models. WB: Figs 2b, 5f, 6d, 8a, IHC (P





Novus Biologicals USA

10730 E. Briarwood Avenue
Centennial, CO 80112
USA
Phone: 303.730.1950
Toll Free: 1.888.506.6887
Fax: 303.730.1966
nb-customerservice@bio-techne.com

Bio-Techne Canada

21 Canmotor Ave
Toronto, ON M8Z 4E6
Canada
Phone: 905.827.6400
Toll Free: 855.668.8722
Fax: 905.827.6402
canada.inquires@bio-techne.com

Bio-Techne Ltd

19 Barton Lane
Abingdon Science Park
Abingdon, OX14 3NB, United Kingdom
Phone: (44) (0) 1235 529449
Free Phone: 0800 37 34 15
Fax: (44) (0) 1235 533420
info.EMEA@bio-techne.com

General Contact Information

www.novusbio.com
Technical Support: nb-technical@bio-techne.com
Orders: nb-customerservice@bio-techne.com
General: novus@novusbio.com

Products Related to NBP2-24636

NBP2-33376H	Blue Marker Antibody (6F4-F6) [HRP]
HAF008	Goat anti-Rabbit IgG Secondary Antibody [HRP]
NB7160	Goat anti-Rabbit IgG (H+L) Secondary Antibody [HRP]
NBP2-24891	Rabbit IgG Isotype Control

Limitations

This product is for research use only and is not approved for use in humans or in clinical diagnosis. Primary Antibodies are guaranteed for 1 year from date of receipt.

For more information on our 100% guarantee, please visit www.novusbio.com/guarantee

Earn gift cards/discounts by submitting a review: www.novusbio.com/reviews/submit/NBP2-24636

Earn gift cards/discounts by submitting a publication using this product:
www.novusbio.com/publications

