

Product Datasheet

KLF15 Antibody - BSA Free

NBP2-24635

Unit Size: 0.1 mg

Store at 4C short term. Aliquot and store at -20C long term. Avoid freeze-thaw cycles.

www.novusbio.com



technical@novusbio.com

Publications: 9

Protocols, Publications, Related Products, Reviews, Research Tools and Images at:
www.novusbio.com/NBP2-24635

Updated 2/23/2025 v.20.1

Earn rewards for product
reviews and publications.

Submit a publication at www.novusbio.com/publications

Submit a review at www.novusbio.com/reviews/destination/NBP2-24635



NBP2-24635

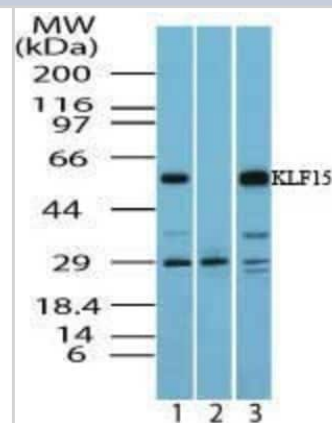
KLF15 Antibody - BSA Free

Product Information	
Unit Size	0.1 mg
Concentration	1.0 mg/ml
Storage	Store at 4C short term. Aliquot and store at -20C long term. Avoid freeze-thaw cycles.
Clonality	Polyclonal
Preservative	0.05% Sodium Azide
Isotype	IgG
Purity	Protein A purified
Buffer	PBS
Product Description	
Host	Rabbit
Gene ID	28999
Gene Symbol	KLF15
Species	Human, Mouse, Bovine
Reactivity Notes	Bovine reactivity reported in scientific literature (PMID: 29551501). Use in Mouse reported in scientific literature (PMID:32437957).
Immunogen	Synthetic peptide made to an internal portion of the human KLF15 protein (between amino acids 100-200) [UniProt Q9UIH9]
Product Application Details	
Applications	Western Blot, Immunocytochemistry/ Immunofluorescence, Immunohistochemistry, Immunohistochemistry-Paraffin
Recommended Dilutions	Western Blot 1.0-2.0 ug/ml, Immunohistochemistry 2-5 ug/ml, Immunocytochemistry/ Immunofluorescence 5 ug/ml, Immunohistochemistry-Paraffin 2-5 ug/ml

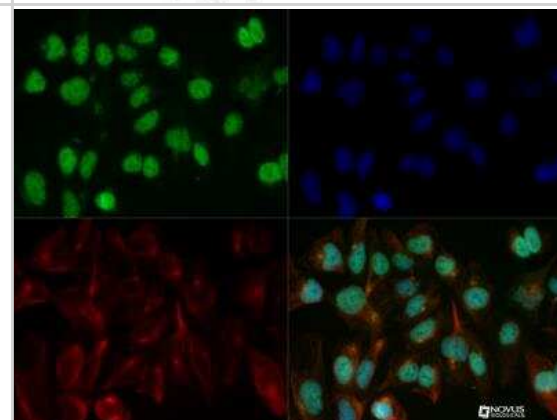


Images

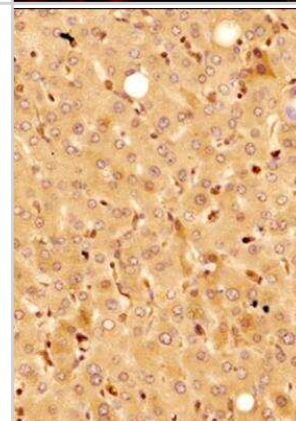
Western Blot: KLF15 Antibody [NBP2-24635] - Analysis of KLF15 in human liver lysate in the 1) absence and 2) presence of immunizing peptide and 3) mouse liver lysate using NBP2-24635 at 1.0 ug/ml. Goat anti-rabbit Ig HRP secondary antibody and PicoTest ECL substrate solution were used for this test.



Immunocytochemistry/Immunofluorescence: KLF15 Antibody [NBP2-24635] - KLF15 antibody was tested in HeLa cells with DyLight 488 (green). Nuclei and alpha-tubulin were counterstained with DAPI (blue) and DyLight 550 (red).



Immunohistochemistry-Paraffin: KLF15 Antibody [NBP2-24635] - Tissue section of human liver using KLF15 antibody at 1:100 dilution. The antibody generated strong cytoplasmic staining with some nuclear signal in the hepatocytes, while in Kupffer cells, the signal was mainly nuclear and was most intense among all cell types.



Publications

Hashimoto K, Kodama A, Ohira M et al. Postnatal expression of cell cycle promoter Fam64a causes heart dysfunction by inhibiting cardiomyocyte differentiation through repression of Klf15 iScience 2022-04-01 [PMID: 35602953] (WB, Mouse)

Rivera ME, Vaughan RA Comparing the effects of palmitate, insulin, and palmitate-insulin co-treatment on myotube metabolism and insulin resistance Lipids 2021-08-12 [PMID: 34382222]

Chen X, Raza SHA, Cheng G et al. Bta-miR-376a Targeting KLF15 Interferes with Adipogenesis Signaling Pathway to Promote Differentiation of Qinchuan Beef Cattle Preadipocytes Animals : an open access journal from MDPI 2020-12-10 [PMID: 33321855] (WB, Bovine)

Trivedi P ROLE OF TRANSCRIPTION FACTOR EB (TFEB) IN CARDIAC HEALTH AND DISEASE Thesis 2020-01-01 (WB, Rat)

Biswas D, Tozer K, Dao K et al. Adverse Outcomes in Obese Cardiac Surgery Patients Correlates With Altered Branched-Chain Amino Acid Catabolism in Adipose Tissue and Heart Front. Endocrinol. 2020-08-07 [PMID: 32903728] (Human)

Trivedi PC, Bartlett JJ, Mercer A et al. Loss of function of transcription factor EB remodels lipid metabolism and cell death pathways in the cardiomyocyte Biochim Biophys Acta Mol Basis Dis 2020-05-08 [PMID: 32437957] (WB, Mouse)

Rivera ME, Lyon ES, Vaughan RA Effect of metformin on myotube BCAA catabolism J. Cell. Biochem. 2019-08-05 [PMID: 31385363]

Guo H, Khan R, Raza SHA et al. KLF15 promotes transcription of KLF3 gene in bovine adipocytes. Gene. 2018-03-15 [PMID: 29551501] (Bovine)

Pandey D, Nomura Y, Rossberg MC, Hori D. Hypoxia Triggers SENP1 (Sentrin-Specific Protease 1) Modulation of KLF15 (Kruppel-Like Factor 15) and Transcriptional Regulation of Arg2 (Arginase 2) in Pulmonary Endothelium. Arterioscler. Thromb. Vasc. Biol. 2018-02-22 [PMID: 29472234] (WB, Human)





Novus Biologicals USA

10730 E. Briarwood Avenue
Centennial, CO 80112
USA
Phone: 303.730.1950
Toll Free: 1.888.506.6887
Fax: 303.730.1966
nb-customerservice@bio-techne.com

Bio-Techne Canada

21 Canmotor Ave
Toronto, ON M8Z 4E6
Canada
Phone: 905.827.6400
Toll Free: 855.668.8722
Fax: 905.827.6402
canada.inquires@bio-techne.com

Bio-Techne Ltd

19 Barton Lane
Abingdon Science Park
Abingdon, OX14 3NB, United Kingdom
Phone: (44) (0) 1235 529449
Free Phone: 0800 37 34 15
Fax: (44) (0) 1235 533420
info.EMEA@bio-techne.com

General Contact Information

www.novusbio.com
Technical Support: nb-technical@bio-techne.com
Orders: nb-customerservice@bio-techne.com
General: novus@novusbio.com

Products Related to NBP2-24635

HAF008	Goat anti-Rabbit IgG Secondary Antibody [HRP]
NB7160	Goat anti-Rabbit IgG (H+L) Secondary Antibody [HRP]
NBP2-24891	Rabbit IgG Isotype Control
NBP2-24635PEP	KLF15 Antibody Blocking Peptide

Limitations

This product is for research use only and is not approved for use in humans or in clinical diagnosis. Primary Antibodies are guaranteed for 1 year from date of receipt.

For more information on our 100% guarantee, please visit www.novusbio.com/guarantee

Earn gift cards/discounts by submitting a review: www.novusbio.com/reviews/submit/NBP2-24635

Earn gift cards/discounts by submitting a publication using this product:
www.novusbio.com/publications

