

Product Datasheet

Paxillin [p Tyr118] Antibody

NBP2-24459

Unit Size: 0.02 mg

Store at -20C. Avoid freeze-thaw cycles.

www.novusbio.com



technical@novusbio.com

Publications: 3

Protocols, Publications, Related Products, Reviews, Research Tools and Images at:
www.novusbio.com/NBP2-24459

Updated 10/23/2024 v.20.1

Earn rewards for product
reviews and publications.

Submit a publication at www.novusbio.com/publications

Submit a review at www.novusbio.com/reviews/destination/NBP2-24459



NBP2-24459

Paxillin [p Tyr118] Antibody

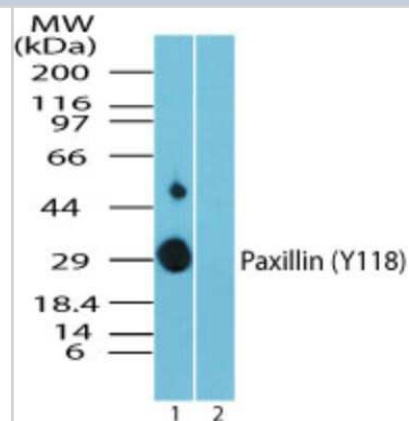
Product Information	
Unit Size	0.02 mg
Concentration	0.2 mg/ml
Storage	Store at -20C. Avoid freeze-thaw cycles.
Clonality	Polyclonal
Preservative	0.05% Sodium Azide
Isotype	IgG
Purity	Immunogen affinity purified
Buffer	0.1 ml PBS and 0.05% BSA

Product Description	
Host	Rabbit
Gene ID	5829
Gene Symbol	PXN
Species	Human, Mouse, Rat, Canine, Chicken, Primate, Rabbit, Rhesus Macaque, Xenopus, Zebrafish
Reactivity Notes	Opossum, Chimpanzee, Orangutan, Salmon (100%), Tetradon (85%).
Marker	Focal Adhesion Marker
Immunogen	A portion of human Paxillin protein containing a phosphorylated tyrosine residue at position 118 was used as the immunogen for this phospho antibody.

Product Application Details	
Applications	Western Blot, Immunocytochemistry/ Immunofluorescence
Recommended Dilutions	Western Blot 0.025-0.1 ug/ml, Immunocytochemistry/ Immunofluorescence reported in scientific literature (PMID 30635353)

Images

Western Blot: Paxillin [p Tyr118] Antibody [NBP2-24459] - Analysis of phospho Paxillin (Y118) in recombinant fusion protein containing 1) a phosphorylated tyrosine at position 118 and 2) an unphosphorylated tyrosine at position 118, using paxillin phospho antibody at 0.025 ug/ml. Goat anti-rabbit Ig HRP secondary antibody and PicoTect ECL substrate solution were used for this test.



Publications

Xue Q, Varady SRS, Waddell TQA et al. Lack of Paxillin phosphorylation promotes single-cell migration in vivo *The Journal of cell biology* 2023-03-06 [PMID: 36723624] (IHC, Zebrafish)

Olson HM, Nechiporuk AV Lamellipodia-like protrusions and focal adhesions contribute to collective cell migration in zebrafish *Dev Biol* 2020-10-21 [PMID: 33096063]

Gunawan F, Gentile A, Fukuda R et al. Focal adhesions are essential to drive zebrafish heart valve morphogenesis. *J. Cell Biol.* 2019-01-11 [PMID: 30635353] (ICC/IF, Zebrafish)





Novus Biologicals USA

10730 E. Briarwood Avenue
Centennial, CO 80112
USA
Phone: 303.730.1950
Toll Free: 1.888.506.6887
Fax: 303.730.1966
nb-customerservice@bio-techne.com

Bio-Techne Canada

21 Canmotor Ave
Toronto, ON M8Z 4E6
Canada
Phone: 905.827.6400
Toll Free: 855.668.8722
Fax: 905.827.6402
canada.inquires@bio-techne.com

Bio-Techne Ltd

19 Barton Lane
Abingdon Science Park
Abingdon, OX14 3NB, United Kingdom
Phone: (44) (0) 1235 529449
Free Phone: 0800 37 34 15
Fax: (44) (0) 1235 533420
info.EMEA@bio-techne.com

General Contact Information

www.novusbio.com
Technical Support: nb-technical@bio-techne.com
Orders: nb-customerservice@bio-techne.com
General: novus@novusbio.com

Products Related to NBP2-24459

HAF008	Goat anti-Rabbit IgG Secondary Antibody [HRP]
NB7160	Goat anti-Rabbit IgG (H+L) Secondary Antibody [HRP]
NBP2-24891	Rabbit IgG Isotype Control
H00005829-P01-10ug	Recombinant Human Paxillin GST (N-Term) Protein

Limitations

This product is for research use only and is not approved for use in humans or in clinical diagnosis. Primary Antibodies are guaranteed for 1 year from date of receipt.

For more information on our 100% guarantee, please visit www.novusbio.com/guarantee

Earn gift cards/discounts by submitting a review: www.novusbio.com/reviews/submit/NBP2-24459

Earn gift cards/discounts by submitting a publication using this product:
www.novusbio.com/publications

