

# Product Datasheet

## ROR gamma/RORC/NR1F3 Antibody (4G419) [PE] NBP2-24452

Unit Size: 0.1 ml

Store at 4C in the dark.

[www.novusbio.com](http://www.novusbio.com)



[technical@novusbio.com](mailto:technical@novusbio.com)

### Publications: 1

Protocols, Publications, Related Products, Reviews, Research Tools and Images at:  
[www.novusbio.com/NBP2-24452](http://www.novusbio.com/NBP2-24452)

Updated 10/23/2024 v.20.1

Earn rewards for product  
reviews and publications.

Submit a publication at [www.novusbio.com/publications](http://www.novusbio.com/publications)

Submit a review at [www.novusbio.com/reviews/destination/NBP2-24452](http://www.novusbio.com/reviews/destination/NBP2-24452)



**NBP2-24452**

ROR gamma/RORC/NR1F3 Antibody (4G419) [PE]

**Product Information**

<b>Unit Size</b>	0.1 ml
<b>Concentration</b>	Please see the vial label for concentration. If unlisted please contact technical services.
<b>Storage</b>	Store at 4C in the dark.
<b>Clonality</b>	Monoclonal
<b>Clone</b>	4G419
<b>Preservative</b>	0.05% Sodium Azide
<b>Isotype</b>	IgG1 Kappa
<b>Conjugate</b>	PE
<b>Purity</b>	Protein A or G purified
<b>Buffer</b>	PBS

**Product Description**

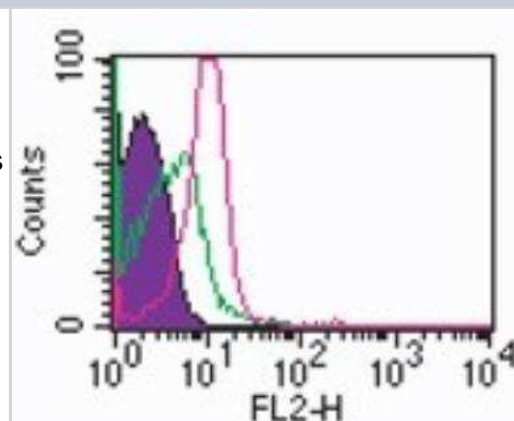
<b>Host</b>	Mouse
<b>Gene ID</b>	6097
<b>Gene Symbol</b>	RORC
<b>Species</b>	Human, Mouse, Rat
<b>Reactivity Notes</b>	Rat reactivity reported in scientific literature (PMID: 22110656).
<b>Immunogen</b>	A portion of amino acids 1-50 of human ROR gamma was used as the immunogen.

**Product Application Details**

<b>Applications</b>	Flow Cytometry
<b>Recommended Dilutions</b>	Flow Cytometry 1ul/1 million cells
<b>Application Notes</b>	Optimal dilution of this antibody should be experimentally determined.

**Images**

Flow Cytometry: ROR gamma/RORC/NR1F3 Antibody (4G419) [PE] [NBP2-24452] - Intracellular analysis of RORgamma in human lymphocytes using 10 ul (0.25 ug) of ROR gamma antibody. Shaded histogram represents cells without antibody; green represents isotype control antibody this antibody ; red represents RORgamma antibody. this antibody was used for this test.

**Publications**

Almolda B, Costa M, Montoya M, Gonzalez B, Castellano B Increase in Th17 and T-reg lymphocytes and decrease of IL22 correlate with the recovery phase of acute EAE in rat. PLoS One. 2011-01-01 [PMID: 22110656] (Rat)

**Novus Biologicals USA**

10730 E. Briarwood Avenue  
Centennial, CO 80112  
USA  
Phone: 303.730.1950  
Toll Free: 1.888.506.6887  
Fax: 303.730.1966  
nb-customerservice@bio-techne.com

**Bio-Techne Canada**

21 Canmotor Ave  
Toronto, ON M8Z 4E6  
Canada  
Phone: 905.827.6400  
Toll Free: 855.668.8722  
Fax: 905.827.6402  
canada.inquires@bio-techne.com

**Bio-Techne Ltd**

19 Barton Lane  
Abingdon Science Park  
Abingdon, OX14 3NB, United Kingdom  
Phone: (44) (0) 1235 529449  
Free Phone: 0800 37 34 15  
Fax: (44) (0) 1235 533420  
info.EMEA@bio-techne.com

**General Contact Information**

[www.novusbio.com](http://www.novusbio.com)  
Technical Support: nb-technical@bio-techne.com  
Orders: nb-customerservice@bio-techne.com  
General: novus@novusbio.com

**Products Related to NBP2-24452**

---

NBP1-43319PE-0.5ml	Mouse IgG1 Kappa Isotype Control (P3.6.2.8.1) [PE]
NBP2-24447	ROR gamma/RORC/NR1F3 Antibody (4G419) [FITC]
H00006097-Q01-10ug	Recombinant Human ROR gamma/RORC/NR1F3 GST (N-Term) Protein
M6000B-1	IL-6 [HRP]

---

**Limitations**

This product is for research use only and is not approved for use in humans or in clinical diagnosis. Primary Antibodies are guaranteed for 1 year from date of receipt.

For more information on our 100% guarantee, please visit [www.novusbio.com/guarantee](http://www.novusbio.com/guarantee)

Earn gift cards/discounts by submitting a review: [www.novusbio.com/reviews/submit/NBP2-24452](http://www.novusbio.com/reviews/submit/NBP2-24452)

Earn gift cards/discounts by submitting a publication using this product:  
[www.novusbio.com/publications](http://www.novusbio.com/publications)

