

Product Datasheet

SOX2 Antibody NBP2-24390

Unit Size: 0.1 mg

Store at -20C. Avoid freeze-thaw cycles.

www.novusbio.com



technical@novusbio.com

Publications: 2

Protocols, Publications, Related Products, Reviews, Research Tools and Images at:
www.novusbio.com/NBP2-24390

Updated 10/23/2024 v.20.1

Earn rewards for product
reviews and publications.

Submit a publication at www.novusbio.com/publications

Submit a review at www.novusbio.com/reviews/destination/NBP2-24390



NBP2-24390

SOX2 Antibody

Product Information	
Unit Size	0.1 mg
Concentration	0.5 mg/ml
Storage	Store at -20C. Avoid freeze-thaw cycles.
Clonality	Polyclonal
Preservative	0.05% Sodium Azide
Isotype	IgG
Purity	Immunogen affinity purified
Buffer	0.2 ml PBS and 0.05% BSA

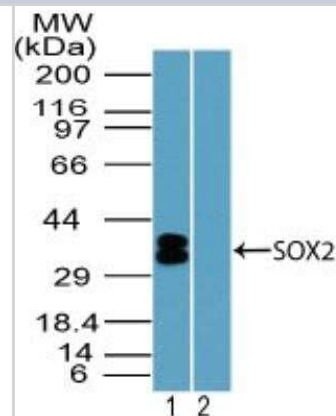
Product Description	
Host	Rabbit
Gene ID	6657
Gene Symbol	SOX2
Species	Human, Mouse, Porcine, Chicken, Feline, Primate
Reactivity Notes	Xenopus (88%) Chimpanzee (81%)
Marker	Embryonic Stem Cell Marker
Immunogen	A portion of amino acids 100-150 of human SOX2 was used as the immunogen for the antibody.

Product Application Details	
Applications	Western Blot, Immunocytochemistry/ Immunofluorescence, Immunohistochemistry, Immunohistochemistry-Paraffin
Recommended Dilutions	Western Blot 1-3 ug/ml, Immunohistochemistry, Immunocytochemistry/ Immunofluorescence, Immunohistochemistry-Paraffin 20 ug/ml

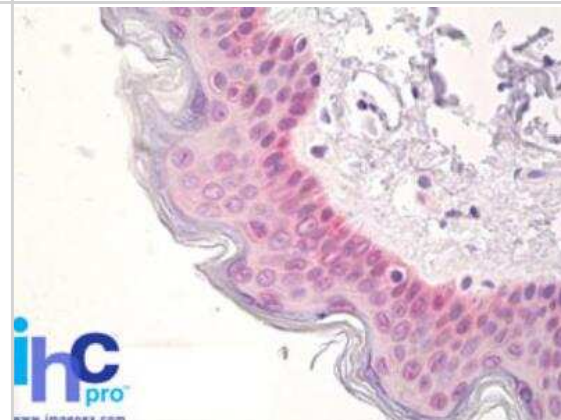


Images

Western Blot: SOX2 Antibody [NBP2-24390] - Analysis of SOX2 in mouse embryo brain lysate in the 1) absence and 2) presence of immunizing peptide using this antibody. Goat anti-rabbit Ig HRP secondary antibody and PicoTect ECL substrate solution were used for this test.



Immunohistochemistry-Paraffin: SOX2 Antibody [NBP2-24390] - FFPE human skin stained with SOX2 antibody at 20 ug/ml.



Publications

Liu SM, Ifebi B, Johnson Iii F et al. The gut signals to AGRP expressing cells of the pituitary to control glucose homeostasis *The Journal of clinical investigation* 2023-02-14 [PMID: 36787185] (Immunohistochemistry, Mouse)

Kaseb HO, Fohrer-Ting H, Lewis DW et al. Identification, expansion and characterization of cancer cells with stem cell properties from head and neck squamous cell carcinomas *Exp. Cell Res.* 2016-09-09 [PMID: 27619333] (ICC/IF, Human)



Novus Biologicals USA

10730 E. Briarwood Avenue
Centennial, CO 80112
USA
Phone: 303.730.1950
Toll Free: 1.888.506.6887
Fax: 303.730.1966
nb-customerservice@bio-techne.com

Bio-Techne Canada

21 Canmotor Ave
Toronto, ON M8Z 4E6
Canada
Phone: 905.827.6400
Toll Free: 855.668.8722
Fax: 905.827.6402
canada.inquires@bio-techne.com

Bio-Techne Ltd

19 Barton Lane
Abingdon Science Park
Abingdon, OX14 3NB, United Kingdom
Phone: (44) (0) 1235 529449
Free Phone: 0800 37 34 15
Fax: (44) (0) 1235 533420
info.EMEA@bio-techne.com

General Contact Information

www.novusbio.com
Technical Support: nb-technical@bio-techne.com
Orders: nb-customerservice@bio-techne.com
General: novus@novusbio.com

Products Related to NBP2-24390

HAF008	Goat anti-Rabbit IgG Secondary Antibody [HRP]
NB7160	Goat anti-Rabbit IgG (H+L) Secondary Antibody [HRP]
NBP2-24891	Rabbit IgG Isotype Control
NBP2-35268-5ug	Recombinant Human SOX2 TAT Protein

Limitations

This product is for research use only and is not approved for use in humans or in clinical diagnosis. Primary Antibodies are guaranteed for 1 year from date of receipt.

For more information on our 100% guarantee, please visit www.novusbio.com/guarantee

Earn gift cards/discounts by submitting a review: www.novusbio.com/reviews/submit/NBP2-24390

Earn gift cards/discounts by submitting a publication using this product:
www.novusbio.com/publications

