

Product Datasheet

Recombinant Human RPL22 His Protein NBP2-23419

Unit Size: 0.05 mg

Store at 4C short term. Aliquot and store at -20C long term. Avoid freeze-thaw cycles.

www.novusbio.com



technical@novusbio.com

Publications: 1

Protocols, Publications, Related Products, Reviews, Research Tools and Images at:
www.novusbio.com/NBP2-23419

Updated 10/23/2024 v.20.1

Earn rewards for product
reviews and publications.

Submit a publication at www.novusbio.com/publications

Submit a review at www.novusbio.com/reviews/destination/NBP2-23419



NBP2-23419

Recombinant Human RPL22 His Protein

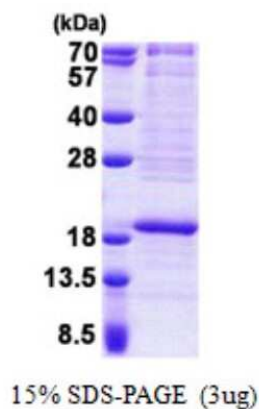
| Product Information | |
|-------------------------|--|
| Unit Size | 0.05 mg |
| Concentration | 0.25 mg/ml |
| Storage | Store at 4C short term. Aliquot and store at -20C long term. Avoid freeze-thaw cycles. |
| Preservative | No Preservative |
| Purity | >85%, by SDS-PAGE |
| Buffer | 20 mM Tris-HCl buffer (pH 8.0), 0.15 M NaCl, 20% glycerol, 1 mM DTT |
| Target Molecular Weight | 17 kDa |

| Product Description | |
|---------------------|--|
| Description | <p>A recombinant protein with a N-Terminal His-tag and corresponding to the amino acids 1-128 of Human RPL22</p> <p>Source: <i>E.coli</i></p> <p>Amino Acid Sequence: MGSSHHHHHH SGLVPRGSH MGSMAPVKKL VVKGGKKKKQ VLKFTLDCTH PVEDGIMDAA NFEQFLQERI KVNGKAGNLG GGVVTIERSK SKITVTSEVP FSKRYLYLT KKYLKKNLRL DWLRVVANSK ESYELRYFQI NQDEEEEEDE D</p> |
| Gene ID | 6146 |
| Gene Symbol | RPL22 |
| Species | Human |

| Product Application Details | |
|-----------------------------|----------|
| Applications | SDS-Page |
| Recommended Dilutions | SDS-Page |

Images

SDS-Page: Recombinant Human RPL22 Protein [NBP2-23419]



Publications

Neylen Del Toro, Ana Fernandez-Ruiz, Lian Mignacca, Paloma Kalegari, Marie-Camille Rowell, Sebastian Igelmann, Emmanuelle Saint-Germain, Mehdi Benfdil, Stéphane Lopes-Paciencia, Léa Brakier-Gingras, Véronique Bourdeau, Gerardo Ferbeyre, Frédéric Lessard Ribosomal protein RPL22/eL22 regulates the cell cycle by acting as an inhibitor of the CDK4-cyclin D complex. *Cell cycle (Georgetown, Tex.)* 2020-04-13 [PMID: 30874462]





Novus Biologicals USA

10730 E. Briarwood Avenue
Centennial, CO 80112
USA
Phone: 303.730.1950
Toll Free: 1.888.506.6887
Fax: 303.730.1966
nb-customerservice@bio-techne.com

Bio-Techne Canada

21 Canmotor Ave
Toronto, ON M8Z 4E6
Canada
Phone: 905.827.6400
Toll Free: 855.668.8722
Fax: 905.827.6402
canada.inquires@bio-techne.com

Bio-Techne Ltd

19 Barton Lane
Abingdon Science Park
Abingdon, OX14 3NB, United Kingdom
Phone: (44) (0) 1235 529449
Free Phone: 0800 37 34 15
Fax: (44) (0) 1235 533420
info.EMEA@bio-techne.com

General Contact Information

www.novusbio.com
Technical Support: nb-technical@bio-techne.com
Orders: nb-customerservice@bio-techne.com
General: novus@novusbio.com

Products Related to NBP2-23419

| | |
|----------------|---------------------------------|
| NBP1-98446PEP | RPL22 Antibody Blocking Peptide |
| H00029956-M01A | LASS2 Antibody (1A6) |
| NBP1-06069 | RPL22 Antibody |
| NBP1-89105 | RUNX1/CBFA2 Antibody |

Limitations

This product is for research use only and is not approved for use in humans or in clinical diagnosis. Peptides and proteins are guaranteed for 3 months from date of receipt.

For more information on our 100% guarantee, please visit www.novusbio.com/guarantee

Earn gift cards/discounts by submitting a review: www.novusbio.com/reviews/submit/NBP2-23419

Earn gift cards/discounts by submitting a publication using this product:
www.novusbio.com/publications

