

# Product Datasheet

## Recombinant Human MAP1 His Protein NBP2-23249

Unit Size: 0.1 mg

Store at 4C short term. Aliquot and store at -20C long term. Avoid freeze-thaw cycles.

[www.novusbio.com](http://www.novusbio.com)



[technical@novusbio.com](mailto:technical@novusbio.com)

Protocols, Publications, Related Products, Reviews, Research Tools and Images at:  
[www.novusbio.com/NBP2-23249](http://www.novusbio.com/NBP2-23249)

Updated 10/23/2024 v.20.1

Earn rewards for product  
reviews and publications.

Submit a publication at [www.novusbio.com/publications](http://www.novusbio.com/publications)

Submit a review at [www.novusbio.com/reviews/destination/NBP2-23249](http://www.novusbio.com/reviews/destination/NBP2-23249)



**NBP2-23249**

## Recombinant Human MAP1 His Protein

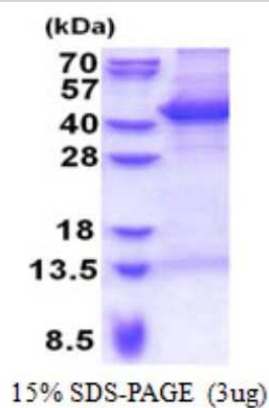
Product Information	
Unit Size	0.1 mg
Concentration	0.5 mg/ml
Storage	Store at 4C short term. Aliquot and store at -20C long term. Avoid freeze-thaw cycles.
Preservative	No Preservative
Purity	>85%, by SDS-PAGE
Buffer	20 mM Tris-HCl buffer (pH8.0), 10% glycerol, 0.4M UREA
Target Molecular Weight	41.9 kDa

Product Description	
Description	<p>A denatured recombinant protein with a N-Terminal His-tag and corresponding to the amino acids 1-351 of Human MAP1</p> <p><b>Source:</b> <i>E.coli</i></p> <p><b>Amino Acid Sequence:</b> MGSSHHHHHH SGLVPRGSH MGSMTLRLLLE DWCRGMDMNP RKALLIAGIS QSCSVAEIEE ALQAGLAPLG EYRLLGRMFR RDENRKVALV GLTAETSHAL VPKEIPGKGG IWRVIFKPPD PDNTFLSRLN EFLAGEGMTV GELSRALGHE NGSLDPEQGM IPEMWAPMLA QALEALQPAL QCLKYKRLRV FSGRESPEPG EEEFGRWMFH TTQMIKAWQV PDVEKRRRLLESLRGPALDV IRVLKINNPL ITVDECLQAL EEVFGVTDNP RELQVKYLTT YQKDEEKLSA YVLRLEPLLQ KLVQRGAIER DAVNQARLDQ VIAGAVHHTI RRELNLPEDG PAPGFLQLLV LIKDYEAAEE EEALLQAILE GNFT</p>
Gene ID	64112
Gene Symbol	MOAP1
Species	Human

Product Application Details	
Applications	SDS-Page
Recommended Dilutions	SDS-Page
Application Notes	Denatured protein is most likely not the best option for functional studies. It is better suited for Western Blot (WB) or imaging assays.

**Images**

SDS-Page: MAP1 Protein [NBP2-23249]





### **Novus Biologicals USA**

10730 E. Briarwood Avenue  
Centennial, CO 80112  
USA  
Phone: 303.730.1950  
Toll Free: 1.888.506.6887  
Fax: 303.730.1966  
nb-customerservice@bio-techne.com

### **Bio-Techne Canada**

21 Canmotor Ave  
Toronto, ON M8Z 4E6  
Canada  
Phone: 905.827.6400  
Toll Free: 855.668.8722  
Fax: 905.827.6402  
canada.inquires@bio-techne.com

### **Bio-Techne Ltd**

19 Barton Lane  
Abingdon Science Park  
Abingdon, OX14 3NB, United Kingdom  
Phone: (44) (0) 1235 529449  
Free Phone: 0800 37 34 15  
Fax: (44) (0) 1235 533420  
info.EMEA@bio-techne.com

### **General Contact Information**

www.novusbio.com  
Technical Support: nb-technical@bio-techne.com  
Orders: nb-customerservice@bio-techne.com  
General: novus@novusbio.com

### **Products Related to NBP2-23249**

---

NBP3-21408PEP	MAP1 Recombinant Protein Antigen
236-EG-200	EGF [Unconjugated]
H00064112-M02	MAP1 Antibody (4A1)
NB100-2331	LC3A Antibody - BSA Free

---

### **Limitations**

This product is for research use only and is not approved for use in humans or in clinical diagnosis. Peptides and proteins are guaranteed for 3 months from date of receipt.

For more information on our 100% guarantee, please visit [www.novusbio.com/guarantee](http://www.novusbio.com/guarantee)

Earn gift cards/discounts by submitting a review: [www.novusbio.com/reviews/submit/NBP2-23249](http://www.novusbio.com/reviews/submit/NBP2-23249)

Earn gift cards/discounts by submitting a publication using this product:  
[www.novusbio.com/publications](http://www.novusbio.com/publications)

