

Product Datasheet

Recombinant Human SPFH2 His Protein NBP2-23027

Unit Size: 0.1 mg

Store at 4C short term. Aliquot and store at -20C long term. Avoid freeze-thaw cycles.

www.novusbio.com



technical@novusbio.com

Protocols, Publications, Related Products, Reviews, Research Tools and Images at:
www.novusbio.com/NBP2-23027

Updated 10/23/2024 v.20.1

Earn rewards for product
reviews and publications.

Submit a publication at www.novusbio.com/publications

Submit a review at www.novusbio.com/reviews/destination/NBP2-23027



NBP2-23027

Recombinant Human SPFH2 His Protein

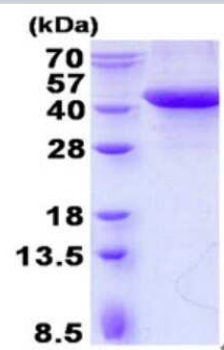
Product Information	
Unit Size	0.1 mg
Concentration	1 mg/ml
Storage	Store at 4C short term. Aliquot and store at -20C long term. Avoid freeze-thaw cycles.
Preservative	No Preservative
Purity	>95%, by SDS-PAGE
Buffer	20 mM Tris-HCl buffer (pH 8.0), 2M UREA, 20% glycerol
Target Molecular Weight	37.8 kDa

Product Description	
Description	<p>A denatured recombinant protein with a N-Terminal His-tag and corresponding to the amino acids 25-339 of Human SPFH2</p> <p>Source: <i>E.coli</i></p> <p>Amino Acid Sequence: MGSSHHHHHH SGLVPRGSH MGSKIEEGHI GVYYRGGALL TSTSGPGFHL MLPFITSYKS VQTTLQTDEV KNVPCGTSGG VMIYFDRIEV VNFLVPNAVY DIVKNYTADY DKALIFNKIH HELNQFCSVH TLQEVYIELF DQIDENLKLA LQQDLTSMAP GLVIQAVRVT KPNIPAIRR NYELMESEKT KLLIAAQKQK VVEKEAETER KKALIEAEKV AQVAEITYGQ KVMEKETEEK ISEIEDAAFL AREKAKADAE CYTAMKIAEA NKLKLTPEYL QLMKYKAIAS NSKIYFGKDI PNMFMDSAGS VSKQFEGGLAD KLSFGLEDEP LETATKEN</p>
Gene ID	11160
Gene Symbol	ERLIN2
Species	Human

Product Application Details	
Applications	SDS-Page
Recommended Dilutions	SDS-Page
Application Notes	Denatured protein is most likely not the best option for functional studies. It is better suited for Western Blot (WB) or imaging assays.

Images

SDS-Page: SPFH2 Protein [NBP2-23027]



15% SDS-PAGE (3ug)



Novus Biologicals USA

10730 E. Briarwood Avenue
Centennial, CO 80112
USA
Phone: 303.730.1950
Toll Free: 1.888.506.6887
Fax: 303.730.1966
nb-customerservice@bio-techne.com

Bio-Techne Canada

21 Canmotor Ave
Toronto, ON M8Z 4E6
Canada
Phone: 905.827.6400
Toll Free: 855.668.8722
Fax: 905.827.6402
canada.inquires@bio-techne.com

Bio-Techne Ltd

19 Barton Lane
Abingdon Science Park
Abingdon, OX14 3NB, United Kingdom
Phone: (44) (0) 1235 529449
Free Phone: 0800 37 34 15
Fax: (44) (0) 1235 533420
info.EMEA@bio-techne.com

General Contact Information

www.novusbio.com
Technical Support: nb-technical@bio-techne.com
Orders: nb-customerservice@bio-techne.com
General: novus@novusbio.com

Products Related to NBP2-23027

NBP1-88247PEP	SPFH2 Recombinant Protein Antigen
NB100-615	Caveolin-1 Antibody (7C8)
NBP1-88247	SPFH2 Antibody
AF956	Gremlin 1 Antibody [Unconjugated]

Limitations

This product is for research use only and is not approved for use in humans or in clinical diagnosis. Peptides and proteins are guaranteed for 3 months from date of receipt.

For more information on our 100% guarantee, please visit www.novusbio.com/guarantee

Earn gift cards/discounts by submitting a review: www.novusbio.com/reviews/submit/NBP2-23027

Earn gift cards/discounts by submitting a publication using this product:
www.novusbio.com/publications

