

# Product Datasheet

## Recombinant Human BCL2L10 His Protein NBP2-22709

Unit Size: 0.1 mg

Store at 4C short term. Aliquot and store at -20C long term. Avoid freeze-thaw cycles.

[www.novusbio.com](http://www.novusbio.com)



[technical@novusbio.com](mailto:technical@novusbio.com)

Protocols, Publications, Related Products, Reviews, Research Tools and Images at:  
[www.novusbio.com/NBP2-22709](http://www.novusbio.com/NBP2-22709)

Updated 10/23/2024 v.20.1

Earn rewards for product  
reviews and publications.

Submit a publication at [www.novusbio.com/publications](http://www.novusbio.com/publications)

Submit a review at [www.novusbio.com/reviews/destination/NBP2-22709](http://www.novusbio.com/reviews/destination/NBP2-22709)



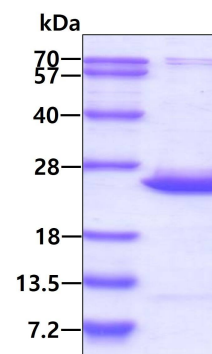
**NBP2-22709**

## Recombinant Human BCL2L10 His Protein

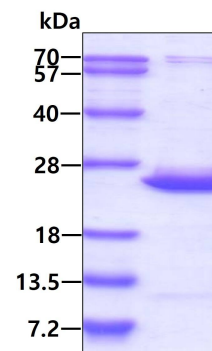
Product Information	
Unit Size	0.1 mg
Concentration	0.5 mg/ml
Storage	Store at 4C short term. Aliquot and store at -20C long term. Avoid freeze-thaw cycles.
Preservative	No Preservative
Purity	>90%, by SDS-PAGE
Buffer	20 mM Tris-HCl buffer (pH 8.0), 0.15 M NaCl, 20% glycerol, 1 mM DTT
Target Molecular Weight	21.8 kDa
Product Description	
Description	<p>A recombinant protein with a N-Terminal His-tag and corresponding to the amino acids 1-172 of Human BCL2L10</p> <p><b>Source:</b> <i>E.coli</i></p> <p><b>Amino Acid Sequence:</b> MGSSHHHHHH SGLVPRGSH MGSMVDQLRE RTTMADPLRE RTELLLADYL GYCAREPGTP EPAPSTPEAA VLRSAAARLR QIHRFFSAY LGYPGNRFEL VALMADSVLS DSPGPTWGRV VTLVTFAGTL LERGPLVTAR WKKWGFQPR L KEQEGDVARD CQRLVALLSS RLMGQHRAWL QAQGGWDGFC HFFRT</p>
Gene ID	10017
Gene Symbol	BCL2L10
Species	Human
Product Application Details	
Applications	SDS-Page
Recommended Dilutions	SDS-Page

**Images**

SDS-PAGE: Recombinant Human BCL2L10 His Protein [NBP2-22709] - 3ug by SDS-PAGE under reducing condition and visualized by coomassie blue stain.



SDS-PAGE: Recombinant Human BCL2L10 His Protein [NBP2-22709] - 3ug by SDS-PAGE under reducing condition and visualized by coomassie blue stain.





### **Novus Biologicals USA**

10730 E. Briarwood Avenue  
Centennial, CO 80112  
USA  
Phone: 303.730.1950  
Toll Free: 1.888.506.6887  
Fax: 303.730.1966  
nb-customerservice@bio-techne.com

### **Bio-Techne Canada**

21 Canmotor Ave  
Toronto, ON M8Z 4E6  
Canada  
Phone: 905.827.6400  
Toll Free: 855.668.8722  
Fax: 905.827.6402  
canada.inquires@bio-techne.com

### **Bio-Techne Ltd**

19 Barton Lane  
Abingdon Science Park  
Abingdon, OX14 3NB, United Kingdom  
Phone: (44) (0) 1235 529449  
Free Phone: 0800 37 34 15  
Fax: (44) (0) 1235 533420  
info.EMEA@bio-techne.com

### **General Contact Information**

www.novusbio.com  
Technical Support: nb-technical@bio-techne.com  
Orders: nb-customerservice@bio-techne.com  
General: novus@novusbio.com

### **Products Related to NBP2-22709**

---

NBP1-77224PEP	BCL2L10 Antibody Blocking Peptide
AF860	BID Antibody [Unconjugated]
NBP2-61703	BCL2L10 Antibody (8A2F9) - BSA Free
NB100-56118	Caspase-9 Antibody

---

### **Limitations**

This product is for research use only and is not approved for use in humans or in clinical diagnosis. Peptides and proteins are guaranteed for 3 months from date of receipt.

For more information on our 100% guarantee, please visit [www.novusbio.com/guarantee](http://www.novusbio.com/guarantee)

Earn gift cards/discounts by submitting a review: [www.novusbio.com/reviews/submit/NBP2-22709](http://www.novusbio.com/reviews/submit/NBP2-22709)

Earn gift cards/discounts by submitting a publication using this product:  
[www.novusbio.com/publications](http://www.novusbio.com/publications)

