

# Product Datasheet

## RhoA Antibody (1A11-4G10)

### NBP2-22528

Unit Size: 100ug

Store at -20C. Avoid freeze-thaw cycles.

[www.novusbio.com](http://www.novusbio.com)



[technical@novusbio.com](mailto:technical@novusbio.com)

#### Publications: 2

Protocols, Publications, Related Products, Reviews, Research Tools and Images at:  
[www.novusbio.com/NBP2-22528](http://www.novusbio.com/NBP2-22528)

Updated 10/23/2024 v.20.1

Earn rewards for product  
reviews and publications.

Submit a publication at [www.novusbio.com/publications](http://www.novusbio.com/publications)

Submit a review at [www.novusbio.com/reviews/destination/NBP2-22528](http://www.novusbio.com/reviews/destination/NBP2-22528)



**NBP2-22528**

RhoA Antibody (1A11-4G10)

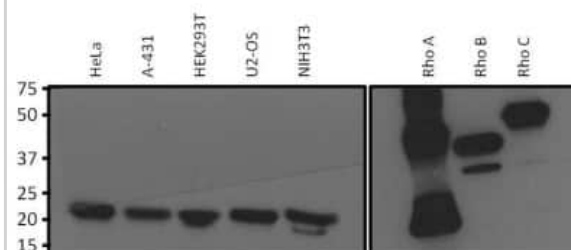
Product Information	
Unit Size	100ug
Concentration	1 mg/ml
Storage	Store at -20C. Avoid freeze-thaw cycles.
Clonality	Monoclonal
Clone	1A11-4G10
Preservative	0.05% Sodium Azide
Isotype	IgG1
Purity	Protein A purified
Buffer	PBS with 1 mg/ml BSA and 30% glycerol

Product Description	
Host	Mouse
Gene ID	387
Gene Symbol	RHOA
Species	Human, Mouse, Rat
Reactivity Notes	Please note that this antibody is reactive to Mouse and derived from the same host, Mouse. Additional Mouse on Mouse blocking steps may be required for IHC and ICC experiments. Please contact Technical Support for more information.
Immunogen	Full-length recombinant human Rho A

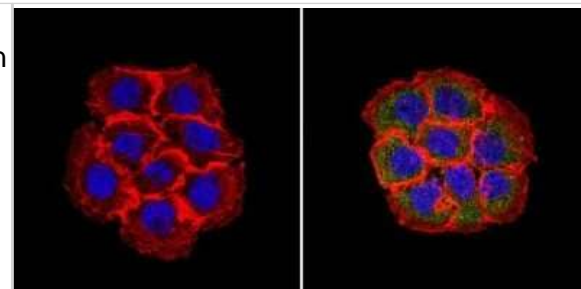
Product Application Details	
Applications	Western Blot, Immunocytochemistry/ Immunofluorescence, Immunohistochemistry, Immunohistochemistry-Paraffin, Immunoprecipitation
Recommended Dilutions	Western Blot 1:500 - 1:1500, Immunohistochemistry 1:20 - 1:200, Immunocytochemistry/ Immunofluorescence 1:10 - 1:200, Immunoprecipitation 2 ug, Immunohistochemistry-Paraffin 1:20 - 1:200

**Images**

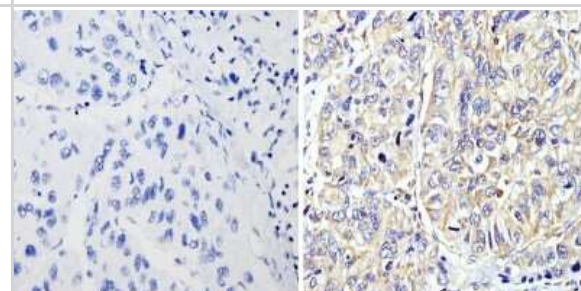
Western Blot: RhoA Antibody (1A11-4G10) [NBP2-22528] - Analysis of 25 ug of various whole cell lysates or 0.5 ug of purified protein (full-length His-RhoA, truncated GST-RhoB or full-length GST-RhoC fusion) per well onto a 4-20% Tris-HCl polyacrylamide gel.



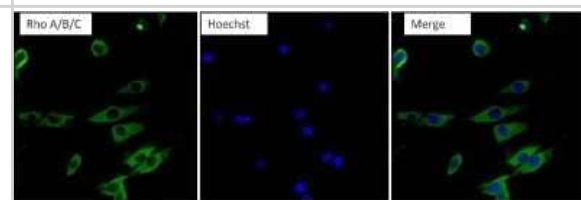
Immunocytochemistry/Immunofluorescence: RhoA Antibody (1A11-4G10) [NBP2-22528] - Analysis of Rho A/B/C (green) showing staining in the in the cytoplasm of A431 cells (right) compared to a negative control without primary antibody (left).



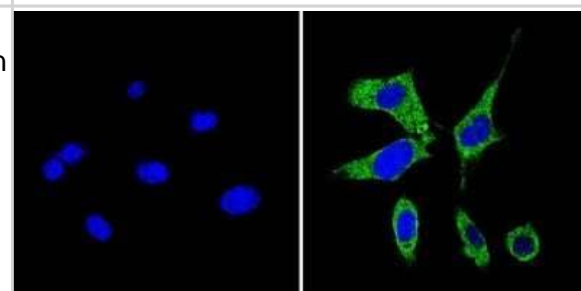
Immunohistochemistry-Paraffin: RhoA Antibody (1A11-4G10) [NBP2-22528] - Analysis showing staining in the cytoplasm of human hepatocarcinoma (right) compared with a negative control without primary antibody (left).



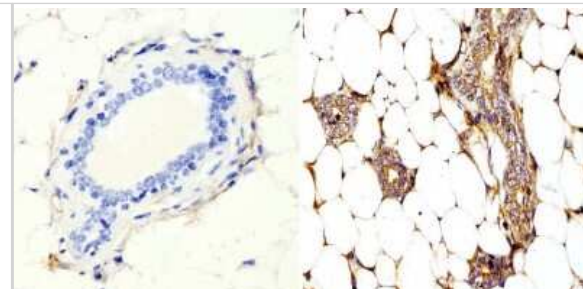
Immunocytochemistry/Immunofluorescence: RhoA Antibody (1A11-4G10) [NBP2-22528] - Analysis of RhoA/B/C (green) in NIH3T3 cells. Formalin fixed cells were permeabilized with 0.1% Triton X-100 in TBS for 10 minutes at room temperature and blocked with 1% BSA/TBST for 15 minutes at room temperature. Cells were probed with a RhoA/B/C monoclonal antibody at a dilution of 1:100 for at least 1 hour at room temperature, washed with PBS, and incubated with DyLight 488-conjugated goat-anti-mouse IgG secondary antibody at a dilution of 1:400 for 30 minutes at room temperature. Nuclei (blue) were stained with Hoechst 33342 dye.



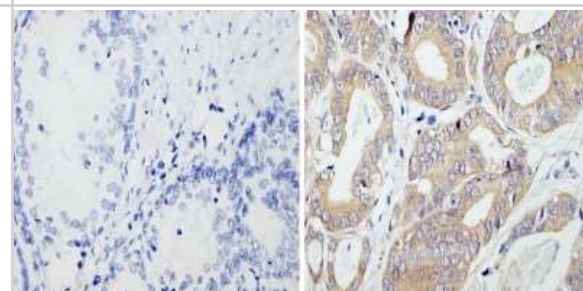
Immunocytochemistry/Immunofluorescence: RhoA Antibody (1A11-4G10) [NBP2-22528] - Analysis of Rho A/B/C (green) showing staining in the in the cytoplasm of NIH-3T3 cells (right) compared to a negative control without primary antibody (left).



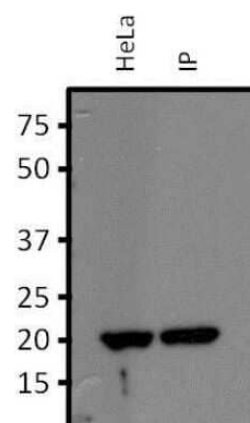
**Immunohistochemistry-Paraffin: RhoA Antibody (1A11-4G10) [NBP2-22528]** - Analysis of showing staining in the cytoplasm of mouse breast tissue (right) compared with a negative control without primary antibody (left).



**Immunohistochemistry-Paraffin: RhoA Antibody (1A11-4G10) [NBP2-22528]** - Analysis showing staining in the cytoplasm of human prostate carcinoma (right) compared with a negative control without primary antibody (left).



**Immunoprecipitation: RhoA Antibody (1A11-4G10) [NBP2-22528]** - Analysis of RhoA/B/C was performed on HeLa cells. Antigen-antibody complexes were formed by incubating 750 ug of HeLa cell lysate with 2 ug of a RhoA/B/C monoclonal antibody overnight on a rocking platform at 4C. The immune complexes were captured on 50 ul Protein A/G Plus Agarose, washed extensively, and eluted with 5X Lane Marker Reducing Sample Buffer. Eluted sample (right lane) and 25 ug of HeLa cell lysate (left lane) were resolved on a 4-20% Tris-HCl polyacrylamide gel, transferred to a PVDF membrane, and blocked with 5% BSA/TBS-0.1%Tween for at least 1 hour. The membrane was probed with a Rho A/B/C monoclonal antibody at a dilution of 1:1000 overnight rotating at 4C, washed in TBST, and probed with Clean-blot IP Detection Reagent at a dilution of 1:2500 for at least 1 hour.



## Publications

Hosseini K, Frenzel A, Fischer-Friedrich E EMT induces characteristic changes of Rho GTPases and downstream effectors with a mitosis-specific twist Physical biology 2023-09-12 [PMID: 37652025] (ICC/IF, Human)

Guo Y, Lu X, Chen Y et al. Opposing roles of ZEB1 in the cytoplasm and nucleus control cytoskeletal assembly and YAP1 activity Cell reports 2022-10-04 [PMID: 36198275]



### **Novus Biologicals USA**

10730 E. Briarwood Avenue  
Centennial, CO 80112  
USA  
Phone: 303.730.1950  
Toll Free: 1.888.506.6887  
Fax: 303.730.1966  
nb-customerservice@bio-techne.com

### **Bio-Techne Canada**

21 Canmotor Ave  
Toronto, ON M8Z 4E6  
Canada  
Phone: 905.827.6400  
Toll Free: 855.668.8722  
Fax: 905.827.6402  
canada.inquires@bio-techne.com

### **Bio-Techne Ltd**

19 Barton Lane  
Abingdon Science Park  
Abingdon, OX14 3NB, United Kingdom  
Phone: (44) (0) 1235 529449  
Free Phone: 0800 37 34 15  
Fax: (44) (0) 1235 533420  
info.EMEA@bio-techne.com

### **General Contact Information**

[www.novusbio.com](http://www.novusbio.com)  
Technical Support: nb-technical@bio-techne.com  
Orders: nb-customerservice@bio-techne.com  
General: novus@novusbio.com

### **Products Related to NBP2-22528**

HAF007	Goat anti-Mouse IgG Secondary Antibody [HRP]
NB720-B	Rabbit anti-Mouse IgG (H+L) Secondary Antibody [Biotin]
NBP1-97005-0.5mg	Mouse IgG1 Isotype Control (MG1)
NBP1-50933-0.1mg	Recombinant Human RhoA His Protein

### **Limitations**

This product is for research use only and is not approved for use in humans or in clinical diagnosis. Primary Antibodies are guaranteed for 1 year from date of receipt.

For more information on our 100% guarantee, please visit [www.novusbio.com/guarantee](http://www.novusbio.com/guarantee)

Earn gift cards/discounts by submitting a review: [www.novusbio.com/reviews/submit/NBP2-22528](http://www.novusbio.com/reviews/submit/NBP2-22528)

Earn gift cards/discounts by submitting a publication using this product:  
[www.novusbio.com/publications](http://www.novusbio.com/publications)

