

Product Datasheet

Cytohesin 2 Antibody (10A12)

NBP2-22514

Unit Size: 100 ug

Store at -20C. Avoid freeze-thaw cycles.

www.novusbio.com



technical@novusbio.com

Protocols, Publications, Related Products, Reviews, Research Tools and Images at:
www.novusbio.com/NBP2-22514

Updated 10/23/2024 v.20.1

Earn rewards for product
reviews and publications.

Submit a publication at www.novusbio.com/publications

Submit a review at www.novusbio.com/reviews/destination/NBP2-22514



NBP2-22514**Cytohesin 2 Antibody (10A12)****Product Information**

Unit Size	100 ug
Concentration	1 mg/ml
Storage	Store at -20C. Avoid freeze-thaw cycles.
Clonality	Monoclonal
Clone	10A12
Preservative	0.05% Sodium Azide
Isotype	IgG1
Purity	PEG purified
Buffer	PBS with 1 mg/ml BSA

Product Description

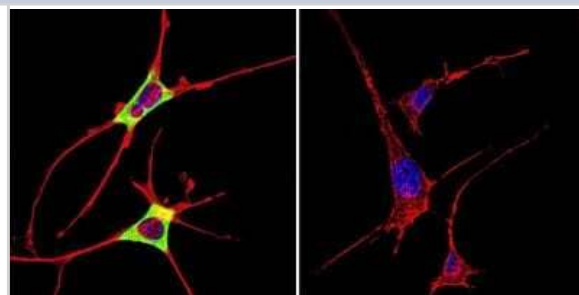
Host	Mouse
Gene ID	9266
Gene Symbol	CYTH2
Species	Human, Mouse
Immunogen	Purified, His-tagged cytohesin-2.

Product Application Details

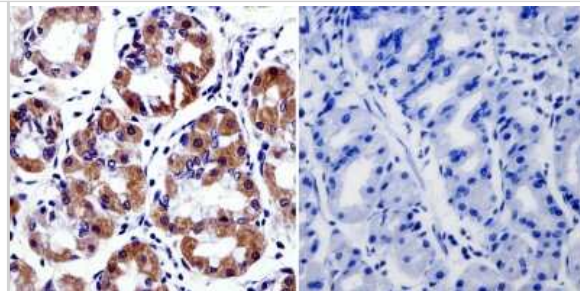
Applications	Immunocytochemistry/ Immunofluorescence, Immunohistochemistry, Immunohistochemistry-Paraffin, Immunoprecipitation, Western Blot (Negative)
Recommended Dilutions	Immunohistochemistry 1:25-1:200, Immunocytochemistry/ Immunofluorescence 1:20, Immunoprecipitation 1:10 - 1:500, Immunohistochemistry-Paraffin 1:25 - 1:200, Western Blot (Negative)

Images

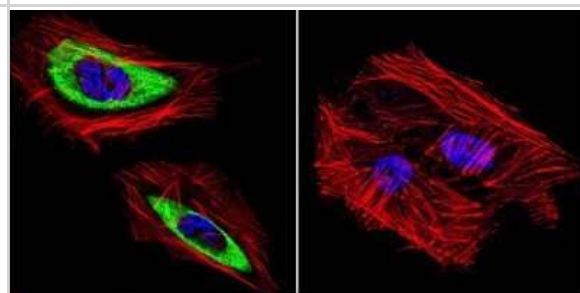
Immunocytochemistry/Immunofluorescence: Cytohesin 2 Antibody (10A12) [NBP2-22514] - Analysis of Cytohesin 2 in NIH-3T3 Cells. Cells were grown on chamber slides and fixed with formaldehyde prior to staining. Cells were probed without (control) or with a Cytohesin 2 monoclonal antibody at a dilution of 1:100 overnight at 4C, washed with PBS and incubated with a DyLight-488 conjugated secondary antibody. Cytohesin 2 staining (green), F-Actin staining with Phalloidin (red) and nuclei with DAPI (blue) is shown.



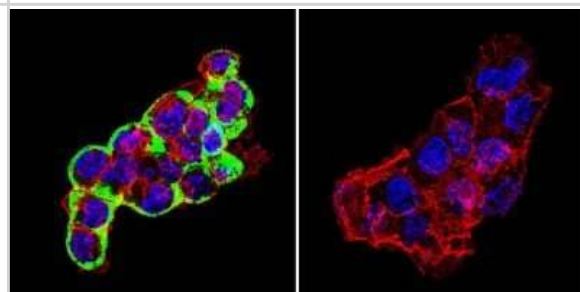
Immunohistochemistry-Paraffin: Cytohesin 2 Antibody (10A12) [NBP2-22514] - Normal biopsies of deparaffinized Human stomach tissue.



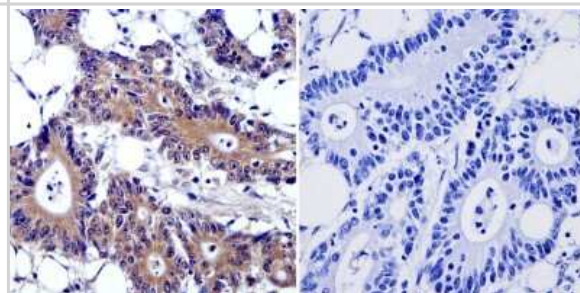
Immunocytochemistry/Immunofluorescence: Cytohesin 2 Antibody (10A12) [NBP2-22514] - Analysis of Cytohesin 2 in HeLa Cells. Cells were grown on chamber slides and fixed with formaldehyde prior to staining. Cells were probed without (control) or with a Cytohesin 2 monoclonal antibody at a dilution of 1:100 overnight at 4C, washed with PBS and incubated with a DyLight-488 conjugated secondary antibody. Cytohesin 2 staining (green), F-Actin staining with Phalloidin (red) and nuclei with DAPI (blue) is shown.



Immunocytochemistry/Immunofluorescence: Cytohesin 2 Antibody (10A12) [NBP2-22514] - Analysis of Cytohesin 2 in HepG2 Cells. Cells were grown on chamber slides and fixed with formaldehyde prior to staining. Cells were probed without (control) or with a Cytohesin 2 monoclonal antibody at a dilution of 1:100 overnight at 4C, washed with PBS and incubated with a DyLight-488 conjugated secondary antibody. Cytohesin 2 staining (green), F-Actin staining with Phalloidin (red) and nuclei with DAPI (blue) is shown.



Immunohistochemistry-Paraffin: Cytohesin 2 Antibody (10A12) [NBP2-22514] - Cancer biopsies of deparaffinized Human colon carcinoma tissue.





Novus Biologicals USA

10730 E. Briarwood Avenue
Centennial, CO 80112
USA
Phone: 303.730.1950
Toll Free: 1.888.506.6887
Fax: 303.730.1966
nb-customerservice@bio-techne.com

Bio-Techne Canada

21 Canmotor Ave
Toronto, ON M8Z 4E6
Canada
Phone: 905.827.6400
Toll Free: 855.668.8722
Fax: 905.827.6402
canada.inquires@bio-techne.com

Bio-Techne Ltd

19 Barton Lane
Abingdon Science Park
Abingdon, OX14 3NB, United Kingdom
Phone: (44) (0) 1235 529449
Free Phone: 0800 37 34 15
Fax: (44) (0) 1235 533420
info.EMEA@bio-techne.com

General Contact Information

www.novusbio.com
Technical Support: nb-technical@bio-techne.com
Orders: nb-customerservice@bio-techne.com
General: novus@novusbio.com

Products Related to NBP2-22514

HAF007	Goat anti-Mouse IgG Secondary Antibody [HRP]
NB720-B	Rabbit anti-Mouse IgG (H+L) Secondary Antibody [Biotin]
NBP1-97005-0.5mg	Mouse IgG1 Isotype Control (MG1)
NBP2-22983	Recombinant Human Cytohesin 2 His Protein

Limitations

This product is for research use only and is not approved for use in humans or in clinical diagnosis. Primary Antibodies are guaranteed for 1 year from date of receipt.

For more information on our 100% guarantee, please visit www.novusbio.com/guarantee

Earn gift cards/discounts by submitting a review: www.novusbio.com/reviews/submit/NBP2-22514

Earn gift cards/discounts by submitting a publication using this product:
www.novusbio.com/publications

