

# Product Datasheet

## Cytohesin-1 Antibody (6G11)

### NBP2-22513

Unit Size: 100ug

Store at -20C. Avoid freeze-thaw cycles.

[www.novusbio.com](http://www.novusbio.com)



[technical@novusbio.com](mailto:technical@novusbio.com)

Protocols, Publications, Related Products, Reviews, Research Tools and Images at:  
[www.novusbio.com/NBP2-22513](http://www.novusbio.com/NBP2-22513)

Updated 10/23/2024 v.20.1

Earn rewards for product  
reviews and publications.

Submit a publication at [www.novusbio.com/publications](http://www.novusbio.com/publications)

Submit a review at [www.novusbio.com/reviews/destination/NBP2-22513](http://www.novusbio.com/reviews/destination/NBP2-22513)



**NBP2-22513****Cytohesin-1 Antibody (6G11)**

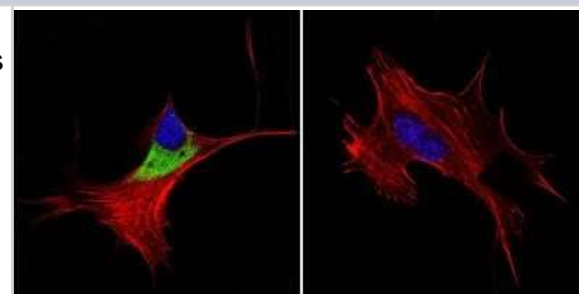
<b>Product Information</b>	
<b>Unit Size</b>	100ug
<b>Concentration</b>	1 mg/ml
<b>Storage</b>	Store at -20C. Avoid freeze-thaw cycles.
<b>Clonality</b>	Monoclonal
<b>Clone</b>	6G11
<b>Preservative</b>	0.05% Sodium Azide
<b>Isotype</b>	IgG1
<b>Purity</b>	PEG purified
<b>Buffer</b>	PBS with 1 mg/ml BSA

<b>Product Description</b>	
<b>Host</b>	Mouse
<b>Gene ID</b>	9267
<b>Gene Symbol</b>	CYTH1
<b>Species</b>	Human
<b>Immunogen</b>	Purified, His-tagged cytohesin-1.

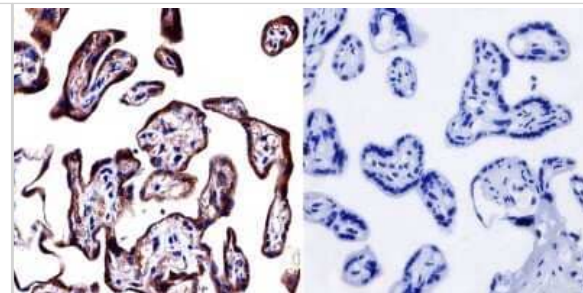
<b>Product Application Details</b>	
<b>Applications</b>	Western Blot, Immunocytochemistry/ Immunofluorescence, Immunohistochemistry, Immunohistochemistry-Paraffin, Immunoprecipitation
<b>Recommended Dilutions</b>	Western Blot 1.0 ug/ml, Immunohistochemistry 1:200 - 500, Immunocytochemistry/ Immunofluorescence 1:100, Immunoprecipitation 1:10 - 1:500, Immunohistochemistry-Paraffin 1:200 - 500
<b>Application Notes</b>	WB: Detects an approx. 48 kDa band representing both cytohesin-1 and cytohesin-2. IP: Only precipitates cytohesin-2.

**Images**

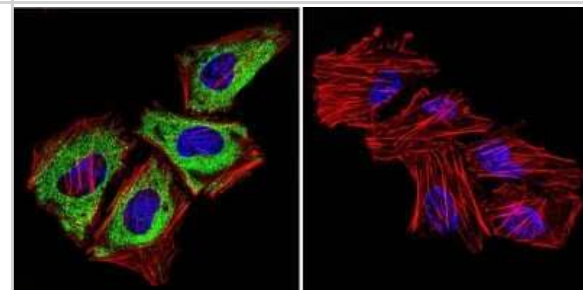
Immunocytochemistry/Immunofluorescence: Cytohesin-1 Antibody (6G11) [NBP2-22513] - Analysis of Cytohesin 1,2 in NIH-3T3 Cells. Cells were grown on chamber slides and fixed with formaldehyde prior to staining. Cells were probed without (control) or with a Cytohesin 1,2 monoclonal antibody at a dilution of 1:100 overnight at 4C, washed with PBS and incubated with a DyLight-488 conjugated secondary antibody. Cytohesin 1,2 staining (green), F-Actin staining with Phalloidin (red) and nuclei with DAPI (blue) is shown.



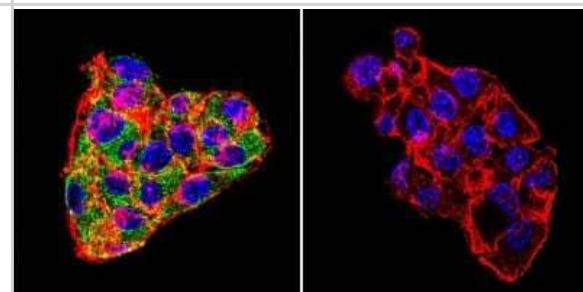
Immunohistochemistry: Cytohesin-1 Antibody (6G11) [NBP2-22513] - Normal biopsies of deparaffinized human placenta tissue.



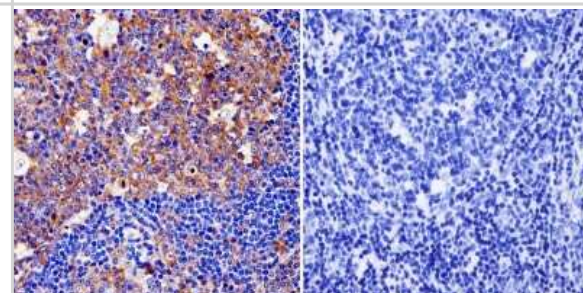
Immunocytochemistry/Immunofluorescence: Cytohesin-1 Antibody (6G11) [NBP2-22513] - Analysis of Cytohesin 1,2 in HeLa Cells. Cells were grown on chamber slides and fixed with formaldehyde prior to staining. Cells were probed without (control) or with a Cytohesin 1,2 monoclonal antibody at a dilution of 1:100 overnight at 4C, washed with PBS and incubated with a DyLight-488 conjugated secondary antibody. Cytohesin 1,2 staining (green), F-Actin staining with Phalloidin (red) and nuclei with DAPI (blue) is shown.



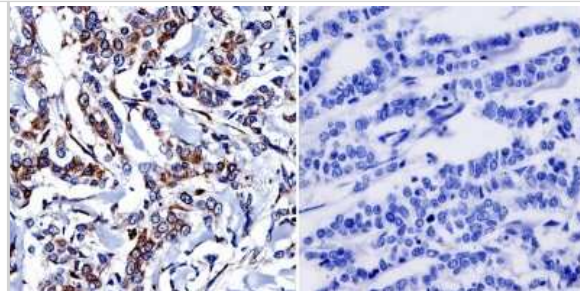
Immunocytochemistry/Immunofluorescence: Cytohesin-1 Antibody (6G11) [NBP2-22513] - Analysis of Cytohesin 1,2 in HepG2 Cells. Cells were grown on chamber slides and fixed with formaldehyde prior to staining. Cells were probed without (control) or with a Cytohesin 1,2 monoclonal antibody at a dilution of 1:100 overnight at 4C, washed with PBS and incubated with a DyLight-488 conjugated secondary antibody. Cytohesin 1,2 staining (green), F-Actin staining with Phalloidin (red) and nuclei with DAPI (blue) is shown.



Immunohistochemistry-Paraffin: Cytohesin-1 Antibody (6G11) [NBP2-22513] - Normal biopsies of deparaffinized human tonsil tissue.



Immunohistochemistry-Paraffin: Cytohesin-1 Antibody (6G11) [NBP2-22513] - Normal biopsies of deparaffinized human breast carcinoma.





### **Novus Biologicals USA**

10730 E. Briarwood Avenue  
Centennial, CO 80112  
USA  
Phone: 303.730.1950  
Toll Free: 1.888.506.6887  
Fax: 303.730.1966  
nb-customerservice@bio-techne.com

### **Bio-Techne Canada**

21 Canmotor Ave  
Toronto, ON M8Z 4E6  
Canada  
Phone: 905.827.6400  
Toll Free: 855.668.8722  
Fax: 905.827.6402  
canada.inquires@bio-techne.com

### **Bio-Techne Ltd**

19 Barton Lane  
Abingdon Science Park  
Abingdon, OX14 3NB, United Kingdom  
Phone: (44) (0) 1235 529449  
Free Phone: 0800 37 34 15  
Fax: (44) (0) 1235 533420  
info.EMEA@bio-techne.com

### **General Contact Information**

www.novusbio.com  
Technical Support: nb-technical@bio-techne.com  
Orders: nb-customerservice@bio-techne.com  
General: novus@novusbio.com

### **Products Related to NBP2-22513**

---

HAF007	Goat anti-Mouse IgG Secondary Antibody [HRP]
NB720-B	Rabbit anti-Mouse IgG (H+L) Secondary Antibody [Biotin]
NBP1-97005-0.5mg	Mouse IgG1 Isotype Control (MG1)
NBP2-52108-0.1mg	Recombinant Human Cytohesin-1 His Protein

---

### **Limitations**

This product is for research use only and is not approved for use in humans or in clinical diagnosis. Primary Antibodies are guaranteed for 1 year from date of receipt.

For more information on our 100% guarantee, please visit [www.novusbio.com/guarantee](http://www.novusbio.com/guarantee)

Earn gift cards/discounts by submitting a review: [www.novusbio.com/reviews/submit/NBP2-22513](http://www.novusbio.com/reviews/submit/NBP2-22513)

Earn gift cards/discounts by submitting a publication using this product:  
[www.novusbio.com/publications](http://www.novusbio.com/publications)

