

Product Datasheet

Cytohesin-1 Antibody (2E11)

NBP2-22512

Unit Size: 100ug

Store at -20C. Avoid freeze-thaw cycles.

www.novusbio.com



technical@novusbio.com

Protocols, Publications, Related Products, Reviews, Research Tools and Images at:
www.novusbio.com/NBP2-22512

Updated 5/15/2025 v.20.1

Earn rewards for product
reviews and publications.

Submit a publication at www.novusbio.com/publications

Submit a review at www.novusbio.com/reviews/destination/NBP2-22512



NBP2-22512**Cytohesin-1 Antibody (2E11)**

Product Information	
Unit Size	100ug
Concentration	1 mg/ml
Storage	Store at -20C. Avoid freeze-thaw cycles.
Clonality	Monoclonal
Clone	2E11
Preservative	0.05% Sodium Azide
Isotype	IgG1
Purity	PEG purified
Buffer	PBS with 1 mg/ml BSA

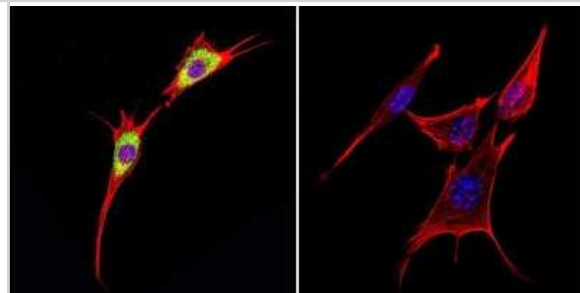
Product Description	
Host	Mouse
Gene ID	9267
Gene Symbol	CYTH1
Species	Human
Immunogen	Purified, His-tagged cytohesin-1.

Product Application Details	
Applications	Western Blot, Flow Cytometry, Immunocytochemistry/ Immunofluorescence
Recommended Dilutions	Western Blot 1.0 ug/ml, Flow Cytometry 3 - 5 ug / 10 ⁶ cells, Immunocytochemistry/ Immunofluorescence 1:20

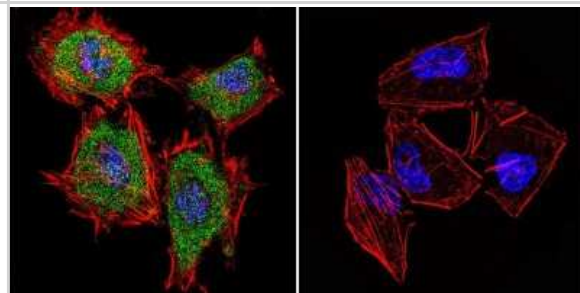


Images

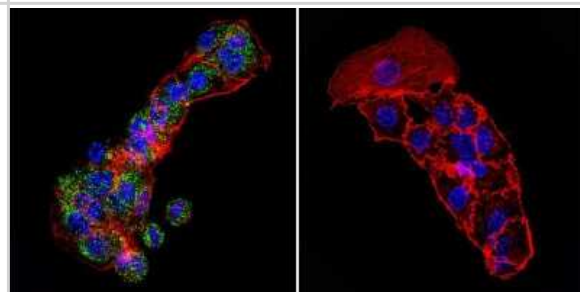
Immunocytochemistry/Immunofluorescence: Cytohesin-1 Antibody (2E +11) [NBP2-22512] - Analysis of Cytohesin 1 in NIH-3T3 Cells. Cells were grown on chamber slides and fixed with formaldehyde prior to staining. Cells were probed without (control) or with a Cytohesin 1 monoclonal antibody at a dilution of 1:20 overnight at 4C, washed with PBS and incubated with a DyLight-488 conjugated secondary antibody. Cytohesin 1 staining (green), F-Actin staining with Phalloidin (red) and nuclei with DAPI (blue) is shown.



Immunocytochemistry/Immunofluorescence: Cytohesin-1 Antibody (2E +11) [NBP2-22512] - Analysis of Cytohesin 1 in HeLa Cells. Cells were grown on chamber slides and fixed with formaldehyde prior to staining. Cells were probed without (control) or with a Cytohesin 1 monoclonal antibody at a dilution of 1:20 overnight at 4C, washed with PBS and incubated with a DyLight-488 conjugated secondary antibody. Cytohesin 1 staining (green), F-Actin staining with Phalloidin (red) and nuclei with DAPI (blue) is shown.



Immunocytochemistry/Immunofluorescence: Cytohesin-1 Antibody (2E +11) [NBP2-22512] - Analysis of Cytohesin 1 in HepG2 Cells. Cells were grown on chamber slides and fixed with formaldehyde prior to staining. Cells were probed without (control) or with a Cytohesin 1 monoclonal antibody at a dilution of 1:20 overnight at 4C, washed with PBS and incubated with a DyLight-488 conjugated secondary antibody. Cytohesin 1 staining (green), F-Actin staining with Phalloidin (red) and nuclei with DAPI (blue) is shown.





Novus Biologicals USA

10730 E. Briarwood Avenue
Centennial, CO 80112
USA
Phone: 303.730.1950
Toll Free: 1.888.506.6887
Fax: 303.730.1966
nb-customerservice@bio-techne.com

Bio-Techne Canada

21 Canmotor Ave
Toronto, ON M8Z 4E6
Canada
Phone: 905.827.6400
Toll Free: 855.668.8722
Fax: 905.827.6402
canada.inquires@bio-techne.com

Bio-Techne Ltd

19 Barton Lane
Abingdon Science Park
Abingdon, OX14 3NB, United Kingdom
Phone: (44) (0) 1235 529449
Free Phone: 0800 37 34 15
Fax: (44) (0) 1235 533420
info.EMEA@bio-techne.com

General Contact Information

www.novusbio.com
Technical Support: nb-technical@bio-
techne.com
Orders: nb-customerservice@bio-techne.com
General: novus@novusbio.com

Limitations

This product is for research use only and is not approved for use in humans or in clinical diagnosis. Primary Antibodies are guaranteed for 1 year from date of receipt.

For more information on our 100% guarantee, please visit www.novusbio.com/guarantee

Earn gift cards/discounts by submitting a review: www.novusbio.com/reviews/submit/NBP2-22512

Earn gift cards/discounts by submitting a publication using this product:
www.novusbio.com/publications

