

Product Datasheet

Mesothelioma Antibody (ME1) - BSA Free NBP2-22442

Unit Size: 25ug

Store at -20C. Avoid freeze-thaw cycles.

www.novusbio.com



technical@novusbio.com

Protocols, Publications, Related Products, Reviews, Research Tools and Images at:
www.novusbio.com/NBP2-22442

Updated 5/15/2025 v.20.1

Earn rewards for product
reviews and publications.

Submit a publication at www.novusbio.com/publications

Submit a review at www.novusbio.com/reviews/destination/NBP2-22442



NBP2-22442

Mesothelioma Antibody (ME1) - BSA Free

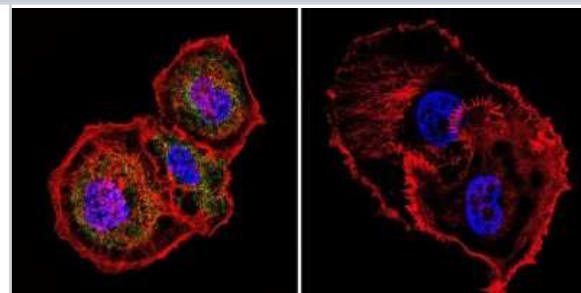
Product Information	
Unit Size	25ug
Concentration	LYOPH mg/ml
Storage	Store at -20C. Avoid freeze-thaw cycles.
Clonality	Monoclonal
Clone	ME1
Preservative	0.05% Sodium Azide
Reconstitution Instructions	Reconstitute with PBS.
Isotype	IgG1
Purity	Protein A purified
Buffer	PBS

Product Description	
Host	Mouse
Gene ID	338340
Gene Symbol	MMS
Species	Human
Immunogen	Mesothelioma cell line SPC111.

Product Application Details	
Applications	Immunocytochemistry/ Immunofluorescence, Immunohistochemistry, Immunohistochemistry-Paraffin, Radioimmunoassay, Western Blot (Negative)
Recommended Dilutions	Immunohistochemistry 2 - 5 ug/ml, Immunocytochemistry/ Immunofluorescence 1:10-1:500, Immunohistochemistry-Paraffin 2 - 5 ug/ml, Radioimmunoassay 1:100 - 1:2000, Western Blot (Negative)
Application Notes	Detects a surface membrane glycoprotein preferentially expressed on normal and malignant mesothelial cells from human tissues. Does not detect most lung adenocarcinoma cell lines, or well and moderately differentiated pulmonary adenocarcinomas. Does not work in WB. IHC: Staining of sarcomatoid mesotheliomas with this antibody results in intense staining of mesothelial cells; it will not react with formalin-fixed, or alcohol-fixed, paraffin embedded tissues. Use of frozen, acetone fixed sections or cell suspensions is recommended.

Images

Immunocytochemistry/Immunofluorescence: Mesothelioma Antibody (ME1) [NBP2-22442] - Analysis of Mesothelioma in MCF-7 cells. Cells were grown on chamber slides and fixed with formaldehyde prior to staining. Cells were probed without (control) or with a Mesothelioma monoclonal antibody at a dilution of 1:20 overnight at 4C, washed with PBS and incubated with a DyLight-488 conjugated secondary antibody. Mesothelioma staining (green), F-Actin staining with Phalloidin (red) and nuclei with DAPI (blue) is shown.





Novus Biologicals USA

10730 E. Briarwood Avenue
Centennial, CO 80112
USA
Phone: 303.730.1950
Toll Free: 1.888.506.6887
Fax: 303.730.1966
nb-customerservice@bio-techne.com

Bio-Techne Canada

21 Canmotor Ave
Toronto, ON M8Z 4E6
Canada
Phone: 905.827.6400
Toll Free: 855.668.8722
Fax: 905.827.6402
canada.inquires@bio-techne.com

Bio-Techne Ltd

19 Barton Lane
Abingdon Science Park
Abingdon, OX14 3NB, United Kingdom
Phone: (44) (0) 1235 529449
Free Phone: 0800 37 34 15
Fax: (44) (0) 1235 533420
info.EMEA@bio-techne.com

General Contact Information

www.novusbio.com
Technical Support: nb-technical@bio-
techne.com
Orders: nb-customerservice@bio-techne.com
General: novus@novusbio.com

Limitations

This product is for research use only and is not approved for use in humans or in clinical diagnosis. Primary Antibodies are guaranteed for 1 year from date of receipt.

For more information on our 100% guarantee, please visit www.novusbio.com/guarantee

Earn gift cards/discounts by submitting a review: www.novusbio.com/reviews/submit/NBP2-22442

Earn gift cards/discounts by submitting a publication using this product:
www.novusbio.com/publications

