

Product Datasheet

EpCAM/TROP1 Antibody (60N5D8) - BSA Free NBP2-22381

Unit Size: 0.1 mg

Store at 4C short term. Aliquot and store at -20C long term. Avoid freeze-thaw cycles.

www.novusbio.com



technical@novusbio.com

Publications: 1

Protocols, Publications, Related Products, Reviews, Research Tools and Images at:
www.novusbio.com/NBP2-22381

Updated 10/23/2024 v.20.1

Earn rewards for product
reviews and publications.

Submit a publication at www.novusbio.com/publications

Submit a review at www.novusbio.com/reviews/destination/NBP2-22381



NBP2-22381

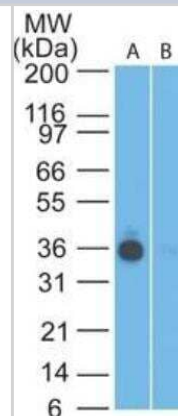
EpCAM/TROP1 Antibody (60N5D8) - BSA Free

Product Information	
Unit Size	0.1 mg
Concentration	1.0 mg/ml
Storage	Store at 4C short term. Aliquot and store at -20C long term. Avoid freeze-thaw cycles.
Clonality	Monoclonal
Clone	60N5D8
Preservative	0.05% Sodium Azide
Isotype	IgG2b Kappa
Purity	Protein G purified
Buffer	PBS
Product Description	
Host	Mouse
Gene ID	4072
Gene Symbol	EPCAM
Species	Human
Immunogen	Synthetic peptide made to an internal portion of the human EpCAM/TROP1 protein (between amino acids 289-314) [UniProt P16422]
Product Application Details	
Applications	Western Blot, Flow Cytometry, Immunohistochemistry, Immunohistochemistry-Paraffin
Recommended Dilutions	Western Blot 2-5 ug/ml, Flow Cytometry 0.2-1 ug/10 ⁶ cells, Immunohistochemistry 1:10-1:500, Immunohistochemistry-Paraffin 1:200-1:400

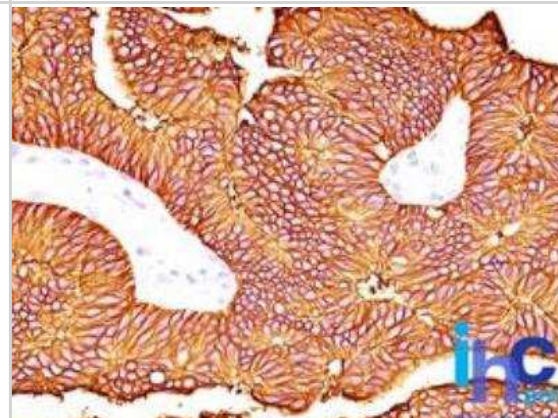


Images

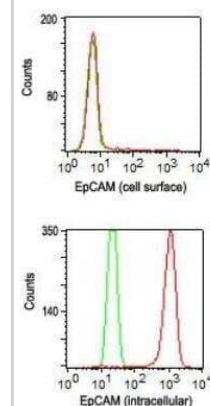
Western Blot: EpCAM/TROP1 Antibody (60N5D8) [NBP2-22381] - Analysis of EpCAM in HT-29 lysate in the (A) absence and (B) presence of immunizing peptide using EpCAM antibody at 2 ug/ml. Goat anti-mouse Ig HRP secondary antibody and PicoTect ECL substrate solution were used for this test.



Immunohistochemistry-Paraffin: EpCAM/TROP1 Antibody (60N5D8) [NBP2-22381] - FFPE human colon stained with EpCAM antibody (1:200), peroxidase-conjugate and DAB chromogen.



Flow Cytometry: EpCAM/TROP1 Antibody (60N5D8) [NBP2-22381] - Analysis of HT-29 cells using EpCAM antibody at 0.2 ug/10⁶ cells. this antibody was used for this test. Top picture shows no cell surface staining seen, bottom shows intracellular staining of EpCAM (red represents EpCAM antibody and green represents isotype control).



Publications

MOHEBAT H. GOUDA M.D. M, NEHAL S. ZAFER M.D. T, ELBAZ M.D. M Chromophobe Renal Cell Carcinoma, Oncocytoma and Clear Cell Carcinoma: A Compative Immunohistochemical Study The Medical Journal of Cairo University 2020-03-01 (IF/IHC, Human)



Novus Biologicals USA

10730 E. Briarwood Avenue
Centennial, CO 80112
USA
Phone: 303.730.1950
Toll Free: 1.888.506.6887
Fax: 303.730.1966
nb-customerservice@bio-techne.com

Bio-Techne Canada

21 Canmotor Ave
Toronto, ON M8Z 4E6
Canada
Phone: 905.827.6400
Toll Free: 855.668.8722
Fax: 905.827.6402
canada.inquires@bio-techne.com

Bio-Techne Ltd

19 Barton Lane
Abingdon Science Park
Abingdon, OX14 3NB, United Kingdom
Phone: (44) (0) 1235 529449
Free Phone: 0800 37 34 15
Fax: (44) (0) 1235 533420
info.EMEA@bio-techne.com

General Contact Information

www.novusbio.com
Technical Support: nb-technical@bio-techne.com
Orders: nb-customerservice@bio-techne.com
General: novus@novusbio.com

Products Related to NBP2-22381

HAF007	Goat anti-Mouse IgG Secondary Antibody [HRP]
NB720-B	Rabbit anti-Mouse IgG (H+L) Secondary Antibody [Biotin]
NBP1-43317-0.5mg	Mouse IgG2b Kappa Light Chain Isotype Control (MG2b)
NBP2-22381APC	EpCAM/TROP1 Antibody (60N5D8) [Allophycocyanin]

Limitations

This product is for research use only and is not approved for use in humans or in clinical diagnosis. Primary Antibodies are guaranteed for 1 year from date of receipt.

For more information on our 100% guarantee, please visit www.novusbio.com/guarantee

Earn gift cards/discounts by submitting a review: www.novusbio.com/reviews/submit/NBP2-22381

Earn gift cards/discounts by submitting a publication using this product:
www.novusbio.com/publications

