

Product Datasheet

SMPD1 Antibody - BSA Free

NBP2-22365-100uL

Unit Size: 100 uL

Store at 4C short term. Aliquot and store at -20C long term. Avoid freeze-thaw cycles.

www.novusbio.com



technical@novusbio.com

Protocols, Publications, Related Products, Reviews, Research Tools and Images at:
www.novusbio.com/NBP2-22365

Updated 2/23/2025 v.20.1

Earn rewards for product
reviews and publications.

Submit a publication at www.novusbio.com/publications

Submit a review at www.novusbio.com/reviews/destination/NBP2-22365



NBP2-22365-100uL

SMPD1 Antibody - BSA Free

Product Information	
Unit Size	100 uL
Concentration	Please see the vial label for concentration. If unlisted please contact technical services.
Storage	Store at 4C short term. Aliquot and store at -20C long term. Avoid freeze-thaw cycles.
Clonality	Polyclonal
Preservative	0.09% Sodium Azide
Isotype	IgG
Purity	Protein A purified
Buffer	PBS (pH 7.2)

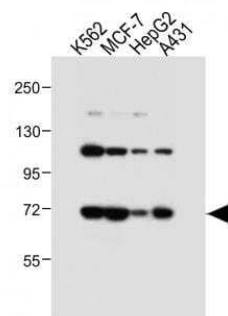
Product Description	
Description	May be stored at 4C for short-term only. Aliquot to avoid repeated freezing and thawing. Store at -20C. Aliquots are stable for 12 months after receipt. For maximum recovery of product, centrifuge the original vial after thawing and prior to removing the cap.
Host	Rabbit
Gene ID	6609
Gene Symbol	SMPD1
Species	Human
Immunogen	KLH-conjugated synthetic peptide mapping to a fragment of residues within amino acids 391-419 in the C-terminal region of human SMPD1 (UniProt Accession #P17405). Species sequence homology: bovine
Notes	May be stored at 4C for short-term only. Aliquot to avoid repeated freezing and thawing. Store at -20C. Aliquots are stable for 12 months after receipt. For maximum recovery of product, centrifuge the original vial after thawing and prior to removing the cap.

Product Application Details	
Applications	Western Blot, ELISA, Flow Cytometry, Immunohistochemistry, Immunohistochemistry-Paraffin
Recommended Dilutions	Western Blot 1:4000, Flow Cytometry 1:25, ELISA 1:1000, Immunohistochemistry 1:500, Immunohistochemistry-Paraffin 1:500
Application Notes	Immunohistochemistry (FFPE): Requires HIER using EDTA, pH 8.0 buffer pH9.0 prior to staining. Optimal dilutions to be determined by the researcher.

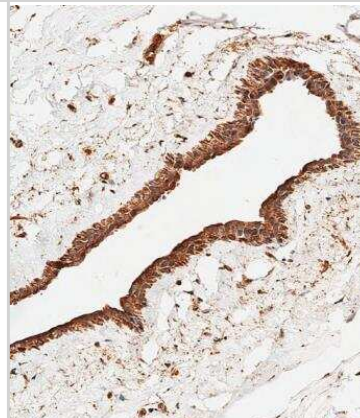


Images

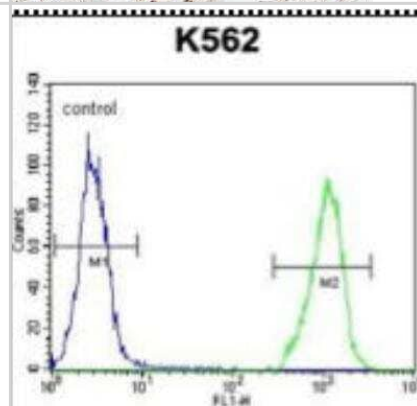
Western Blot: SMPD1 Antibody [NBP2-22365] - Lane 1: K562 whole cell lysate Lane 2: MCF-7 whole cell lysate Lane 3: HepG2 whole cell lysate Lane 4: A431 whole cell lysate |Lysates/proteins at 20 ug per lane. Secondary: IgG (HRP) Goat Anti-Rabbit (1:10000) Predicted band size: 70kD Blocking/Dilution buffer: 5% NFDm/TBST.



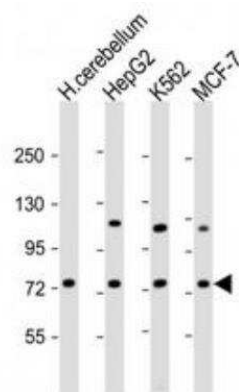
Immunohistochemistry-Paraffin: SMPD1 Antibody [NBP2-22365] - Immunohistochemical analysis of paraffin-embedded human breast tissue using SMPD1 antibody (1:500) after HIER using EDTA buffer pH9.0 prior to staining performed on the Leica(R) BOND RXm. An undiluted biotinylated CRF Anti-Polyvalent HRP Polymer antibody was used as the secondary antibody..



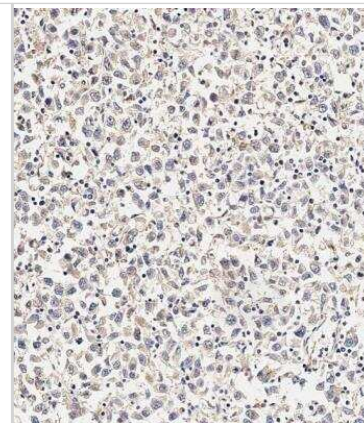
Flow Cytometry: SMPD1 Antibody [NBP2-22365] - Indirect Flow Cytometric analysis of K562 cells (right histogram) using SMPD1 antibody compared to a negative control cell (left histogram). FITC-conjugated goat-anti-rabbit secondary antibodies were used for the analysis.



Western Blot: SMPD1 Antibody [NBP2-22365] - Lane 1: human cerebellum lysate Lane 2: HepG2 whole cell lysate Lane 3: K562 whole cell lysate Lane 4: MCF-7 whole cell lysate Lysates/proteins at 20ug/lane. Secondary: IgG, (H+L) (HRP) goat anti-rabbit (1:10,000). Predicted band size: 70kD |Blocking/Dilution buffer: 5% NFDm/TBST.



Immunohistochemistry-Paraffin: SMPD1 Antibody [NBP2-22365] - Immunohistochemistry analysis of formalin fixed paraffin embedded human testis tissue using SMPD1 antibody (1:500) after HIER using EDTA buffer pH9.0 prior to staining performed on the Leica(R) BOND RXm. An undiluted biotinylated CRF Anti-Polyvalent HRP Polymer antibody was used as the secondary antibody





Novus Biologicals USA

10730 E. Briarwood Avenue
Centennial, CO 80112
USA
Phone: 303.730.1950
Toll Free: 1.888.506.6887
Fax: 303.730.1966
nb-customerservice@bio-techne.com

Bio-Techne Canada

21 Canmotor Ave
Toronto, ON M8Z 4E6
Canada
Phone: 905.827.6400
Toll Free: 855.668.8722
Fax: 905.827.6402
canada.inquires@bio-techne.com

Bio-Techne Ltd

19 Barton Lane
Abingdon Science Park
Abingdon, OX14 3NB, United Kingdom
Phone: (44) (0) 1235 529449
Free Phone: 0800 37 34 15
Fax: (44) (0) 1235 533420
info.EMEA@bio-techne.com

General Contact Information

www.novusbio.com
Technical Support: nb-technical@bio-techne.com
Orders: nb-customerservice@bio-techne.com
General: novus@novusbio.com

Products Related to NBP2-22365-100uL

HAF008	Goat anti-Rabbit IgG Secondary Antibody [HRP]
NB7160	Goat anti-Rabbit IgG (H+L) Secondary Antibody [HRP]
NBP2-24891	Rabbit IgG Isotype Control
210-TA-005	TNF-alpha [Unconjugated]

Limitations

This product is for research use only and is not approved for use in humans or in clinical diagnosis. Primary Antibodies are guaranteed for 1 year from date of receipt.

For more information on our 100% guarantee, please visit www.novusbio.com/guarantee

Earn gift cards/discounts by submitting a review: www.novusbio.com/reviews/submit/NBP2-22365

Earn gift cards/discounts by submitting a publication using this product:
www.novusbio.com/publications

