

# Product Datasheet

## Integrin beta 1/CD29 Antibody (3B6) - BSA Free NBP2-22191

Unit Size: 0.1 ml

Store at 4C short term. Aliquot and store at -20C long term. Avoid freeze-thaw cycles.

[www.novusbio.com](http://www.novusbio.com)



[technical@novusbio.com](mailto:technical@novusbio.com)

Reviews: 1 Publications: 2

Protocols, Publications, Related Products, Reviews, Research Tools and Images at:  
[www.novusbio.com/NBP2-22191](http://www.novusbio.com/NBP2-22191)

Updated 10/23/2024 v.20.1

Earn rewards for product  
reviews and publications.

Submit a publication at [www.novusbio.com/publications](http://www.novusbio.com/publications)

Submit a review at [www.novusbio.com/reviews/destination/NBP2-22191](http://www.novusbio.com/reviews/destination/NBP2-22191)



**NBP2-22191**

Integrin beta 1/CD29 Antibody (3B6) - BSA Free

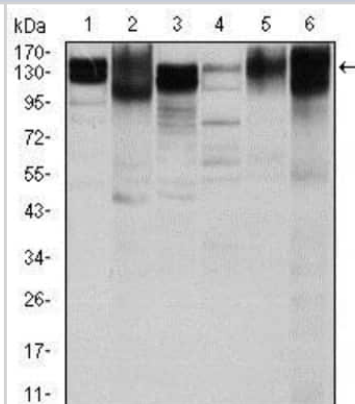
Product Information	
Unit Size	0.1 ml
Concentration	1 mg/ml
Storage	Store at 4C short term. Aliquot and store at -20C long term. Avoid freeze-thaw cycles.
Clonality	Monoclonal
Clone	3B6
Preservative	0.05% Sodium Azide
Isotype	IgG1
Purity	Protein G purified
Buffer	PBS
Target Molecular Weight	88.4 kDa

Product Description	
Host	Mouse
Gene ID	3688
Gene Symbol	ITGB1
Species	Human, Porcine, Monkey, Primate
Reactivity Notes	Reacts with Human and Monkey. Use in Porcine reported in scientific literature (PMID:32211117).
Marker	Stem Cell Marker
Immunogen	Purified recombinant fragment of human Integrin beta 1/CD29 expressed in E. Coli.

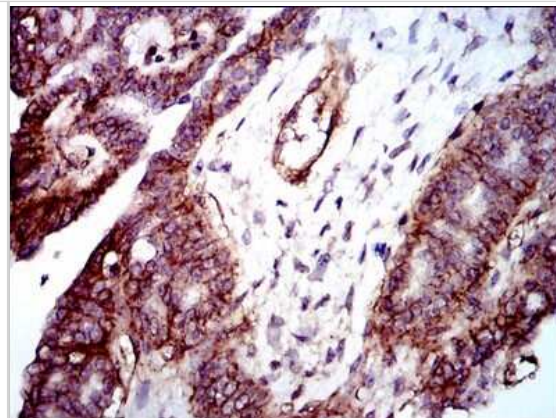
Product Application Details	
Applications	Western Blot, ELISA, Flow Cytometry, Immunohistochemistry, Immunohistochemistry-Paraffin, CyTOF-ready
Recommended Dilutions	Western Blot 1:500-1:2000, Flow Cytometry 1:200-1:400, ELISA 1:10000, Immunohistochemistry 1:10-1:500, Immunohistochemistry-Paraffin 1:200-1:1000, CyTOF-ready
Application Notes	This antibody is Cytof ready.

**Images**

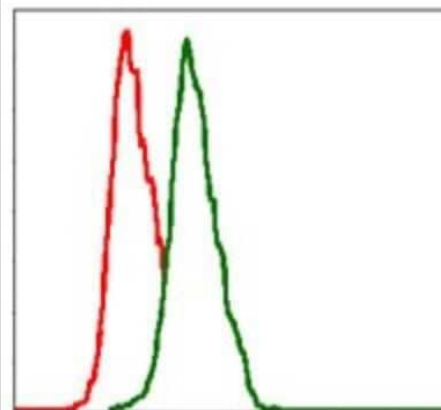
Western Blot: Integrin beta 1/CD29 Antibody (3B6) [NBP2-22191] - Western blot analysis using Integrin beta 1 mouse mAb against HeLa (1), HepG2 (2), A549 (3), Jurkat(4), L1210 (5) and Cos7 (6) cell lysate.



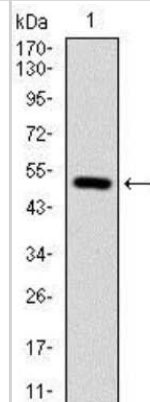
**Immunohistochemistry-Paraffin: Integrin beta 1/CD29 Antibody (3B6) [NBP2-22191]** - Immunohistochemical analysis of paraffin-embedded ovarian cancer tissues using Integrin beta 1 mouse mAb with DAB staining.



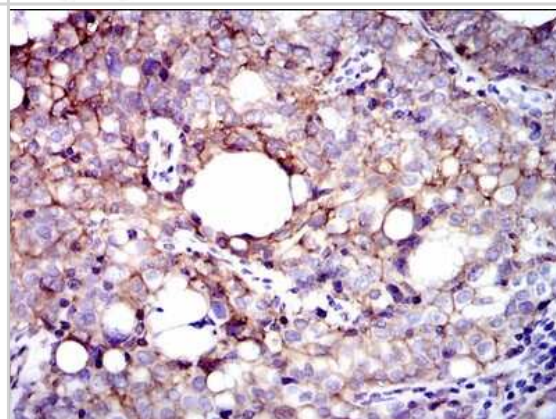
**Flow Cytometry: Integrin beta 1/CD29 Antibody (3B6) [NBP2-22191]** - Flow cytometric analysis of HeLa cells using Integrin beta 1 mouse mAb (green) and negative control (red).



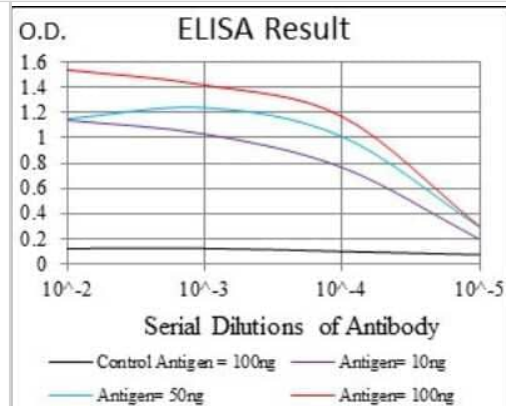
**Western Blot: Integrin beta 1/CD29 Antibody (3B6) [NBP2-22191]** - Western blot analysis using Integrin beta 1 mAb against human ITGB1 (AA: 50-270) recombinant protein. (Expected MW is 50.6 kDa)



**Immunohistochemistry-Paraffin: Integrin beta 1/CD29 Antibody (3B6) [NBP2-22191]** - Immunohistochemical analysis of paraffin-embedded cervical cancer tissues using Integrin beta 1 mouse mAb with DAB staining.



ELISA: Integrin beta 1/CD29 Antibody (3B6) [NBP2-22191] - Red:  
Control Antigen (100ng); Purple: Antigen (10ng); Green: Antigen (50ng);  
Blue: Antigen (100ng)



CyTOF-ready: Integrin beta 1/CD29 Antibody (3B6) [NBP2-22191] -  
Analysis of Integrin beta 1/CD29 antibody on human tissue. Integrin beta  
1/CD29 (green). Scale, 50um. Image from verified customer review.



## Publications

Radnaa E, Richardson L, Goldman B Et al. Stress signaler p38 mitogen-activated kinase activation: a cause for concern? Clin Sci (Lond) 2022-10-17 [PMID: 36250628] (CyTOF-ready, Human)

### Details:

Citation using the Azide and BSA Free version of this antibody.

Li X, Acott Ts, Nagy Ji, Kelley Mj ZO-1 associates with alpha 3 integrin and connexin43 in trabecular meshwork and Schlemm's canal cells Int J Physiol Pathophysiol Pharmacol 2020-02-25 [PMID: 32211117] (Porcine)



### **Novus Biologicals USA**

10730 E. Briarwood Avenue  
Centennial, CO 80112  
USA  
Phone: 303.730.1950  
Toll Free: 1.888.506.6887  
Fax: 303.730.1966  
nb-customerservice@bio-techne.com

### **Bio-Techne Canada**

21 Canmotor Ave  
Toronto, ON M8Z 4E6  
Canada  
Phone: 905.827.6400  
Toll Free: 855.668.8722  
Fax: 905.827.6402  
canada.inquires@bio-techne.com

### **Bio-Techne Ltd**

19 Barton Lane  
Abingdon Science Park  
Abingdon, OX14 3NB, United Kingdom  
Phone: (44) (0) 1235 529449  
Free Phone: 0800 37 34 15  
Fax: (44) (0) 1235 533420  
info.EMEA@bio-techne.com

### **General Contact Information**

www.novusbio.com  
Technical Support: nb-technical@bio-techne.com  
Orders: nb-customerservice@bio-techne.com  
General: novus@novusbio.com

### **Products Related to NBP2-22191**

---

HAF007	Goat anti-Mouse IgG Secondary Antibody [HRP]
NB720-B	Rabbit anti-Mouse IgG (H+L) Secondary Antibody [Biotin]
NBP1-97005-0.5mg	Mouse IgG1 Isotype Control (MG1)
NBP2-59570-50ug	Recombinant Human Integrin beta 1/CD29 His Protein

---

### **Limitations**

This product is for research use only and is not approved for use in humans or in clinical diagnosis. Primary Antibodies are guaranteed for 1 year from date of receipt.

For more information on our 100% guarantee, please visit [www.novusbio.com/guarantee](http://www.novusbio.com/guarantee)

Earn gift cards/discounts by submitting a review: [www.novusbio.com/reviews/submit/NBP2-22191](http://www.novusbio.com/reviews/submit/NBP2-22191)

Earn gift cards/discounts by submitting a publication using this product:  
[www.novusbio.com/publications](http://www.novusbio.com/publications)

