

Product Datasheet

Glucose 6 Phosphate Dehydrogenase Antibody (2H7) [PE] NBP2-22125PE

Unit Size: 0.1 ml

Store at 4C in the dark.

www.novusbio.com



technical@novusbio.com

Protocols, Publications, Related Products, Reviews, Research Tools and Images at:
www.novusbio.com/NBP2-22125PE

Updated 10/23/2024 v.20.1

Earn rewards for product
reviews and publications.

Submit a publication at www.novusbio.com/publications

Submit a review at www.novusbio.com/reviews/destination/NBP2-22125PE



NBP2-22125PE**Glucose 6 Phosphate Dehydrogenase Antibody (2H7) [PE]**

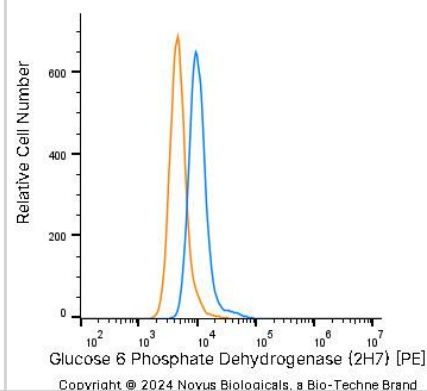
Product Information	
Unit Size	0.1 ml
Concentration	Please see the vial label for concentration. If unlisted please contact technical services.
Storage	Store at 4C in the dark.
Clonality	Monoclonal
Clone	2H7
Preservative	0.05% Sodium Azide
Isotype	IgG1
Conjugate	PE
Purity	Ammonium sulfate precipitation
Buffer	PBS

Product Description	
Host	Mouse
Gene ID	2539
Gene Symbol	G6PD
Species	Human
Marker	Cytosol Marker
Immunogen	Purified recombinant fragment of human Glucose 6 Phosphate Dehydrogenase expressed in E. coli. [Uniprot: P11413]

Product Application Details	
Applications	Western Blot, ELISA, Flow Cytometry, Immunohistochemistry, Immunohistochemistry-Paraffin
Recommended Dilutions	Western Blot, Flow Cytometry, ELISA, Immunohistochemistry, Immunohistochemistry-Paraffin
Application Notes	Optimal dilution of this antibody should be experimentally determined.

Images

A431 human skin carcinoma cell line was stained with Mouse anti-Glucose 6 Phosphate Dehydrogenase Protein-G purified Monoclonal Antibody conjugated to Phycoerythrin (Catalog # NBP2-22125PE, blue histogram) or matched control antibody (Catalog # NBP2-27231PE, orange histogram).





Novus Biologicals USA

10730 E. Briarwood Avenue
Centennial, CO 80112
USA
Phone: 303.730.1950
Toll Free: 1.888.506.6887
Fax: 303.730.1966
nb-customerservice@bio-techne.com

Bio-Techne Canada

21 Canmotor Ave
Toronto, ON M8Z 4E6
Canada
Phone: 905.827.6400
Toll Free: 855.668.8722
Fax: 905.827.6402
canada.inquires@bio-techne.com

Bio-Techne Ltd

19 Barton Lane
Abingdon Science Park
Abingdon, OX14 3NB, United Kingdom
Phone: (44) (0) 1235 529449
Free Phone: 0800 37 34 15
Fax: (44) (0) 1235 533420
info.EMEA@bio-techne.com

General Contact Information

www.novusbio.com
Technical Support: nb-technical@bio-techne.com
Orders: nb-customerservice@bio-techne.com
General: novus@novusbio.com

Products Related to NBP2-22125PE

NBP1-97005PE	Mouse IgG1 Isotype Control (MG1) [PE]
NBC1-19064	Recombinant E. coli Glucose 6 Phosphate Dehydrogenase Protein
10096-DH-050	Glucose 6 Phosphate Dehydrogenase [Unconjugated]
NB300-221	GAPDH Antibody (1D4)

Limitations

This product is for research use only and is not approved for use in humans or in clinical diagnosis. Primary Antibodies are guaranteed for 1 year from date of receipt.

For more information on our 100% guarantee, please visit www.novusbio.com/guarantee

Earn gift cards/discounts by submitting a review: www.novusbio.com/reviews/submit/NBP2-22125PE

Earn gift cards/discounts by submitting a publication using this product:
www.novusbio.com/publications

