

# Product Datasheet

## Rat IgG2a Isotype Control (2A3) NBP2-21947-0.1mg

Unit Size: 0.1 mg

Aliquot and store at -20C or -80C. Avoid freeze-thaw cycles.

[www.novusbio.com](http://www.novusbio.com)



[technical@novusbio.com](mailto:technical@novusbio.com)

Protocols, Publications, Related Products, Reviews, Research Tools and Images at:  
[www.novusbio.com/NBP2-21947](http://www.novusbio.com/NBP2-21947)

Updated 10/23/2024 v.20.1

Earn rewards for product  
reviews and publications.

Submit a publication at [www.novusbio.com/publications](http://www.novusbio.com/publications)

Submit a review at [www.novusbio.com/reviews/destination/NBP2-21947](http://www.novusbio.com/reviews/destination/NBP2-21947)



**NBP2-21947-0.1mg**

Rat IgG2a Isotype Control (2A3)

<b>Product Information</b>	
<b>Unit Size</b>	0.1 mg
<b>Concentration</b>	LYOPH mg/ml
<b>Storage</b>	Aliquot and store at -20C or -80C. Avoid freeze-thaw cycles.
<b>Clonality</b>	Monoclonal
<b>Clone</b>	2A3
<b>Preservative</b>	No Preservative
<b>Reconstitution Instructions</b>	Reconstitute with PBS.
<b>Isotype</b>	IgG2a
<b>Purity</b>	Protein A or G purified
<b>Buffer</b>	PBS

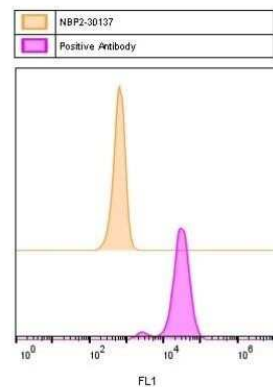
<b>Product Description</b>	
<b>Description</b>	This Rat IgG2A (2A3) immunoglobulin is useful as an isotype control for Rat IgG2A (2A3) antibody. This antibody is purified from culture supernatant of a hybridoma (Mouse myeloma fused with spleen cells from a Rat, clone 2A3) with protein A/G.
<b>Host</b>	Rat
<b>Species</b>	Rat

<b>Product Application Details</b>	
<b>Applications</b>	Flow Cytometry
<b>Recommended Dilutions</b>	Flow Cytometry
<b>Application Notes</b>	Use the isotype control at the same concentration as the experimental antibody. Optimal dilution of this antibody should be experimentally determined.

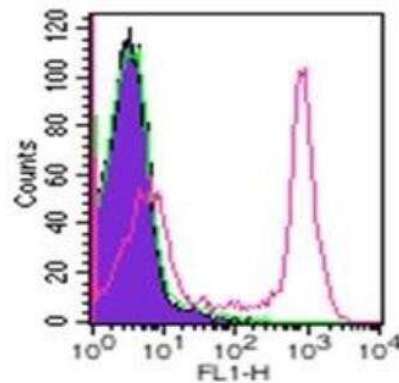


## Images

Flow Cytometry: Rat IgG2a Isotype Control (2A3) [NBP2-21947] - Flow Cytometry: Rat IgG2a Isotype Control (2A3) [Alexa Fluor® 488] [NBP2-30137] - This image was submitted via customer review. Image using the Alexa Fluor 488 form of this antibody.



Flow Cytometry: Rat IgG2a Isotype Control (2A3) [NBP2-21947] - Flow analysis of CD45R in  $10^6$  mouse splenocytes using 0.25 ug of this antibody. The shaded histogram represents mouse splenocytes alone; green represents rat isotype control (20211AF488); red represents this antibody.





### **Novus Biologicals USA**

10730 E. Briarwood Avenue  
Centennial, CO 80112  
USA  
Phone: 303.730.1950  
Toll Free: 1.888.506.6887  
Fax: 303.730.1966  
nb-customerservice@bio-techne.com

### **Bio-Techne Canada**

21 Canmotor Ave  
Toronto, ON M8Z 4E6  
Canada  
Phone: 905.827.6400  
Toll Free: 855.668.8722  
Fax: 905.827.6402  
canada.inquires@bio-techne.com

### **Bio-Techne Ltd**

19 Barton Lane  
Abingdon Science Park  
Abingdon, OX14 3NB, United Kingdom  
Phone: (44) (0) 1235 529449  
Free Phone: 0800 37 34 15  
Fax: (44) (0) 1235 533420  
info.EMEA@bio-techne.com

### **General Contact Information**

www.novusbio.com  
Technical Support: nb-technical@bio-techne.com  
Orders: nb-customerservice@bio-techne.com  
General: novus@novusbio.com

### **Products Related to NBP2-21947-0.1mg**

---

F0129	Rat anti-Mouse IgG2a Secondary Antibody (344701) [Phycoerythrin]
-------	--

---

#### **Limitations**

This product is for research use only and is not approved for use in humans or in clinical diagnosis. Isotype Controls are guaranteed for 1 year from date of receipt.

For more information on our 100% guarantee, please visit [www.novusbio.com/guarantee](http://www.novusbio.com/guarantee)

Earn gift cards/discounts by submitting a review: [www.novusbio.com/reviews/submit/NBP2-21947](http://www.novusbio.com/reviews/submit/NBP2-21947)

Earn gift cards/discounts by submitting a publication using this product:  
[www.novusbio.com/publications](http://www.novusbio.com/publications)

