

Product Datasheet

GEF-H1 Antibody - BSA Free

NBP2-21577

Unit Size: 0.1 ml

Aliquot and store at -20C or -80C. Avoid freeze-thaw cycles.

www.novusbio.com



technical@novusbio.com

Protocols, Publications, Related Products, Reviews, Research Tools and Images at:
www.novusbio.com/NBP2-21577

Updated 2/23/2025 v.20.1

Earn rewards for product
reviews and publications.

Submit a publication at www.novusbio.com/publications

Submit a review at www.novusbio.com/reviews/destination/NBP2-21577



NBP2-21577

GEF-H1 Antibody - BSA Free

Product Information

Unit Size	0.1 ml
Concentration	Concentrations vary lot to lot. See vial label for concentration. If unlisted please contact technical services.
Storage	Aliquot and store at -20C or -80C. Avoid freeze-thaw cycles.
Clonality	Polyclonal
Preservative	0.025% Proclin 300
Isotype	IgG
Purity	Antigen Affinity-purified
Buffer	PBS (pH 7), 20% Glycerol
Target Molecular Weight	112 kDa

Product Description

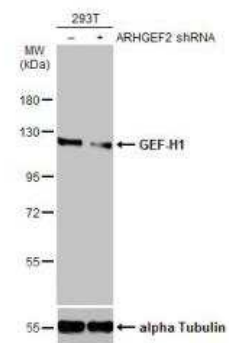
Host	Rabbit
Gene ID	9181
Gene Symbol	ARHGEF2
Species	Human, Mouse, Rat
Immunogen	Recombinant protein encompassing a sequence within the C-terminus region of human GEF-H1. The exact sequence is proprietary.

Product Application Details

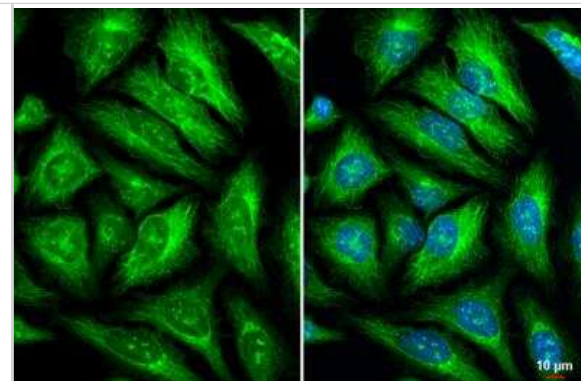
Applications	Western Blot, Immunocytochemistry/ Immunofluorescence, Immunohistochemistry, Immunohistochemistry-Frozen, Immunohistochemistry-Paraffin, Immunoprecipitation, Knockdown Validated
Recommended Dilutions	Western Blot 1:500-1:3000, Immunohistochemistry 1:100-1:1000, Immunocytochemistry/ Immunofluorescence 1:100-1:1000, Immunoprecipitation 1:100-1:500, Immunohistochemistry-Paraffin 1:100-1:1000, Immunohistochemistry-Frozen 1:100-1:1000, Knockdown Validated

Images

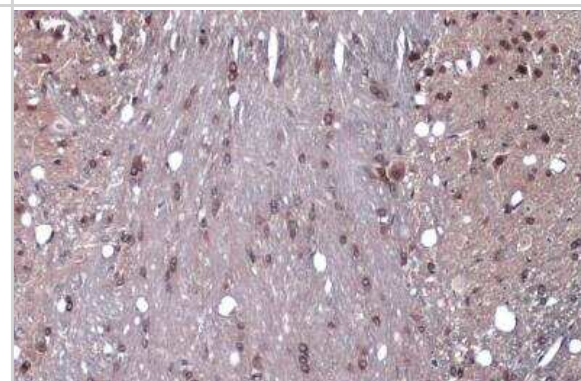
Western Blot: GEF-H1 Antibody [NBP2-21577] - Non-transfected (-) and transfected (+) 293T whole cell extracts (30 ug) were separated by 7.5% SDS-PAGE, and the membrane was blotted with GEF-H1 antibody diluted at 1:4000. HRP-conjugated anti-rabbit IgG antibody was used to detect the primary antibody.



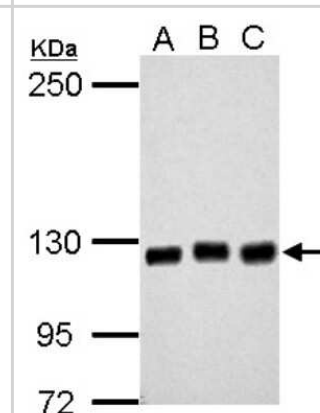
Immunocytochemistry/Immunofluorescence: GEF-H1 Antibody [NBP2-21577] - GEF-H1 antibody detects GEF-H1 protein at cytoskeleton and Golgi apparatus by immunofluorescent analysis. Sample: HeLa cells were fixed in ice-cold MeOH for 5 min. Green: GEF-H1 stained by GEF-H1 antibody diluted at 1:500. Blue: Hoechst 33342 staining. Scale bar= 10 μ m.



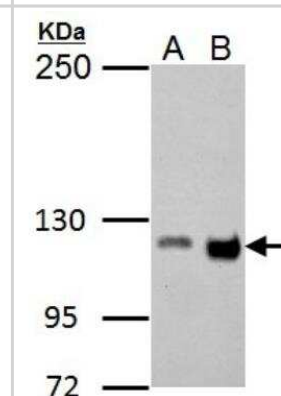
Immunohistochemistry-Paraffin: GEF-H1 Antibody [NBP2-21577] - GEF-H1 antibody detects GEF-H1 protein at cytoplasm by immunohistochemical analysis. Sample: Paraffin-embedded mouse brain. GEF-H1 stained by GEF-H1 antibody diluted at 1:1000. Antigen Retrieval: Citrate buffer, pH 6.0, 15 min.



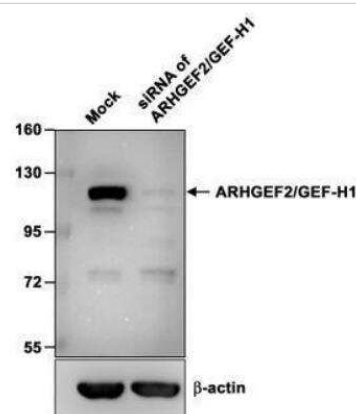
Western Blot: GEF-H1 Antibody [NBP2-21577] - Sample (30 μ g of whole cell lysate) A: 293T B: A431 C: HeLa 5% SDS PAGE gel, diluted at 1:2000.



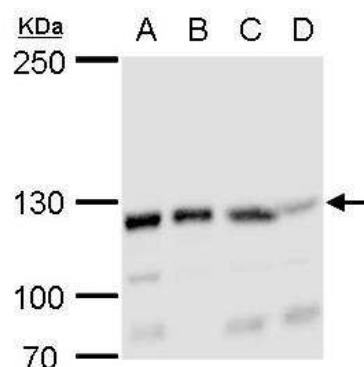
Western Blot: GEF-H1 Antibody [NBP2-21577] - A. 30 μ g Raw264. 7 whole cell lysate/extract B. 30 μ g C2C12 whole cell lysate/extract 5 % SDS-PAGE GEF-H1 antibody dilution: 1:1000. (Mouse)



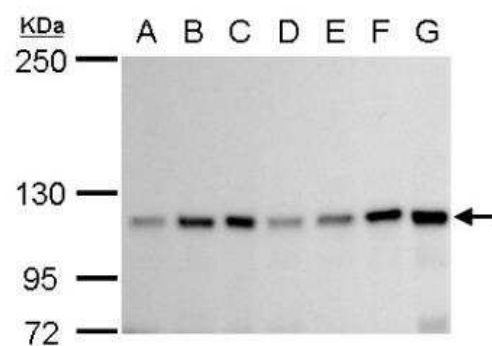
Western Blot: GEF-H1 Antibody [NBP2-21577] - Sample (10 ug of whole cell lysate) A: hMSC-3A6 B: siRNA of ARHGEF2/GEF-H1 8% SDS PAGE diluted at 1:1000. The HRP-conjugated anti-rabbit IgG antibody (NBP2-19301) was used to detect the primary antibody.



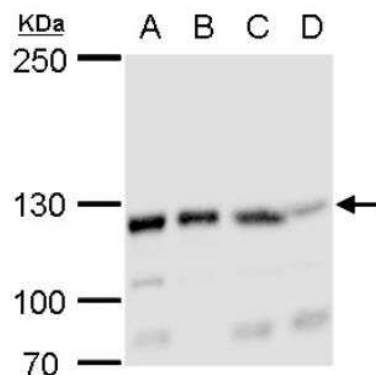
Western Blot: GEF-H1 Antibody [NBP2-21577] - A. 30 ug 293T whole cell lysate/extract B. 30 ug A431 whole cell lysate/extract C. 30 ug HeLa whole cell lysate/extract D. 30 ug HepG2 whole cell lysate/extract 5% SDS-PAGE GEF-H1 antibody dilution: 1:2000. The HRP-conjugated anti-rabbit IgG antibody (NBP2-19301) was used to detect the primary antibody.



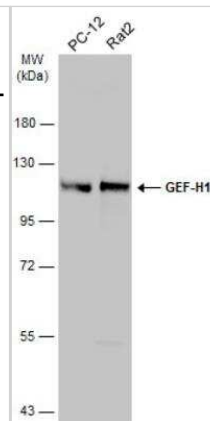
Western Blot: GEF-H1 Antibody [NBP2-21577] - A. 30 ug Neuro2A whole cell lysate/extract B. 30 ug GL261 whole cell lysate/extract C. 30 ug C8D30 whole cell lysate/extract D. 30 ug NIH-3T3 whole cell lysate/extract E. 30 ug BCL-1 whole cell lysate/extract F. 30 ug Raw 264.7 whole cell lysate/extract G. 30 ug C2C12 whole cell lysate/extract 5% SDS-PAGE GEF-H1 antibody dilution: 1:1000. The HRP-conjugated anti-rabbit IgG antibody (NBP2-19301) was used to detect the primary antibody.



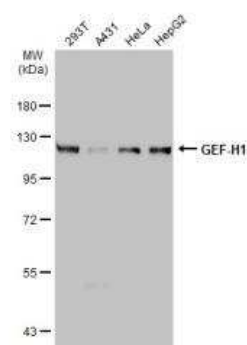
Western Blot: GEF-H1 Antibody [NBP2-21577] - A. 30 ug 293T whole cell lysate/extract B. 30 ug A431 whole cell lysate/extract C. 30 ug HeLa whole cell lysate/extract D. 30 ug HepG2 whole cell lysate/extract 5% SDS-PAGE GEF-H1 antibody dilution: 1:2000 The HRP-conjugated anti-rabbit IgG antibody (NBP2-19301) was used to detect the primary antibody.



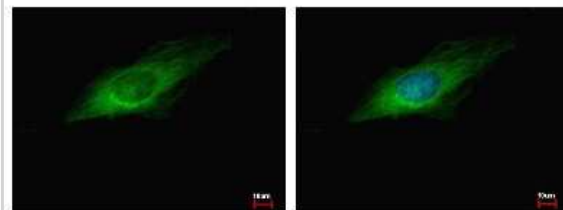
Western Blot: GEF-H1 Antibody [NBP2-21577] - Various whole cell extracts (30 ug) were separated by 7.5% SDS-PAGE, and the membrane was blotted with GEF-H1 antibody diluted at 1:500. The HRP-conjugated anti-rabbit IgG antibody (NBP2-19301) was used to detect the primary antibody.



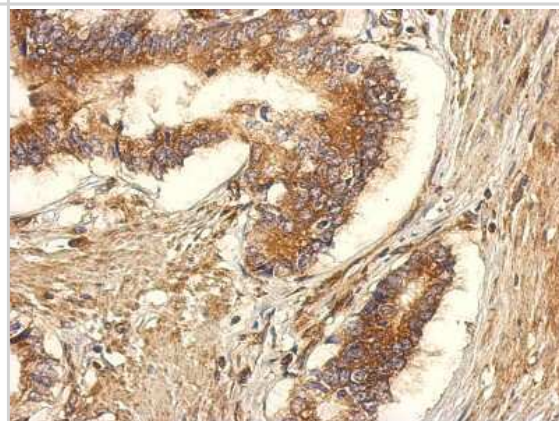
Western Blot: GEF-H1 Antibody [NBP2-21577] - Various whole cell extracts (30 ug) were separated by 7.5% SDS-PAGE, and the membrane was blotted with GEF-H1 antibody diluted at 1:2000. HRP-conjugated anti-rabbit IgG antibody was used to detect the primary antibody.



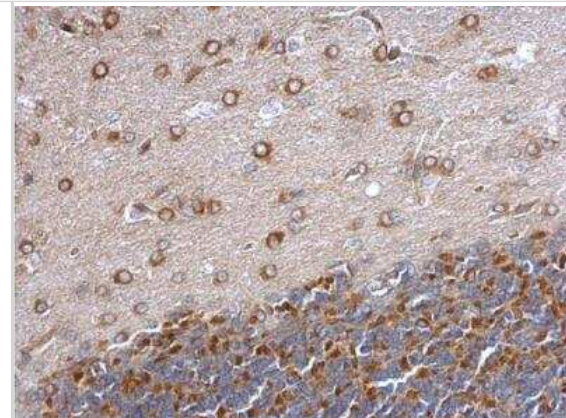
Immunocytochemistry/Immunofluorescence: GEF-H1 Antibody [NBP2-21577] - HeLa cells were fixed in -20C 100% MeOH for 5 min. Green: ARHGEF2 protein stained by GEF-H1 antibody diluted at 1:500. Blue: Hoechst 33343 staining.



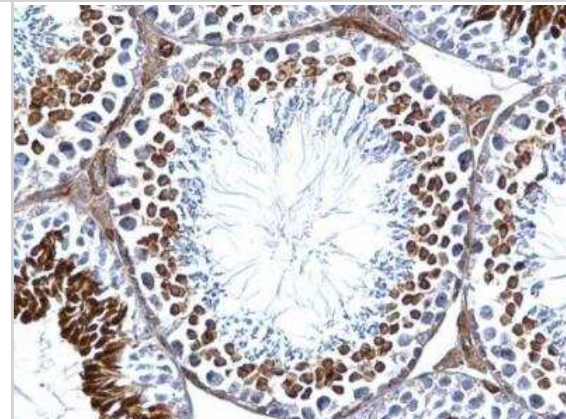
Immunohistochemistry-Paraffin: GEF-H1 Antibody [NBP2-21577] - Immunohistochemical analysis of paraffin-embedded Gastric ca, using antibody at 1:500 dilution.



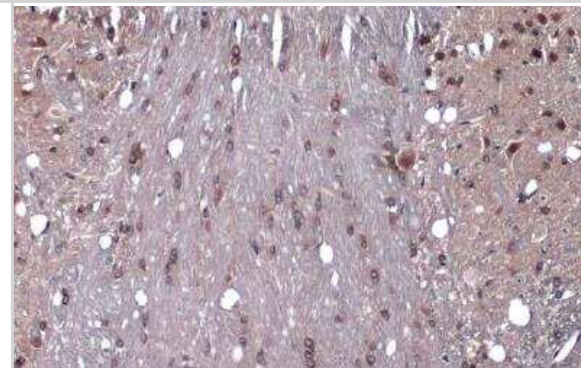
Immunohistochemistry-Paraffin: GEF-H1 Antibody [NBP2-21577] - Paraffin-embedded rat hind brain. GEF-H1 antibody dilution: 1:500.



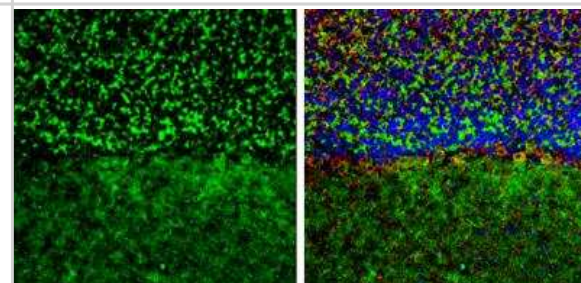
Immunohistochemistry-Paraffin: GEF-H1 Antibody [NBP2-21577] - Paraffin-embedded mouse testis. GEF-H1 antibody dilution: 1:500.



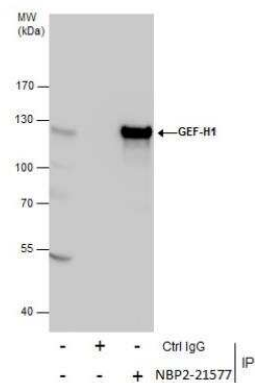
Immunohistochemistry-Paraffin: GEF-H1 Antibody [NBP2-21577] - mouse brain. GEF-H1 stained by GEF-H1 antibody diluted at 1:1000. Antigen Retrieval: Citrate buffer, pH 6.0, 15 min



Immunohistochemistry-Frozen: GEF-H1 Antibody [NBP2-21577] - Frozen-sectioned mouse mouse cerebellum. Green: GEF-H1 stained by GEF-H1 antibody diluted at 1:250. Red: NF-H, stained by NF-H antibody [114] diluted at 1:500. Blue: Fluoroshield with DAPI. Antigen Retrieval: Citrate buffer, pH 6.0, 10 min.



Immunoprecipitation: GEF-H1 Antibody [NBP2-21577] -
 Immunoprecipitation of GEF-H1 protein from 293T whole cell extracts using 5 ug of GEF-H1 antibody. Western blot analysis was performed using GEF-H1 antibody. EasyBlot anti-Rabbit IgG was used as a secondary reagent.





Novus Biologicals USA

10730 E. Briarwood Avenue
Centennial, CO 80112
USA
Phone: 303.730.1950
Toll Free: 1.888.506.6887
Fax: 303.730.1966
nb-customerservice@bio-techne.com

Bio-Techne Canada

21 Canmotor Ave
Toronto, ON M8Z 4E6
Canada
Phone: 905.827.6400
Toll Free: 855.668.8722
Fax: 905.827.6402
canada.inquires@bio-techne.com

Bio-Techne Ltd

19 Barton Lane
Abingdon Science Park
Abingdon, OX14 3NB, United Kingdom
Phone: (44) (0) 1235 529449
Free Phone: 0800 37 34 15
Fax: (44) (0) 1235 533420
info.EMEA@bio-techne.com

General Contact Information

www.novusbio.com
Technical Support: nb-technical@bio-techne.com
Orders: nb-customerservice@bio-techne.com
General: novus@novusbio.com

Products Related to NBP2-21577

HAF008	Goat anti-Rabbit IgG Secondary Antibody [HRP]
NB7160	Goat anti-Rabbit IgG (H+L) Secondary Antibody [HRP]
NBP2-24891	Rabbit IgG Isotype Control
NBP2-58647PEP	GEF-H1 Recombinant Protein Antigen

Limitations

This product is for research use only and is not approved for use in humans or in clinical diagnosis. Primary Antibodies are guaranteed for 1 year from date of receipt.

For more information on our 100% guarantee, please visit www.novusbio.com/guarantee

Earn gift cards/discounts by submitting a review: www.novusbio.com/reviews/submit/NBP2-21577

Earn gift cards/discounts by submitting a publication using this product:
www.novusbio.com/publications

