

Product Datasheet

Cytochrome c Antibody

NBP2-21569

Unit Size: 0.1 ml

Aliquot and store at -20C or -80C. Avoid freeze-thaw cycles.

www.novusbio.com



technical@novusbio.com

Publications: 3

Protocols, Publications, Related Products, Reviews, Research Tools and Images at:
www.novusbio.com/NBP2-21569

Updated 10/23/2024 v.20.1

Earn rewards for product
reviews and publications.

Submit a publication at www.novusbio.com/publications

Submit a review at www.novusbio.com/reviews/destination/NBP2-21569



NBP2-21569

Cytochrome c Antibody

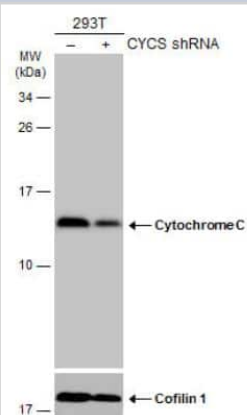
Product Information	
Unit Size	0.1 ml
Concentration	Concentrations vary lot to lot. See vial label for concentration. If unlisted please contact technical services.
Storage	Aliquot and store at -20C or -80C. Avoid freeze-thaw cycles.
Clonality	Polyclonal
Preservative	0.025% Proclin 300
Isotype	IgG
Purity	Antigen Affinity-purified
Buffer	PBS, 20% Glycerol, 1% BSA
Target Molecular Weight	12 kDa

Product Description	
Host	Rabbit
Gene ID	54205
Gene Symbol	CYCS
Species	Human, Mouse, Rat, Canine, Drosophila
Reactivity Notes	Chicken (87%), Xenopus laevis (84%).
Marker	Mitochondria Marker
Immunogen	Full length human Cytochrome c Recombinant protein.

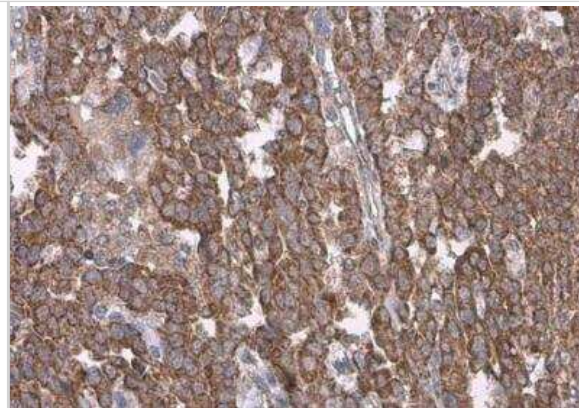
Product Application Details	
Applications	Western Blot, Simple Western, Immunohistochemistry, Immunohistochemistry-Frozen, Immunohistochemistry-Paraffin
Recommended Dilutions	Western Blot 1:500-1:3000, Simple Western Validated from a verified customer review, Immunohistochemistry 1:100-1:1000, Immunohistochemistry-Paraffin 1:100-1:1000, Immunohistochemistry-Frozen Assay dependent

Images

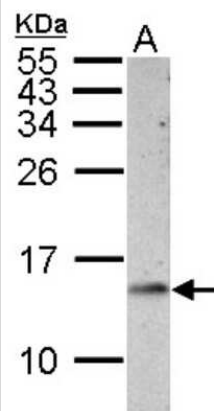
Western Blot: Cytochrome c Antibody [NBP2-21569] - Non-transfected (-) and transfected (+) 293T whole cell extracts (30 ug) were separated by 15% SDS-PAGE, and the membrane was blotted with Cytochrome C antibody diluted at 1:1000. HRP-conjugated anti-rabbit IgG antibody was used to detect the primary antibody.



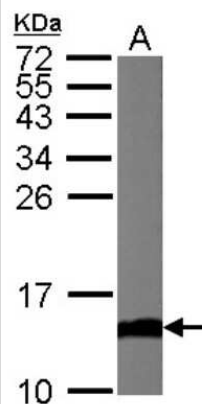
Immunohistochemistry-Paraffin: Cytochrome c Antibody [NBP2-21569] - Human endometrial carcinoma. Cytochrome C stained by Cytochrome C antibody diluted at 1:500. Antigen Retrieval: Citrate buffer, pH 6.0, 15 min.



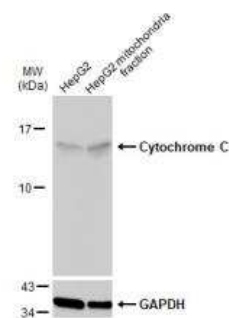
Western Blot: Cytochrome C Antibody [NBP2-21569] - Sample (30 ug of whole cell lysate) A: PC-12 15% SDS PAGE gel, diluted at 1:1000.



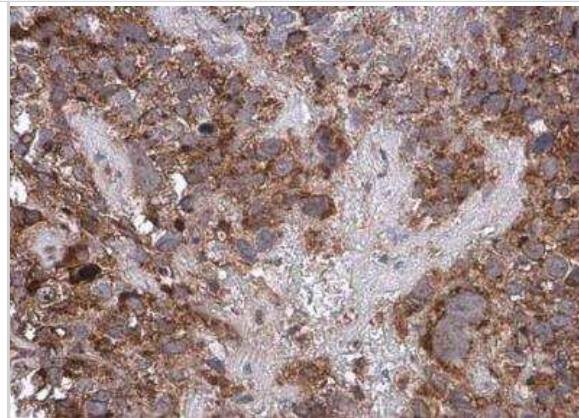
Western Blot: Cytochrome C Antibody [NBP2-21569] - Sample (50 ug of whole cell lysate) A: Mouse Brain, 15% SDS PAGE gel, diluted at 1:1000.



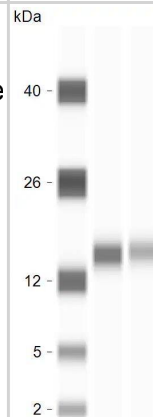
Western Blot: Cytochrome c Antibody [NBP2-21569] - HepG2 and mitochondria extracts (30 ug) were separated by SDS-PAGE, and the membrane was blotted with Cytochrome C antibody diluted at 1:2000. HRP-conjugated anti-rabbit IgG antibody was used to detect the primary antibody, and the signal was developed with Trident pico Western HRP Substrate.



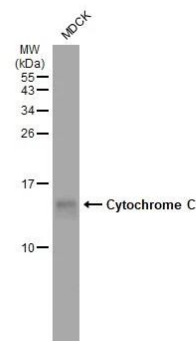
Immunohistochemistry-Paraffin: Cytochrome c Antibody [NBP2-21569] - Human cervical carcinoma. Cytochrome C stained by Cytochrome C antibody diluted at 1:500. Antigen Retrieval: Citrate buffer, pH 6.0, 15 min.



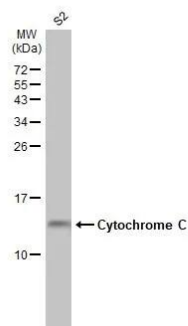
Simple Western: Cytochrome c Antibody [NBP2-21569] - Cytochrome C Antibodies (NBP2-21569), ProteinSimple Western Blot on Jess Instrument; 1 microgram of human brain tissue lysate was tested with the antibodies diluted 10 and 20 times. Image from verified customer review.



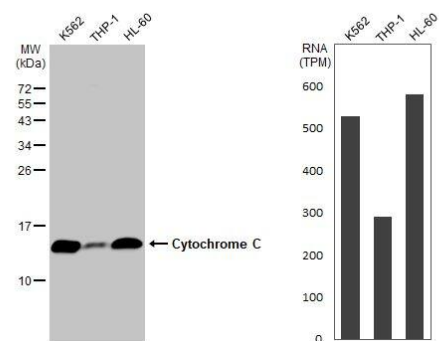
Western Blot: Cytochrome c Antibody [NBP2-21569] - Whole cell extract (30 ug) was separated by 15% SDS-PAGE, and the membrane was blotted with Cytochrome c antibody (NBP2-21569) diluted at 1:1000. The HRP-conjugated anti-rabbit IgG antibody was used to detect the primary antibody.



Western Blot: Cytochrome c Antibody [NBP2-21569] - Whole cell extract (30 ug) was separated by 15% SDS-PAGE, and the membrane was blotted with Cytochrome c antibody (NBP2-21569) diluted at 1:1000. The HRP-conjugated anti-rabbit IgG antibody was used to detect the primary antibody, and the signal was developed with Trident ECL plus-Enhanced.



Western Blot: Cytochrome c Antibody [NBP2-21569] - Various whole cell extracts (30 ug) were separated by 15% SDS-PAGE, and the membrane was blotted with Cytochrome C antibody diluted at 1:1000. The HRP-conjugated anti-rabbit IgG antibody was used to detect the primary antibody, and the signal was developed with Trident ECL plus-Enhanced. Corresponding RNA expression data for the same cell lines are based on Human Protein Atlas program.



Publications

Li J, Jaiswal MK, Chien JF et al. Divergent single cell transcriptome and epigenome alterations in ALS and FTD patients with C9orf72 mutation Nat Commun 2023-09-15 [PMID: 37714849] (Simple Western)

Schreiter T, Sowa JP, Schlattjan M et al. Human Ex-Vivo Liver Model for Acetaminophen-induced Liver Damage. Sci Rep. 2016-08-23 [PMID: 27550092] (IF/IHC, Human)

Wu SH, Chyau CC, Chen JH et al. Anti-cancerous effects of Wasabia japonica extract in Hep3B liver cancer cells via ROS accumulation, DNA damage and p73-mediated apoptosis Journal of Functional Foods 2015-03-02 (WB, Human)



Novus Biologicals USA

10730 E. Briarwood Avenue
Centennial, CO 80112
USA
Phone: 303.730.1950
Toll Free: 1.888.506.6887
Fax: 303.730.1966
nb-customerservice@bio-techne.com

Bio-Techne Canada

21 Canmotor Ave
Toronto, ON M8Z 4E6
Canada
Phone: 905.827.6400
Toll Free: 855.668.8722
Fax: 905.827.6402
canada.inquires@bio-techne.com

Bio-Techne Ltd

19 Barton Lane
Abingdon Science Park
Abingdon, OX14 3NB, United Kingdom
Phone: (44) (0) 1235 529449
Free Phone: 0800 37 34 15
Fax: (44) (0) 1235 533420
info.EMEA@bio-techne.com

General Contact Information

www.novusbio.com
Technical Support: nb-technical@bio-techne.com
Orders: nb-customerservice@bio-techne.com
General: novus@novusbio.com

Products Related to NBP2-21569

HAF008	Goat anti-Rabbit IgG Secondary Antibody [HRP]
NB7160	Goat anti-Rabbit IgG (H+L) Secondary Antibody [HRP]
NBP2-24891	Rabbit IgG Isotype Control
210-TA-005	TNF-alpha [Unconjugated]

Limitations

This product is for research use only and is not approved for use in humans or in clinical diagnosis. Primary Antibodies are guaranteed for 1 year from date of receipt.

For more information on our 100% guarantee, please visit www.novusbio.com/guarantee

Earn gift cards/discounts by submitting a review: www.novusbio.com/reviews/submit/NBP2-21569

Earn gift cards/discounts by submitting a publication using this product:
www.novusbio.com/publications

