

Product Datasheet

SOD1/Cu-Zn SOD Antibody

NBP2-20534

Unit Size: 0.1 ml

Aliquot and store at -20C or -80C. Avoid freeze-thaw cycles.

www.novusbio.com



technical@novusbio.com

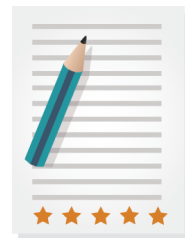
Protocols, Publications, Related Products, Reviews, Research Tools and Images at:
www.novusbio.com/NBP2-20534

Updated 10/23/2024 v.20.1

Earn rewards for product
reviews and publications.

Submit a publication at www.novusbio.com/publications

Submit a review at www.novusbio.com/reviews/destination/NBP2-20534



NBP2-20534**SOD1/Cu-Zn SOD Antibody**

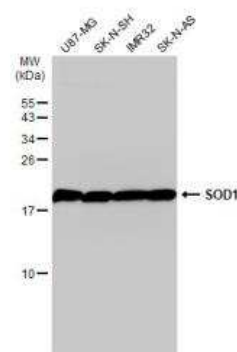
Product Information	
Unit Size	0.1 ml
Concentration	Concentrations vary lot to lot. See vial label for concentration. If unlisted please contact technical services.
Storage	Aliquot and store at -20C or -80C. Avoid freeze-thaw cycles.
Clonality	Polyclonal
Preservative	0.025% Proclin 300
Isotype	IgG
Purity	Antigen Affinity-purified
Buffer	PBS (pH 7), 20% Glycerol, 1% BSA
Target Molecular Weight	16 kDa

Product Description	
Host	Rabbit
Gene ID	6647
Gene Symbol	SOD1
Species	Human, Mouse, Rat, Alligator, Avian
Immunogen	Recombinant protein encompassing a sequence within the center region of human SOD1/Cu-Zn SOD. The exact sequence is proprietary.

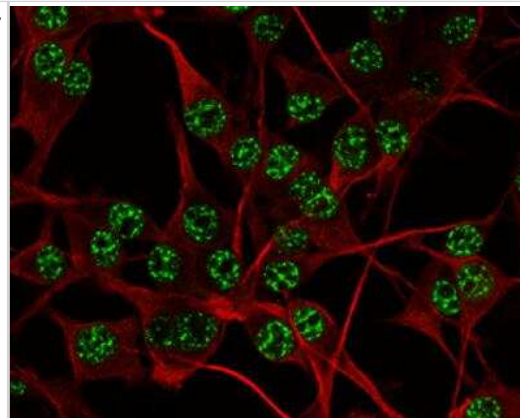
Product Application Details	
Applications	Western Blot, ELISA, Immunocytochemistry/ Immunofluorescence, Immunohistochemistry, Immunohistochemistry-Frozen, Immunohistochemistry-Paraffin, Sandwich ELISA, Knockout Validated
Recommended Dilutions	Western Blot 1:500-1:10000, ELISA 1:1000-1:10000, Immunohistochemistry 10 - 1:500, Immunocytochemistry/ Immunofluorescence 1:100-1:1000, Immunohistochemistry-Paraffin 1:100-1:1000, Immunohistochemistry-Frozen, Sandwich ELISA, Knockout Validated

Images

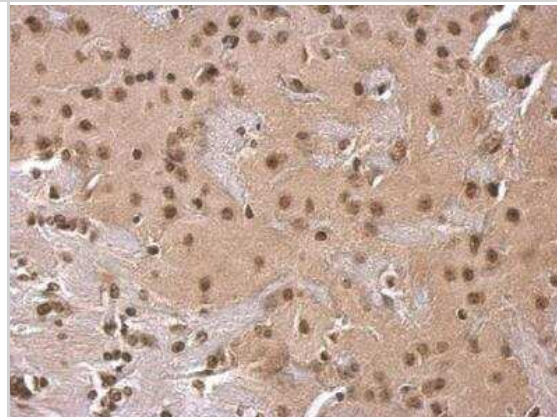
Western Blot: SOD1/Cu-Zn SOD Antibody [NBP2-20534] - Various whole cell extracts (30 ug) were separated by 15% SDS-PAGE, and the membrane was blotted with SOD1 antibody diluted at 1:1000. HRP-conjugated anti-rabbit IgG antibody was used to detect the primary antibody.



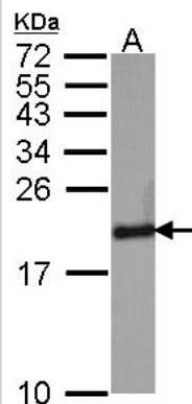
Immunocytochemistry/Immunofluorescence: SOD1/Cu-Zn SOD Antibody [NBP2-20534] - SOD1 antibody detects SOD1 protein at nucleus by immunofluorescent analysis. Sample: U-87 MG cells were fixed in 4% paraformaldehyde at RT for 15 min. Green: SOD1 protein stained by SOD1 antibody diluted at 1:500. Red: beta Tubulin 3/ TUJ1 protein stained by beta Tubulin 3/ TUJ1 antibody diluted at 1:200.



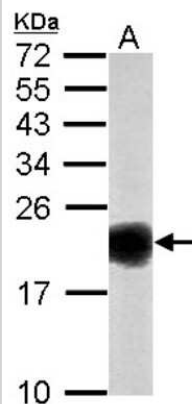
Immunohistochemistry-Paraffin: SOD1/Cu-Zn SOD Antibody [NBP2-20534] - SOD1 antibody detects SOD1 protein at cytosol on mouse fore brain by immunohistochemical analysis. Sample: Paraffin-embedded mouse fore brain. SOD1 antibody dilution: 1:500.



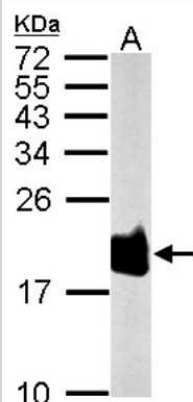
Western Blot: Superoxide Dismutase 1 Antibody [NBP2-20534] - Sample (30 ug of whole cell lysate) A: HeLa 15% SDS PAGE gel, diluted at 1:1000.



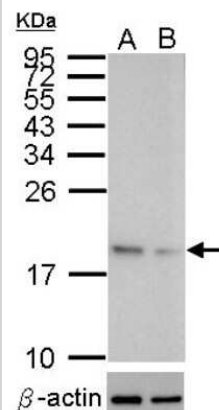
Western Blot: Superoxide Dismutase 1 Antibody [NBP2-20534] - Sample (50 ug of whole cell lysate) A: Mouse Brain, 15% SDS PAGE gel, diluted at 1:1000.



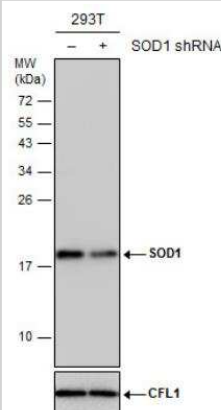
Western Blot: Superoxide Dismutase 1 Antibody [NBP2-20534] - Sample (50 ug of whole cell lysate) A: Rat brain, 15% SDS PAGE gel, diluted at 1:1000.



Western Blot: Superoxide Dismutase 1 Antibody [NBP2-20534] - Sample (10 ug of whole cell lysate). A: HeLa mock control, B: HeLa transfected shSOD1 15% SDS PAGE NBP2-20534 diluted at 1:500 .



Western Blot: SOD1/Cu-Zn SOD Antibody [NBP2-20534] - Non-transfected (-) and transfected (+) 293T whole cell extracts (30 ug) were separated by 15% SDS-PAGE, and the membrane was blotted with SOD1 antibody. HRP-conjugated anti-rabbit IgG antibody was used to detect the primary antibody.



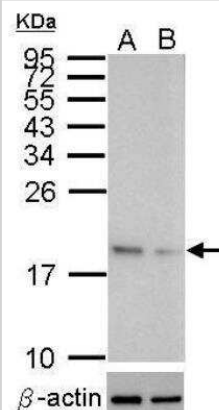
Western Blot: SOD1/Cu-Zn SOD Antibody [NBP2-20534] - Western blot analysis of SOD1 (upper panel) and beta-actin (lower panel) Sample (10 ug of whole cell lysate)

A: HeLa mock control

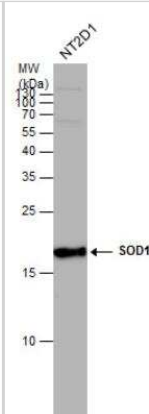
B: HeLa transfected shSOD1

15% SDS PAGE

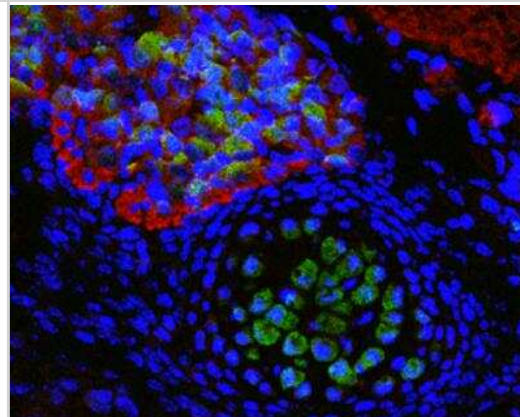
HRP-conjugated anti-rabbit IgG antibody was used to detect the primary antibody.



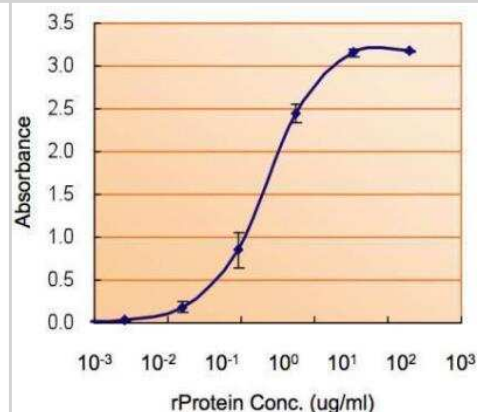
Western Blot: SOD1/Cu-Zn SOD Antibody [NBP2-20534] - SOD1 antibody detects SOD1 protein by western blot analysis. Whole cell extracts (30 ug) was separated by 15% SDS-PAGE, and the membrane was blotted with SOD1 antibody at a dilution of 1:1000. HRP-conjugated anti-rabbit IgG antibody was used to detect the primary antibody.



Immunohistochemistry-Frozen: SOD1/Cu-Zn SOD Antibody [NBP2-20534] - Immunofluorescence photomicrographs of paraffin-embedded mouse fetal brain. Green: SOD1 antibody diluted at 1:200. The signal was developed using goat anti-rabbit IgG antibody (Dylight488). Red: beta Tubulin 3/ TUJ1 antibody diluted at 1:100. The signal was developed using goat anti-mouse IgG antibody (Dylight594). Blue: Nuclear staining with Hoechst 33342. Antigen Retrieval: Citrate buffer, pH 6.0, 15 min



ELISA: SOD1/Cu-Zn SOD Antibody [NBP2-20534] - ELISA detection of SOD1 using SOD1 Antibody for detection at a concentration of 1.5 ug/mL.





Novus Biologicals USA

10730 E. Briarwood Avenue
Centennial, CO 80112
USA
Phone: 303.730.1950
Toll Free: 1.888.506.6887
Fax: 303.730.1966
nb-customerservice@bio-techne.com

Bio-Techne Canada

21 Canmotor Ave
Toronto, ON M8Z 4E6
Canada
Phone: 905.827.6400
Toll Free: 855.668.8722
Fax: 905.827.6402
canada.inquires@bio-techne.com

Bio-Techne Ltd

19 Barton Lane
Abingdon Science Park
Abingdon, OX14 3NB, United Kingdom
Phone: (44) (0) 1235 529449
Free Phone: 0800 37 34 15
Fax: (44) (0) 1235 533420
info.EMEA@bio-techne.com

General Contact Information

www.novusbio.com
Technical Support: nb-technical@bio-techne.com
Orders: nb-customerservice@bio-techne.com
General: novus@novusbio.com

Products Related to NBP2-20534

HAF008	Goat anti-Rabbit IgG Secondary Antibody [HRP]
NB7160	Goat anti-Rabbit IgG (H+L) Secondary Antibody [HRP]
NBP2-24891	Rabbit IgG Isotype Control
NBP2-34940-100ug	Recombinant Human SOD1/Cu-Zn SOD Protein

Limitations

This product is for research use only and is not approved for use in humans or in clinical diagnosis. Primary Antibodies are guaranteed for 1 year from date of receipt.

For more information on our 100% guarantee, please visit www.novusbio.com/guarantee

Earn gift cards/discounts by submitting a review: www.novusbio.com/reviews/submit/NBP2-20534

Earn gift cards/discounts by submitting a publication using this product:
www.novusbio.com/publications

