

# Product Datasheet

## SP1 Antibody - BSA Free NBP2-20460

Unit Size: 0.1 ml

Aliquot and store at -20C or -80C. Avoid freeze-thaw cycles.

[www.novusbio.com](http://www.novusbio.com)



[technical@novusbio.com](mailto:technical@novusbio.com)

### Publications: 2

Protocols, Publications, Related Products, Reviews, Research Tools and Images at:  
[www.novusbio.com/NBP2-20460](http://www.novusbio.com/NBP2-20460)

Updated 2/23/2025 v.20.1

Earn rewards for product  
reviews and publications.

Submit a publication at [www.novusbio.com/publications](http://www.novusbio.com/publications)

Submit a review at [www.novusbio.com/reviews/destination/NBP2-20460](http://www.novusbio.com/reviews/destination/NBP2-20460)



**NBP2-20460**

SP1 Antibody - BSA Free

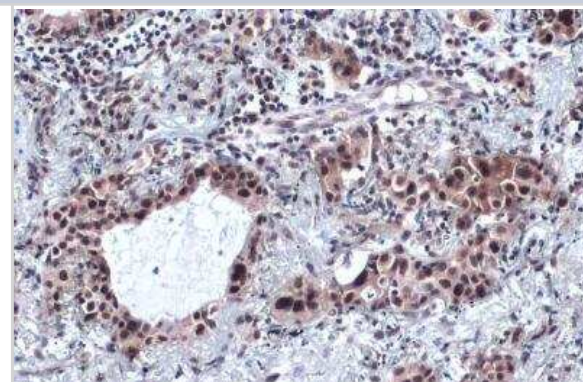
| Product Information            |  |
|--------------------------------|--|
| <b>Unit Size</b>               | 0.1 ml   |
| <b>Concentration</b>           | Concentrations vary lot to lot. See vial label for concentration. If unlisted please contact technical services. |
| <b>Storage</b>                 | Aliquot and store at -20C or -80C. Avoid freeze-thaw cycles.   |
| <b>Clonality</b>               | Polyclonal   |
| <b>Preservative</b>            | 0.025% Proclin 300   |
| <b>Isotype</b>                 | IgG  |
| <b>Purity</b>                  | Antigen Affinity-purified  |
| <b>Buffer</b>                  | PBS (pH 7), 20% Glycerol   |
| <b>Target Molecular Weight</b> | 81 kDa   |

| Product Description |   |
|---------------------|---|
| <b>Host</b>         | Rabbit  |
| <b>Gene ID</b>      | 6667  |
| <b>Gene Symbol</b>  | SP1   |
| <b>Species</b>      | Human, Mouse, Rat   |
| <b>Immunogen</b>    | Recombinant protein encompassing a sequence within the center region of human SP1. The exact sequence is proprietary. |

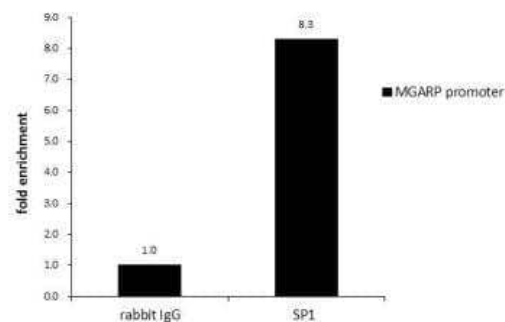
| Product Application Details  |   |
|------------------------------|---|
| <b>Applications</b>          | Western Blot, Immunocytochemistry/ Immunofluorescence, Immunohistochemistry, Immunohistochemistry-Paraffin, Immunoprecipitation, Chromatin Immunoprecipitation (ChIP)   |
| <b>Recommended Dilutions</b> | Western Blot 1:500-1:3000, Immunohistochemistry 1:100-1:1000, Immunocytochemistry/ Immunofluorescence 1:100-1:1000, Immunoprecipitation 1:100-1:500, Immunohistochemistry-Paraffin 1:100-1:1000, Chromatin Immunoprecipitation (ChIP) |
| <b>Application Notes</b>     | Chip-Assay dependent  |

**Images**

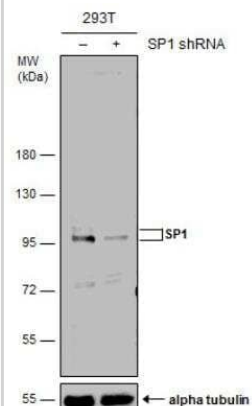
Immunohistochemistry-Paraffin: SP1 Antibody [NBP2-20460] - SP1 antibody detects SP1 protein at cytoplasm and nucleus by immunohistochemical analysis. Sample: Paraffin-embedded human lung cancer. SP1 stained by SP1 antibody diluted at 1:2000. Antigen Retrieval: Citrate buffer, pH 6.0, 15 min.



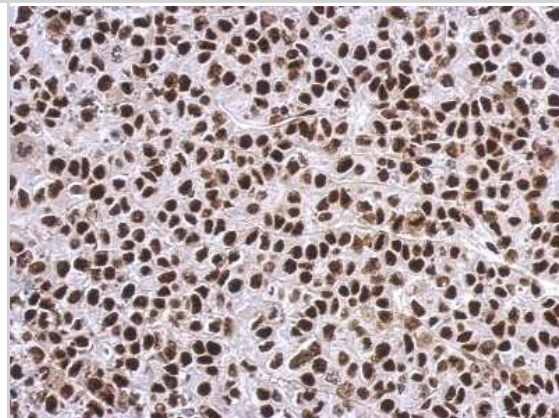
Chromatin Immunoprecipitation: SP1 Antibody [NBP2-20460] - CHIP was performed with 293T chromatin extract and 5 ug of either normal rabbit IgG or anti-SP1 antibody. The precipitated DNA was detected by PCR with primer set targeting to MGARP promoter.



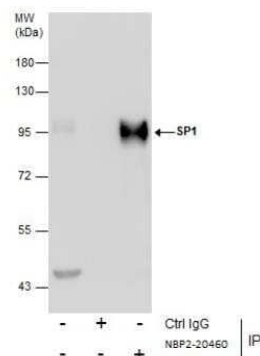
Western Blot: SP1 Antibody [NBP2-20460] - Non-transfected (-) and transfected (+) 293T whole cell extracts (50 ug) were separated by 7.5% SDS-PAGE, and the membrane was blotted with SP1 antibody. HRP-conjugated anti-rabbit IgG antibody was used to detect the primary antibody, and the signal was developed with Trident ECL plus-Enhanced.



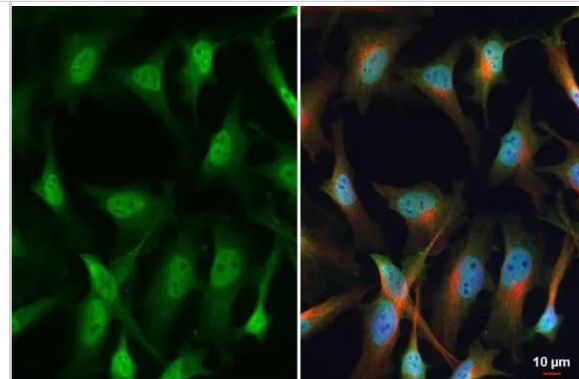
Immunohistochemistry-Paraffin: SP1 Antibody [NBP2-20460] - Immunohistochemical analysis of paraffin-embedded Hela xenograft, using antibody at 1:500 dilution.



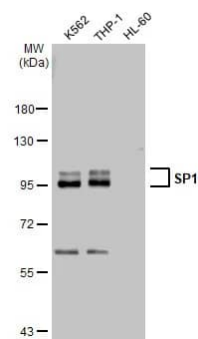
Immunoprecipitation: SP1 Antibody [NBP2-20460] - Immunoprecipitation of SP1 protein from THP-1 whole cell extracts using 5 ug of OCT1 antibody (NBP2-20460). Western blot analysis was performed using OCT1 antibody (NBP2-20460). EasyBlot anti-Rabbit IgG was used as a secondary reagent.



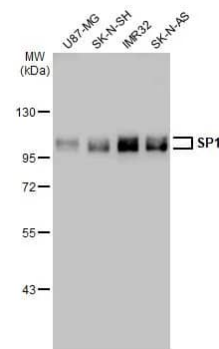
Immunocytochemistry/ Immunofluorescence: SP1 Antibody [NBP2-20460] - SP1 antibody detects SP1 protein at nucleus by immunofluorescent analysis. Sample: HeLa cells were fixed in 4% paraformaldehyde at RT for 15 min. Green: SP1 stained by SP1 antibody (NBP2-20460) diluted at 1:100. Red: alpha Tubulin, a cytoskeleton marker, stained by alpha Tubulin antibody [GT114] diluted at 1:1000. Blue: Fluoroshield with DAPI .



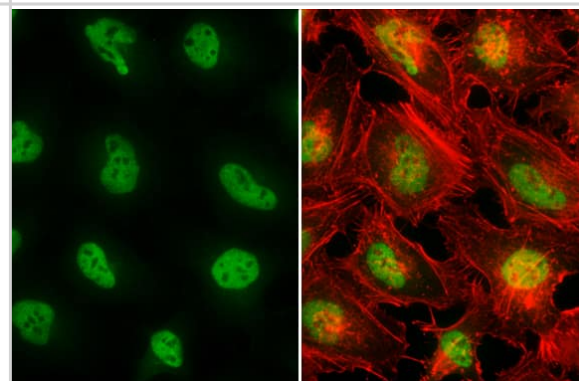
Western Blot: SP1 Antibody [NBP2-20460] - Various whole cell extracts (30 ug) were separated by 7.5% SDS-PAGE, and the membrane was blotted with SP1 antibody (NBP2-20460) diluted at 1:2000. The HRP-conjugated anti-rabbit IgG antibody was used to detect the primary antibody.



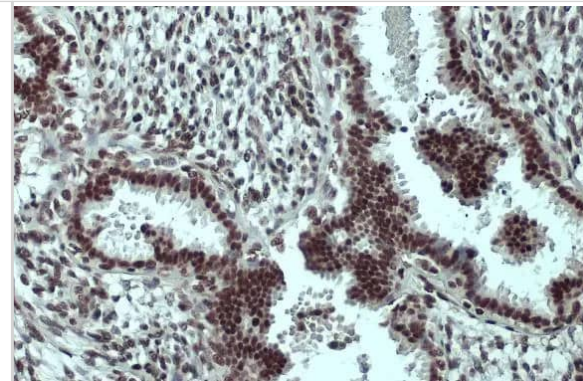
Western Blot: SP1 Antibody [NBP2-20460] - Various whole cell extracts (30 ug) were separated by 7.5% SDS-PAGE, and the membrane was blotted with SP1 antibody (NBP2-20460) diluted at 1:2000. The HRP-conjugated anti-rabbit IgG antibody was used to detect the primary antibody.



Immunocytochemistry/ Immunofluorescence: SP1 Antibody [NBP2-20460] - SP1 antibody detects SP1 protein at nucleus by immunofluorescent analysis. Sample: HeLa cells were fixed in 4% paraformaldehyde at RT for 15 min. Green: SP1 stained by SP1 antibody (NBP2-20460) diluted at 1:1000. Red: phalloidin, a cytoskeleton marker, diluted at 1:200.



Immunohistochemistry-Paraffin: SP1 Antibody [NBP2-20460] - SP1 antibody detects SP1 protein at nucleus by immunohistochemical analysis. Sample: Paraffin-embedded human breast carcinoma. SP1 stained by SP1 antibody (NBP2-20460) diluted at 1:500. Antigen Retrieval: Citrate buffer, pH 6.0, 15 min



## Publications

Zhang H, Gao Y, Liu B et al. The activation of M (3) muscarinic receptor reverses liver injury via the Sp1/lncRNA Gm2199/miR-212 axis *Acta Biochimica et Biophysica Sinica* 2022-09-25 [PMID: 36111745] (Western Blot)

Zhang Z, Zhang X, Wang C Et al. Deacetylated Sp1 improves beta-glycerophosphate induced calcification in vascular smooth muscle cells *Experimental and Therapeutic Medicine* 2021-08-10 [PMID: 34504597] (IP, Chemotaxis, WB, Rat)



### **Novus Biologicals USA**

10730 E. Briarwood Avenue  
Centennial, CO 80112  
USA  
Phone: 303.730.1950  
Toll Free: 1.888.506.6887  
Fax: 303.730.1966  
nb-customerservice@bio-techne.com

### **Bio-Techne Canada**

21 Canmotor Ave  
Toronto, ON M8Z 4E6  
Canada  
Phone: 905.827.6400  
Toll Free: 855.668.8722  
Fax: 905.827.6402  
canada.inquires@bio-techne.com

### **Bio-Techne Ltd**

19 Barton Lane  
Abingdon Science Park  
Abingdon, OX14 3NB, United Kingdom  
Phone: (44) (0) 1235 529449  
Free Phone: 0800 37 34 15  
Fax: (44) (0) 1235 533420  
info.EMEA@bio-techne.com

### **General Contact Information**

[www.novusbio.com](http://www.novusbio.com)  
Technical Support: [nb-technical@bio-techne.com](mailto:nb-technical@bio-techne.com)  
Orders: [nb-customerservice@bio-techne.com](mailto:nb-customerservice@bio-techne.com)  
General: [novus@novusbio.com](mailto:novus@novusbio.com)

### **Products Related to NBP2-20460**

---

|                    |   |
|--------------------|---|
| HAF008             | Goat anti-Rabbit IgG Secondary Antibody [HRP]       |
| NB7160             | Goat anti-Rabbit IgG (H+L) Secondary Antibody [HRP] |
| NBP2-24891         | Rabbit IgG Isotype Control                          |
| H00006667-Q01-10ug | Recombinant Human SP1 GST (N-Term) Protein          |

---

### **Limitations**

This product is for research use only and is not approved for use in humans or in clinical diagnosis. Primary Antibodies are guaranteed for 1 year from date of receipt.

For more information on our 100% guarantee, please visit [www.novusbio.com/guarantee](http://www.novusbio.com/guarantee)

Earn gift cards/discounts by submitting a review: [www.novusbio.com/reviews/submit/NBP2-20460](http://www.novusbio.com/reviews/submit/NBP2-20460)

Earn gift cards/discounts by submitting a publication using this product:  
[www.novusbio.com/publications](http://www.novusbio.com/publications)

