

# Product Datasheet

## SLC25A6 Antibody - BSA Free NBP2-20394

Unit Size: 0.1 ml

Aliquot and store at -20C or -80C. Avoid freeze-thaw cycles.

[www.novusbio.com](http://www.novusbio.com)



[technical@novusbio.com](mailto:technical@novusbio.com)

Protocols, Publications, Related Products, Reviews, Research Tools and Images at:  
[www.novusbio.com/NBP2-20394](http://www.novusbio.com/NBP2-20394)

Updated 2/23/2025 v.20.1

Earn rewards for product  
reviews and publications.

Submit a publication at [www.novusbio.com/publications](http://www.novusbio.com/publications)

Submit a review at [www.novusbio.com/reviews/destination/NBP2-20394](http://www.novusbio.com/reviews/destination/NBP2-20394)



**NBP2-20394**

SLC25A6 Antibody - BSA Free

| Product Information     |  |
|-------------------------|--|
| Unit Size               | 0.1 ml   |
| Concentration           | Concentrations vary lot to lot. See vial label for concentration. If unlisted please contact technical services. |
| Storage                 | Aliquot and store at -20C or -80C. Avoid freeze-thaw cycles.   |
| Clonality               | Polyclonal   |
| Preservative            | 0.025% Proclin 300   |
| Isotype                 | IgG  |
| Purity                  | Antigen Affinity-purified  |
| Buffer                  | PBS (pH 7), 20% Glycerol   |
| Target Molecular Weight | 33 kDa   |

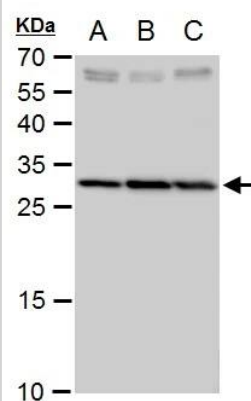
| Product Description |   |
|---------------------|---|
| Host                | Rabbit  |
| Gene ID             | 293   |
| Gene Symbol         | SLC25A6   |
| Species             | Human   |
| Immunogen           | Recombinant protein encompassing a sequence within the center region of human SLC25A6. The exact sequence is proprietary. |

| Product Application Details |   |
|-----------------------------|---|
| Applications                | Western Blot, Immunocytochemistry/ Immunofluorescence                         |
| Recommended Dilutions       | Western Blot 1:500-1:3000, Immunocytochemistry/ Immunofluorescence 1:10-1:500 |

**Images**

Western Blot: SLC25A6 Antibody [NBP2-20394] - SLC25A6 antibody detects SLC25A6 protein by western blot analysis.

- A. 30 ug Jurkat whole cell extract
  - B. 30 ug Raji whole cell extract
  - C. 30 ug NCI-H929 whole cell extract
- 12 % SDS-PAGE  
SLC25A6 antibody (NBP2-20394) dilution: 1:500





### **Novus Biologicals USA**

10730 E. Briarwood Avenue  
Centennial, CO 80112  
USA  
Phone: 303.730.1950  
Toll Free: 1.888.506.6887  
Fax: 303.730.1966  
nb-customerservice@bio-techne.com

### **Bio-Techne Canada**

21 Canmotor Ave  
Toronto, ON M8Z 4E6  
Canada  
Phone: 905.827.6400  
Toll Free: 855.668.8722  
Fax: 905.827.6402  
canada.inquires@bio-techne.com

### **Bio-Techne Ltd**

19 Barton Lane  
Abingdon Science Park  
Abingdon, OX14 3NB, United Kingdom  
Phone: (44) (0) 1235 529449  
Free Phone: 0800 37 34 15  
Fax: (44) (0) 1235 533420  
info.EMEA@bio-techne.com

### **General Contact Information**

www.novusbio.com  
Technical Support: nb-technical@bio-techne.com  
Orders: nb-customerservice@bio-techne.com  
General: novus@novusbio.com

### **Products Related to NBP2-20394**

---

|                |   |
|----------------|---|
| HAF008         | Goat anti-Rabbit IgG Secondary Antibody [HRP]       |
| NB7160         | Goat anti-Rabbit IgG (H+L) Secondary Antibody [HRP] |
| NBP2-24891     | Rabbit IgG Isotype Control                          |
| 6507-IL-010/CF | IL-4 [Unconjugated]                                 |

---

### **Limitations**

This product is for research use only and is not approved for use in humans or in clinical diagnosis. Primary Antibodies are guaranteed for 1 year from date of receipt.

For more information on our 100% guarantee, please visit [www.novusbio.com/guarantee](http://www.novusbio.com/guarantee)

Earn gift cards/discounts by submitting a review: [www.novusbio.com/reviews/submit/NBP2-20394](http://www.novusbio.com/reviews/submit/NBP2-20394)

Earn gift cards/discounts by submitting a publication using this product:  
[www.novusbio.com/publications](http://www.novusbio.com/publications)

