

Product Datasheet

SLC25A6 Antibody NBP2-20393

Unit Size: 0.1 ml

Aliquot and store at -20C or -80C. Avoid freeze-thaw cycles.

www.novusbio.com



technical@novusbio.com

Protocols, Publications, Related Products, Reviews, Research Tools and Images at:
www.novusbio.com/NBP2-20393

Updated 10/23/2024 v.20.1

Earn rewards for product
reviews and publications.

Submit a publication at www.novusbio.com/publications

Submit a review at www.novusbio.com/reviews/destination/NBP2-20393



NBP2-20393

SLC25A6 Antibody

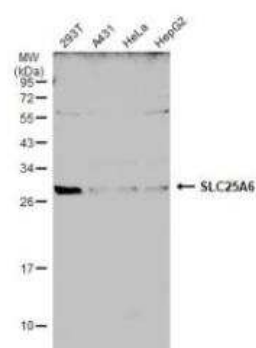
Product Information	
Unit Size	0.1 ml
Concentration	Concentrations vary lot to lot. See vial label for concentration. If unlisted please contact technical services.
Storage	Aliquot and store at -20C or -80C. Avoid freeze-thaw cycles.
Clonality	Polyclonal
Preservative	0.025% Proclin 300
Isotype	IgG
Purity	Antigen Affinity-purified
Buffer	PBS (pH 7), 20% Glycerol, 1% BSA
Target Molecular Weight	33 kDa

Product Description	
Host	Rabbit
Gene ID	293
Gene Symbol	SLC25A6
Species	Human, Mouse, Rat
Immunogen	Recombinant protein encompassing a sequence within the center region of human SLC25A6. The exact sequence is proprietary.

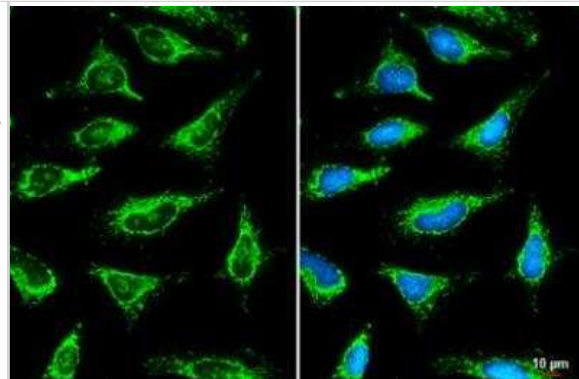
Product Application Details	
Applications	Western Blot, Immunocytochemistry/ Immunofluorescence, Immunohistochemistry, Immunohistochemistry-Paraffin, Immunoprecipitation
Recommended Dilutions	Western Blot 1:500-1:3000, Immunohistochemistry 1:100-1:1000, Immunocytochemistry/ Immunofluorescence 1:100-1:1000, Immunoprecipitation 1:100-1:500, Immunohistochemistry-Paraffin 1:100-1:1000

Images

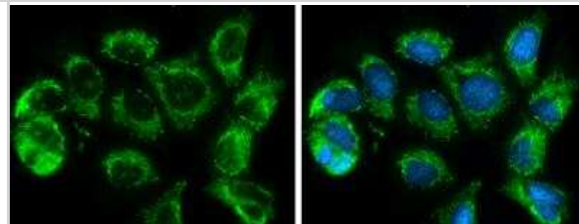
Western Blot: SLC25A6 Antibody [NBP2-20393] - Various whole cell extracts (30 ug) were separated by 12% SDS-PAGE, and the membrane was blotted with SLC25A6 antibody (NBP2-20393) diluted at 1:2000. The HRP-conjugated anti-rabbit IgG antibody (NBP2-19301) was used to detect the primary antibody.



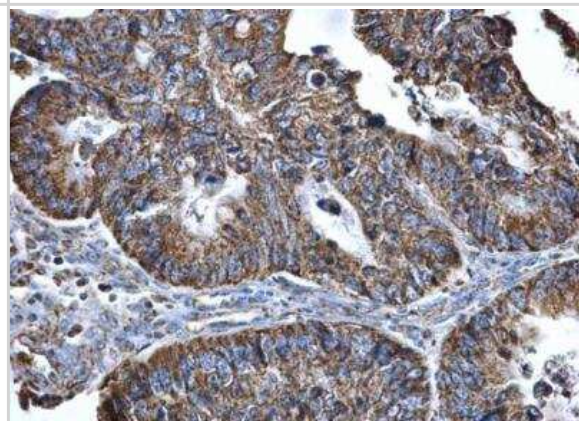
Immunocytochemistry/Immunofluorescence: SLC25A6 Antibody [NBP2-20393] - SLC25A6 antibody detects SLC25A6 protein at mitochondria by immunofluorescent analysis. Sample: HeLa cells were fixed in ice-cold MeOH for 5 min. Green: SLC25A6 stained by SLC25A6 antibody (NBP2-20393) diluted at 1:500. Blue: Fluoroshield with DAPI. Scale bar= 10 μ m.



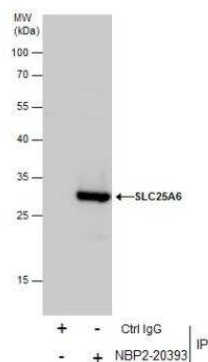
Immunocytochemistry/Immunofluorescence: SLC25A6 Antibody [NBP2-20393] - MCF7 cells were fixed in 4% paraformaldehyde at RT for 15 min. Green: SLC25A6 protein stained by SLC25A6 antibody diluted at 1:500. Blue: Hoechst 33342 staining.



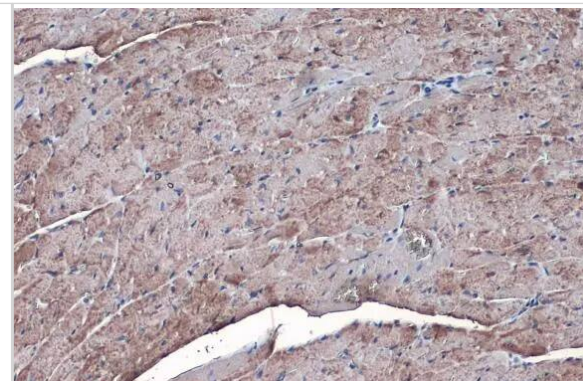
Immunohistochemistry-Paraffin: SLC25A6 Antibody [NBP2-20393] - Paraffin-embedded human colon cancer. SLC25A6 antibody diluted at 1:500.



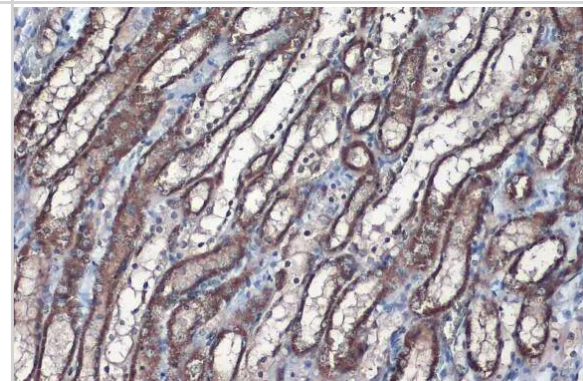
Immunoprecipitation: SLC25A6 Antibody [NBP2-20393] - Immunoprecipitation of SLC25A6 protein from 293T whole cell extracts using 5 μ g of SLC25A6 antibody (NBP2-20393). Western blot analysis was performed using SLC25A6 antibody (NBP2-20393). EasyBlot anti-Rabbit IgG was used as a secondary reagent.



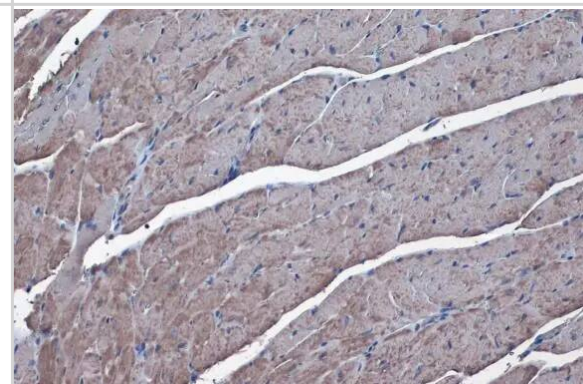
Immunohistochemistry-Paraffin: SLC25A6 Antibody [NBP2-20393] - SLC25A6 antibody detects SLC25A6 protein at mitochondria by immunohistochemical analysis. Sample: Paraffin-embedded mouse heart. SLC25A6 stained by SLC25A6 antibody (NBP2-20393) diluted at 1:1000. Antigen Retrieval: Citrate buffer, pH 6.0, 15 min



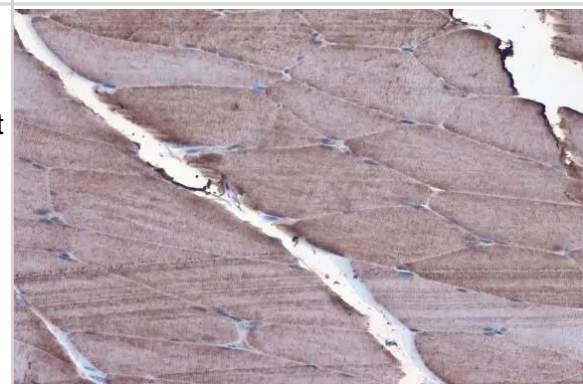
Immunohistochemistry-Paraffin: SLC25A6 Antibody [NBP2-20393] - SLC25A6 antibody detects SLC25A6 protein at mitochondria by immunohistochemical analysis. Sample: Paraffin-embedded rat kidney. SLC25A6 stained by SLC25A6 antibody (NBP2-20393) diluted at 1:1000. Antigen Retrieval: Citrate buffer, pH 6.0, 15 min



Immunohistochemistry-Paraffin: SLC25A6 Antibody [NBP2-20393] - SLC25A6 antibody detects SLC25A6 protein at mitochondria by immunohistochemical analysis. Sample: Paraffin-embedded mouse heart. SLC25A6 stained by SLC25A6 antibody (NBP2-20393) diluted at 1:1000. Antigen Retrieval: Citrate buffer, pH 6.0, 15 min



Immunohistochemistry-Paraffin: SLC25A6 Antibody [NBP2-20393] - SLC25A6 antibody detects SLC25A6 protein at mitochondria by immunohistochemical analysis. Sample: Paraffin-embedded rat muscle. SLC25A6 stained by SLC25A6 antibody (NBP2-20393) diluted at 1:1000. Antigen Retrieval: Citrate buffer, pH 6.0, 15 min





Novus Biologicals USA

10730 E. Briarwood Avenue
Centennial, CO 80112
USA
Phone: 303.730.1950
Toll Free: 1.888.506.6887
Fax: 303.730.1966
nb-customerservice@bio-techne.com

Bio-Techne Canada

21 Canmotor Ave
Toronto, ON M8Z 4E6
Canada
Phone: 905.827.6400
Toll Free: 855.668.8722
Fax: 905.827.6402
canada.inquires@bio-techne.com

Bio-Techne Ltd

19 Barton Lane
Abingdon Science Park
Abingdon, OX14 3NB, United Kingdom
Phone: (44) (0) 1235 529449
Free Phone: 0800 37 34 15
Fax: (44) (0) 1235 533420
info.EMEA@bio-techne.com

General Contact Information

www.novusbio.com
Technical Support: nb-technical@bio-techne.com
Orders: nb-customerservice@bio-techne.com
General: novus@novusbio.com

Products Related to NBP2-20393

HAF008	Goat anti-Rabbit IgG Secondary Antibody [HRP]
NB7160	Goat anti-Rabbit IgG (H+L) Secondary Antibody [HRP]
NBP2-24891	Rabbit IgG Isotype Control
6507-IL-010/CF	IL-4 [Unconjugated]

Limitations

This product is for research use only and is not approved for use in humans or in clinical diagnosis. Primary Antibodies are guaranteed for 1 year from date of receipt.

For more information on our 100% guarantee, please visit www.novusbio.com/guarantee

Earn gift cards/discounts by submitting a review: www.novusbio.com/reviews/submit/NBP2-20393

Earn gift cards/discounts by submitting a publication using this product:
www.novusbio.com/publications

