

Product Datasheet

SETDB1 Antibody NBP2-20321

Unit Size: 0.1 ml

Aliquot and store at -20C or -80C. Avoid freeze-thaw cycles.

www.novusbio.com



technical@novusbio.com

Publications: 1

Protocols, Publications, Related Products, Reviews, Research Tools and Images at:
www.novusbio.com/NBP2-20321

Updated 10/23/2024 v.20.1

Earn rewards for product
reviews and publications.

Submit a publication at www.novusbio.com/publications

Submit a review at www.novusbio.com/reviews/destination/NBP2-20321



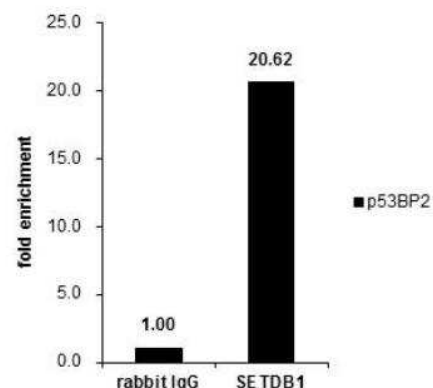
NBP2-20321**SETDB1 Antibody**

Product Information	
Unit Size	0.1 ml
Concentration	Concentrations vary lot to lot. See vial label for concentration. If unlisted please contact technical services.
Storage	Aliquot and store at -20C or -80C. Avoid freeze-thaw cycles.
Clonality	Polyclonal
Preservative	0.01% Thimerosal
Isotype	IgG
Purity	Antigen Affinity-purified
Buffer	PBS (pH 7), 20% Glycerol, 1% BSA
Target Molecular Weight	143 kDa
Product Description	
Host	Rabbit
Gene ID	9869
Gene Symbol	SETDB1
Species	Human, Mouse
Reactivity Notes	Rat (89%).
Immunogen	Recombinant protein encompassing a sequence within the center region of human SETDB1. The exact sequence is proprietary.
Product Application Details	
Applications	Western Blot, Immunohistochemistry, Immunohistochemistry-Paraffin, In vitro assay, Immunoprecipitation, Block/Neutralize, Chromatin Immunoprecipitation (ChIP)
Recommended Dilutions	Western Blot 1:500-1:3000, Immunohistochemistry, Immunoprecipitation 1:100-1:500, Immunohistochemistry-Paraffin Assay dependent, In vitro assay Reported in scientific literature (PMID: 24844442), Chromatin Immunoprecipitation (ChIP) Assay dependent, Block/Neutralize Reported in scientific literature (PMID: 24844442)

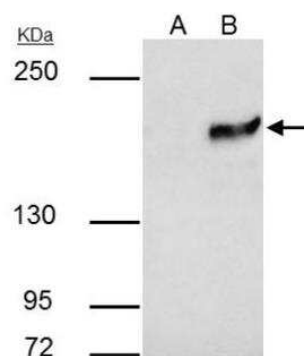


Images

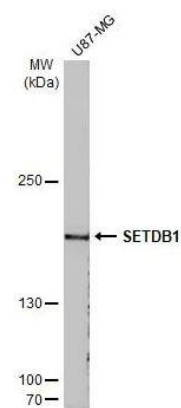
Chromatin Immunoprecipitation: SETDB1 Antibody [NBP2-20321] - Cross-linked ChIP was performed with HeLa chromatin extract and 5 ug of either control rabbit IgG or anti-SETDB1 antibody. The precipitated DNA was detected by PCR with primer set targeting to P53P2.



Immunoprecipitation: SETDB1 Antibody [NBP2-20321] - IP samples: HeLa nuclear extract A. Control with 4 ug of preimmune Rabbit IgG B. Immunoprecipitation of SETDB1 protein by 4 ug SETDB1 antibody [N1], N-term 5 % SDS-PAGE The immunoprecipitated SETDB1 protein was detected by SETDB1 antibody [N1], N-term diluted at 1:1000. [EasyBlot anti-rabbit IgG was used as a secondary reagent].



Western Blot: SETDB1 Antibody [NBP2-20321] - Whole cell extract (30 ug) was separated by 5% SDS-PAGE, and the membrane was blotted with SETDB1 antibody [N1], N-term diluted at 1:2000. The HRP-conjugated anti-rabbit IgG antibody (NBP2-19301) was used to detect the primary antibody.



Publications

Skuland T, Ovrevik J, Lag M et al. Silica nanoparticles induce cytokine responses in lung epithelial cells through activation of a p38/TACE/TGF- α /EGFR-pathway and NF- κ B signalling. Toxicol. Appl. Pharmacol. 2014-05-17 [PMID: 24844442] (In vitro, B/N, Human)

Details:
BEAS-2B cells, Fig 5A, B. Cells were pretreated with the NF κ B p65 inhibitor (50 μ M) for 1 hr prior to silica nanoparticle (Si50) exposure. The NF κ B p65 inhibitor markedly reduced IL-6 and CXCL8 responses to Si50.



Novus Biologicals USA

10730 E. Briarwood Avenue
Centennial, CO 80112
USA
Phone: 303.730.1950
Toll Free: 1.888.506.6887
Fax: 303.730.1966
nb-customerservice@bio-techne.com

Bio-Techne Canada

21 Canmotor Ave
Toronto, ON M8Z 4E6
Canada
Phone: 905.827.6400
Toll Free: 855.668.8722
Fax: 905.827.6402
canada.inquires@bio-techne.com

Bio-Techne Ltd

19 Barton Lane
Abingdon Science Park
Abingdon, OX14 3NB, United Kingdom
Phone: (44) (0) 1235 529449
Free Phone: 0800 37 34 15
Fax: (44) (0) 1235 533420
info.EMEA@bio-techne.com

General Contact Information

www.novusbio.com
Technical Support: nb-technical@bio-techne.com
Orders: nb-customerservice@bio-techne.com
General: novus@novusbio.com

Products Related to NBP2-20321

HAF008	Goat anti-Rabbit IgG Secondary Antibody [HRP]
NB7160	Goat anti-Rabbit IgG (H+L) Secondary Antibody [HRP]
NBP2-24891	Rabbit IgG Isotype Control
NBP2-56678PEP	SETDB1 Recombinant Protein Antigen

Limitations

This product is for research use only and is not approved for use in humans or in clinical diagnosis. Primary Antibodies are guaranteed for 1 year from date of receipt.

For more information on our 100% guarantee, please visit www.novusbio.com/guarantee

Earn gift cards/discounts by submitting a review: www.novusbio.com/reviews/submit/NBP2-20321

Earn gift cards/discounts by submitting a publication using this product:
www.novusbio.com/publications

