

Product Datasheet

Retinol Binding Protein RBP Antibody - BSA Free NBP2-20132

Unit Size: 0.1 ml

Aliquot and store at -20C or -80C. Avoid freeze-thaw cycles.

www.novusbio.com



technical@novusbio.com

Publications: 1

Protocols, Publications, Related Products, Reviews, Research Tools and Images at:
www.novusbio.com/NBP2-20132

Updated 2/23/2025 v.20.1

Earn rewards for product
reviews and publications.

Submit a publication at www.novusbio.com/publications

Submit a review at www.novusbio.com/reviews/destination/NBP2-20132

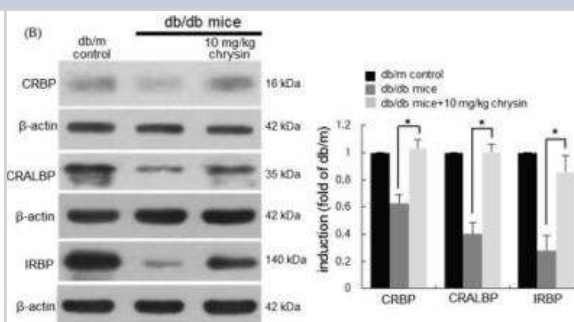


NBP2-20132**Retinol Binding Protein RBP Antibody - BSA Free**

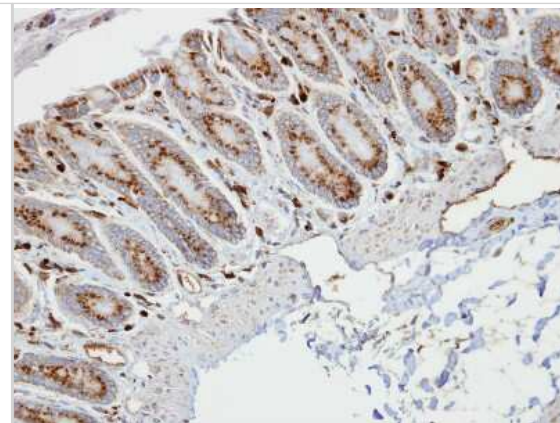
Product Information	
Unit Size	0.1 ml
Concentration	Concentrations vary lot to lot. See vial label for concentration. If unlisted please contact technical services.
Storage	Aliquot and store at -20C or -80C. Avoid freeze-thaw cycles.
Clonality	Polyclonal
Preservative	0.025% Proclin 300
Isotype	IgG
Purity	Antigen Affinity-purified
Buffer	PBS (pH 7), 20% Glycerol
Target Molecular Weight	16 kDa
Product Description	
Host	Rabbit
Gene ID	5947
Gene Symbol	RBP1
Species	Human, Mouse
Immunogen	Carrier-protein conjugated synthetic peptide encompassing a sequence within the center region of human Retinol Binding Protein RBP. The exact sequence is proprietary.
Product Application Details	
Applications	Western Blot, Immunocytochemistry/ Immunofluorescence, Immunohistochemistry, Immunohistochemistry-Paraffin
Recommended Dilutions	Western Blot 1:1000-1:10000, Immunohistochemistry 1:100-1:1000, Immunocytochemistry/ Immunofluorescence 1:100-1:1000, Immunohistochemistry-Paraffin 1:100-1:1000

Images

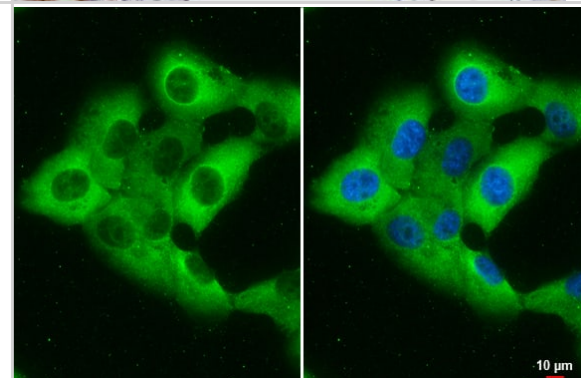
Western Blot: Retinol Binding Protein RBP Antibody [NBP2-20132] - Elevation of retinal tissue induction of visual cycle enzymes stimulated by retinoic acid 6 (STRA6, C) in chrysin-treated mice. The db/db mice were orally supplemented with 10 mg/kg of chrysin daily for 10 weeks. The db/m mice were introduced as control animals. Mouse retinal tissue extracts were subject to Western blot analysis with a primary antibody against each target protein of LRAT, RDH5, cellular retinol binding protein (CRBP), CRALBP, IRBP, or STRA6. beta-actin protein was used as an internal control. Bar graphs (mean +- SEM, n = nine independent experiments) in the bottom or right panels represent densitometric results of upper blot bands. * Values in bar graphs indicate a significant difference at p<0.05. Image collected and cropped by CiteAb from the following publication (mdpi.com/2072-6643/10/8/1046), licensed under a CC-BY license



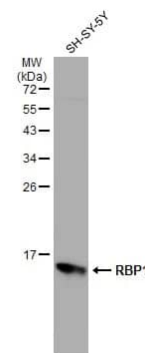
Immunohistochemistry-Paraffin: Retinol Binding Protein RBP Antibody [NBP2-20132] - Human colon, at 1:100 dilution. Antigen Retrieval: Trilogy™ (EDTA based, pH 8.0) buffer, 15min



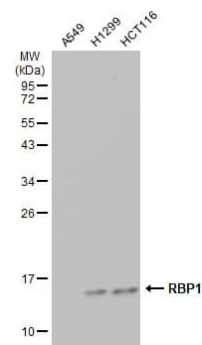
Immunocytochemistry/ Immunofluorescence: Retinol Binding Protein RBP Antibody [NBP2-20132] - Retinol Binding Protein RBP antibody detects Retinol Binding Protein RBP protein at cytoplasm by immunofluorescent analysis. Sample: H1299 cells were fixed in 4% paraformaldehyde at RT for 15 min. Green: Retinol Binding Protein RBP stained by Retinol Binding Protein RBP antibody (NBP2-20132) diluted at 1:500. Blue: Fluoroshield with DAPI .Scale bar= 10 um.



Western Blot: Retinol Binding Protein RBP Antibody [NBP2-20132] - Whole cell extract (30 ug) was separated by 12% SDS-PAGE, and the membrane was blotted with Retinol Binding Protein RBP antibody (NBP2-20132) diluted at 1:5000. The HRP-conjugated anti-rabbit IgG antibody was used to detect the primary antibody.



Western Blot: Retinol Binding Protein RBP Antibody [NBP2-20132] - Various whole cell extracts (30 ug) were separated by 12% SDS-PAGE, and the membrane was blotted with Retinol Binding Protein RBP antibody (NBP2-20132) diluted at 1:5000. The HRP-conjugated anti-rabbit IgG antibody was used to detect the primary antibody.



Publications

Kang MK, Lee EJ, Kim YH et al. Chrysin Ameliorates Malfunction of Retinoid Visual Cycle through Blocking Activation of AGE-RAGE-ER Stress in Glucose-Stimulated Retinal Pigment Epithelial Cells and Diabetic Eyes. *Nutrients* 2018-08-08 [PMID: 30096827] (WB, Mouse)



Novus Biologicals USA

10730 E. Briarwood Avenue
Centennial, CO 80112
USA
Phone: 303.730.1950
Toll Free: 1.888.506.6887
Fax: 303.730.1966
nb-customerservice@bio-techne.com

Bio-Techne Canada

21 Canmotor Ave
Toronto, ON M8Z 4E6
Canada
Phone: 905.827.6400
Toll Free: 855.668.8722
Fax: 905.827.6402
canada.inquires@bio-techne.com

Bio-Techne Ltd

19 Barton Lane
Abingdon Science Park
Abingdon, OX14 3NB, United Kingdom
Phone: (44) (0) 1235 529449
Free Phone: 0800 37 34 15
Fax: (44) (0) 1235 533420
info.EMEA@bio-techne.com

General Contact Information

www.novusbio.com
Technical Support: nb-technical@bio-techne.com
Orders: nb-customerservice@bio-techne.com
General: novus@novusbio.com

Products Related to NBP2-20132

HAF008	Goat anti-Rabbit IgG Secondary Antibody [HRP]
NB7160	Goat anti-Rabbit IgG (H+L) Secondary Antibody [HRP]
NBP2-24891	Rabbit IgG Isotype Control
NBP1-72542-50ug	Recombinant Human Retinol Binding Protein RBP His Protein

Limitations

This product is for research use only and is not approved for use in humans or in clinical diagnosis. Primary Antibodies are guaranteed for 1 year from date of receipt.

For more information on our 100% guarantee, please visit www.novusbio.com/guarantee

Earn gift cards/discounts by submitting a review: www.novusbio.com/reviews/submit/NBP2-20132

Earn gift cards/discounts by submitting a publication using this product:
www.novusbio.com/publications

