

Product Datasheet

RelB Antibody NBP2-20123

Unit Size: 0.1 ml

Aliquot and store at -20C or -80C. Avoid freeze-thaw cycles.

www.novusbio.com



technical@novusbio.com

Publications: 1

Protocols, Publications, Related Products, Reviews, Research Tools and Images at:
www.novusbio.com/NBP2-20123

Updated 10/23/2024 v.20.1

Earn rewards for product
reviews and publications.

Submit a publication at www.novusbio.com/publications

Submit a review at www.novusbio.com/reviews/destination/NBP2-20123



NBP2-20123

RelB Antibody

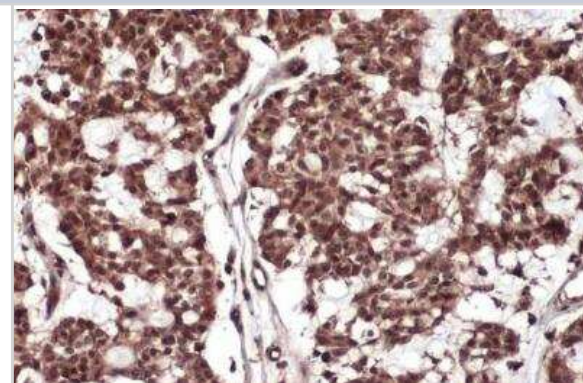
Product Information	
Unit Size	0.1 ml
Concentration	Concentrations vary lot to lot. See vial label for concentration. If unlisted please contact technical services.
Storage	Aliquot and store at -20C or -80C. Avoid freeze-thaw cycles.
Clonality	Polyclonal
Preservative	0.025% Proclin 300
Isotype	IgG
Purity	Antigen Affinity-purified
Buffer	PBS (pH 7), 20% Glycerol, 1% BSA
Target Molecular Weight	62 kDa

Product Description	
Host	Rabbit
Gene ID	5971
Gene Symbol	RELB
Species	Human, Mouse
Immunogen	Recombinant protein encompassing a sequence within the C-terminus region of human RelB. The exact sequence is proprietary.

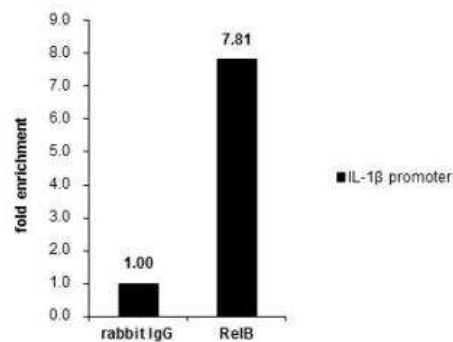
Product Application Details	
Applications	Western Blot, Immunohistochemistry, Immunohistochemistry-Paraffin, Immunoprecipitation, Chromatin Immunoprecipitation (ChIP)
Recommended Dilutions	Western Blot 1:1000-1:10000, Immunohistochemistry 1:100-1:1000, Immunoprecipitation 1:100-1:500, Immunohistochemistry-Paraffin 1:100-1:1000, Chromatin Immunoprecipitation (ChIP)
Application Notes	Chip assay-Assay dependent

Images

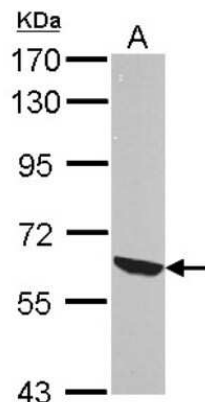
Immunohistochemistry-Paraffin: RelB Antibody [NBP2-20123] - Human breast carcinoma. RelB stained by RelB antibody diluted at 1:500. Antigen Retrieval: Citrate buffer, pH 6.0, 15 min.



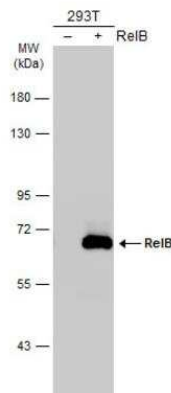
Chromatin Immunoprecipitation: RelB Antibody [NBP2-20123] - Cross-linked ChIP was performed with THP-1 chromatin extract treated with LPS (1.0 ug/ml for 3 h) and 5 ug of either normal rabbit IgG or anti-RelB antibody. The precipitated DNA was detected by PCR with primer set targeting to IL-1 beta promoter.



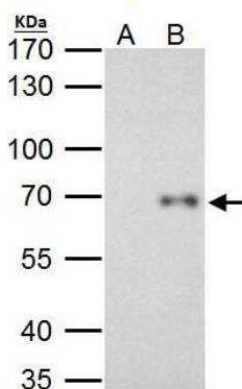
Western Blot: Rel B Antibody [NBP2-20123] - Sample (30 ug of whole cell lysate) A: NIH-3T3 7.5% SDS PAGE gel, diluted at 1:10000.



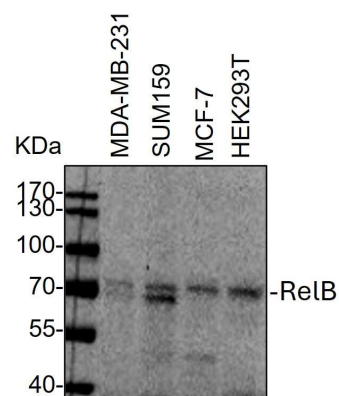
Western Blot: RelB Antibody [NBP2-20123] - Non-transfected (-) and transfected (+) 293T whole cell extracts (30 ug) were separated by 7.5% SDS-PAGE, and the membrane was blotted with RelB antibody diluted at 1:5000. The HRP-conjugated anti-rabbit IgG antibody (NBP2-19301) was used to detect the primary antibody.



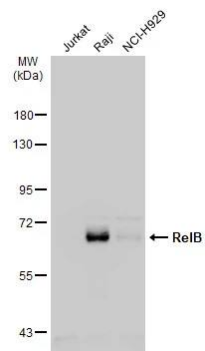
Immunoprecipitation: RelB Antibody [NBP2-20123] - HeLa whole cell lysate/extract A. Control with 2 ug of preimmune rabbit IgG B. Immunoprecipitation of RelB protein by 2 ug of RelB antibody 7.5% SDS-PAGE The immunoprecipitated RelB protein was detected by RelB antibody (diluted at 1:1000. EasyBlot anti-rabbit IgG was used as a secondary reagent.



Western Blot: Rabbit Polyclonal RelB Antibody [NBP2-20123] - Whole cell lysates from MDA-MB-231, SUM159, MCF-7 and HEK293T cells were loaded with 50 ug/lane. 10% SDS-PAGE. RRS1 Antibody (NBP2-49323) was used for primary antibody: 1:1000, 4C, overnight. Image from a verified customer review.



Western Blot: RelB Antibody [NBP2-20123] - Various whole cell extracts (30 ug) were separated by 7.5% SDS-PAGE, and the membrane was blotted with RelB antibody (NBP2-20123) diluted at 1:1000. The HRP-conjugated anti-rabbit IgG antibody was used to detect the primary antibody.



Publications

Samanta D, Huang T, Shah R et al. BIRC2 Expression Impairs Anti-Cancer Immunity and Immunotherapy Efficacy Cell Rep [PMID: 32846130] (WB, Mouse)

Details:

Citation using the PE format of this antibody.



Novus Biologicals USA

10730 E. Briarwood Avenue
Centennial, CO 80112
USA
Phone: 303.730.1950
Toll Free: 1.888.506.6887
Fax: 303.730.1966
nb-customerservice@bio-techne.com

Bio-Techne Canada

21 Canmotor Ave
Toronto, ON M8Z 4E6
Canada
Phone: 905.827.6400
Toll Free: 855.668.8722
Fax: 905.827.6402
canada.inquires@bio-techne.com

Bio-Techne Ltd

19 Barton Lane
Abingdon Science Park
Abingdon, OX14 3NB, United Kingdom
Phone: (44) (0) 1235 529449
Free Phone: 0800 37 34 15
Fax: (44) (0) 1235 533420
info.EMEA@bio-techne.com

General Contact Information

www.novusbio.com
Technical Support: nb-technical@bio-techne.com
Orders: nb-customerservice@bio-techne.com
General: novus@novusbio.com

Products Related to NBP2-20123

HAF008	Goat anti-Rabbit IgG Secondary Antibody [HRP]
NB7160	Goat anti-Rabbit IgG (H+L) Secondary Antibody [HRP]
NBP2-24891	Rabbit IgG Isotype Control
H00005971-P01-10ug	Recombinant Human RelB GST (N-Term) Protein

Limitations

This product is for research use only and is not approved for use in humans or in clinical diagnosis. Primary Antibodies are guaranteed for 1 year from date of receipt.

For more information on our 100% guarantee, please visit www.novusbio.com/guarantee

Earn gift cards/discounts by submitting a review: www.novusbio.com/reviews/submit/NBP2-20123

Earn gift cards/discounts by submitting a publication using this product:
www.novusbio.com/publications

