

Product Datasheet

RBPMS Antibody NBP2-20112

Unit Size: 0.1 ml

Aliquot and store at -20C or -80C. Avoid freeze-thaw cycles.

www.novusbio.com



technical@novusbio.com

Reviews: 1 Publications: 22

Protocols, Publications, Related Products, Reviews, Research Tools and Images at:
www.novusbio.com/NBP2-20112

Updated 1/27/2025 v.20.1

**Earn rewards for product
reviews and publications.**

Submit a publication at www.novusbio.com/publications

Submit a review at www.novusbio.com/reviews/destination/NBP2-20112



NBP2-20112

RBPMS Antibody

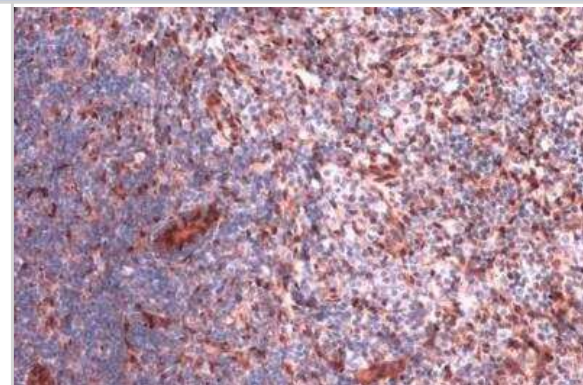
Product Information	
Unit Size	0.1 ml
Concentration	Concentrations vary lot to lot. See vial label for concentration. If unlisted please contact technical services.
Storage	Aliquot and store at -20C or -80C. Avoid freeze-thaw cycles.
Clonality	Polyclonal
Preservative	0.025% Proclin 300
Isotype	IgG
Purity	Antigen Affinity-purified
Buffer	PBS, 1% BSA, 20% Glycerol
Target Molecular Weight	22 kDa

Product Description	
Host	Rabbit
Gene ID	11030
Gene Symbol	RBPMS
Species	Human, Mouse, Rat, Monkey
Immunogen	Recombinant protein encompassing a sequence within the center region of human RBPMS. The exact sequence is proprietary.

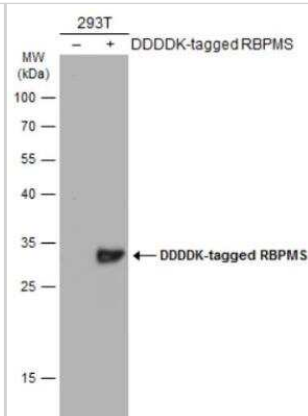
Product Application Details	
Applications	Western Blot, Flow Cytometry, Immunocytochemistry/ Immunofluorescence, Immunohistochemistry, Immunohistochemistry-Paraffin, Immunohistochemistry Whole-Mount
Recommended Dilutions	Western Blot 1:500-1:3000, Flow Cytometry Validated from a verified customer review., Immunohistochemistry 1:100-1:1000, Immunocytochemistry/ Immunofluorescence 1:100-1:1000, Immunohistochemistry-Paraffin 1:100-1:1000, Immunohistochemistry Whole-Mount Assay dependent

Images

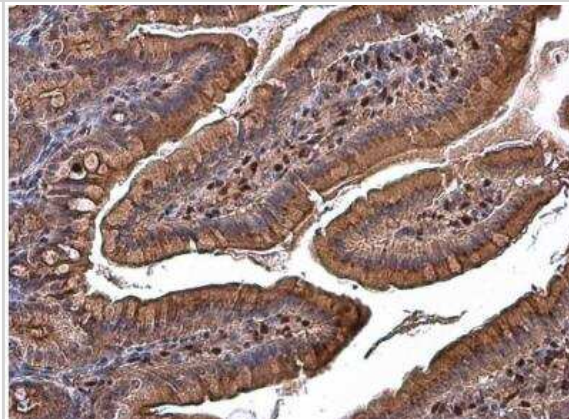
Immunohistochemistry-Paraffin: RBPMS Antibody [NBP2-20112] - Rat lymph node. RBPMS stained by RBPMS antibody diluted at 1:2000. Antigen Retrieval: Citrate buffer, pH 6.0, 15 min.



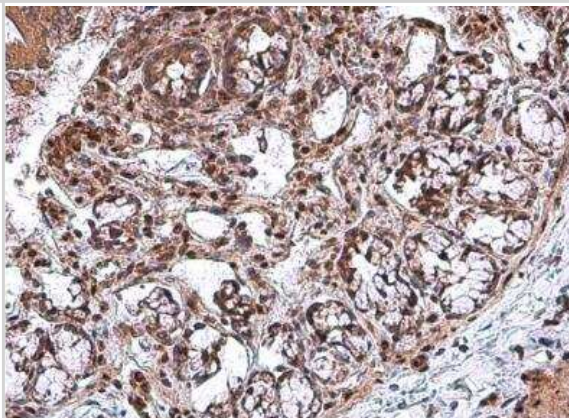
Western Blot: RBPMS Antibody [NBP2-20112] - Non-transfected (-) and transfected (+) 293T whole cell extracts (30 ug) were separated by 12% SDS-PAGE, and the membrane was blotted with RBPMS antibody diluted at 1:1000. The HRP-conjugated anti-rabbit IgG antibody (NBP2-19301) was used to detect the primary antibody.



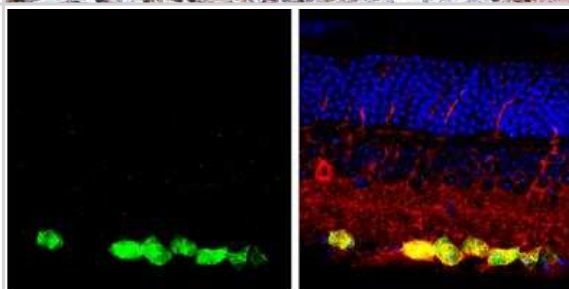
Immunohistochemistry-Paraffin: RBPMS Antibody [NBP2-20112] - Rat duodenum. RBPMS antibody diluted at 1:500. Antigen Retrieval: Citrate buffer, pH 6.0, 15 min.



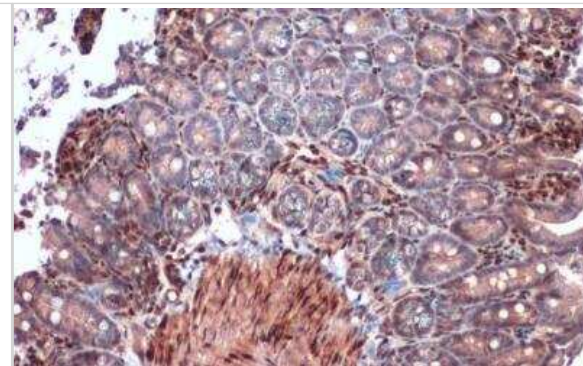
Immunohistochemistry-Paraffin: RBPMS Antibody [NBP2-20112] - Rat colon. RBPMS antibody diluted at 1:500. Antigen Retrieval: Citrate buffer, pH 6.0, 15 min.



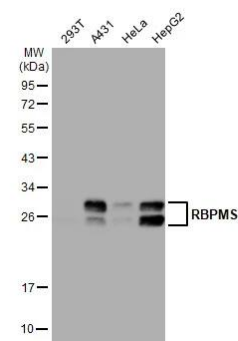
Immunohistochemistry-Paraffin: RBPMS Antibody [NBP2-20112] - Paraffin-embedded mouse retina. Green: RBPMS protein stained by RBPMS antibody diluted at 1:250. Red: beta Tubulin 3/ Tuj1, a marker, stained by beta Tubulin 3/ Tuj1 antibody [1338] diluted at 1:500. Blue: Fluoroshield with DAPI.



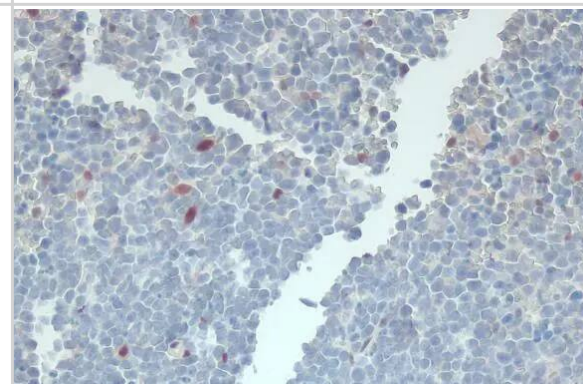
Immunohistochemistry-Paraffin: RBPMS Antibody [NBP2-20112] - Mouse intestine. RBPMS stained by RBPMS antibody diluted at 1:2000. Antigen Retrieval: Citrate buffer, pH 6.0, 15 min.



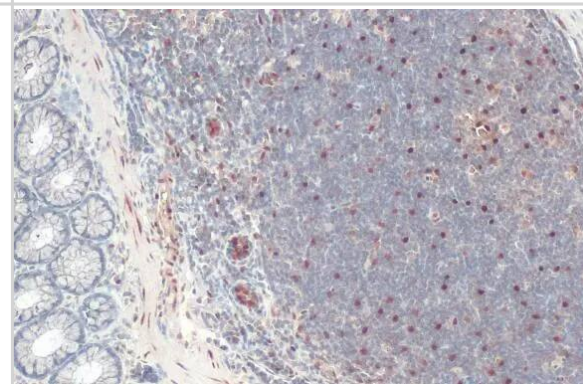
Western Blot: RBPMS Antibody [NBP2-20112] - Various whole cell extracts (30 ug) were separated by 12% SDS-PAGE, and the membrane was blotted with RBPMS antibody (NBP2-20112) diluted at 1:500. The HRP-conjugated anti-rabbit IgG antibody was used to detect the primary antibody.



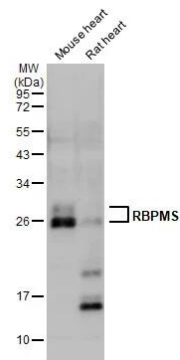
Immunohistochemistry-Paraffin: RBPMS Antibody [NBP2-20112] - RBPMS antibody detects RBPMS protein at cytoplasm and nucleus by immunohistochemical analysis. Sample: Paraffin-embedded mouse lymph node. RBPMS stained by RBPMS antibody (NBP2-20112) diluted at 1:500. Antigen Retrieval: Citrate buffer, pH 6.0, 15 min



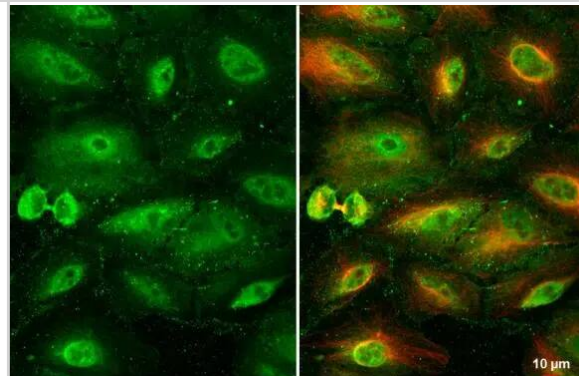
Immunohistochemistry-Paraffin: RBPMS Antibody [NBP2-20112] - RBPMS antibody detects RBPMS protein at cytoplasm and nucleus by immunohistochemical analysis. Sample: Paraffin-embedded rat colon. RBPMS stained by RBPMS antibody (NBP2-20112) diluted at 1:500. Antigen Retrieval: Citrate buffer, pH 6.0, 15 min



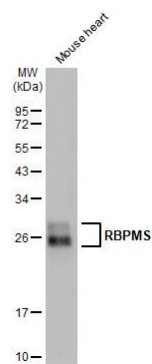
Western Blot: RBPMS Antibody [NBP2-20112] - Various tissue extracts (50 ug) were separated by 12% SDS-PAGE, and the membrane was blotted with RBPMS antibody (NBP2-20112) diluted at 1:3000. The HRP-conjugated anti-rabbit IgG antibody was used to detect the primary antibody.



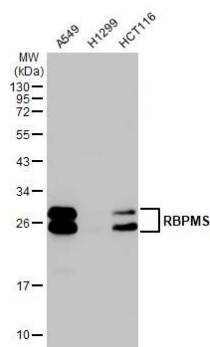
Immunocytochemistry/ Immunofluorescence: RBPMS Antibody [NBP2-20112] - RBPMS antibody detects RBPMS protein at cytoplasm and nucleus by immunofluorescent analysis.
 Sample: A549 cells were fixed in 4% paraformaldehyde at RT for 15 min.
 Green: RBPMS stained by RBPMS antibody (NBP2-20112) diluted at 1:500.
 Red: alpha Tubulin, a cytoskeleton marker, stained by alpha Tubulin antibody [GT114] diluted at 1:1000.



Western Blot: RBPMS Antibody [NBP2-20112] - Mouse tissue extract (50 ug) was separated by 12% SDS-PAGE, and the membrane was blotted with RBPMS antibody (NBP2-20112) diluted at 1:3000. The HRP-conjugated anti-rabbit IgG antibody was used to detect the primary antibody.



Western Blot: RBPMS Antibody [NBP2-20112] - Various whole cell extracts (30 ug) were separated by 12% SDS-PAGE, and the membrane was blotted with RBPMS antibody (NBP2-20112) diluted at 1:500. The HRP-conjugated anti-rabbit IgG antibody was used to detect the primary antibody.



Publications

Warwick AM, Bomze HM, Wang L et al. Hypoxia-mediated rescue of retinal ganglion cells deficient in mitochondrial complex I is independent of the hypoxia-inducible factor pathway *Scientific Reports* 2024-10-15 [PMID: 39406814]

Xinyu Gu, Xun Chen, Xuan Zhang, Keli Liu, Jing-Jing Li, Wenyu Lv, Lei Zeng, Mingjuan Wu, Weibin Zhou, Weifa Wang, Shunhua Shi, Yicheng Deng, Yunhua Li, Xinbo Gao, Rong Ju, Alexandre Dubrac, Xialin Liu, Feng Zhang Macrophage-induced integrin signaling promotes Schlemm's canal formation to prevent intraocular hypertension and glaucomatous optic neuropathy. *Cell reports* 2024-03-04 [PMID: 38367239]

Soo-Ho Choi, Keun-Young Kim, Guy A. Perkins, Sébastien Phan, Genea Edwards, Yining Xia, Jungsu Kim, Dorota Skowronska-Krawczyk, Robert N. Weinreb, Mark H. Ellisman, Yury I. Miller, Won-Kyu Ju AIBP protects retinal ganglion cells against neuroinflammation and mitochondrial dysfunction in glaucomatous neurodegeneration *Redox Biology* 2020-08-27 [PMID: 32896719]

Meng Xuan, Wei Wang, Gabriella Bulloch, Jian Zhang, Jason Ha, Qilin Wang, Juanjuan Wang, Xingyan Lin, Mingguang He Impact of Acute Ocular Hypertension on Retinal Ganglion Cell Loss in Mice *Translational Vision Science & Technology* 2024-03-20 [PMID: 38506800]

D Chen, C Peng, XM Ding, Y Wu, CJ Zeng, L Xu, WY Guo Interleukin-4 promotes microglial polarization toward a neuroprotective phenotype after retinal ischemia/reperfusion injury *Oncogene*, 2022-12-01;17(12):2755-2760. 2022-12-01 [PMID: 35662225]

Yifei Li, Dongchang Xiao, Haiqiao Chen, X.F. Steven Zheng, Mengqing Xiang Maf1 controls retinal neuron number by both RNA Pol III- and Pol II-dependent mechanisms *iScience* 2023-11-23 [PMID: 38089586]

Liang Q, Cheng X, Wang J et al. A multi-omics atlas of the human retina at single-cell resolution *Cell Genomics* 2023-06-14 [PMID: 37388908] (Immunohistochemistry-Frozen, Block/Neutralize, Immunocytochemistry/Immunofluorescence)

Tribble JR, Otmani A, Kokkali E et al. Retinal Ganglion Cell Degeneration in a Rat Magnetic Bead Model of Ocular Hypertensive Glaucoma *Translational Vision Science & Technology* 2021-01-12 [PMID: 33510960] (Immunocytochemistry/ Immunofluorescence)

Want A, Nan X, Kokkali E et al. Brain-derived neurotrophic factor released from blood platelets prevents dendritic atrophy of lesioned adult central nervous system neurons *Brain communications* 2023-03-02 [PMID: 36970044] (IHC, Mouse)

Liang Q, Cheng X, Wang J et al. A multi-omics atlas of the human retina at single-cell resolution *Cell Genomics* 2023-04-01 (Immunohistochemistry, Human)

Warwick AM, Bomze HM, Wang L et al. Continuous Hypoxia Reduces Retinal Ganglion Cell Degeneration in a Mouse Model of Mitochondrial Optic Neuropathy *Investigative ophthalmology & visual science* 2022-12-01 [PMID: 36538003] (IHC, Mouse)

Wang Q, Lin X, Wang J An optimized method for retrograde labelling and quantification of rabbit retinal ganglion cells *Experimental eye research* 2023-02-22 [PMID: 36822495] (IF/ICC)

More publications at <http://www.novusbio.com/NBP2-20112>



Novus Biologicals USA

10730 E. Briarwood Avenue
Centennial, CO 80112
USA
Phone: 303.730.1950
Toll Free: 1.888.506.6887
Fax: 303.730.1966
nb-customerservice@bio-techne.com

Bio-Techne Canada

21 Canmotor Ave
Toronto, ON M8Z 4E6
Canada
Phone: 905.827.6400
Toll Free: 855.668.8722
Fax: 905.827.6402
canada.inquires@bio-techne.com

Bio-Techne Ltd

19 Barton Lane
Abingdon Science Park
Abingdon, OX14 3NB, United Kingdom
Phone: (44) (0) 1235 529449
Free Phone: 0800 37 34 15
Fax: (44) (0) 1235 533420
info.EMEA@bio-techne.com

General Contact Information

www.novusbio.com
Technical Support: nb-technical@bio-techne.com
Orders: nb-customerservice@bio-techne.com
General: novus@novusbio.com

Products Related to NBP2-20112

HAF008	Goat anti-Rabbit IgG Secondary Antibody [HRP]
NB7160	Goat anti-Rabbit IgG (H+L) Secondary Antibody [HRP]
NBP2-24891	Rabbit IgG Isotype Control
H00011030-P01-10ug	Recombinant Human RBPMS GST (N-Term) Protein

Limitations

This product is for research use only and is not approved for use in humans or in clinical diagnosis. Primary Antibodies are guaranteed for 1 year from date of receipt.

For more information on our 100% guarantee, please visit www.novusbio.com/guarantee

Earn gift cards/discounts by submitting a review: www.novusbio.com/reviews/submit/NBP2-20112

Earn gift cards/discounts by submitting a publication using this product:
www.novusbio.com/publications

