

Product Datasheet

PPP2R1A Antibody - BSA Free NBP2-19907

Unit Size: 0.1 ml

Aliquot and store at -20C or -80C. Avoid freeze-thaw cycles.

www.novusbio.com



technical@novusbio.com

Reviews: 1

Protocols, Publications, Related Products, Reviews, Research Tools and Images at:
www.novusbio.com/NBP2-19907

Updated 2/23/2025 v.20.1

**Earn rewards for product
reviews and publications.**

Submit a publication at www.novusbio.com/publications

Submit a review at www.novusbio.com/reviews/destination/NBP2-19907



NBP2-19907

PPP2R1A Antibody - BSA Free

Product Information

Unit Size	0.1 ml
Concentration	Concentrations vary lot to lot. See vial label for concentration. If unlisted please contact technical services.
Storage	Aliquot and store at -20C or -80C. Avoid freeze-thaw cycles.
Clonality	Polyclonal
Preservative	0.025% Proclin 300
Isotype	IgG
Purity	Antigen Affinity-purified
Buffer	PBS (pH 7), 20% Glycerol
Target Molecular Weight	65 kDa

Product Description

Host	Rabbit
Gene ID	5518
Gene Symbol	PPP2R1A
Species	Human, Mouse
Reactivity Notes	Zebrafish (88%), Xenopus laevis (95%).
Immunogen	Recombinant protein encompassing a sequence within the center region of human PPP2R1A. The exact sequence is proprietary.

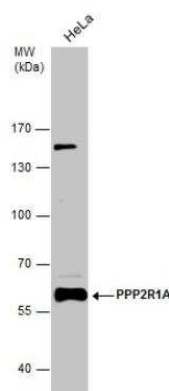
Product Application Details

Applications	Western Blot, Immunocytochemistry/ Immunofluorescence, Immunohistochemistry, Immunohistochemistry-Paraffin, Immunoprecipitation
Recommended Dilutions	Western Blot 1:500-1:10000, Immunohistochemistry 1:100-1:2500, Immunocytochemistry/ Immunofluorescence 1:100-1:1000, Immunoprecipitation, Immunohistochemistry-Paraffin 1:100-1:2500
Application Notes	Immunoprecipitation Assay-dependent dilution

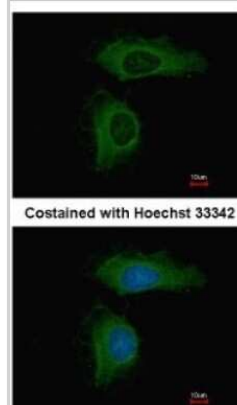


Images

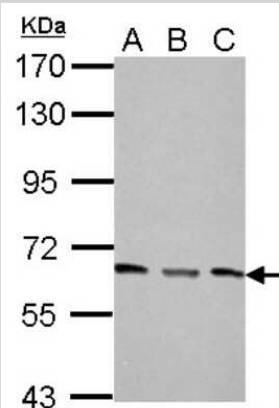
Western Blot: PPP2R1A Antibody [NBP2-19907] - Whole cell extract (30 ug) was separated by 7.5% SDS-PAGE, and the membrane was blotted with PPP2R1A antibody diluted at 1:1000.



Immunocytochemistry/Immunofluorescence: PPP2R1A Antibody [NBP2-19907] - Immunofluorescence analysis of methanol-fixed HeLa, using antibody at 1:500 dilution.

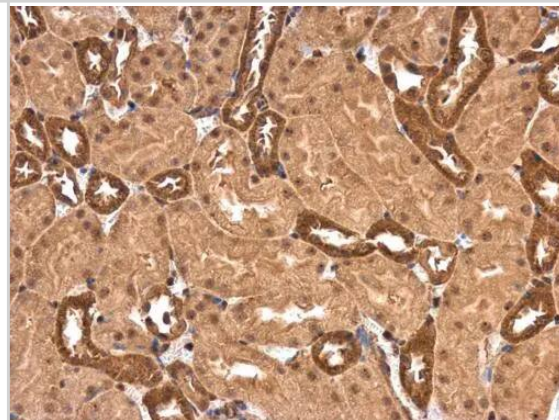


Western Blot: PPP2R1A Antibody [NBP2-19907] - Sample (30 ug of whole cell lysate) A: NIH-3T3 B: JC C: BCL-1 7.5% SDS PAGE gel, diluted at 1:5000.



Immunohistochemistry-Paraffin: PPP2R1A Antibody [NBP2-19907] - PPP2R1A antibody detects PPP2R1A protein at cytoplasm in mouse kidney by immunohistochemical analysis.
Sample: Paraffin-embedded mouse kidney.
PPP2R1A antibody (NBP2-19907) diluted at 1:2500.

Antigen Retrieval: Citrate buffer, pH 6.0, 15 min





Novus Biologicals USA

10730 E. Briarwood Avenue
Centennial, CO 80112
USA
Phone: 303.730.1950
Toll Free: 1.888.506.6887
Fax: 303.730.1966
nb-customerservice@bio-techne.com

Bio-Techne Canada

21 Canmotor Ave
Toronto, ON M8Z 4E6
Canada
Phone: 905.827.6400
Toll Free: 855.668.8722
Fax: 905.827.6402
canada.inquires@bio-techne.com

Bio-Techne Ltd

19 Barton Lane
Abingdon Science Park
Abingdon, OX14 3NB, United Kingdom
Phone: (44) (0) 1235 529449
Free Phone: 0800 37 34 15
Fax: (44) (0) 1235 533420
info.EMEA@bio-techne.com

General Contact Information

www.novusbio.com
Technical Support: nb-technical@bio-techne.com
Orders: nb-customerservice@bio-techne.com
General: novus@novusbio.com

Products Related to NBP2-19907

HAF008	Goat anti-Rabbit IgG Secondary Antibody [HRP]
NB7160	Goat anti-Rabbit IgG (H+L) Secondary Antibody [HRP]
NBP2-24891	Rabbit IgG Isotype Control
NBP2-52162-0.1mg	Recombinant Human PPP2R1A His Protein

Limitations

This product is for research use only and is not approved for use in humans or in clinical diagnosis. Primary Antibodies are guaranteed for 1 year from date of receipt.

For more information on our 100% guarantee, please visit www.novusbio.com/guarantee

Earn gift cards/discounts by submitting a review: www.novusbio.com/reviews/submit/NBP2-19907

Earn gift cards/discounts by submitting a publication using this product:
www.novusbio.com/publications

