

# Product Datasheet

## PP2A alpha Antibody NBP2-19896

Unit Size: 0.1 ml

Aliquot and store at -20C or -80C. Avoid freeze-thaw cycles.

[www.novusbio.com](http://www.novusbio.com)



[technical@novusbio.com](mailto:technical@novusbio.com)

Protocols, Publications, Related Products, Reviews, Research Tools and Images at:  
[www.novusbio.com/NBP2-19896](http://www.novusbio.com/NBP2-19896)

Updated 10/23/2024 v.20.1

Earn rewards for product  
reviews and publications.

Submit a publication at [www.novusbio.com/publications](http://www.novusbio.com/publications)

Submit a review at [www.novusbio.com/reviews/destination/NBP2-19896](http://www.novusbio.com/reviews/destination/NBP2-19896)



**NBP2-19896**

PP2A alpha Antibody

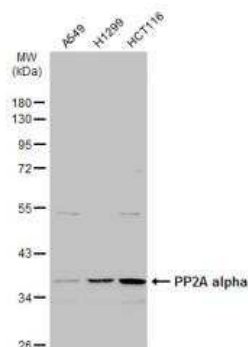
Product Information	
Unit Size	0.1 ml
Concentration	Concentrations vary lot to lot. See vial label for concentration. If unlisted please contact technical services.
Storage	Aliquot and store at -20C or -80C. Avoid freeze-thaw cycles.
Clonality	Polyclonal
Preservative	0.025% Proclin 300
Isotype	IgG
Purity	Antigen Affinity-purified
Buffer	PBS (pH 7), 20% Glycerol, 1% BSA
Target Molecular Weight	36 kDa

Product Description	
Host	Rabbit
Gene ID	5515
Gene Symbol	PPP2CA
Species	Human, Mouse, Rat
Reactivity Notes	Immunogen displays the following percentage of sequence identity for non-tested species: <i>Xenopus laevis</i> (100%), <i>Xenopus tropicalis</i> (100%).
Immunogen	Recombinant protein encompassing a sequence within the center region of human PP2A alpha. The exact sequence is proprietary.

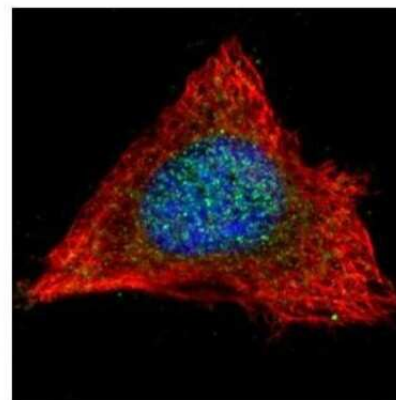
Product Application Details	
Applications	Western Blot, Immunocytochemistry/ Immunofluorescence, Immunohistochemistry, Immunohistochemistry-Paraffin
Recommended Dilutions	Western Blot 1:500-1:3000, Immunohistochemistry 10 - 1:500, Immunocytochemistry/ Immunofluorescence 1:100-1:1000, Immunohistochemistry-Paraffin 1:100-1:1000

**Images**

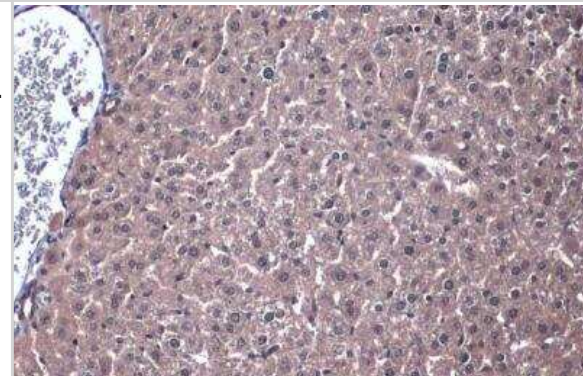
Western Blot: PP2A alpha Antibody [NBP2-19896] - Various whole cell extracts (30 ug) were separated by 10% SDS-PAGE, and the membrane was blotted with PP2A alpha antibody diluted at 1:1000. HRP-conjugated anti-rabbit IgG antibody was used to detect the primary antibody.



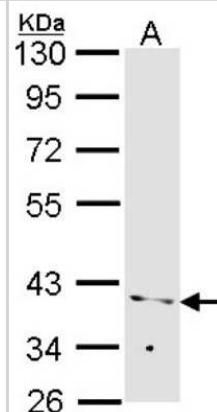
Immunocytochemistry/Immunofluorescence: PP2A alpha Antibody [NBP2-19896] - Confocal immunofluorescence analysis of methanol-fixed HeLa, using PP2A alpha antibody (Green) at 1:500 dilution. Alpha-tubulin filaments are labeled with Alpha-tubulin antibody (Red) at 1:2000.



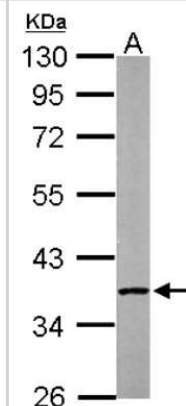
Immunohistochemistry-Paraffin: PP2A alpha Antibody [NBP2-19896] - PP2A alpha antibody detects PP2A alpha protein at cytoplasm by immunohistochemical analysis. Sample: Paraffin-embedded mouse liver. PP2A alpha stained by PP2A alpha antibody diluted at 1:1000. Antigen Retrieval: Citrate buffer, pH 6.0, 15 min



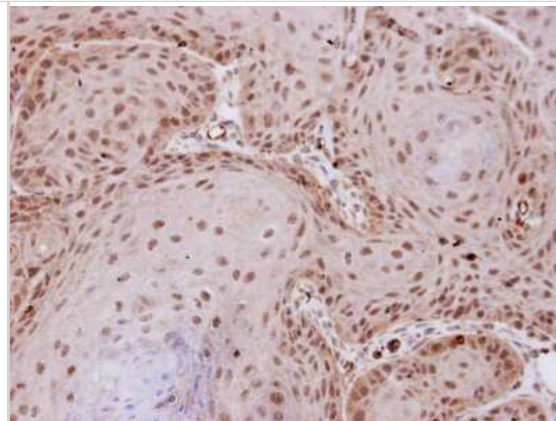
Western Blot: PP2A alpha Antibody [NBP2-19896] - Sample (30 ug of whole cell lysate) A: Molt-4 10% SDS PAGE gel, diluted at 1:1000.



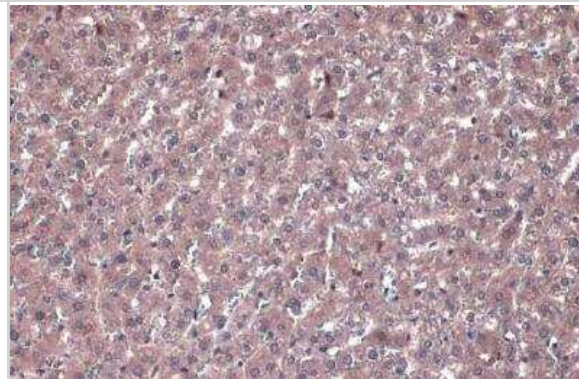
Western Blot: PP2A alpha Antibody [NBP2-19896] - Sample (50 ug of whole cell lysate) A: Mouse Brain, 10% SDS PAGE gel, diluted at 1:1000.



Immunohistochemistry-Paraffin: PP2A alpha Antibody [NBP2-19896] - Immunohistochemical analysis of paraffin-embedded Cal27 xenograft, using antibody at 1:100 dilution.



Immunohistochemistry-Paraffin: PP2A alpha Antibody [NBP2-19896] - PP2A alpha antibody detects PP2A alpha protein at cytoplasm by immunohistochemical analysis. Sample: Paraffin-embedded rat liver. PP2A alpha stained by PP2A alpha antibody diluted at 1:1000. Antigen Retrieval: Citrate buffer, pH 6.0, 15 min





### **Novus Biologicals USA**

10730 E. Briarwood Avenue  
Centennial, CO 80112  
USA  
Phone: 303.730.1950  
Toll Free: 1.888.506.6887  
Fax: 303.730.1966  
nb-customerservice@bio-techne.com

### **Bio-Techne Canada**

21 Canmotor Ave  
Toronto, ON M8Z 4E6  
Canada  
Phone: 905.827.6400  
Toll Free: 855.668.8722  
Fax: 905.827.6402  
canada.inquires@bio-techne.com

### **Bio-Techne Ltd**

19 Barton Lane  
Abingdon Science Park  
Abingdon, OX14 3NB, United Kingdom  
Phone: (44) (0) 1235 529449  
Free Phone: 0800 37 34 15  
Fax: (44) (0) 1235 533420  
info.EMEA@bio-techne.com

### **General Contact Information**

www.novusbio.com  
Technical Support: nb-technical@bio-techne.com  
Orders: nb-customerservice@bio-techne.com  
General: novus@novusbio.com

### **Products Related to NBP2-19896**

---

HAF008	Goat anti-Rabbit IgG Secondary Antibody [HRP]
NB7160	Goat anti-Rabbit IgG (H+L) Secondary Antibody [HRP]
NBP2-24891	Rabbit IgG Isotype Control
H00005515-P01-10ug	Recombinant Human PP2A alpha GST (N-Term) Protein

---

### **Limitations**

This product is for research use only and is not approved for use in humans or in clinical diagnosis. Primary Antibodies are guaranteed for 1 year from date of receipt.

For more information on our 100% guarantee, please visit [www.novusbio.com/guarantee](http://www.novusbio.com/guarantee)

Earn gift cards/discounts by submitting a review: [www.novusbio.com/reviews/submit/NBP2-19896](http://www.novusbio.com/reviews/submit/NBP2-19896)

Earn gift cards/discounts by submitting a publication using this product:  
[www.novusbio.com/publications](http://www.novusbio.com/publications)

