

Product Datasheet

Plasminogen Antibody NBP2-19859

Unit Size: 0.1 ml

Aliquot and store at -20C or -80C. Avoid freeze-thaw cycles.

www.novusbio.com



technical@novusbio.com

Publications: 1

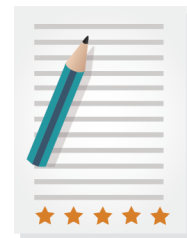
Protocols, Publications, Related Products, Reviews, Research Tools and Images at:
www.novusbio.com/NBP2-19859

Updated 10/23/2024 v.20.1

Earn rewards for product
reviews and publications.

Submit a publication at www.novusbio.com/publications

Submit a review at www.novusbio.com/reviews/destination/NBP2-19859



NBP2-19859

Plasminogen Antibody

Product Information

Unit Size	0.1 ml
Concentration	Concentrations vary lot to lot. See vial label for concentration. If unlisted please contact technical services.
Storage	Aliquot and store at -20C or -80C. Avoid freeze-thaw cycles.
Clonality	Polyclonal
Preservative	0.025% Proclin 300
Isotype	IgG
Purity	Antigen Affinity-purified
Buffer	PBS (pH 7), 20% Glycerol, 1% BSA
Target Molecular Weight	91 kDa

Product Description

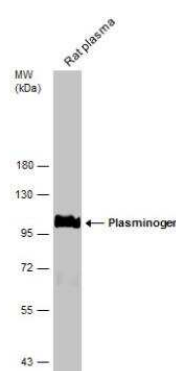
Host	Rabbit
Gene ID	5340
Gene Symbol	PLG
Species	Human, Mouse, Rat
Reactivity Notes	Bovine (81%), Dog (81%), Pig (80%).
Immunogen	Recombinant protein encompassing a sequence within the center region of human Plasminogen. The exact sequence is proprietary.

Product Application Details

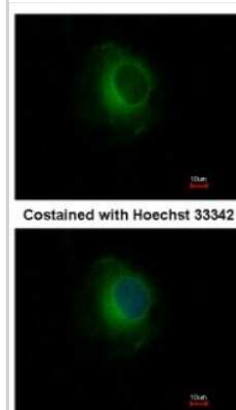
Applications	Western Blot, Immunocytochemistry/ Immunofluorescence, Immunohistochemistry, Immunohistochemistry-Paraffin
Recommended Dilutions	Western Blot 1:500-1:3000, Immunohistochemistry 1:100-1:1000, Immunocytochemistry/ Immunofluorescence 1:100-1:1000, Immunohistochemistry-Paraffin 1:100-1:1000

Images

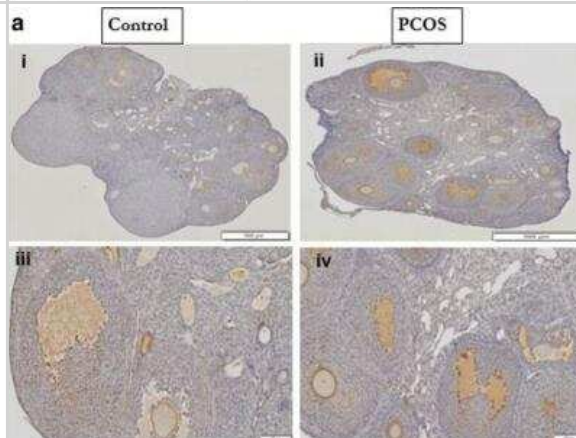
Western Blot: Plasminogen Antibody [NBP2-19859] - Rat tissue extract (50ug) was separated by 7.5% SDS-PAGE, and the membrane was blotted with Plasminogen antibody diluted at 1:500.



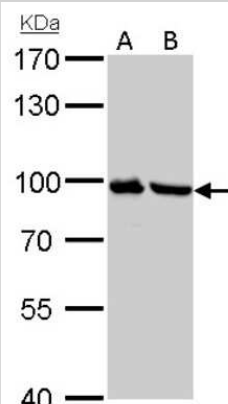
Immunocytochemistry/Immunofluorescence: Plasminogen Antibody [NBP2-19859] - Immunofluorescence analysis of methanol-fixed HeLa, using antibody at 1:500 dilution.



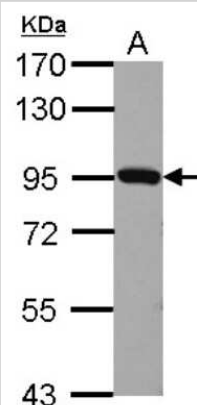
Immunohistochemistry: Plasminogen Antibody [NBP2-19859] - Expression of plasminogen/plasmin (NBP2-19859) in normal and PCOS mouse ovaries. Representative histological images are from normal (control) (Ai, Aiii) or PCOS ovaries (Aii, Aiv) stained with an anti-plasminogen/plasmin antibody. The scale bar represents 500 μ m for Ai, Aii and 100 μ m for Aiii, Aiv. Right: Top: Negative control for plasminogen/plasmin on mouse liver; Middle: Graphical representation comparing the percentage of ovarian staining (Area Fraction ROI) for plasminogen/plasmin and plasminogen alone between normal and PCOS ovaries for 6 replicates of each experimental group (mean \pm SD) and Bottom: Negative control for plasminogen alone on mouse liver Image collected and cropped by CiteAb from the following publication (<https://rbej.biomedcentral.com/articles/10.1186/s12958-019-0472-0>) licensed under a CC-BY license.



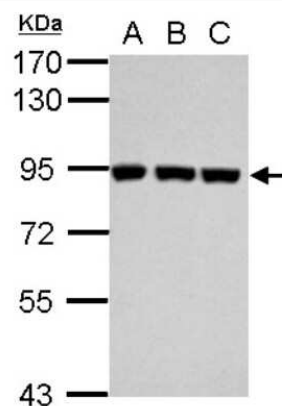
Western Blot: Plasminogen Antibody [NBP2-19859] - Plasminogen antibody detects PLG protein by Western blot analysis. A. 30 μ g PC-12 whole cell lysate/extract B. 30 μ g Rat2 whole cell lysate/extract. 7.5 % SDS-PAGE. Plasminogen antibody dilution: 1:1000.



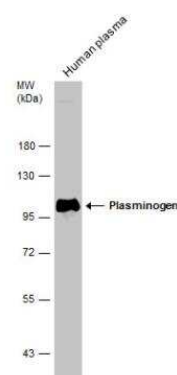
Western Blot: Plasminogen Antibody [NBP2-19859] - Sample (30 μ g of whole cell lysate) A: BCL-1 7.5 % SDS PAGE gel, diluted at 1:1000.



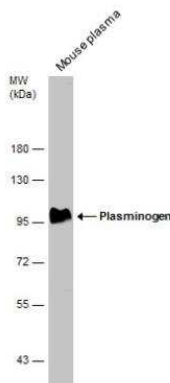
Western Blot: Plasminogen Antibody [NBP2-19859] - Sample (30 ug of whole cell lysate) A: Jurkat B: Raji C: K562 7. 5% SDS PAGE gel, diluted at 1:1000.



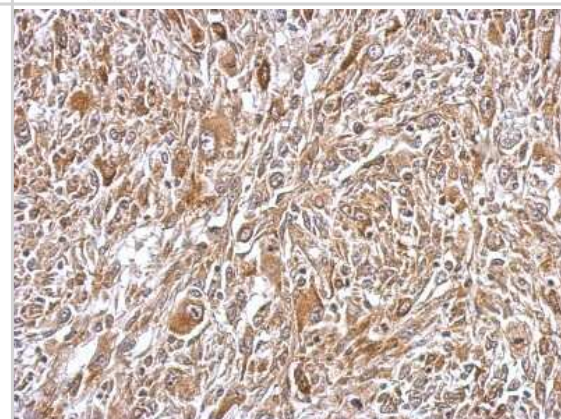
Western Blot: Plasminogen Antibody [NBP2-19859] - Human tissue extract (30 ug) was separated by 7.5% SDS-PAGE, and the membrane was blotted with Plasminogen antibody diluted at 1:500.



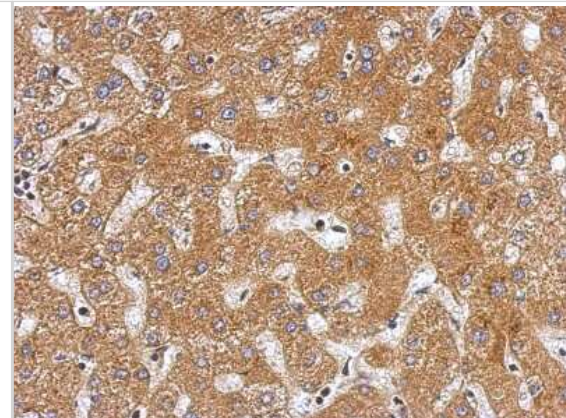
Western Blot: Plasminogen Antibody [NBP2-19859] - Mouse tissue extract (50 ug) was separated by 7.5% SDS-PAGE, and the membrane was blotted with Plasminogen antibody diluted at 1:500.



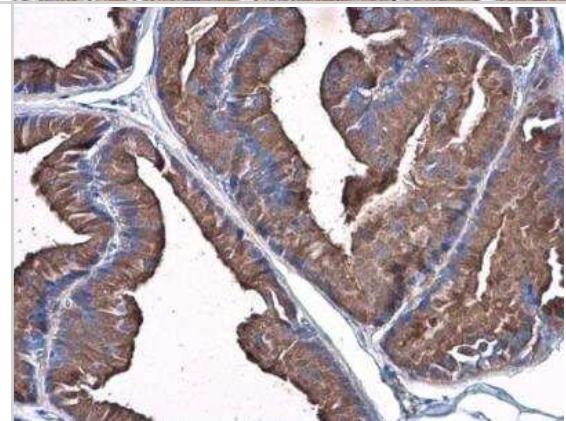
Immunohistochemistry-Paraffin: Plasminogen Antibody [NBP2-19859] - Immunohistochemical analysis of paraffin-embedded C2C12 xenograft, using antibody at 1:500 dilution.



Immunohistochemistry-Paraffin: Plasminogen Antibody [NBP2-19859] - Immunohistochemical analysis of paraffin-embedded Hepatoma, using antibody at 1:500 dilution.



Immunohistochemistry-Paraffin: Plasminogen Antibody [NBP2-19859] - Paraffin-embedded rat prostate Plasminogen antibody diluted at 1:500.



Publications

Burchall GF, Pouniotis DS, Teede HJ et al. Expression of the plasminogen system in the physiological mouse ovary and in the pathological polycystic ovary syndrome (PCOS) state Reprod. Biol. Endocrinol. 2019-03-16 [PMID: 30878040] (IHC-P, Mouse)



Novus Biologicals USA

10730 E. Briarwood Avenue
Centennial, CO 80112
USA
Phone: 303.730.1950
Toll Free: 1.888.506.6887
Fax: 303.730.1966
nb-customerservice@bio-techne.com

Bio-Techne Canada

21 Canmotor Ave
Toronto, ON M8Z 4E6
Canada
Phone: 905.827.6400
Toll Free: 855.668.8722
Fax: 905.827.6402
canada.inquires@bio-techne.com

Bio-Techne Ltd

19 Barton Lane
Abingdon Science Park
Abingdon, OX14 3NB, United Kingdom
Phone: (44) (0) 1235 529449
Free Phone: 0800 37 34 15
Fax: (44) (0) 1235 533420
info.EMEA@bio-techne.com

General Contact Information

www.novusbio.com
Technical Support: nb-technical@bio-
techne.com
Orders: nb-customerservice@bio-techne.com
General: novus@novusbio.com

Products Related to NBP2-19859

HAF008	Goat anti-Rabbit IgG Secondary Antibody [HRP]
NB7160	Goat anti-Rabbit IgG (H+L) Secondary Antibody [HRP]
NBP2-24891	Rabbit IgG Isotype Control
NBP1-86015PEP	Plasminogen Recombinant Protein Antigen

Limitations

This product is for research use only and is not approved for use in humans or in clinical diagnosis. Primary Antibodies are guaranteed for 1 year from date of receipt.

For more information on our 100% guarantee, please visit www.novusbio.com/guarantee

Earn gift cards/discounts by submitting a review: www.novusbio.com/reviews/submit/NBP2-19859

Earn gift cards/discounts by submitting a publication using this product:
www.novusbio.com/publications

