

# Product Datasheet

## Nrf1 Antibody - BSA Free NBP2-19586

Unit Size: 0.1 ml

Aliquot and store at -20C or -80C. Avoid freeze-thaw cycles.

[www.novusbio.com](http://www.novusbio.com)



[technical@novusbio.com](mailto:technical@novusbio.com)

### Publications: 1

Protocols, Publications, Related Products, Reviews, Research Tools and Images at:  
[www.novusbio.com/NBP2-19586](http://www.novusbio.com/NBP2-19586)

Updated 2/23/2025 v.20.1

Earn rewards for product  
reviews and publications.

Submit a publication at [www.novusbio.com/publications](http://www.novusbio.com/publications)

Submit a review at [www.novusbio.com/reviews/destination/NBP2-19586](http://www.novusbio.com/reviews/destination/NBP2-19586)



**NBP2-19586**

Nrf1 Antibody - BSA Free

**Product Information**

<b>Unit Size</b>	0.1 ml
<b>Concentration</b>	Concentrations vary lot to lot. See vial label for concentration. If unlisted please contact technical services.
<b>Storage</b>	Aliquot and store at -20C or -80C. Avoid freeze-thaw cycles.
<b>Clonality</b>	Polyclonal
<b>Preservative</b>	0.025% Proclin 300
<b>Isotype</b>	IgG
<b>Purity</b>	Antigen Affinity-purified
<b>Buffer</b>	PBS, 20% Glycerol
<b>Target Molecular Weight</b>	54 kDa

**Product Description**

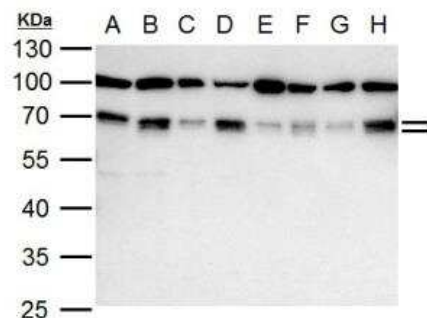
<b>Host</b>	Rabbit
<b>Gene ID</b>	4899
<b>Gene Symbol</b>	NRF1
<b>Species</b>	Human, Mouse, Rat
<b>Reactivity Notes</b>	Xenopus laevis (93%).
<b>Immunogen</b>	Recombinant protein encompassing a sequence within the center region of human Nrf1. The exact sequence is proprietary.

**Product Application Details**

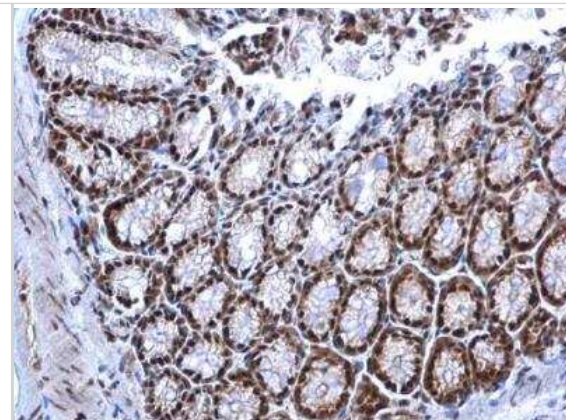
<b>Applications</b>	Western Blot, Immunocytochemistry/ Immunofluorescence, Immunohistochemistry, Immunohistochemistry-Paraffin, Immunoprecipitation
<b>Recommended Dilutions</b>	Western Blot 1:500-1:3000, Immunohistochemistry 1:100-1:1000, Immunocytochemistry/ Immunofluorescence 1:100-1:1000, Immunoprecipitation 1:100-1:500, Immunohistochemistry-Paraffin 1:100-1:1000

**Images**

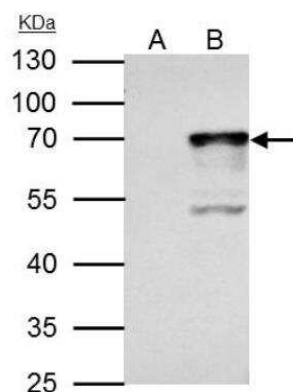
Western Blot: Nrf1 Antibody [NBP2-19586] - A. 30 ug 293T whole cell lysate/extract B. 30 ug 293T nuclear lysate/extract C. 30 ug A431 whole cell lysate/extract | D. 30 ug A431 nuclear lysate/extract E. 30 ug HeLa whole cell lysate/extract F. 30 ug HeLa nuclear lysate/extract G. 30 ug HepG2 whole cell lysate/extract H. 30 ug HepG2 nuclear lysate/extract 10 % SDS-PAGE NRF1 antibody dilution: 1:1000



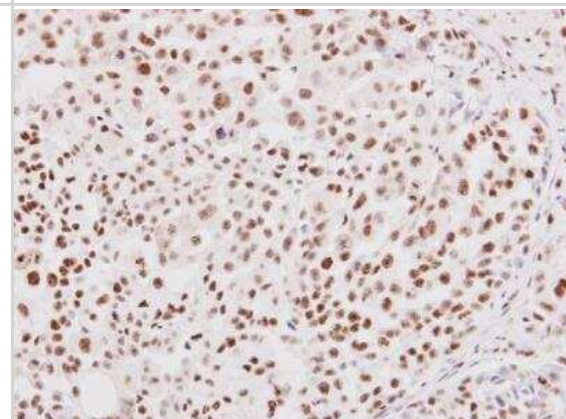
Immunohistochemistry-Paraffin: Nrf1 Antibody [NBP2-19586] - Paraffin-embedded mouse colon. NRF1 antibody dilution: 1:500.



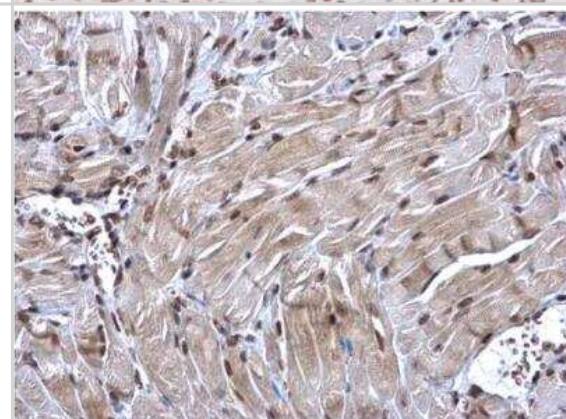
Western Blot: Nrf1 Antibody [NBP2-19586] - IP samples: 293T whole cell extract A. Control with 4 ug of preimmune Rabbit IgG B. Immunoprecipitation of NRF1 protein by 4 ug NRF1 antibody. 10 % SDS-PAGE The immunoprecipitated NRF1 protein was detected by NRF1 antibody diluted at 1:1000. [EasyBlot anti-rabbit IgG was used as a secondary reagent].



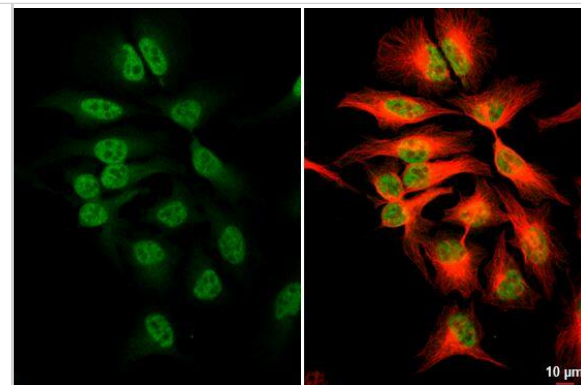
Immunohistochemistry-Paraffin: Nrf1 Antibody [NBP2-19586] - Paraffin-embedded human lung adenocarcinoma. NRF1 antibody diluted at 1:250.



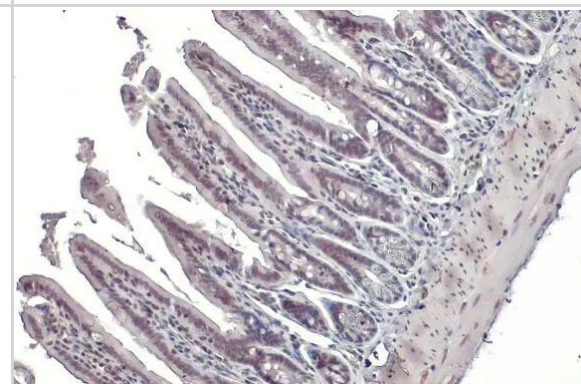
Immunohistochemistry-Paraffin: Nrf1 Antibody [NBP2-19586] - Paraffin-embedded mouse muscle. NRF1 antibody dilution: 1:500.



**Immunocytochemistry/Immunofluorescence:** Nrf1 Antibody [NBP2-19586] -HeLa cells were fixed in 4% paraformaldehyde at RT for 15 min. Green: NRF1 stained by NRF1 antibody diluted at 1:500. Red: alpha Tubulin, a cytoskeleton marker, stained by alpha Tubulin antibody [114] diluted at 1:1000. Scale bar= 10µm.



**Immunohistochemistry-Paraffin:** Nrf1 Antibody [NBP2-19586] - Nrf1 antibody detects Nrf1 protein at nucleus by immunohistochemical analysis. Sample: Paraffin-embedded mouse intestine. Nrf1 stained by Nrf1 antibody (NBP2-19586) diluted at 1:500. Antigen Retrieval: Citrate buffer, pH 6.0, 15 min



## Publications

Kshirsagar S, Sawant N, Morton H Et al. Mitophagy enhancers against phosphorylated Tau-induced mitochondrial and synaptic toxicities in Alzheimer disease Pharmacological research 2021-11-08 [PMID: 34763094] (WB, Mouse)



### **Novus Biologicals USA**

10730 E. Briarwood Avenue  
Centennial, CO 80112  
USA  
Phone: 303.730.1950  
Toll Free: 1.888.506.6887  
Fax: 303.730.1966  
nb-customerservice@bio-techne.com

### **Bio-Techne Canada**

21 Canmotor Ave  
Toronto, ON M8Z 4E6  
Canada  
Phone: 905.827.6400  
Toll Free: 855.668.8722  
Fax: 905.827.6402  
canada.inquires@bio-techne.com

### **Bio-Techne Ltd**

19 Barton Lane  
Abingdon Science Park  
Abingdon, OX14 3NB, United Kingdom  
Phone: (44) (0) 1235 529449  
Free Phone: 0800 37 34 15  
Fax: (44) (0) 1235 533420  
info.EMEA@bio-techne.com

### **General Contact Information**

[www.novusbio.com](http://www.novusbio.com)  
Technical Support: nb-technical@bio-techne.com  
Orders: nb-customerservice@bio-techne.com  
General: novus@novusbio.com

### **Products Related to NBP2-19586**

---

HAF008	Goat anti-Rabbit IgG Secondary Antibody [HRP]
NB7160	Goat anti-Rabbit IgG (H+L) Secondary Antibody [HRP]
NBP2-24891	Rabbit IgG Isotype Control
H00004899-P01-10ug	Recombinant Human Nrf1 GST (N-Term) Protein

---

### **Limitations**

This product is for research use only and is not approved for use in humans or in clinical diagnosis. Primary Antibodies are guaranteed for 1 year from date of receipt.

For more information on our 100% guarantee, please visit [www.novusbio.com/guarantee](http://www.novusbio.com/guarantee)

Earn gift cards/discounts by submitting a review: [www.novusbio.com/reviews/submit/NBP2-19586](http://www.novusbio.com/reviews/submit/NBP2-19586)

Earn gift cards/discounts by submitting a publication using this product:  
[www.novusbio.com/publications](http://www.novusbio.com/publications)

