

Product Datasheet

mtTFA Antibody NBP2-19438

Unit Size: 0.1 ml

Aliquot and store at -20C or -80C. Avoid freeze-thaw cycles.

www.novusbio.com



technical@novusbio.com

Protocols, Publications, Related Products, Reviews, Research Tools and Images at:
www.novusbio.com/NBP2-19438

Updated 9/9/2025 v.20.1

Earn rewards for product
reviews and publications.

Submit a publication at www.novusbio.com/publications

Submit a review at www.novusbio.com/reviews/destination/NBP2-19438



NBP2-19438

mtTFA Antibody

Product Information

Unit Size	0.1 ml
Concentration	Concentrations vary lot to lot. See vial label for concentration. If unlisted please contact technical services.
Storage	Aliquot and store at -20C or -80C. Avoid freeze-thaw cycles.
Clonality	Polyclonal
Preservative	0.025% Proclin 300
Isotype	IgG
Purity	Antigen Affinity-purified
Buffer	PBS (pH 7), 20% Glycerol, 1% BSA
Target Molecular Weight	29 kDa

Product Description

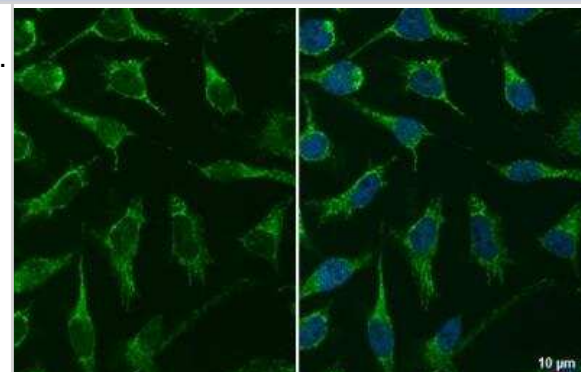
Description	Novus Biologicals Rabbit mtTFA Antibody (NBP2-19438) is a polyclonal antibody validated for use in IHC, WB, ICC/IF and IP. All Novus Biologicals antibodies are covered by our 100% guarantee.
Host	Rabbit
Gene ID	7019
Gene Symbol	TFAM
Species	Human, Mouse, Rat
Immunogen	Full length human mtTFA Recombinant protein.

Product Application Details

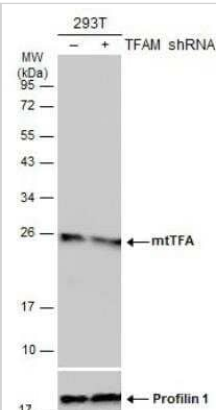
Applications	Western Blot, Immunohistochemistry-Paraffin, Immunocytochemistry/Immunofluorescence, Immunohistochemistry, Immunoprecipitation
Recommended Dilutions	Western Blot 1:500-1:3000, Immunohistochemistry 1:100-1:1000, Immunocytochemistry/ Immunofluorescence 1:100-1:1000, Immunoprecipitation 1:100-1:500, Immunohistochemistry-Paraffin 1:100-1:1000

Images

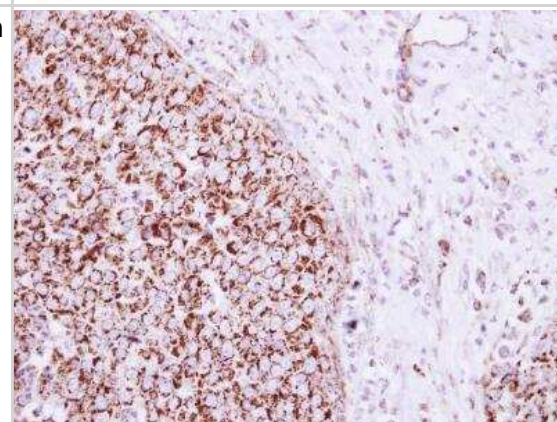
Immunocytochemistry/Immunofluorescence: mtTFA Antibody [NBP2-19438] - HeLa cells were fixed in 4% paraformaldehyde at RT for 15 min. Green: TFAM stained by TFAM antibody diluted at 1:1000.



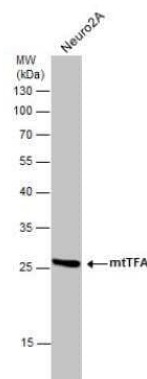
Western Blot: mtTFA Antibody [NBP2-19438] - Non-transfected (-) and transfected (+) HeLa whole cell extracts (30 ug) were separated by 12% SDS-PAGE, and the membrane was blotted with mtTFA antibody diluted at 1:3000. HRP-conjugated anti-rabbit IgG antibody was used to detect the primary antibody.



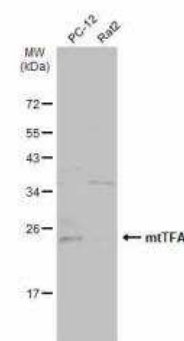
Immunohistochemistry-Paraffin: mtTFA Antibody [NBP2-19438] - Human breast cancer, using mtTFA antibody at 1:250 dilution. Antigen Retrieval: Trilogy™ (EDTA based, pH 8.0) buffer, 15min.



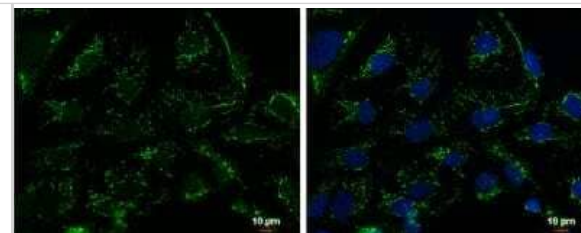
Western Blot: mtTFA Antibody [NBP2-19438] - Whole cell extract (30 ug) was separated by 12% SDS-PAGE, and the membrane was blotted with mtTFA antibody) diluted at 1:1000.



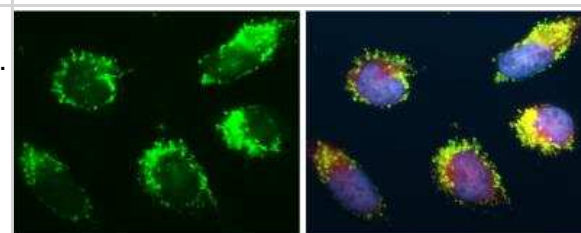
Western Blot: mtTFA Antibody [NBP2-19438] - Various whole cell extracts (30 ug) were separated by 12% SDS-PAGE, and the membrane was blotted with mtTFA antibody diluted at 1:500. HRP-conjugated anti-rabbit IgG antibody was used to detect the primary antibody.



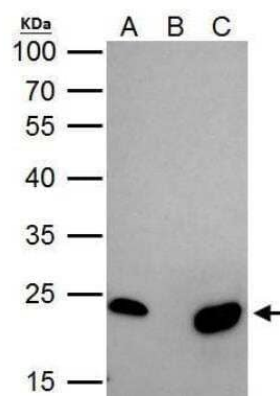
Immunocytochemistry/Immunofluorescence: mtTFA Antibody [NBP2-19438] - NT2D1 cells were fixed in 2% paraformaldehyde/culture medium at RT for 30 min. Green: mtTFA protein stained by mtTFA antibody diluted at 1:500. Blue: Hoechst 33342 staining. Scale bar = 10 μ m.



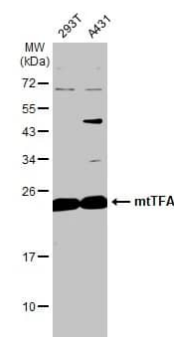
Immunocytochemistry/Immunofluorescence: mtTFA Antibody [NBP2-19438] - HeLa cells were fixed in 4% paraformaldehyde at RT for 15 min. Green: mtTFA protein stained by mtTFA antibody diluted at 1:500. Red: Mitotracker, a mitochondria marker, diluted at 1:2000. Blue: Hoechst 33342 staining.



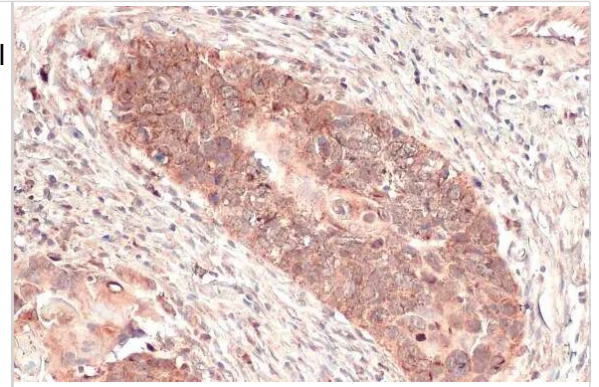
Immunoprecipitation: mtTFA Antibody [NBP2-19438] - IP Sample: 293T whole cell lysate/extract A. 40 μ g 293T whole cell lysate/extract B. Control with 2 μ g of preimmune rabbit IgG C. Immunoprecipitation of mtTFA protein by 2 μ g of mtTFA antibody 12% SDS-PAGE The immunoprecipitated mtTFA protein was detected by mtTFA antibody diluted at 1:1000. EasyBlot anti-rabbit IgG was used as a secondary reagent.



Western Blot: mtTFA Antibody [NBP2-19438] - Various whole cell extracts (30 μ g) were separated by 12% SDS-PAGE, and the membrane was blotted with mtTFA antibody (NBP2-19438) diluted at 1:1000. The HRP-conjugated anti-rabbit IgG antibody was used to detect the primary antibody.



Immunohistochemistry-Paraffin: mtTFA Antibody [NBP2-19438] - mtTFA antibody detects mtTFA protein at mitochondria by immunohistochemical analysis. Sample: Paraffin-embedded human esophageal carcinoma. mtTFA stained by mtTFA antibody (NBP2-19438) diluted at 1:165. Antigen Retrieval: Citrate buffer, pH 6.0, 15 min





Novus Biologicals USA

10730 E. Briarwood Avenue
Centennial, CO 80112
USA
Phone: 303.730.1950
Toll Free: 1.888.506.6887
Fax: 303.730.1966
nb-customerservice@bio-techne.com

Bio-Techne Canada

21 Canmotor Ave
Toronto, ON M8Z 4E6
Canada
Phone: 905.827.6400
Toll Free: 855.668.8722
Fax: 905.827.6402
canada.inquires@bio-techne.com

Bio-Techne Ltd

19 Barton Lane
Abingdon Science Park
Abingdon, OX14 3NB, United Kingdom
Phone: (44) (0) 1235 529449
Free Phone: 0800 37 34 15
Fax: (44) (0) 1235 533420
info.EMEA@bio-techne.com

General Contact Information

www.novusbio.com
Technical Support: nb-technical@bio-techne.com
Orders: nb-customerservice@bio-techne.com
General: novus@novusbio.com

Products Related to NBP2-19438

HAF008	Goat anti-Rabbit IgG Secondary Antibody [HRP]
NB7160	Goat anti-Rabbit IgG (H+L) Secondary Antibody [HRP]
NBP2-24891	Rabbit IgG Isotype Control
NBP1-50977-0.01mg	Recombinant Human mtTFA His Protein

Limitations

This product is for research use only and is not approved for use in humans or in clinical diagnosis. Primary Antibodies are guaranteed for 1 year from date of receipt.

For more information on our 100% guarantee, please visit www.novusbio.com/guarantee

Earn gift cards/discounts by submitting a review: www.novusbio.com/reviews/submit/NBP2-19438

Earn gift cards/discounts by submitting a publication using this product:
www.novusbio.com/publications

