

Product Datasheet

MSL3L1 Antibody NBP2-19419

Unit Size: 0.1 ml

Aliquot and store at -20C or -80C. Avoid freeze-thaw cycles.

www.novusbio.com



technical@novusbio.com

Protocols, Publications, Related Products, Reviews, Research Tools and Images at:
www.novusbio.com/NBP2-19419

Updated 9/9/2025 v.20.1

Earn rewards for product
reviews and publications.

Submit a publication at www.novusbio.com/publications

Submit a review at www.novusbio.com/reviews/destination/NBP2-19419



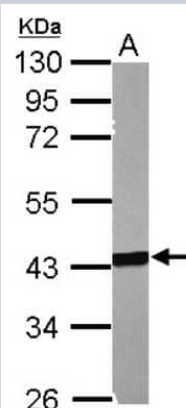
NBP2-19419**MSL3L1 Antibody**

Product Information	
Unit Size	0.1 ml
Concentration	Concentrations vary lot to lot. See vial label for concentration. If unlisted please contact technical services.
Storage	Aliquot and store at -20C or -80C. Avoid freeze-thaw cycles.
Clonality	Polyclonal
Preservative	0.01% Thimerosal
Isotype	IgG
Purity	Antigen Affinity-purified
Buffer	PBS (pH 7), 20% Glycerol, 1% BSA
Target Molecular Weight	60 kDa
Product Description	
Description	Novus Biologicals Rabbit MSL3L1 Antibody (NBP2-19419) is a polyclonal antibody validated for use in WB, ICC/IF and IP. All Novus Biologicals antibodies are covered by our 100% guarantee.
Host	Rabbit
Gene ID	10943
Gene Symbol	MSL3
Species	Human, Mouse
Immunogen	Recombinant protein encompassing a sequence within the center region of human MSL3L1. The exact sequence is proprietary.
Product Application Details	
Applications	Western Blot, Immunocytochemistry/ Immunofluorescence, Immunoprecipitation
Recommended Dilutions	Western Blot 1:500-1:3000, Immunocytochemistry/ Immunofluorescence 1:100-1:1000, Immunoprecipitation 1:100-1:500

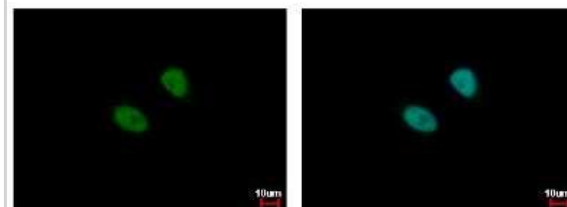


Images

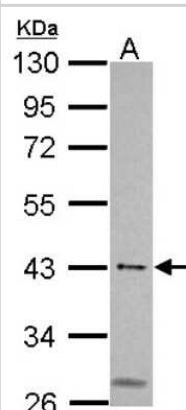
Western Blot: MSL3L1 Antibody [NBP2-19419] - Sample (50 ug of whole cell lysate) A: Mouse Muscle, 10% SDS PAGE gel, diluted at 1:1000.



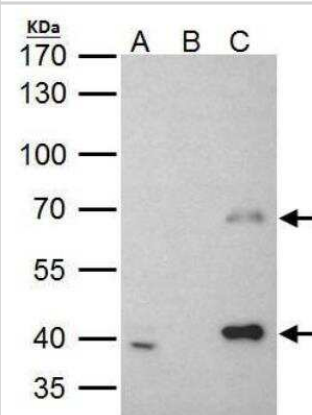
Immunocytochemistry/Immunofluorescence: MSL3L1 Antibody [NBP2-19419] - Sample: HeLa cells were fixed in 4% paraformaldehyde at RT for 15 min. Green: MSL3L1 protein stained by MSL3L1 antibody diluted at 1:500. Blue: Hoechst 33342 staining.



Western Blot: MSL3L1 Antibody [NBP2-19419] - Sample (30 ug of whole cell lysate) A: 293T 10% SDS PAGE gel, diluted at 1:500.



Immunoprecipitation: MSL3L1 Antibody [NBP2-19419] - MSL3L1 antibody immunoprecipitates MSL3L1 protein in IP experiments. IP Sample: 293T whole cell lysate/extract. A. 40 ug 293T whole cell lysate/extract B. Control with 2 ug of preimmune rabbit IgG C. Immunoprecipitation of MSL3L1 protein by 2 ug of MSL3L1 antibody. 7.5% SDS-PAGE. The immunoprecipitated MSL3L1 protein was detected by MSL3L1 antibody diluted at 1:1000. EasyBlot anti-rabbit IgG was used as a secondary reagent.





Novus Biologicals USA

10730 E. Briarwood Avenue
Centennial, CO 80112
USA
Phone: 303.730.1950
Toll Free: 1.888.506.6887
Fax: 303.730.1966
nb-customerservice@bio-techne.com

Bio-Techne Canada

21 Canmotor Ave
Toronto, ON M8Z 4E6
Canada
Phone: 905.827.6400
Toll Free: 855.668.8722
Fax: 905.827.6402
canada.inquires@bio-techne.com

Bio-Techne Ltd

19 Barton Lane
Abingdon Science Park
Abingdon, OX14 3NB, United Kingdom
Phone: (44) (0) 1235 529449
Free Phone: 0800 37 34 15
Fax: (44) (0) 1235 533420
info.EMEA@bio-techne.com

General Contact Information

www.novusbio.com
Technical Support: nb-technical@bio-techne.com
Orders: nb-customerservice@bio-techne.com
General: novus@novusbio.com

Products Related to NBP2-19419

HAF008	Goat anti-Rabbit IgG Secondary Antibody [HRP]
NB7160	Goat anti-Rabbit IgG (H+L) Secondary Antibody [HRP]
NBP2-24891	Rabbit IgG Isotype Control
H00010943-P01-10ug	Recombinant Human MSL3L1 GST (N-Term) Protein

Limitations

This product is for research use only and is not approved for use in humans or in clinical diagnosis. Primary Antibodies are guaranteed for 1 year from date of receipt.

For more information on our 100% guarantee, please visit www.novusbio.com/guarantee

Earn gift cards/discounts by submitting a review: www.novusbio.com/reviews/submit/NBP2-19419

Earn gift cards/discounts by submitting a publication using this product:
www.novusbio.com/publications

