

Product Datasheet

TET1 Antibody - BSA Free NBP2-19290

Unit Size: 0.1 ml

Aliquot and store at -20C or -80C. Avoid freeze-thaw cycles.

www.novusbio.com



technical@novusbio.com

Publications: 3

Protocols, Publications, Related Products, Reviews, Research Tools and Images at:
www.novusbio.com/NBP2-19290

Updated 9/9/2025 v.20.1

Earn rewards for product
reviews and publications.

Submit a publication at www.novusbio.com/publications

Submit a review at www.novusbio.com/reviews/destination/NBP2-19290



NBP2-19290

TET1 Antibody - BSA Free

Product Information

Unit Size	0.1 ml
Concentration	Concentrations vary lot to lot. See vial label for concentration. If unlisted please contact technical services.
Storage	Aliquot and store at -20C or -80C. Avoid freeze-thaw cycles.
Clonality	Polyclonal
Preservative	0.025% Proclin 300
Isotype	IgG
Purity	Antigen Affinity-purified
Buffer	PBS (pH 7), 20% Glycerol
Target Molecular Weight	219 kDa

Product Description

Description	Novus Biologicals Rabbit TET1 Antibody - BSA Free (NBP2-19290) is a polyclonal antibody validated for use in IHC, WB, Flow, ICC/IF and ChIP. Anti-TET1 Antibody: Cited in 2 publications. All Novus Biologicals antibodies are covered by our 100% guarantee.
Host	Rabbit
Gene ID	80312
Gene Symbol	TET1
Species	Human, Mouse
Reactivity Notes	Use in Rat reported in scientific literature (PMID:34246869)
Immunogen	Recombinant protein encompassing a sequence within the N-terminus region of mouse TET1. The exact sequence is proprietary.

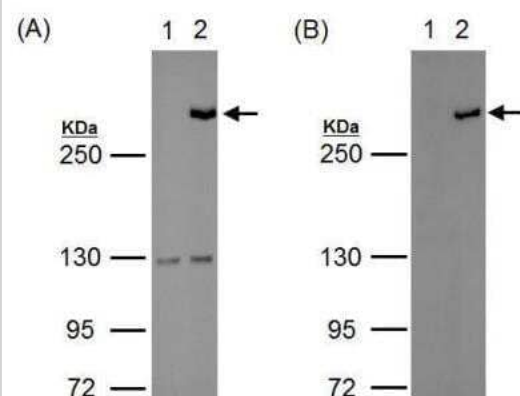
Product Application Details

Applications	Western Blot, Immunohistochemistry-Paraffin, Flow Cytometry, Immunocytochemistry/ Immunofluorescence, Immunohistochemistry, Chromatin Immunoprecipitation (ChIP)
Recommended Dilutions	Western Blot 1:500-1:20000, Flow Cytometry, Immunohistochemistry, Immunocytochemistry/ Immunofluorescence 1:100-1:1000, Immunohistochemistry-Paraffin, Chromatin Immunoprecipitation (ChIP)
Application Notes	Use in Flow Cytometry reported in scientific literature (PMID:34246869). IHC-P, ChIP assay- Assay dependent.

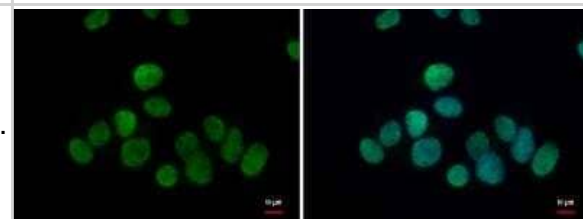


Images

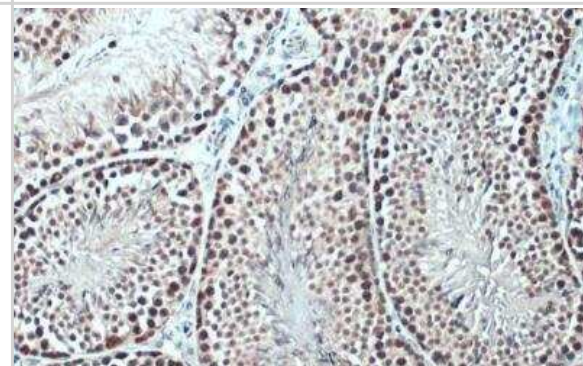
Western Blot: TET1 Antibody [NBP2-19290] - WB analysis of lysates from 293T cell which were mock transfected (lane1) or with tagged-mTet1 (lane 2) for 24hrs, using either TET1 antibody (diluted at 1:2000) (A) or anti-tag (B) antibody.



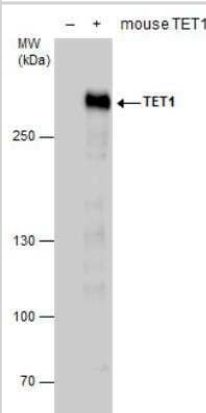
Immunocytochemistry/Immunofluorescence: TET1 Antibody [NBP2-19290] - ICC-IF validation of TET1 antibody on HepG2 cells which were fixed in 4% paraformaldehyde at RT for 15 min. Green: TET1 protein stained by TET1 antibody diluted at 1:500. Blue: Hoechst 33342 staining.



Immunohistochemistry-Paraffin: TET1 Antibody [NBP2-19290] - Mouse testis. TET1 stained by TET1 antibody [N1], N-term diluted at 1:500. Antigen Retrieval: Citrate buffer, pH 6.0, 15 min.



Western Blot: TET1 Antibody [NBP2-19290] - WB validation of TET1 antibody on 30 ug whole cell extracts of non-transfected (-) and mouse TET1-transfected (+, including DDDDK-tag) 293T cells. The proteins were separated on 5% SDS-PAGE, and the membrane was blotted with TET1 antibody at a dilution of 1:20000.



Publications

Maximilian Stötzel, Chieh-Yu Cheng, Ibrahim A Ilik, Abhishek Sampath Kumar, Persia Akbari Omgba, Vera A van der Weijden, Yufei Zhang, Martin Vingron, Alexander Meissner, Tuğçe Aktaş, Helene Kretzmer, Aydan Bulut-Karslioğlu
TET activity safeguards pluripotency throughout embryonic dormancy. Nature structural & molecular biology 2024-05-23 [PMID: 38783076]

Deshpande Sss, Nemani H, Balasinor Nh High fat diet-induced- and genetically inherited- obesity differential alters DNA demethylation pathways in the germline of adult male rats Reproductive biology 2021-07-08 [PMID: 34246869] (FLOW)

Gao J, Wang H, Shen J et al. Mutual regulation between GDF11 and TET2 prevents senescence of mesenchymal stem cells bioRxiv 2020-01-01 (WB, Human)





Novus Biologicals USA

10730 E. Briarwood Avenue
Centennial, CO 80112
USA
Phone: 303.730.1950
Toll Free: 1.888.506.6887
Fax: 303.730.1966
nb-customerservice@bio-techne.com

Bio-Techne Canada

21 Canmotor Ave
Toronto, ON M8Z 4E6
Canada
Phone: 905.827.6400
Toll Free: 855.668.8722
Fax: 905.827.6402
canada.inquires@bio-techne.com

Bio-Techne Ltd

19 Barton Lane
Abingdon Science Park
Abingdon, OX14 3NB, United Kingdom
Phone: (44) (0) 1235 529449
Free Phone: 0800 37 34 15
Fax: (44) (0) 1235 533420
info.EMEA@bio-techne.com

General Contact Information

www.novusbio.com
Technical Support: nb-technical@bio-techne.com
Orders: nb-customerservice@bio-techne.com
General: novus@novusbio.com

Products Related to NBP2-19290

HAF008	Goat anti-Rabbit IgG Secondary Antibody [HRP]
NB7160	Goat anti-Rabbit IgG (H+L) Secondary Antibody [HRP]
NBP2-24891	Rabbit IgG Isotype Control
NBP1-78965PEP	TET1 Antibody Blocking Peptide

Limitations

This product is for research use only and is not approved for use in humans or in clinical diagnosis. Primary Antibodies are guaranteed for 1 year from date of receipt.

For more information on our 100% guarantee, please visit www.novusbio.com/guarantee

Earn gift cards/discounts by submitting a review: www.novusbio.com/reviews/submit/NBP2-19290

Earn gift cards/discounts by submitting a publication using this product:
www.novusbio.com/publications

