

# Product Datasheet

## **IL-27R alpha/WSX-1/TCCR Antibody (34N4G11) [Alexa Fluor® 647] NBP2-19015AF647**

Unit Size: 0.1 ml

Store at 4C in the dark.

[www.novusbio.com](http://www.novusbio.com)



[technical@novusbio.com](mailto:technical@novusbio.com)

Protocols, Publications, Related Products, Reviews, Research Tools and Images at:  
[www.novusbio.com/NBP2-19015AF647](http://www.novusbio.com/NBP2-19015AF647)

Updated 10/23/2024 v.20.1

Earn rewards for product reviews and publications.

Submit a publication at [www.novusbio.com/publications](http://www.novusbio.com/publications)

Submit a review at [www.novusbio.com/reviews/destination/NBP2-19015AF647](http://www.novusbio.com/reviews/destination/NBP2-19015AF647)



**NBP2-19015AF647**

IL-27R alpha/WSX-1/TCCR Antibody (34N4G11) [Alexa Fluor® 647]

Product Information	
Unit Size	0.1 ml
Concentration	Please see the vial label for concentration. If unlisted please contact technical services.
Storage	Store at 4C in the dark.
Clonality	Monoclonal
Clone	34N4G11
Preservative	0.05% Sodium Azide
Isotype	IgG2b Kappa
Conjugate	Alexa Fluor 647
Purity	Protein G purified
Buffer	50mM Sodium Borate

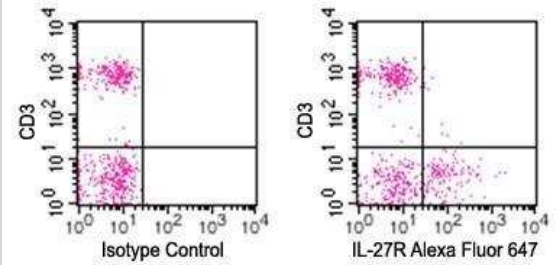
Product Description	
Host	Mouse
Gene ID	9466
Gene Symbol	IL27RA
Species	Human
Specificity/Sensitivity	IL-27R (WSX-1) is 65-70 kDa protein and is highly expressed in lymphoid tissues such as spleen, lymph nodes and peripheral blood leukocytes including CD4+ and CD8+ T cells, monocytes, DCs and NK cells
Immunogen	A portion of amino acids 200-250 of human IL-27R (WSX-1) was used as the immunogen for this antibody.
Notes	Alexa Fluor (R) products are provided under an intellectual property license from Life Technologies Corporation. The purchase of this product conveys to the buyer the non-transferable right to use the purchased product and components of the product only in research conducted by the buyer (whether the buyer is an academic or for-profit entity). The sale of this product is expressly conditioned on the buyer not using the product or its components, or any materials made using the product or its components, in any activity to generate revenue, which may include, but is not limited to use of the product or its components: (i) in manufacturing; (ii) to provide a service, information, or data in return for payment; (iii) for therapeutic, diagnostic or prophylactic purposes; or (iv) for resale, regardless of whether they are resold for use in research. For information on purchasing a license to this product for purposes other than as described above, contact Life Technologies Corporation, 5791 Van Allen Way, Carlsbad, CA 92008 USA or <a href="mailto:outlicensing@lifetech.com">outlicensing@lifetech.com</a> . This conjugate is made on demand. Actual recovery may vary from the stated volume of this product. The volume will be greater than or equal to the unit size stated on the datasheet.

Product Application Details	
Applications	Flow Cytometry, Flow (Cell Surface), Immunohistochemistry, Immunohistochemistry-Paraffin, CyTOF-ready
Recommended Dilutions	Flow Cytometry, Immunohistochemistry, Immunohistochemistry-Paraffin, Flow (Cell Surface), CyTOF-ready
Application Notes	Optimal dilution of this antibody should be experimentally determined.



## Images

Flow Cytometry: IL27RA Antibody (34N4G11) [Alexa Fluor (R) 647] [NBP2-19015AF647] - Surface staining of IL27R on freshly isolated (PPI negative) human PBMCs using IL-27R antibody and CD3 antibody at 10 ul/10<sup>6</sup> cells. Flow kit, mouse IgG2b isotype control antibody, and RBC lysis buffer were used for this test.





### **Novus Biologicals USA**

10730 E. Briarwood Avenue  
Centennial, CO 80112  
USA  
Phone: 303.730.1950  
Toll Free: 1.888.506.6887  
Fax: 303.730.1966  
nb-customerservice@bio-techne.com

### **Bio-Techne Canada**

21 Canmotor Ave  
Toronto, ON M8Z 4E6  
Canada  
Phone: 905.827.6400  
Toll Free: 855.668.8722  
Fax: 905.827.6402  
canada.inquires@bio-techne.com

### **Bio-Techne Ltd**

19 Barton Lane  
Abingdon Science Park  
Abingdon, OX14 3NB, United Kingdom  
Phone: (44) (0) 1235 529449  
Free Phone: 0800 37 34 15  
Fax: (44) (0) 1235 533420  
info.EMEA@bio-techne.com

### **General Contact Information**

www.novusbio.com  
Technical Support: nb-technical@bio-techne.com  
Orders: nb-customerservice@bio-techne.com  
General: novus@novusbio.com

### **Products Related to NBP2-19015AF647**

---

NBP1-43317AF647	Mouse IgG2b Kappa Light Chain Isotype Control (MG2b) [Alexa Fluor® 647]
NBP2-19015AF700	IL-27R alpha/WSX-1/TCCR Antibody (34N4G11) [Alexa Fluor® 700]
NBP3-21361PEP	IL-27R alpha/WSX-1/TCCR Recombinant Protein Antigen
210-TA-005	TNF-alpha [Unconjugated]

---

### **Limitations**

This product is for research use only and is not approved for use in humans or in clinical diagnosis. Primary Antibodies are guaranteed for 1 year from date of receipt.

For more information on our 100% guarantee, please visit [www.novusbio.com/guarantee](http://www.novusbio.com/guarantee)

Earn gift cards/discounts by submitting a review: [www.novusbio.com/reviews/submit/NBP2-19015AF647](http://www.novusbio.com/reviews/submit/NBP2-19015AF647)

Earn gift cards/discounts by submitting a publication using this product:  
[www.novusbio.com/publications](http://www.novusbio.com/publications)

