

Product Datasheet

IL-27R alpha/WSX-1/TCCR Antibody (34N4G11) - BSA Free NBP2-19015

Unit Size: 0.1 mg

Store at 4C short term. Aliquot and store at -20C long term. Avoid freeze-thaw cycles.

www.novusbio.com



technical@novusbio.com

Publications: 1

Protocols, Publications, Related Products, Reviews, Research Tools and Images at:
www.novusbio.com/NBP2-19015

Updated 10/23/2024 v.20.1

Earn rewards for product
reviews and publications.

Submit a publication at www.novusbio.com/publications

Submit a review at www.novusbio.com/reviews/destination/NBP2-19015



NBP2-19015

IL-27R alpha/WSX-1/TCCR Antibody (34N4G11) - BSA Free

Product Information

Unit Size	0.1 mg
Concentration	1.0 mg/ml
Storage	Store at 4C short term. Aliquot and store at -20C long term. Avoid freeze-thaw cycles.
Clonality	Monoclonal
Clone	34N4G11
Preservative	0.05% Sodium Azide
Isotype	IgG2b Kappa
Purity	Protein G purified
Buffer	PBS

Product Description

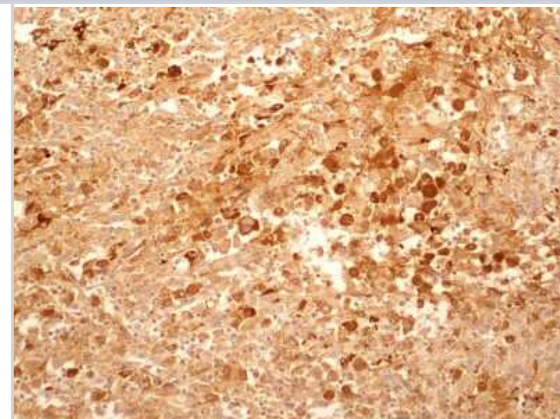
Host	Mouse
Gene ID	9466
Gene Symbol	IL27RA
Species	Human
Specificity/Sensitivity	IL-27R (WSX-1) is 65-70 kDa protein and is highly expressed in lymphoid tissues such as spleen, lymph nodes and peripheral blood leukocytes including CD4+ and CD8+ T cells, monocytes, DCs and NK cells
Immunogen	A portion of amino acids 200-250 of human IL-27R (WSX-1) was used as the immunogen for this antibody.

Product Application Details

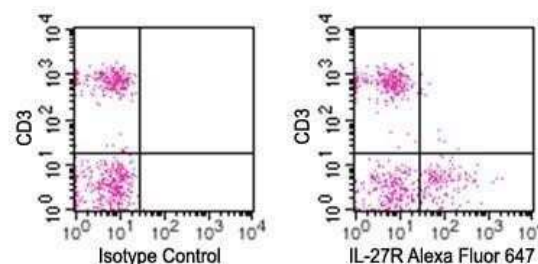
Applications	Flow Cytometry, Flow (Cell Surface), Immunohistochemistry, Immunohistochemistry-Paraffin, CyTOF-ready
Recommended Dilutions	Flow Cytometry 1 ug/ml, Immunohistochemistry 1:10-1:500, Immunohistochemistry-Paraffin 5 ug/ml, Flow (Cell Surface) 1 ug/ml, CyTOF-ready
Application Notes	This antibody is Cytof ready.

Images

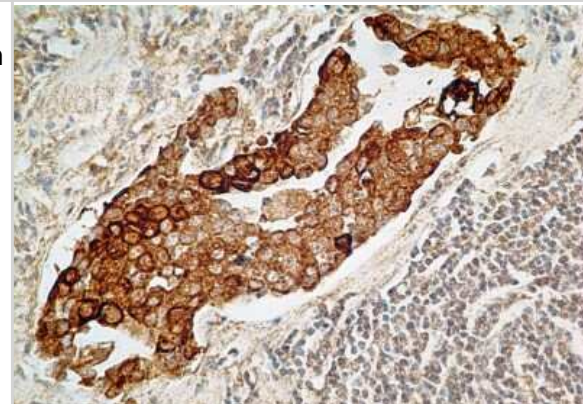
Immunohistochemistry-Paraffin: IL-27 R alpha/WSX-1/TCCR Antibody (34N4G11) [NBP2-19015] - IHC-P detection of IL27RA protein in a section of human renal/kidney cancer tissue using IL27RA antibody (34N4G11) at a concentration of 5ug/ml. The representative image shows membrane-cytoplasmic positivity for IL27RA protein in the cancer cells.



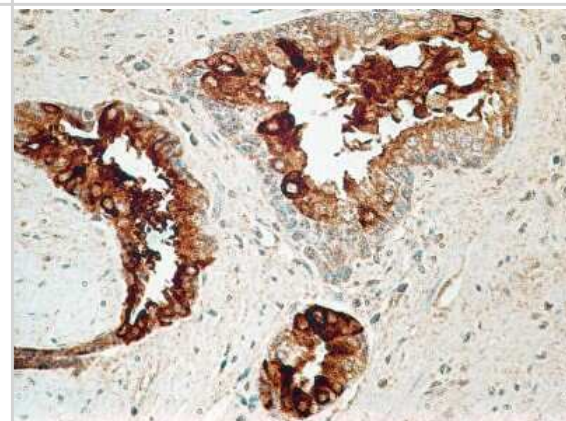
Flow (Cell Surface): IL-27 R alpha/WSX-1/TCCR Antibody (34N4G11) [NBP2-19015] - Analysis using the Alexa Fluor (R) 647 conjugate of NBP2-19015. Surface staining of IL27R on freshly isolated (PPI negative) human PBMCs using IL-27R antibody and CD3 antibody at 10 ul/10⁶ cells. Flow kit, mouse IgG2b isotype control antibody, and RBC lysis buffer were used for this test.



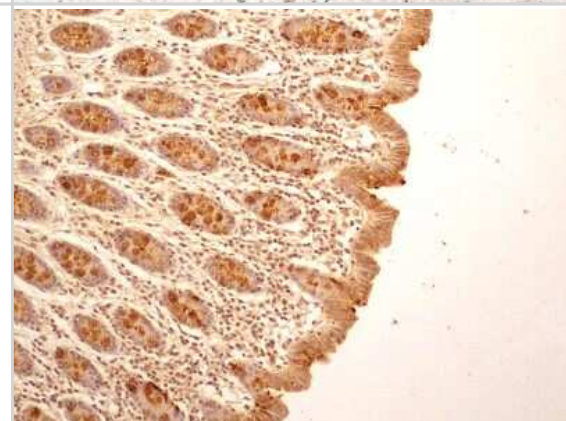
Immunohistochemistry-Paraffin: IL-27 R alpha/WSX-1/TCCR Antibody (34N4G11) [NBP2-19015] - Adenocarcinoma of the stomach probed with IL-27R antibody at 5 ug/ml.



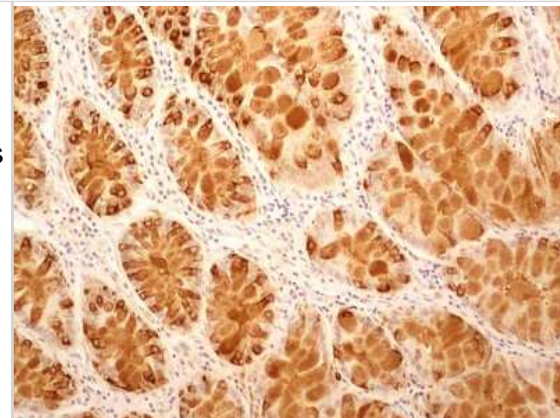
Immunohistochemistry-Paraffin: IL-27 R alpha/WSX-1/TCCR Antibody (34N4G11) [NBP2-19015] - FFPE human prostate probed with IL-27R antibody at 5 ug/ml.



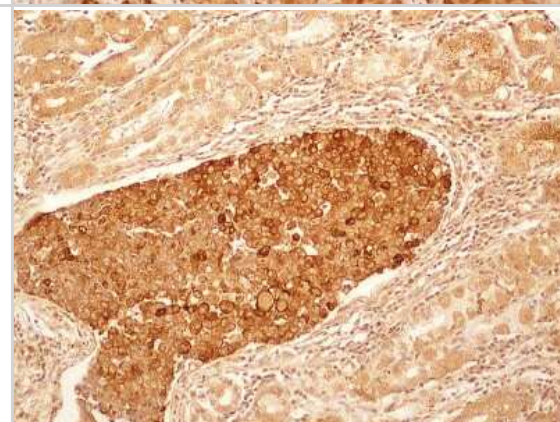
Immunohistochemistry-Paraffin: IL-27 R alpha/WSX-1/TCCR Antibody (34N4G11) [NBP2-19015] - IHC-P detection of IL27RA protein in a section of normal human colon tissue using IL27RA antibody (34N4G11) at a concentration of 5ug/ml. Intense membrane with cytoplasmic staining was observed in the cells of crypts and the absorptive columnar epithelium.



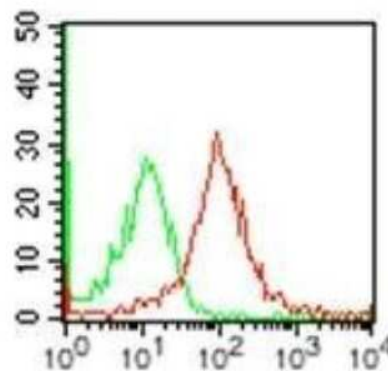
Immunohistochemistry-Paraffin: IL-27 R alpha/WSX-1/TCCR Antibody (34N4G11) [NBP2-19015] - IHC-P detection of IL27RA protein in a section of human colo-rectal cancer tissue using IL27RA antibody (34N4G11) at a concentration of 5ug/ml. The cancer cells showed specific positivity for IL27RA and the staining intensity was more towards the cellular membranes. The tumor stroma was largely negative for staining.



Immunohistochemistry-Paraffin: IL-27 R alpha/WSX-1/TCCR Antibody (34N4G11) [NBP2-19015] - IHC-P detection of IL27RA protein in a section of human stomach cancer tissue using IL27RA antibody (34N4G11) at a concentration of 5ug/ml. The cancer cells showed intense membrane-cytoplasmic positivity for IL27RA protein, whereas, the glands in adjacent area and the associated stroma developed distinctly weak staining.



Flow Cytometry: IL-27 R alpha/WSX-1/TCCR Antibody (34N4G11) [NBP2-19015] - Surface staining on human peripheral blood monocytes using IL-27R antibody at 1 ug/10⁶ cells (red represents specific antibody and green represents isotype control). APC-conjugated goat anti-mouse Ig F(ab')₂ secondary antibody, CS flow kit and an FcR block were used for this test.



Publications

Aghayev T, Mazitova AM, Fang JR et al. Interleukin-27 signaling serves as an immunological checkpoint for innate cytotoxic cells to promote hepatocellular carcinoma Cancer discovery 2022-06-20 [PMID: 35723626]



Novus Biologicals USA

10730 E. Briarwood Avenue
Centennial, CO 80112
USA
Phone: 303.730.1950
Toll Free: 1.888.506.6887
Fax: 303.730.1966
nb-customerservice@bio-techne.com

Bio-Techne Canada

21 Canmotor Ave
Toronto, ON M8Z 4E6
Canada
Phone: 905.827.6400
Toll Free: 855.668.8722
Fax: 905.827.6402
canada.inquires@bio-techne.com

Bio-Techne Ltd

19 Barton Lane
Abingdon Science Park
Abingdon, OX14 3NB, United Kingdom
Phone: (44) (0) 1235 529449
Free Phone: 0800 37 34 15
Fax: (44) (0) 1235 533420
info.EMEA@bio-techne.com

General Contact Information

www.novusbio.com
Technical Support: nb-technical@bio-techne.com
Orders: nb-customerservice@bio-techne.com
General: novus@novusbio.com

Products Related to NBP2-19015

HAF007	Goat anti-Mouse IgG Secondary Antibody [HRP]
NB720-B	Rabbit anti-Mouse IgG (H+L) Secondary Antibody [Biotin]
NBP1-43317-0.5mg	Mouse IgG2b Kappa Light Chain Isotype Control (MG2b)
NBP2-19015PE	IL-27R alpha/WSX-1/TCCR Antibody (34N4G11) [PE]

Limitations

This product is for research use only and is not approved for use in humans or in clinical diagnosis. Primary Antibodies are guaranteed for 1 year from date of receipt.

For more information on our 100% guarantee, please visit www.novusbio.com/guarantee

Earn gift cards/discounts by submitting a review: www.novusbio.com/reviews/submit/NBP2-19015

Earn gift cards/discounts by submitting a publication using this product:
www.novusbio.com/publications

