

Product Datasheet

MEF2C Antibody - BSA Free NBP2-17260

Unit Size: 0.1 ml

Aliquot and store at -20C or -80C. Avoid freeze-thaw cycles.

www.novusbio.com



technical@novusbio.com

Publications: 2

Protocols, Publications, Related Products, Reviews, Research Tools and Images at:
www.novusbio.com/NBP2-17260

Updated 2/23/2025 v.20.1

Earn rewards for product
reviews and publications.

Submit a publication at www.novusbio.com/publications

Submit a review at www.novusbio.com/reviews/destination/NBP2-17260



NBP2-17260

MEF2C Antibody - BSA Free

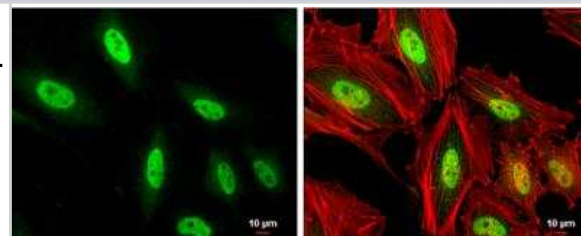
Product Information	
Unit Size	0.1 ml
Concentration	Concentrations vary lot to lot. See vial label for concentration. If unlisted please contact technical services.
Storage	Aliquot and store at -20C or -80C. Avoid freeze-thaw cycles.
Clonality	Polyclonal
Preservative	0.025% Proclin 300
Isotype	IgG
Purity	Antigen Affinity-purified
Buffer	0.025% ProClin 300
Target Molecular Weight	51 kDa

Product Description	
Host	Rabbit
Gene ID	4208
Gene Symbol	MEF2C
Species	Human, Mouse, Rat
Reactivity Notes	Xenopus laevis (90%).
Immunogen	Recombinant protein encompassing a sequence within the center region of human MEF2C. The exact sequence is proprietary.

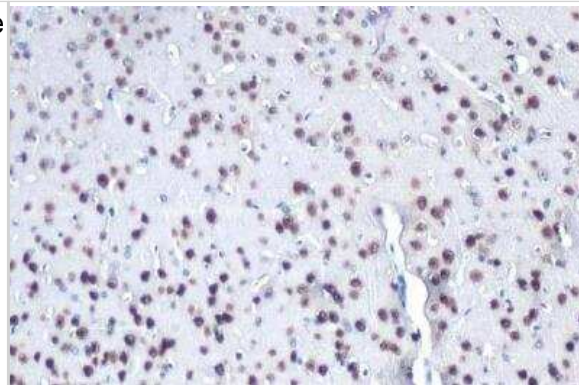
Product Application Details	
Applications	Western Blot, Immunocytochemistry/ Immunofluorescence, Immunohistochemistry, Immunohistochemistry-Frozen, Immunohistochemistry-Paraffin, Immunoprecipitation
Recommended Dilutions	Western Blot 1:5000-1:20000, Immunohistochemistry 1:100-1:1000, Immunocytochemistry/ Immunofluorescence 1:100-1:1000, Immunoprecipitation 1:100-1:500, Immunohistochemistry-Paraffin 1:100-1:1000, Immunohistochemistry-Frozen 1:100-1:1000

Images

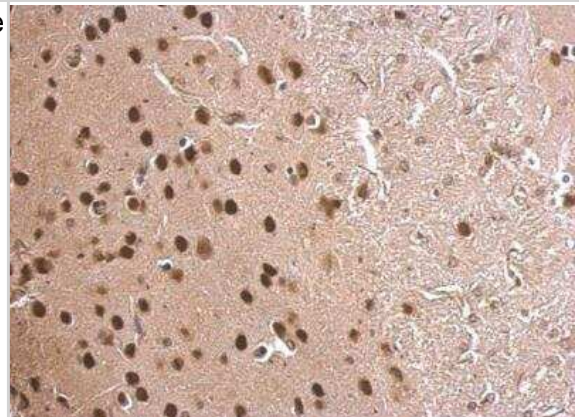
Immunocytochemistry/Immunofluorescence: MEF2C Antibody [NBP2-17260] - HeLa cells were fixed in 4% paraformaldehyde at RT for 15 min. Green: MEF2C protein stained by MEF2C antibody diluted at 1:1000. Red: phalloidin, a cytoskeleton marker, diluted at 1:200. Scale bar = 10 um.



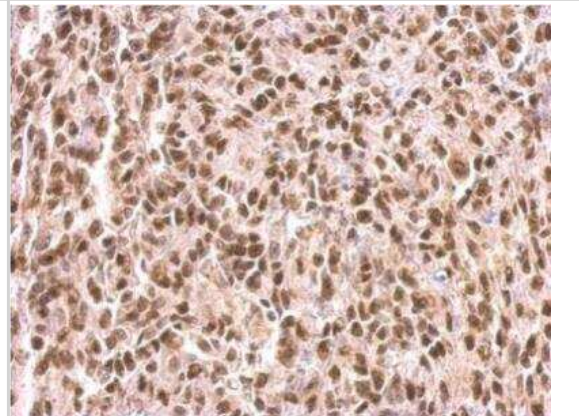
Immunohistochemistry-Paraffin: MEF2C Antibody [NBP2-17260] - Mouse brain. MEF2C stained by MEF2C antibody diluted at 1:250. Antigen Retrieval: Citrate buffer, pH 6.0, 15 min.



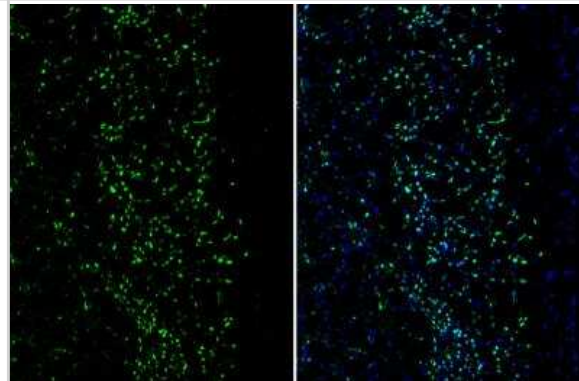
Immunohistochemistry-Paraffin: MEF2C Antibody [NBP2-17260] - Mouse fore brain. MEF2C antibody dilution: 1:500. Antigen Retrieval: Trilogy™ (EDTA based, pH 8.0) buffer, 15min.



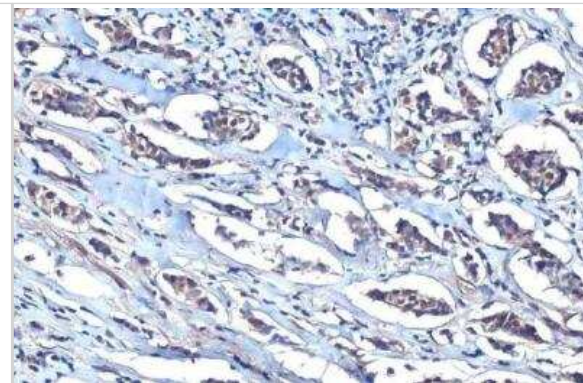
Immunohistochemistry-Paraffin: MEF2C Antibody [NBP2-17260] - Saos2 xenograft. MEF2C antibody dilution: 1:500. Antigen Retrieval: Trilogy™ (EDTA based, pH 8.0) buffer, 15min.



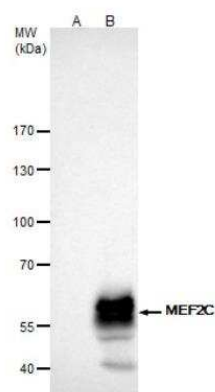
Immunohistochemistry-Frozen: MEF2C Antibody [NBP2-17260] - Mouse cerebral cortex. Green: MEF2C stained by MEF2C antibody diluted at 1:250. Blue: Fluoroshield with DAPI.



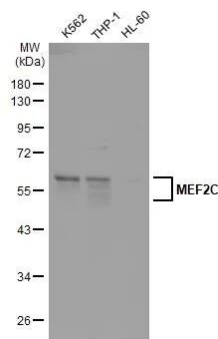
Immunohistochemistry-Paraffin: MEF2C Antibody [NBP2-17260] - Human breast carcinoma. MEF2C stained by MEF2C antibody diluted at 1:250. Antigen Retrieval: Citrate buffer, pH 6.0, 15 min.



Immunoprecipitation: MEF2C Antibody [NBP2-17260] - K562 whole cell extract A. Control with 4 ug of preimmune Rabbit IgG B. Immunoprecipitation of MEF2C protein by 4 ug MEF2C antibody 5 % SDS-PAGE The immunoprecipitated MEF2C protein was detected by MEF2C antibody diluted at 1:1000. [EasyBlot anti-rabbit IgG was used as a secondary reagent]



Western Blot: MEF2C Antibody [NBP2-17260] - Various whole cell extracts (30 ug) were separated by 10% SDS-PAGE, and the membrane was blotted with MEF2C antibody (NBP2-17260) diluted at 1:1000. The HRP-conjugated anti-rabbit IgG antibody was used to detect the primary antibody.



Publications

Bowles Kr, Silva Mc, Whitney K Et Al. ELAVL4, splicing, and glutamatergic dysfunction precede neuron loss in MAPT mutation cerebral organoids Cell 2021-07-21 [PMID: 34314701] (IF/IHC)

Ogura Y, Kakehashi C, Yoshihara T et al Ketogenic diet feeding improves aerobic metabolism property in extensor digitorum longus muscle of sedentary male rats PLoS One 2020-10-30 [PMID: 33125406] (WB, Rat)

Details:

Citation using the HRP version of this antibody.



Novus Biologicals USA

10730 E. Briarwood Avenue
Centennial, CO 80112
USA
Phone: 303.730.1950
Toll Free: 1.888.506.6887
Fax: 303.730.1966
nb-customerservice@bio-techne.com

Bio-Techne Canada

21 Canmotor Ave
Toronto, ON M8Z 4E6
Canada
Phone: 905.827.6400
Toll Free: 855.668.8722
Fax: 905.827.6402
canada.inquires@bio-techne.com

Bio-Techne Ltd

19 Barton Lane
Abingdon Science Park
Abingdon, OX14 3NB, United Kingdom
Phone: (44) (0) 1235 529449
Free Phone: 0800 37 34 15
Fax: (44) (0) 1235 533420
info.EMEA@bio-techne.com

General Contact Information

www.novusbio.com
Technical Support: nb-technical@bio-techne.com
Orders: nb-customerservice@bio-techne.com
General: novus@novusbio.com

Products Related to NBP2-17260

HAF008	Goat anti-Rabbit IgG Secondary Antibody [HRP]
NB7160	Goat anti-Rabbit IgG (H+L) Secondary Antibody [HRP]
NBP2-24891	Rabbit IgG Isotype Control
NBP2-52925PEP	MEF2C Recombinant Protein Antigen

Limitations

This product is for research use only and is not approved for use in humans or in clinical diagnosis. Primary Antibodies are guaranteed for 1 year from date of receipt.

For more information on our 100% guarantee, please visit www.novusbio.com/guarantee

Earn gift cards/discounts by submitting a review: www.novusbio.com/reviews/submit/NBP2-17260

Earn gift cards/discounts by submitting a publication using this product:
www.novusbio.com/publications

