

# Product Datasheet

## HIST1H3A Antibody NBP2-16838

Unit Size: 0.1 ml

Aliquot and store at -20C or -80C. Avoid freeze-thaw cycles.

[www.novusbio.com](http://www.novusbio.com)



[technical@novusbio.com](mailto:technical@novusbio.com)

Protocols, Publications, Related Products, Reviews, Research Tools and Images at:  
[www.novusbio.com/NBP2-16838](http://www.novusbio.com/NBP2-16838)

Updated 10/23/2024 v.20.1

Earn rewards for product  
reviews and publications.

Submit a publication at [www.novusbio.com/publications](http://www.novusbio.com/publications)

Submit a review at [www.novusbio.com/reviews/destination/NBP2-16838](http://www.novusbio.com/reviews/destination/NBP2-16838)



**NBP2-16838****HIST1H3A Antibody****Product Information**

<b>Unit Size</b>	0.1 ml
<b>Concentration</b>	Concentrations vary lot to lot. See vial label for concentration. If unlisted please contact technical services.
<b>Storage</b>	Aliquot and store at -20C or -80C. Avoid freeze-thaw cycles.
<b>Clonality</b>	Polyclonal
<b>Preservative</b>	0.025% Proclin 300
<b>Isotype</b>	IgG
<b>Purity</b>	Antigen Affinity-purified
<b>Buffer</b>	PBS (pH 7), 20% Glycerol, 1% BSA
<b>Target Molecular Weight</b>	15 kDa

**Product Description**

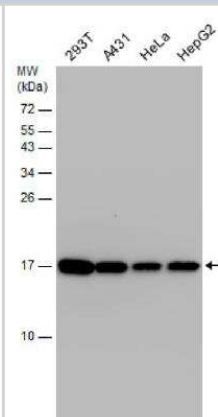
<b>Host</b>	Rabbit
<b>Gene ID</b>	8350
<b>Gene Symbol</b>	H3C1
<b>Species</b>	Human
<b>Immunogen</b>	Carrier-protein conjugated synthetic peptide surrounding di-methyl Lys4 of human HIST1H3A. The exact sequence is proprietary.

**Product Application Details**

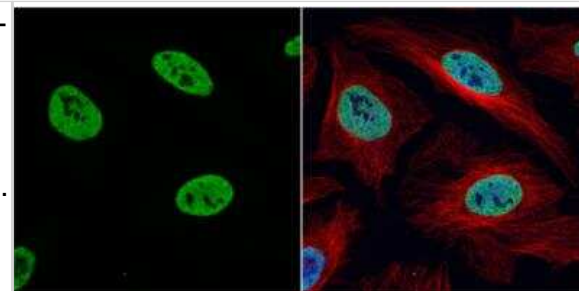
<b>Applications</b>	Western Blot, Immunocytochemistry/ Immunofluorescence, Immunohistochemistry, Immunohistochemistry-Paraffin, Immunoprecipitation, Chromatin Immunoprecipitation (ChIP)
<b>Recommended Dilutions</b>	Western Blot 1:1000-1:10000, Immunohistochemistry 10 - 1:500, Immunocytochemistry/ Immunofluorescence 1:100-1:1000, Immunoprecipitation 1:500-1:1000, Immunohistochemistry-Paraffin 1:100-1:1000, Chromatin Immunoprecipitation (ChIP)

**Images**

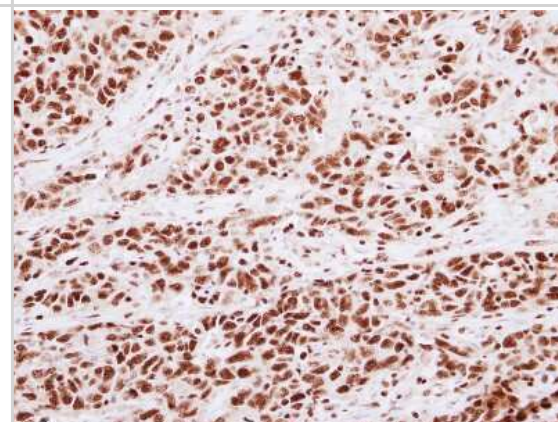
Western Blot: HIST1H3A Antibody [NBP2-16838] - Various whole cell extracts (30 ug) were separated by 15% SDS-PAGE, and the membrane was blotted with HIST1H3A antibody diluted at 1:5000.



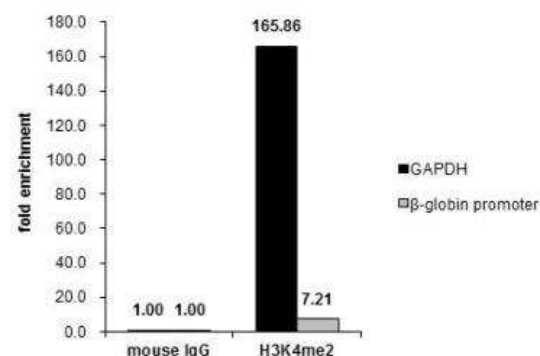
**Immunocytochemistry/Immunofluorescence:** HIST1H3A Antibody [NBP2-16838] - HIST1H3A antibody detects Histone HIST1H3A protein at nucleus by immunofluorescent analysis. Sample: HeLa cells were fixed in 4% paraformaldehyde at RT for 15 min. Green: HIST1H3A protein stained by HIST1H3A antibody diluted at 1:1000. Red: alpha Tubulin, a cytoskeleton marker, stained by alpha Tubulin antibody diluted at 1:1000. Blue: Hoechst 33342 staining.



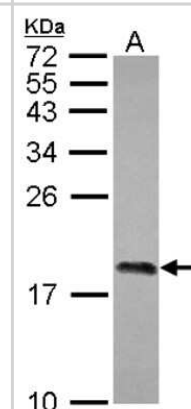
**Immunohistochemistry-Paraffin:** HIST1H3A Antibody [NBP2-16838] - Immunohistochemical analysis of paraffin-embedded Lung AdCA, using antibody at 1:250 dilution.



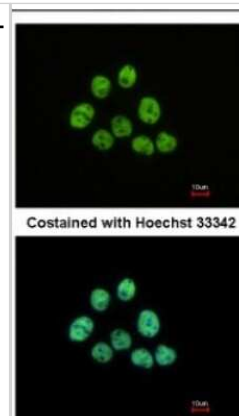
**Chromatin Immunoprecipitation (ChIP):** HIST1H3A Antibody [NBP2-16838] - Cross-linked ChIP was performed with HeLa chromatin extract and 5 ug of either control rabbit IgG or anti-HIST1H3A antibody. The precipitated DNA was detected by PCR with primer set targeting to GAPDH or beta-globin promoter.



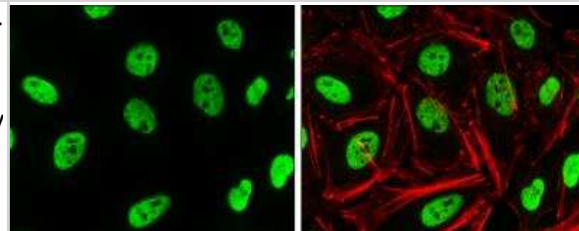
**Western Blot:** HIST1H3A Antibody [NBP2-16838] - Sample (30 ug of whole cell lysate) A: A431 15% SDS PAGE gel, diluted at 1:5000.



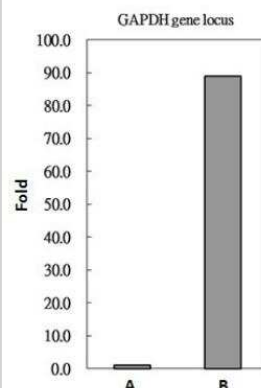
Immunocytochemistry/Immunofluorescence: HIST1H3A Antibody [NBP2-16838] - Immunofluorescence analysis of paraformaldehyde-fixed A431, using antibody at 1:500 dilution.



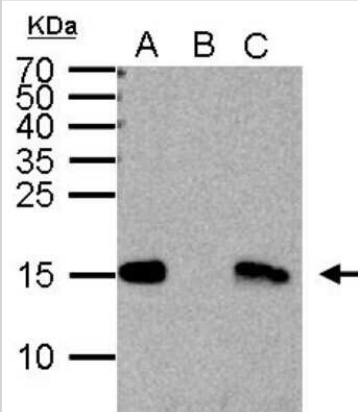
Immunocytochemistry/Immunofluorescence: HIST1H3A Antibody [NBP2-16838] - HIST1H3A Antibody detects HIST1H3A protein at nucleus by immunofluorescent analysis. Sample: HeLa cells were fixed in 4% paraformaldehyde at RT for 15 min. Green: HIST1H3A protein stained by HIST1H3A Antibody diluted at 1:1000. Red: phalloidin, a cytoskeleton marker, diluted at 1:50.



Chromatin Immunoprecipitation: HIST1H3A Antibody [NBP2-16838] - Histone H3 (di-methyl Lys4) antibody immunoprecipitates Histone H3 (di-methyl Lys4) protein-DNA in ChIP experiments. ChIP Sample: HeLa whole cell lysate/extract A. 5 ug preimmune rabbit IgG B. 5 ug of Histone H3 (di-methyl Lys4) antibody The precipitated DNA was detected by PCR with primer set targeting to GAPDH gene locus. .



Immunoprecipitation: HIST1H3A Antibody [NBP2-16838] - Sample: 1000 ug HeLa whole cell lysate/extract A. 50 ug HeLa whole cell lysate/extract B. Control with 2 ug of preimmune rabbit IgG C. Immunoprecipitation of Histone H3 (di-methyl Lys4) protein by 2 ug of Histone H3 (di-methyl Lys4) antibody 15% SDS-PAGE The immunoprecipitated Histone H3 (di-methyl Lys4) protein was detected by Histone H3 (di-methyl Lys4) antibody diluted at 1:1000. anti-rabbit IgG was used as a secondary reagent.





### **Novus Biologicals USA**

10730 E. Briarwood Avenue  
Centennial, CO 80112  
USA  
Phone: 303.730.1950  
Toll Free: 1.888.506.6887  
Fax: 303.730.1966  
nb-customerservice@bio-techne.com

### **Bio-Techne Canada**

21 Canmotor Ave  
Toronto, ON M8Z 4E6  
Canada  
Phone: 905.827.6400  
Toll Free: 855.668.8722  
Fax: 905.827.6402  
canada.inquires@bio-techne.com

### **Bio-Techne Ltd**

19 Barton Lane  
Abingdon Science Park  
Abingdon, OX14 3NB, United Kingdom  
Phone: (44) (0) 1235 529449  
Free Phone: 0800 37 34 15  
Fax: (44) (0) 1235 533420  
info.EMEA@bio-techne.com

### **General Contact Information**

www.novusbio.com  
Technical Support: nb-technical@bio-techne.com  
Orders: nb-customerservice@bio-techne.com  
General: novus@novusbio.com

### **Products Related to NBP2-16838**

---

HAF008	Goat anti-Rabbit IgG Secondary Antibody [HRP]
NB7160	Goat anti-Rabbit IgG (H+L) Secondary Antibody [HRP]
NBP2-24891	Rabbit IgG Isotype Control
NBP2-06572	HIST2H3C Overexpression Lysate

---

### **Limitations**

This product is for research use only and is not approved for use in humans or in clinical diagnosis. Primary Antibodies are guaranteed for 1 year from date of receipt.

For more information on our 100% guarantee, please visit [www.novusbio.com/guarantee](http://www.novusbio.com/guarantee)

Earn gift cards/discounts by submitting a review: [www.novusbio.com/reviews/submit/NBP2-16838](http://www.novusbio.com/reviews/submit/NBP2-16838)

Earn gift cards/discounts by submitting a publication using this product:  
[www.novusbio.com/publications](http://www.novusbio.com/publications)

