

Product Datasheet

Galectin-1 Antibody - BSA Free NBP2-16580

Unit Size: 0.1 ml

Aliquot and store at -20C or -80C. Avoid freeze-thaw cycles.

www.novusbio.com



technical@novusbio.com

Protocols, Publications, Related Products, Reviews, Research Tools and Images at:
www.novusbio.com/NBP2-16580

Updated 2/23/2025 v.20.1

Earn rewards for product
reviews and publications.

Submit a publication at www.novusbio.com/publications

Submit a review at www.novusbio.com/reviews/destination/NBP2-16580



NBP2-16580

Galectin-1 Antibody - BSA Free

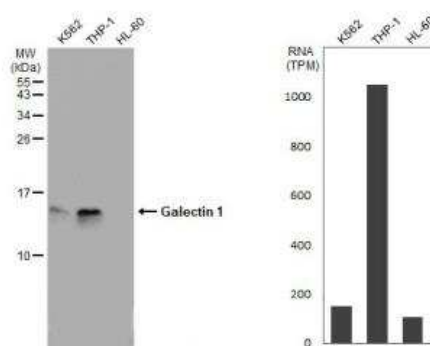
Product Information	
Unit Size	0.1 ml
Concentration	Concentrations vary lot to lot. See vial label for concentration. If unlisted please contact technical services.
Storage	Aliquot and store at -20C or -80C. Avoid freeze-thaw cycles.
Clonality	Polyclonal
Preservative	0.025% Proclin 300
Isotype	IgG
Purity	Antigen Affinity-purified
Buffer	PBS, 20% Glycerol
Target Molecular Weight	15 kDa

Product Description	
Host	Rabbit
Gene ID	3956
Gene Symbol	LGALS1
Species	Human, Mouse, Rat
Reactivity Notes	Bovine (85%), Dog (81%), Pig (84%), Sheep (84%).
Immunogen	Recombinant protein encompassing a sequence within the center region of human Galectin-1. The exact sequence is proprietary.

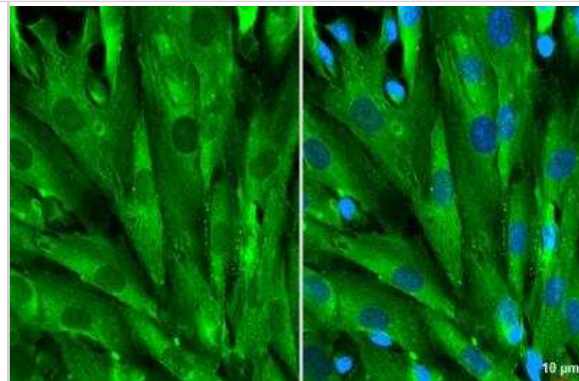
Product Application Details	
Applications	Western Blot, Immunocytochemistry/ Immunofluorescence, Immunohistochemistry, Immunohistochemistry-Frozen, Immunohistochemistry-Paraffin, Immunoprecipitation, Immunohistochemistry Whole-Mount
Recommended Dilutions	Western Blot 1:5000-1:20000, Immunohistochemistry 1:100-1:1000, Immunocytochemistry/ Immunofluorescence 1:100-1:1000, Immunoprecipitation Assay dependent, Immunohistochemistry-Paraffin 1:100-1:1000, Immunohistochemistry-Frozen 1:100-1:1000, Immunohistochemistry Whole-Mount Assay dependent

Images

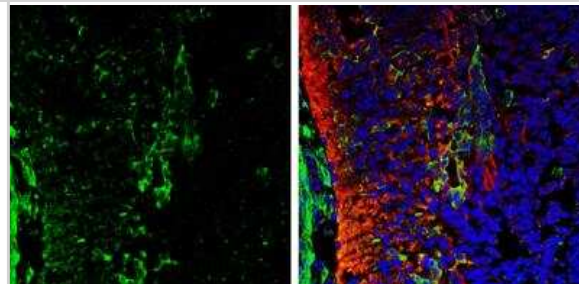
Western Blot: Galectin-1 Antibody [NBP2-16580] - Various whole cell extracts (30 ug) were separated by 15% SDS-PAGE, and the membrane was blotted with Galectin 1 antibody diluted at 1:2000. HRP-conjugated anti-rabbit IgG antibody was used to detect the primary antibody.



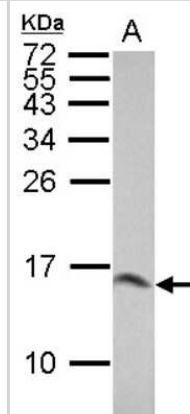
Immunocytochemistry/Immunofluorescence: Galectin-1 Antibody [NBP2-16580] - Galectin 1 antibody detects Galectin 1 protein at cytoplasm by immunofluorescent analysis. Sample: SK-N-SH cells were fixed in 4% paraformaldehyde at RT for 15 min. Green: Galectin 1 stained by Galectin 1 antibody diluted at 1:1000. Blue: Fluoroshield with DAPI. Scale bar= 10 μ m.



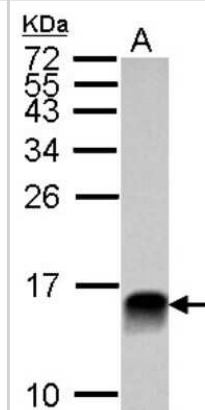
Immunohistochemistry-Frozen: Galectin-1 Antibody [NBP2-16580] - Frozen sectioned E13.5 Rat brain. Green: Galectin 1 protein stained by Galectin 1 antibody diluted at 1:250. Red: beta Tubulin 3/ TUJ1, a mature neuron marker, stained by beta Tubulin 3/ TUJ1 antibody [11710] (NBP2-43559) diluted at 1:500. Blue: Fluoroshield with DAPI.



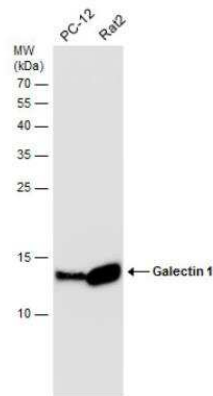
Western Blot: Galectin 1 Antibody [NBP2-16580] - Sample (30 μ g of whole cell lysate) A: BCL-1 15% SDS PAGE gel, diluted at 1:10000.



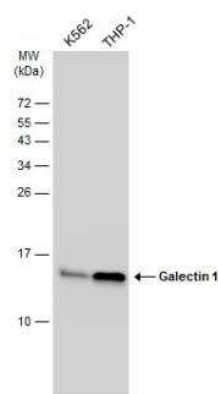
Western Blot: Galectin 1 Antibody [NBP2-16580] - Sample (30 μ g of whole cell lysate) A: NCI-H929 15% SDS PAGE gel, diluted at 1:10000.



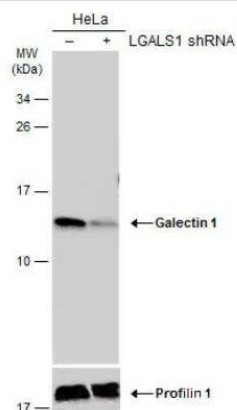
Western Blot: Galectin-1 Antibody [NBP2-16580] - Various whole cell extracts (30 ug) were separated by 15% SDS-PAGE, and the membrane was blotted with Galectin 1 antibody diluted at 1:10000.



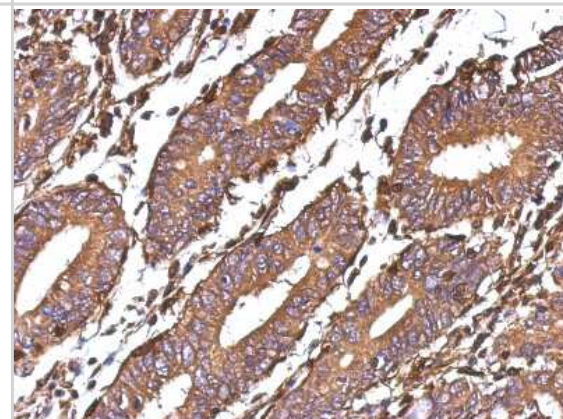
Western Blot: Galectin-1 Antibody [NBP2-16580] - Various whole cell extracts (30 ug) were separated by 15% SDS-PAGE, and the membrane was blotted with Galectin 1 antibody diluted at 1:2000. The HRP-conjugated anti-rabbit IgG antibody (NBP2-19301) was used to detect the primary antibody.



Western Blot: Galectin-1 Antibody [NBP2-16580] - Non-transfected (-) and transfected (+) HeLa whole cell extracts (30 ug) were separated by 15% SDS-PAGE, and the membrane was blotted with Galectin-1 antibody diluted at 1:10000. HRP-conjugated anti-rabbit IgG antibody was used to detect the primary antibody.



Immunohistochemistry-Paraffin: Galectin-1 Antibody [NBP2-16580] - Human colon carcinoma, using Galectin 1 antibody at 1:500 dilution. Antigen Retrieval: Trilogy™ (EDTA based, pH 8.0) buffer, 15min.





Novus Biologicals USA

10730 E. Briarwood Avenue
Centennial, CO 80112
USA
Phone: 303.730.1950
Toll Free: 1.888.506.6887
Fax: 303.730.1966
nb-customerservice@bio-techne.com

Bio-Techne Canada

21 Canmotor Ave
Toronto, ON M8Z 4E6
Canada
Phone: 905.827.6400
Toll Free: 855.668.8722
Fax: 905.827.6402
canada.inquires@bio-techne.com

Bio-Techne Ltd

19 Barton Lane
Abingdon Science Park
Abingdon, OX14 3NB, United Kingdom
Phone: (44) (0) 1235 529449
Free Phone: 0800 37 34 15
Fax: (44) (0) 1235 533420
info.EMEA@bio-techne.com

General Contact Information

www.novusbio.com
Technical Support: nb-technical@bio-techne.com
Orders: nb-customerservice@bio-techne.com
General: novus@novusbio.com

Products Related to NBP2-16580

HAF008	Goat anti-Rabbit IgG Secondary Antibody [HRP]
NB7160	Goat anti-Rabbit IgG (H+L) Secondary Antibody [HRP]
NBP2-24891	Rabbit IgG Isotype Control
NBP2-34878-10ug	Recombinant Human Galectin-1 Protein

Limitations

This product is for research use only and is not approved for use in humans or in clinical diagnosis. Primary Antibodies are guaranteed for 1 year from date of receipt.

For more information on our 100% guarantee, please visit www.novusbio.com/guarantee

Earn gift cards/discounts by submitting a review: www.novusbio.com/reviews/submit/NBP2-16580

Earn gift cards/discounts by submitting a publication using this product:
www.novusbio.com/publications

