

# Product Datasheet

## ETFA Antibody - BSA Free NBP2-16383

Unit Size: 0.1 ml

Aliquot and store at -20C or -80C. Avoid freeze-thaw cycles.

[www.novusbio.com](http://www.novusbio.com)



[technical@novusbio.com](mailto:technical@novusbio.com)

Protocols, Publications, Related Products, Reviews, Research Tools and Images at:  
[www.novusbio.com/NBP2-16383](http://www.novusbio.com/NBP2-16383)

Updated 2/23/2025 v.20.1

Earn rewards for product  
reviews and publications.

Submit a publication at [www.novusbio.com/publications](http://www.novusbio.com/publications)

Submit a review at [www.novusbio.com/reviews/destination/NBP2-16383](http://www.novusbio.com/reviews/destination/NBP2-16383)



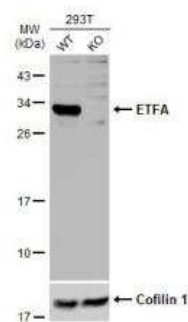
**NBP2-16383**

ETFA Antibody - BSA Free

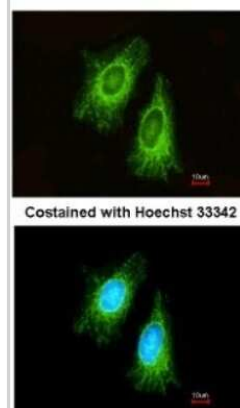
Product Information	
Unit Size	0.1 ml
Concentration	Concentrations vary lot to lot. See vial label for concentration. If unlisted please contact technical services.
Storage	Aliquot and store at -20C or -80C. Avoid freeze-thaw cycles.
Clonality	Polyclonal
Preservative	0.025% Proclin 300
Isotype	IgG
Purity	Antigen Affinity-purified
Buffer	PBS (pH 7), 20% Glycerol
Target Molecular Weight	35 kDa
Product Description	
Host	Rabbit
Gene ID	2108
Gene Symbol	ETFA
Species	Human, Mouse, Rat
Immunogen	Recombinant protein encompassing a sequence within the center region of human ETFA. The exact sequence is proprietary.
Product Application Details	
Applications	Western Blot, Immunocytochemistry/ Immunofluorescence, Immunohistochemistry, Immunohistochemistry-Paraffin, Immunoprecipitation, Knockout Validated
Recommended Dilutions	Western Blot 1:5000-1:20000, Immunohistochemistry 10 - 1:500, Immunocytochemistry/ Immunofluorescence 1:100-1:1000, Immunoprecipitation 1:100-1:500, Immunohistochemistry-Paraffin 1:100-1:1000, Knockout Validated

**Images**

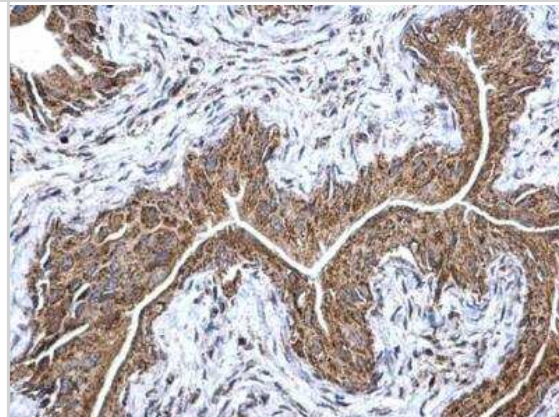
Western Blot: ETFA Antibody [NBP2-16383] - Wild-type (WT) and ETFA knockout (KO) 293T cell extracts (30 ug) were separated by 12% SDS-PAGE, and the membrane was blotted with ETFA antibody diluted at 1:1000. HRP-conjugated anti-rabbit IgG antibody was used to detect the primary antibody.



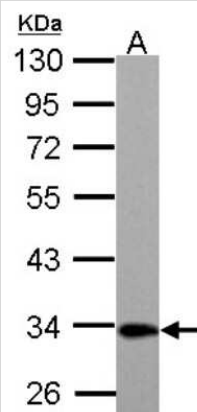
Immunocytochemistry/Immunofluorescence: ETFA Antibody [NBP2-16383] - Immunofluorescence analysis of methanol-fixed HeLa, using antibody at 1:200 dilution.



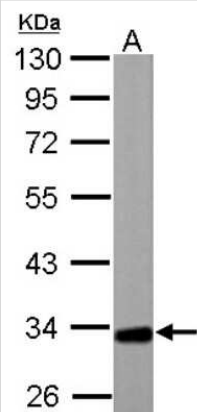
Immunohistochemistry-Paraffin: ETFA Antibody [NBP2-16383] - ETFa antibody detects ETFa protein at mitochondria on mouse urinary bladder by immunohistochemical analysis. Sample: Paraffin-embedded mouse urinary bladder. ETFa antibody dilution: 1:500.



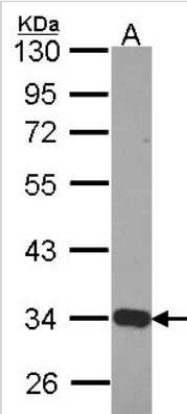
Western Blot: ETFa Antibody [NBP2-16383] - ETFa antibody detects ETFa protein by Western blot analysis. A. 30 ug C8D30 whole cell lysate/extract 10 % SDS-PAGE ETFa antibody dilution: 1:1000.



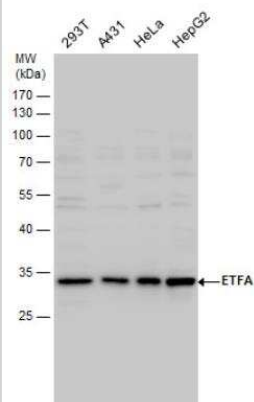
Western Blot: ETFa Antibody [NBP2-16383] - ETFa antibody detects ETFa protein by Western blot analysis. A. 30 ug PC-12 whole cell lysate/extract 10 % SDS-PAGE ETFa antibody dilution: 1:1000.



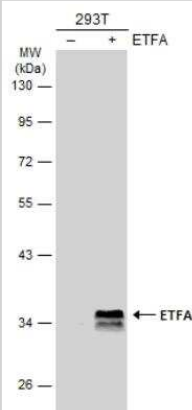
Western Blot: ETFA Antibody [NBP2-16383] - Sample (30 ug of whole cell lysate) A: Hep G2 10% SDS PAGE gel, diluted at 1:1000.



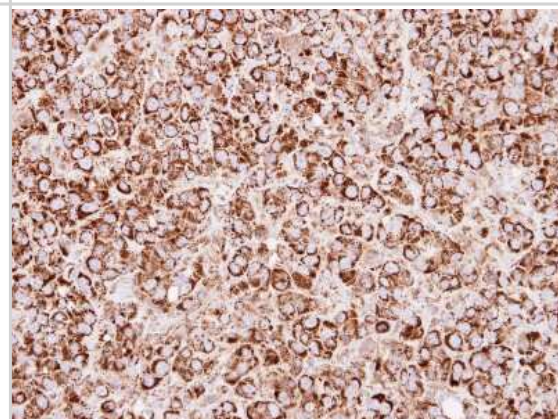
Western Blot: ETFA Antibody [NBP2-16383] - ETFA antibody detects ETFA protein by western blot analysis. Various whole cell extracts (30 ug) were separated by 12% SDS-PAGE, and the membrane was blotted with ETFA antibody diluted by 1:1000.



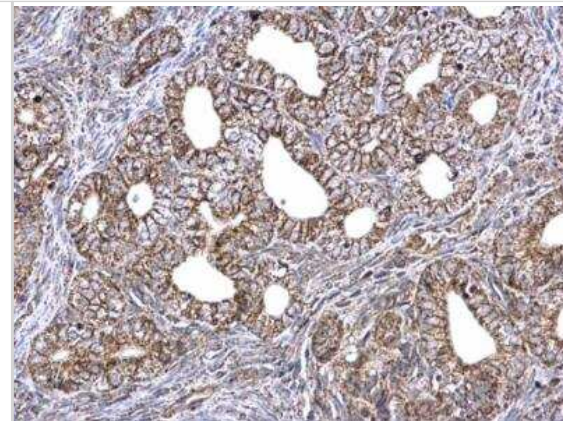
Western Blot: ETFA Antibody [NBP2-16383] - Non-transfected (-) and transfected (+) 293T whole cell extracts (30 ug) were separated by 10% SDS-PAGE, and the membrane was blotted with ETFA antibody diluted at 1:10000. HRP-conjugated anti-rabbit IgG antibody was used to detect the primary antibody.



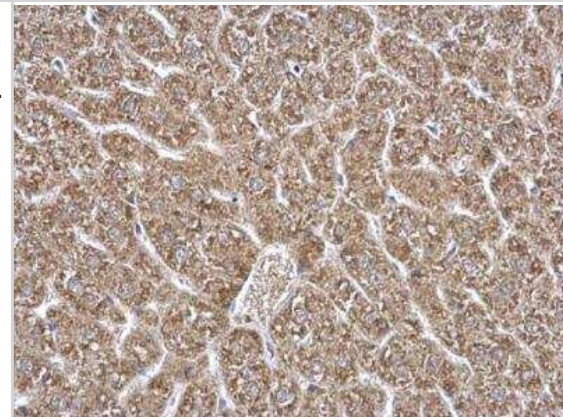
Immunohistochemistry-Paraffin: ETFA Antibody [NBP2-16383] - Immunohistochemical analysis of paraffin-embedded MCF7 xenograft, using antibody at 1:250 dilution.



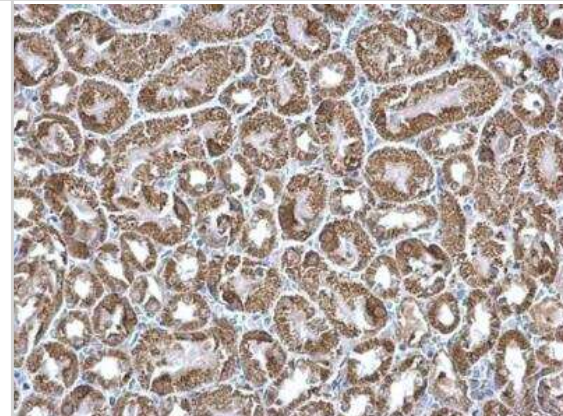
Immunohistochemistry-Paraffin: ETFA Antibody [NBP2-16383] - ETFA antibody detects ETFA protein at mitochondria on mouse cervix by immunohistochemical analysis. Sample: Paraffin-embedded mouse cervix. ETFA antibody dilution: 1:500.



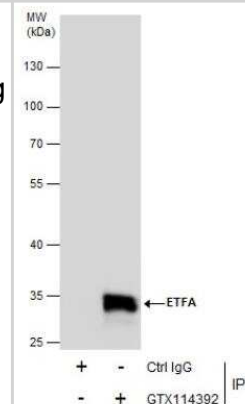
Immunohistochemistry-Paraffin: ETFA Antibody [NBP2-16383] - ETFA antibody detects ETFA protein at mitochondria on mouse kidney by immunohistochemical analysis. Sample: Paraffin-embedded mouse liver. ETFA antibody dilution: 1:500.



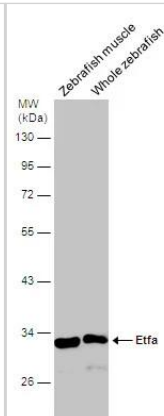
Immunohistochemistry-Paraffin: ETFA Antibody [NBP2-16383] - ETFA antibody detects ETFA protein at mitochondria on mouse brain stem by immunohistochemical analysis. Sample: Paraffin-embedded mouse kidney. ETFA antibody dilution: 1:500.



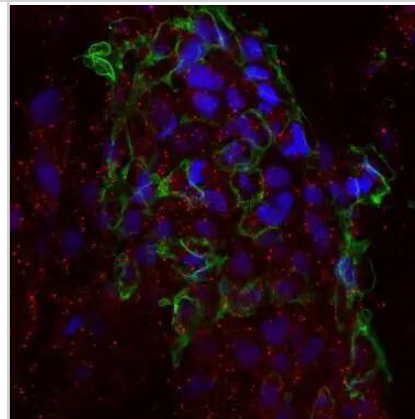
Immunoprecipitation: ETFA Antibody [NBP2-16383] - Immunoprecipitation of ETFA protein from HepG2 whole cell extracts using 5 µg of ETFA antibody. Western blot analysis was performed using ETFA antibody.



Western Blot: ETFA Antibody [NBP2-16383] - Various tissue extracts (30 ug) were separated by 10% SDS-PAGE, and the membrane was blotted with ETFA antibody (NBP2-16383) diluted at 1:500.



Immunohistochemistry: ETFA Antibody [NBP2-16383] - Immunohistochemical analysis of agarose-embedded zebrafish embryo, using ETFA antibody (NBP2-16383) at 1:100 dilution. (This image was provided courtesy of the Schilling Lab at UC, Irvine.)





### **Novus Biologicals USA**

10730 E. Briarwood Avenue  
Centennial, CO 80112  
USA  
Phone: 303.730.1950  
Toll Free: 1.888.506.6887  
Fax: 303.730.1966  
nb-customerservice@bio-techne.com

### **Bio-Techne Canada**

21 Canmotor Ave  
Toronto, ON M8Z 4E6  
Canada  
Phone: 905.827.6400  
Toll Free: 855.668.8722  
Fax: 905.827.6402  
canada.inquires@bio-techne.com

### **Bio-Techne Ltd**

19 Barton Lane  
Abingdon Science Park  
Abingdon, OX14 3NB, United Kingdom  
Phone: (44) (0) 1235 529449  
Free Phone: 0800 37 34 15  
Fax: (44) (0) 1235 533420  
info.EMEA@bio-techne.com

### **General Contact Information**

www.novusbio.com  
Technical Support: nb-technical@bio-techne.com  
Orders: nb-customerservice@bio-techne.com  
General: novus@novusbio.com

### **Products Related to NBP2-16383**

---

HAF008	Goat anti-Rabbit IgG Secondary Antibody [HRP]
NB7160	Goat anti-Rabbit IgG (H+L) Secondary Antibody [HRP]
NBP2-24891	Rabbit IgG Isotype Control
H00002108-P01-10ug	Recombinant Human ETFA GST (N-Term) Protein

---

### **Limitations**

This product is for research use only and is not approved for use in humans or in clinical diagnosis. Primary Antibodies are guaranteed for 1 year from date of receipt.

For more information on our 100% guarantee, please visit [www.novusbio.com/guarantee](http://www.novusbio.com/guarantee)

Earn gift cards/discounts by submitting a review: [www.novusbio.com/reviews/submit/NBP2-16383](http://www.novusbio.com/reviews/submit/NBP2-16383)

Earn gift cards/discounts by submitting a publication using this product:  
[www.novusbio.com/publications](http://www.novusbio.com/publications)

