

Product Datasheet

ECHS1 Antibody - BSA Free

NBP2-16264

Unit Size: 0.1 ml

Aliquot and store at -20C or -80C. Avoid freeze-thaw cycles.

www.novusbio.com



technical@novusbio.com

Protocols, Publications, Related Products, Reviews, Research Tools and Images at:
www.novusbio.com/NBP2-16264

Updated 9/9/2025 v.20.1

Earn rewards for product
reviews and publications.

Submit a publication at www.novusbio.com/publications

Submit a review at www.novusbio.com/reviews/destination/NBP2-16264



NBP2-16264

ECHS1 Antibody - BSA Free

Product Information

Unit Size	0.1 ml
Concentration	Concentrations vary lot to lot. See vial label for concentration. If unlisted please contact technical services.
Storage	Aliquot and store at -20C or -80C. Avoid freeze-thaw cycles.
Clonality	Polyclonal
Preservative	0.01% Thimerosal
Isotype	IgG
Purity	Antigen Affinity-purified
Buffer	0.1M Tris (pH 7), 0.1M Glycine, 20% Glycerol
Target Molecular Weight	31 kDa

Product Description

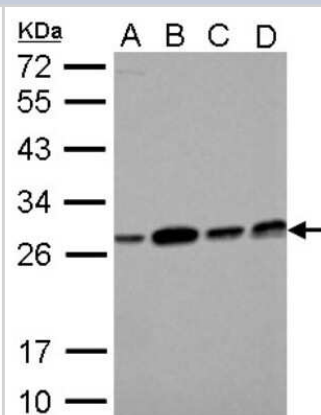
Description	Novus Biologicals Rabbit ECHS1 Antibody - BSA Free (NBP2-16264) is a polyclonal antibody validated for use in IHC, WB, ICC/IF and IP. All Novus Biologicals antibodies are covered by our 100% guarantee.
Host	Rabbit
Gene ID	1892
Gene Symbol	ECHS1
Species	Human, Mouse
Immunogen	Recombinant protein encompassing a sequence within the center region of human ECHS1. The exact sequence is proprietary.

Product Application Details

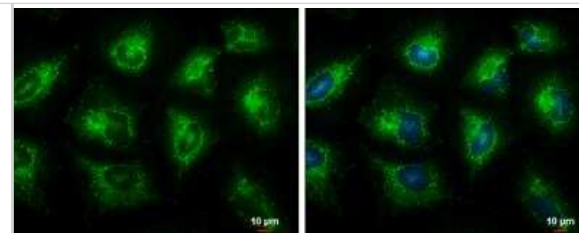
Applications	Western Blot, Immunohistochemistry-Paraffin, Immunocytochemistry/Immunofluorescence, Immunohistochemistry, Immunoprecipitation
Recommended Dilutions	Western Blot 1:500-1:3000, Immunohistochemistry 10 - 1:500, Immunocytochemistry/ Immunofluorescence 1:100-1:1000, Immunoprecipitation 1:100-1:500, Immunohistochemistry-Paraffin 1:100-1:1000

Images

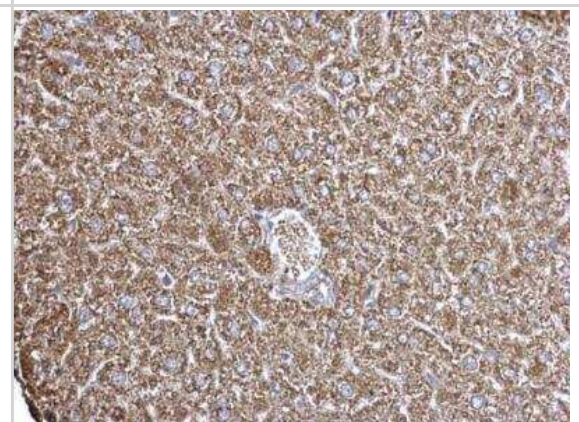
Western Blot: ECHS1 Antibody [NBP2-16264] - ECHS1 antibody detects ECHS1 protein by Western blot analysis. A. 30 ug NT2D1 whole cell lysate/extract B. 30 ug PC-3 whole cell lysate/extract C. 30 ug U87-MG whole cell lysate/extract D. 30 ug SK-N-SH whole cell lysate/extract 12 % SDS-PAGE ECHS1 antibody d



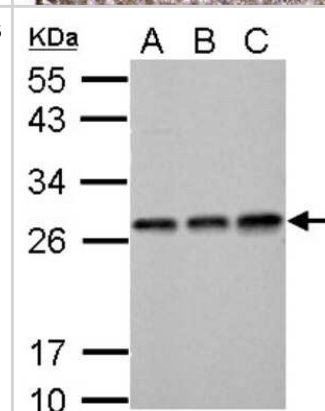
Immunocytochemistry/Immunofluorescence: ECHS1 Antibody [NBP2-16264] - ECHS1 antibody detects ECHS1 protein at mitochondria by immunofluorescent analysis. Sample: HeLa cells were fixed in ice-cold MeOH for 5 min. Green: ECHS1 protein stained by ECHS1 antibody diluted at 1:500. Blue: Hoechst 33342 staining. Scale bar = 10 μ m.



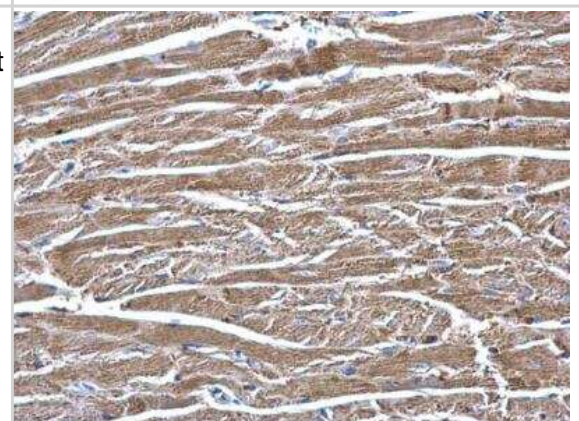
Immunohistochemistry-Paraffin: ECHS1 Antibody [NBP2-16264] - ECHS1 antibody detects ECHS1 protein at mitochondria on mouse liver by immunohistochemical analysis. Sample: Paraffin-embedded mouse liver. ECHS1 antibody dilution: 1:500.



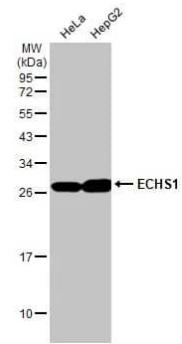
Western Blot: ECHS1 Antibody [NBP2-16264] - ECHS1 antibody detects ECHS1 protein by Western blot analysis. A. 30 μ g Neuro2A whole cell lysate/extract B. 30 μ g GL261 whole cell lysate/extract C. 30 μ g C8D30 whole cell lysate/extract 12 % SDS-PAGE ECHS1 antibody dilution: 1:1000.



Immunohistochemistry-Paraffin: ECHS1 Antibody [NBP2-16264] - ECHS1 antibody detects ECHS1 protein at mitochondria on mouse heart by immunohistochemical analysis. Sample: Paraffin-embedded mouse heart. ECHS1 antibody dilution: 1:500.



Western Blot: ECHS1 Antibody [NBP2-16264] - Various whole cell extracts (30 ug) were separated by 12% SDS-PAGE, and the membrane was blotted with ECHS1 antibody (NBP2-16264) diluted at 1:500. The HRP-conjugated anti-rabbit IgG antibody was used to detect the primary antibody.





Novus Biologicals USA

10730 E. Briarwood Avenue
Centennial, CO 80112
USA
Phone: 303.730.1950
Toll Free: 1.888.506.6887
Fax: 303.730.1966
nb-customerservice@bio-techne.com

Bio-Techne Canada

21 Canmotor Ave
Toronto, ON M8Z 4E6
Canada
Phone: 905.827.6400
Toll Free: 855.668.8722
Fax: 905.827.6402
canada.inquires@bio-techne.com

Bio-Techne Ltd

19 Barton Lane
Abingdon Science Park
Abingdon, OX14 3NB, United Kingdom
Phone: (44) (0) 1235 529449
Free Phone: 0800 37 34 15
Fax: (44) (0) 1235 533420
info.EMEA@bio-techne.com

General Contact Information

www.novusbio.com
Technical Support: nb-technical@bio-techne.com
Orders: nb-customerservice@bio-techne.com
General: novus@novusbio.com

Products Related to NBP2-16264

HAF008	Goat anti-Rabbit IgG Secondary Antibody [HRP]
NB7160	Goat anti-Rabbit IgG (H+L) Secondary Antibody [HRP]
NBP2-24891	Rabbit IgG Isotype Control
NBP2-59588-20ug	Recombinant Human ECHS1 His Protein

Limitations

This product is for research use only and is not approved for use in humans or in clinical diagnosis. Primary Antibodies are guaranteed for 1 year from date of receipt.

For more information on our 100% guarantee, please visit www.novusbio.com/guarantee

Earn gift cards/discounts by submitting a review: www.novusbio.com/reviews/submit/NBP2-16264

Earn gift cards/discounts by submitting a publication using this product:
www.novusbio.com/publications

