

# Product Datasheet

## E-Cadherin Antibody NBP2-16258

Unit Size: 0.1 ml

Aliquot and store at -20C or -80C. Avoid freeze-thaw cycles.

[www.novusbio.com](http://www.novusbio.com)



[technical@novusbio.com](mailto:technical@novusbio.com)

### Publications: 3

Protocols, Publications, Related Products, Reviews, Research Tools and Images at:  
[www.novusbio.com/NBP2-16258](http://www.novusbio.com/NBP2-16258)

Updated 2/6/2025 v.20.1

Earn rewards for product  
reviews and publications.

Submit a publication at [www.novusbio.com/publications](http://www.novusbio.com/publications)

Submit a review at [www.novusbio.com/reviews/destination/NBP2-16258](http://www.novusbio.com/reviews/destination/NBP2-16258)



**NBP2-16258**

## E-Cadherin Antibody

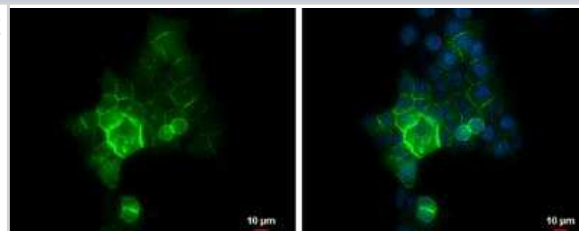
| Product Information     |  |
|-------------------------|--|
| Unit Size               | 0.1 ml   |
| Concentration           | Concentrations vary lot to lot. See vial label for concentration. If unlisted please contact technical services. |
| Storage                 | Aliquot and store at -20C or -80C. Avoid freeze-thaw cycles.   |
| Clonality               | Polyclonal   |
| Preservative            | 0.025% Proclin 300   |
| Isotype                 | IgG  |
| Purity                  | Antigen Affinity-purified  |
| Buffer                  | PBS, 1% BSA, 20% Glycerol  |
| Target Molecular Weight | 97 kDa   |

| Product Description |  |
|---------------------|--|
| Host                | Rabbit   |
| Gene ID             | 999  |
| Gene Symbol         | CDH1   |
| Species             | Human, Mouse, Rat, Canine, Zebrafish   |
| Reactivity Notes    | Bovine (82%), Pig (83%).   |
| Marker              | Epithelial Cell Marker, Adherens Junctions Marker  |
| Immunogen           | Recombinant protein encompassing a sequence within the center region of human E-Cadherin. The exact sequence is proprietary. |

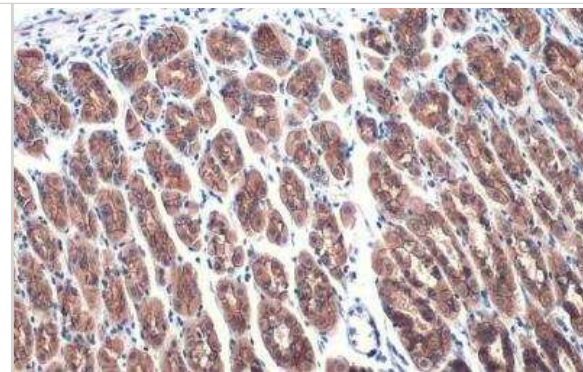
| Product Application Details |  |
|-----------------------------|--|
| Applications                | Western Blot, Immunocytochemistry/ Immunofluorescence, Immunohistochemistry, Immunohistochemistry-Paraffin, Immunoprecipitation, Proximity Ligation Assay, Immunohistochemistry Whole-Mount  |
| Recommended Dilutions       | Western Blot 1:500-1:10000, Immunohistochemistry 1:100-1:1000, Immunocytochemistry/ Immunofluorescence 1:100-1:1000, Immunoprecipitation 1:100-1:500, Immunohistochemistry-Paraffin 1:100-1:1000, Proximity Ligation Assay Assay dependent, Immunohistochemistry Whole-Mount Assay dependent |

**Images**

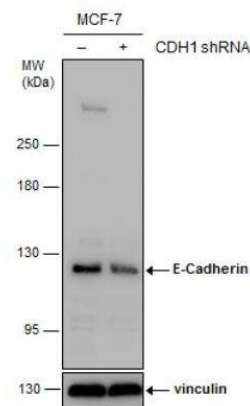
Immunocytochemistry/Immunofluorescence: E-Cadherin Antibody [NBP2-16258] - HCT 116 cells were fixed in 4% paraformaldehyde at RT for 15 min. Green: E-Cadherin protein stained by E-Cadherin antibody diluted at 1:500. Blue: Hoechst 33342 staining. Scale bar = 10  $\mu$ m.



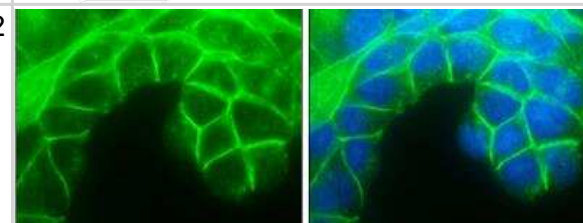
Immunohistochemistry-Paraffin: E-Cadherin Antibody [NBP2-16258] - Mouse stomach. E-Cadherin stained by E-Cadherin antibody diluted at 1:500. Antigen Retrieval: Citrate buffer, pH 6.0, 15 min.



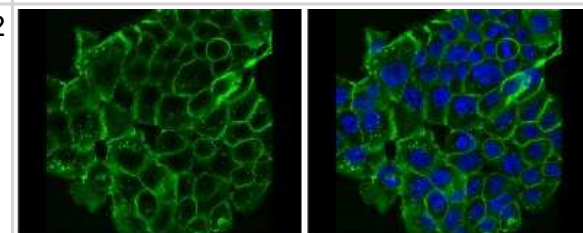
Western Blot: E-Cadherin Antibody [NBP2-16258] - Non-transfected (-) and transfected (+) MCF-7 whole cell extracts (30 ug) were separated by 5% SDS-PAGE, and the membrane was blotted with E-Cadherin antibody.



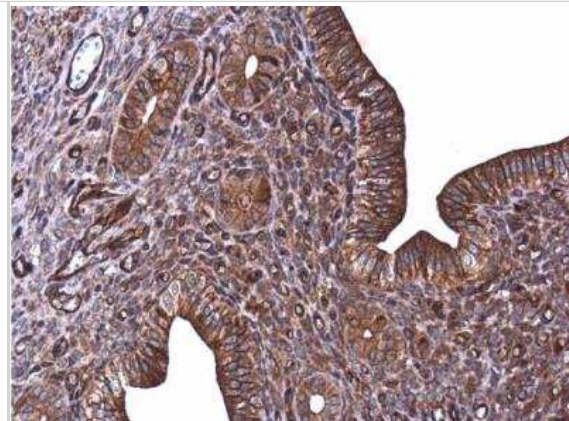
Immunocytochemistry/Immunofluorescence: E-Cadherin Antibody [NBP2-16258] - MCF7 cells were fixed in 4% paraformaldehyde at RT for 15 min. Green: E-Cadherin protein stained by E-Cadherin antibody diluted at 1:500. Blue: Hoechst 33342 staining.



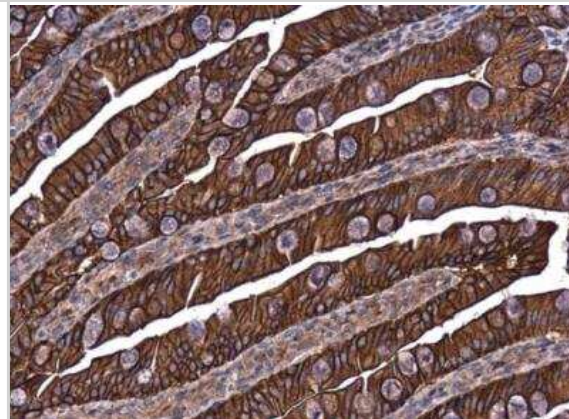
Immunocytochemistry/Immunofluorescence: E-Cadherin Antibody [NBP2-16258] - A431 cells were fixed in 4% paraformaldehyde at RT for 15 min. Green: E-Cadherin protein stained by E-Cadherin antibody diluted at 1:500. Blue: Hoechst 33342 staining.



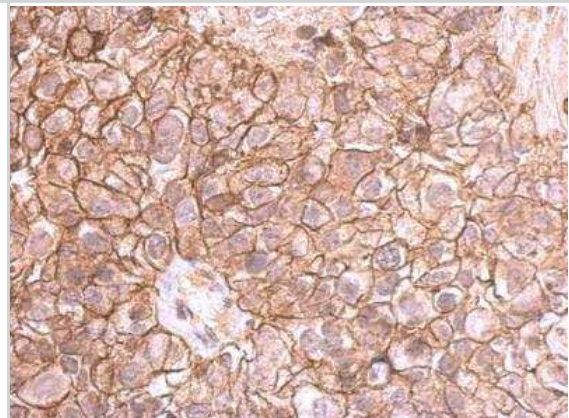
Immunohistochemistry-Paraffin: E-Cadherin Antibody [NBP2-16258] - Mouse cervix. E-Cadherin antibody diluted at 1:500. Antigen Retrieval: Citrate buffer, pH 6.0, 15 min.



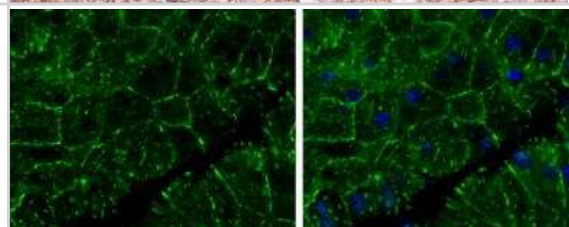
Immunohistochemistry-Paraffin: E-Cadherin Antibody [NBP2-16258] - Rat intestine. E-Cadherin antibody diluted at 1:500. Antigen Retrieval: Citrate buffer, pH 6.0, 15 min.



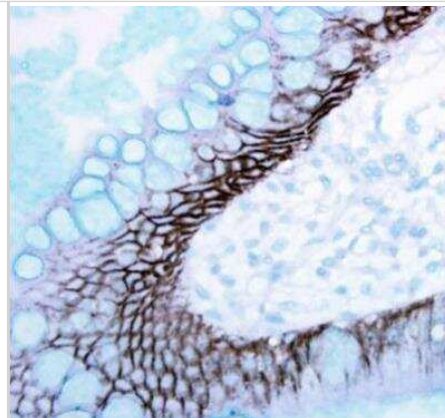
Immunohistochemistry-Paraffin: E-Cadherin Antibody [NBP2-16258] - Breast cancer. E-cadherin antibody dilution: 1:500. Antigen Retrieval: Trilogy™ (EDTA based, pH 8.0) buffer, 15min.



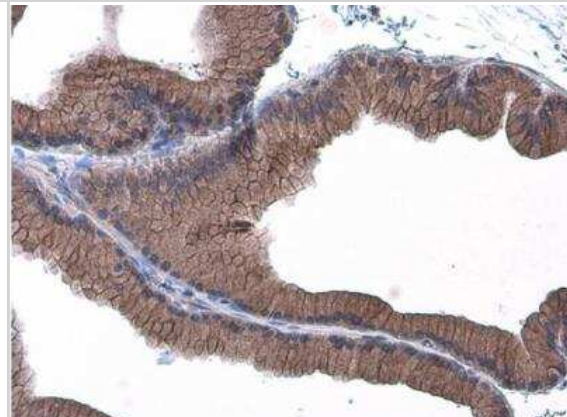
Immunohistochemistry-Paraffin: E-Cadherin Antibody [NBP2-16258] - Mouse pancreas. E-Cadherin antibody diluted at 1:400. Antigen Retrieval: Citrate buffer, pH 6.0, 15 min.



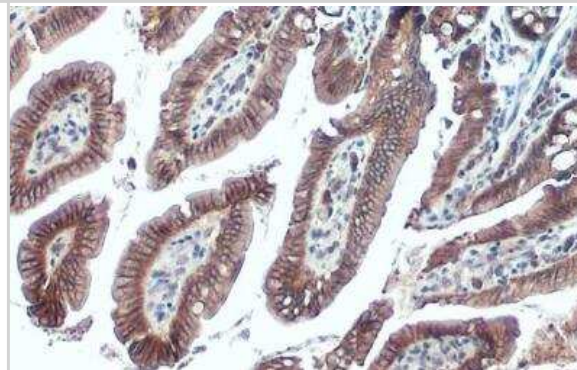
Immunohistochemistry-Paraffin: E-Cadherin Antibody [NBP2-16258] - Analysis of paraffin-embedded human ulcerative colitis tissue using E-Cadherin antibody.



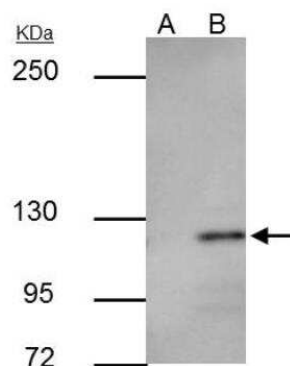
Immunohistochemistry-Paraffin: E-Cadherin Antibody [NBP2-16258] - Rat prostate. E-Cadherin antibody diluted at 1:500. Antigen Retrieval: Citrate buffer, pH 6.0, 15 min.



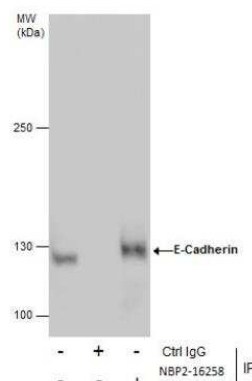
Immunohistochemistry-Paraffin: E-Cadherin Antibody [NBP2-16258] - Mouse intestine. E-Cadherin stained by E-Cadherin antibody diluted at 1:500. Antigen Retrieval: Citrate buffer, pH 6.0, 15 min.



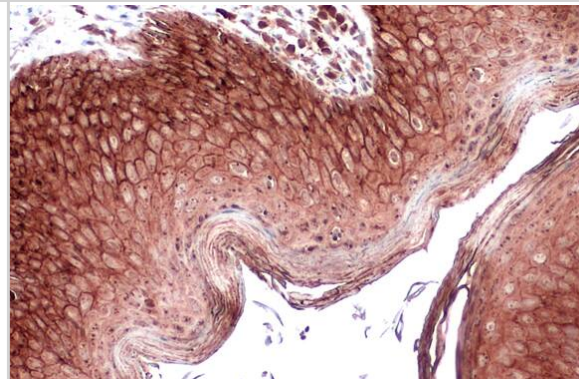
Immunoprecipitation: E-Cadherin Antibody [NBP2-16258] - MCF-7 whole cell extract A. Control with 3 ug of preimmune Rabbit IgG B. Immunoprecipitation of E-cadherin protein by 3 ug E-cadherin antibody 5 % SDS-PAGE The immunoprecipitated E-cadherin protein was detected by E-cadherin antibody diluted at 1:500. [EasyBlot anti-rabbit IgG was used as a secondary reagent]



**Immunoprecipitation: E-Cadherin Antibody [NBP2-16258]** - Immunoprecipitation of E-Cadherin protein from MCF-7 whole cell extracts using 5 ug of E-Cadherin antibody. Western blot analysis was performed using E-Cadherin antibody. EasyBlot anti-Rabbit IgG was used as a secondary reagent.

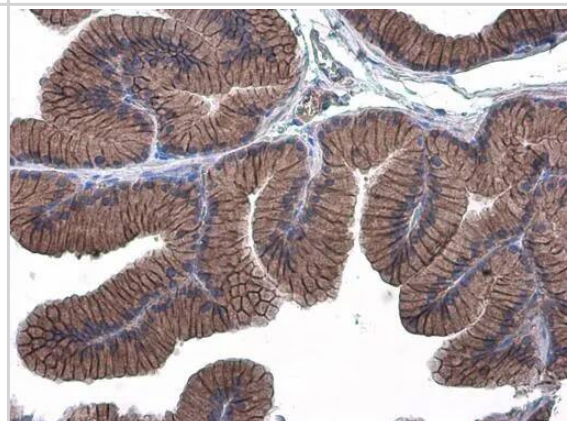


**Immunohistochemistry-Paraffin: E-Cadherin Antibody [NBP2-16258]** - E-Cadherin antibody detects E-Cadherin protein at cell membrane and cytoplasm by immunohistochemical analysis. Sample: Paraffin-embedded dog skin. E-Cadherin stained by E-Cadherin antibody (NBP2-16258) diluted at 1:500. Antigen Retrieval: Citrate buffer, pH 6.0, 15 min

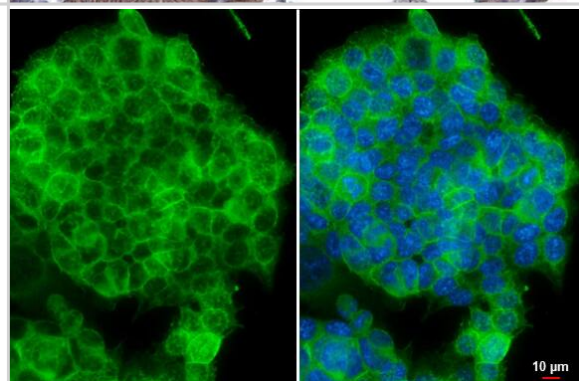


**Immunohistochemistry-Paraffin: E-Cadherin Antibody [NBP2-16258]** - E-Cadherin antibody detects E-Cadherin protein at cell membrane in rat prostate by immunohistochemical analysis. Sample: Paraffin-embedded rat prostate. E-Cadherin antibody (NBP2-16258) diluted at 1:500.

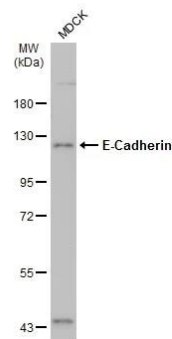
Antigen Retrieval: Citrate buffer, pH 6.0, 15 min



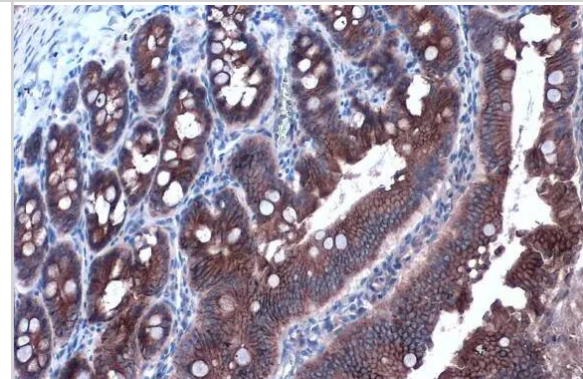
**Immunocytochemistry/ Immunofluorescence: E-Cadherin Antibody [NBP2-16258]** - E-Cadherin antibody detects E-Cadherin protein at cell membrane by immunofluorescent analysis. Sample: HCT116 cells were fixed in 4% paraformaldehyde at RT for 15 min. Green: E-Cadherin stained by E-Cadherin antibody (NBP2-16258) diluted at 1:500. Blue: Fluoroshield with DAPI. Scale bar= 10 um.



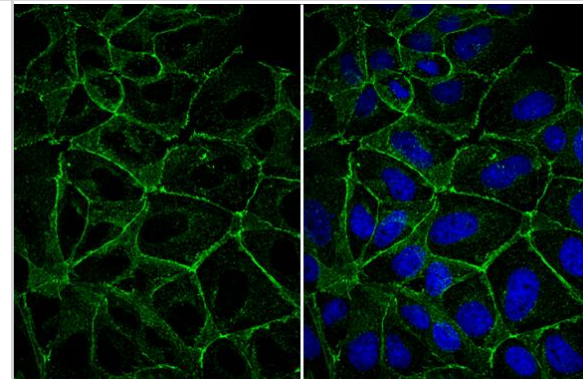
Western Blot: E-Cadherin Antibody [NBP2-16258] - Whole cell extracts (30 ug) was separated by 7.5% SDS-PAGE, and the membrane was blotted with E-Cadherin antibody (NBP2-16258) diluted at 1:10000. The HRP-conjugated anti-rabbit IgG antibody was used to detect the primary antibody.



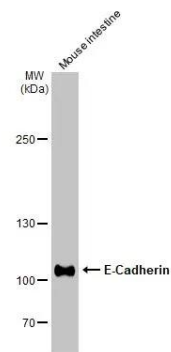
Immunohistochemistry-Paraffin: E-Cadherin Antibody [NBP2-16258] - E-Cadherin antibody detects E-Cadherin protein at cell membrane and cytoplasm by immunohistochemical analysis. Sample: Paraffin-embedded rat duodenum. E-Cadherin stained by E-Cadherin antibody (NBP2-16258) diluted at 1:1000. Antigen Retrieval: Citrate buffer, pH 6.0, 15 min



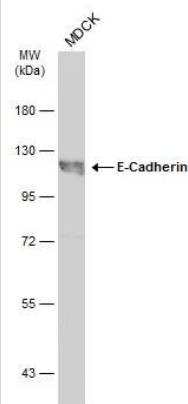
Immunocytochemistry/ Immunofluorescence: E-Cadherin Antibody [NBP2-16258] - E-Cadherin antibody detects E-Cadherin protein at cell membrane by immunofluorescent analysis. Sample: MDCK cells were fixed in 4% paraformaldehyde at RT for 15 min. Green: E-Cadherin stained by E-Cadherin antibody (NBP2-16258) diluted at 1:500.



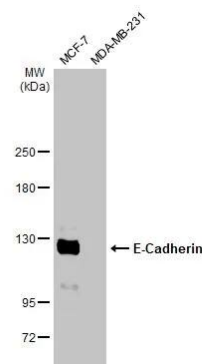
Western Blot: E-Cadherin Antibody [NBP2-16258] - Mouse tissue extract (50 ug) was separated by 5% SDS-PAGE, and the membrane was blotted with E-Cadherin antibody (NBP2-16258) diluted at 1:2000. The HRP-conjugated anti-rabbit IgG antibody was used to detect the primary antibody.



Western Blot: E-Cadherin Antibody [NBP2-16258] - Whole cell extract (30 ug) was separated by 7.5% SDS-PAGE, and the membrane was blotted with E-Cadherin antibody (NBP2-16258) diluted at 1:7000. The HRP-conjugated anti-rabbit IgG antibody was used to detect the primary antibody.



Western Blot: E-Cadherin Antibody [NBP2-16258] - Various whole cell extracts (30 ug) were separated by 5% SDS-PAGE, and the membrane was blotted with E-Cadherin antibody (NBP2-16258) diluted at 1:2000. The HRP-conjugated anti-rabbit IgG antibody was used to detect the primary antibody.



## Publications

R Lehmann, MM Müller, TE Klassert, D Driesch, M Stock, A Heinrich, T Conrad, C Moore, UK Schier, R Guthke, H Slevogt Differential regulation of the transcriptomic and secretomic landscape of sensor and effector functions of human airway epithelial cells *Mucosal Immunol*, 2018-01-03;0(0):. 2018-01-03 [PMID: 29297499]

Taghavi S, Jackson-Weaver O, Abdullah S Et al. Interleukin-22 mitigates acute respiratory distress syndrome (ARDS) *PloS one* 2021-10-01 [PMID: 34597299] (IHC-Fr, Mouse)

Tsuda A, Donaghey TC, Konduru NV, et al. Age-Dependent Translocation of Gold Nanoparticles across the Air-Blood Barrier *ACS Nano* 2019-09-24 [PMID: 31397554] (WB, Rat)





### **Novus Biologicals USA**

10730 E. Briarwood Avenue  
Centennial, CO 80112  
USA  
Phone: 303.730.1950  
Toll Free: 1.888.506.6887  
Fax: 303.730.1966  
nb-customerservice@bio-techne.com

### **Bio-Techne Canada**

21 Canmotor Ave  
Toronto, ON M8Z 4E6  
Canada  
Phone: 905.827.6400  
Toll Free: 855.668.8722  
Fax: 905.827.6402  
canada.inquires@bio-techne.com

### **Bio-Techne Ltd**

19 Barton Lane  
Abingdon Science Park  
Abingdon, OX14 3NB, United Kingdom  
Phone: (44) (0) 1235 529449  
Free Phone: 0800 37 34 15  
Fax: (44) (0) 1235 533420  
info.EMEA@bio-techne.com

### **General Contact Information**

www.novusbio.com  
Technical Support: nb-technical@bio-techne.com  
Orders: nb-customerservice@bio-techne.com  
General: novus@novusbio.com

### **Products Related to NBP2-16258**

---

|               |   |
|---------------|---|
| HAF008        | Goat anti-Rabbit IgG Secondary Antibody [HRP]       |
| NB7160        | Goat anti-Rabbit IgG (H+L) Secondary Antibody [HRP] |
| NBP2-24891    | Rabbit IgG Isotype Control                          |
| NBP2-34475PEP | E-Cadherin Recombinant Protein Antigen              |

---

### **Limitations**

This product is for research use only and is not approved for use in humans or in clinical diagnosis. Primary Antibodies are guaranteed for 1 year from date of receipt.

For more information on our 100% guarantee, please visit [www.novusbio.com/guarantee](http://www.novusbio.com/guarantee)

Earn gift cards/discounts by submitting a review: [www.novusbio.com/reviews/submit/NBP2-16258](http://www.novusbio.com/reviews/submit/NBP2-16258)

Earn gift cards/discounts by submitting a publication using this product:  
[www.novusbio.com/publications](http://www.novusbio.com/publications)

