

Product Datasheet

Dopamine D1R/DRD1 Antibody - BSA Free NBP2-16213

Unit Size: 0.1 ml

Aliquot and store at -20C or -80C. Avoid freeze-thaw cycles.

www.novusbio.com



technical@novusbio.com

Reviews: 1 Publications: 6

Protocols, Publications, Related Products, Reviews, Research Tools and Images at:
www.novusbio.com/NBP2-16213

Updated 2/23/2025 v.20.1

Earn rewards for product
reviews and publications.

Submit a publication at www.novusbio.com/publications

Submit a review at www.novusbio.com/reviews/destination/NBP2-16213



NBP2-16213

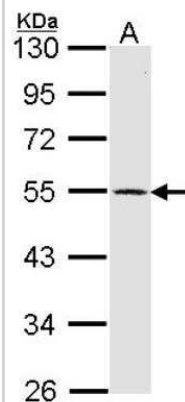
Dopamine D1R/DRD1 Antibody - BSA Free

Product Information	
Unit Size	0.1 ml
Concentration	Concentrations vary lot to lot. See vial label for concentration. If unlisted please contact technical services.
Storage	Aliquot and store at -20C or -80C. Avoid freeze-thaw cycles.
Clonality	Polyclonal
Preservative	0.01% Thimerosal
Isotype	IgG
Purity	Protein A purified
Buffer	PBS 40% Glycerol
Target Molecular Weight	49 kDa
Product Description	
Host	Rabbit
Gene ID	1812
Gene Symbol	DRD1
Species	Human, Mouse, Rat
Immunogen	Carrier-protein conjugated synthetic peptide encompassing a sequence within the C-terminus region of human Dopamine D1R/DRD1. The exact sequence is proprietary.
Product Application Details	
Applications	Western Blot, Immunocytochemistry/ Immunofluorescence, Immunohistochemistry, Immunohistochemistry-Frozen, Immunohistochemistry-Paraffin
Recommended Dilutions	Western Blot 1:500-1:3000, Immunohistochemistry 1:100-1:1000, Immunocytochemistry/ Immunofluorescence 1:100-1:1000, Immunohistochemistry-Paraffin 1:100-1:1000, Immunohistochemistry-Frozen 1:100-1:1000

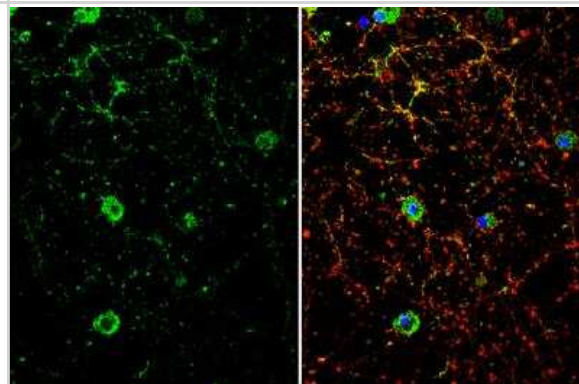


Images

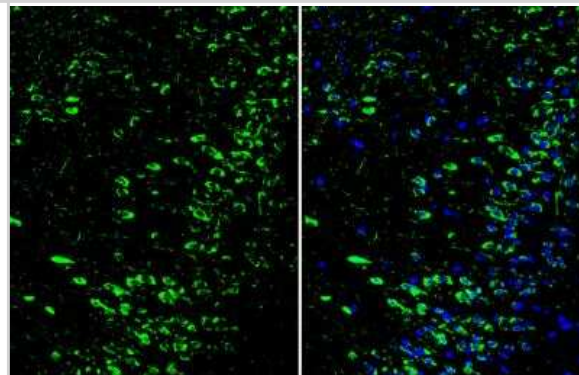
Western Blot: Dopamine D1R/DRD1 Antibody [NBP2-16213] - Sample (30 ug of whole cell lysate) A: IMR32 10% SDS PAGE diluted at 1:1000



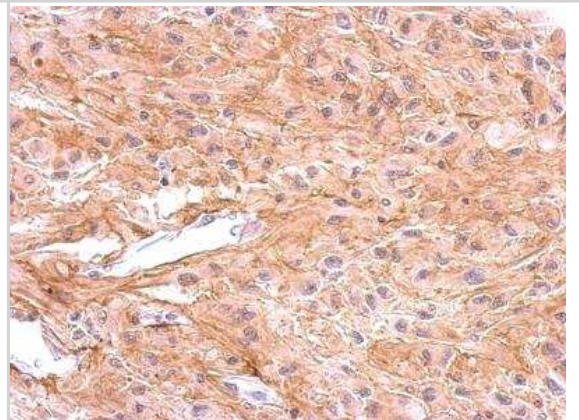
Immunocytochemistry/Immunofluorescence: Dopamine D1R/DRD1 Antibody [NBP2-16213] - DIV10 rat E18 primary cortical neuron cells were fixed in 4% paraformaldehyde at RT for 15 min. Green: Dopamine Receptor D1 stained by Dopamine Receptor D1 antibody [C2C3], C-term diluted at 1:500. Red: beta Tubulin 3/ Tuj1, stained by beta Tubulin 3/ Tuj1 antibody [11710] diluted at 1:500. Blue: Fluoroshield with DAPI.



Immunohistochemistry-Frozen: Dopamine D1R/DRD1 Antibody [NBP2-16213] - Frozen-sectioned mouse cerebral cortex. Green: Dopamine Receptor D1 stained by Dopamine Receptor D1 antibody [C2C3], C-term diluted at 1:250. Blue: Fluoroshield with DAPI.



Immunohistochemistry-Paraffin: Dopamine D1R/DRD1 Antibody [NBP2-16213] - U373 xenograft, using Dopamine Receptor D1 antibody at 1:500 dilution. Antigen Retrieval: Trilogy™ (EDTA based, pH 8.0) buffer, 15min.



Publications

Brooke A Quinton, Khashayar Arianpour, Noah M Yaffe, William S Tierney, Michael S Benninger, Paul C Bryson
Reassessing the Role of Phonomicrosurgery and Smoking Status in the Management of Reinke's Edema. *The Laryngoscope* 2023-11-27 [PMID: 38009572]

Madhamanchi K, Madhamanchi P, Jayalakshmi S et al. Dopamine and Glutamate Crosstalk Worsen the Seizure Outcome in TLE-HS Patients *Molecular neurobiology* 2023-05-20 [PMID: 37209264]

Zhang J, Peng Y, Liu C et al. Dopamine D1-receptor-expressing pathway from the nucleus accumbens to ventral pallidum-mediated sevoflurane anesthesia in mice *CNS neuroscience & therapeutics* 2023-05-19 [PMID: 37208941]

Bhowmick S, Malat A, Caruso D Et Al. Intercellular Adhesion Molecule-1-Induced Posttraumatic Brain Injury Neuropathology in the Prefrontal Cortex and Hippocampus Leads to Sensorimotor Function Deficits and Psychological Stress *eNeuro* 2021-07-16 [PMID: 34135004] (WB)

Yan Y, Pan J, Chen Y et al. Increased dopamine and its receptor dopamine receptor D1 promote tumor growth in human hepatocellular carcinoma *Cancer Commun (Lond)* 2020-10-05 [PMID: 33017522] (WB, Human)

Kumar SP, Babu PP Aberrant Dopamine Receptor Signaling Plays Critical Role in the Impairment of Striatal Neurons in Experimental Cerebral Malaria *Mol. Neurobiol.* 2020-08-24 [PMID: 32833186] (IF/IHC)





Novus Biologicals USA

10730 E. Briarwood Avenue
Centennial, CO 80112
USA
Phone: 303.730.1950
Toll Free: 1.888.506.6887
Fax: 303.730.1966
nb-customerservice@bio-techne.com

Bio-Techne Canada

21 Canmotor Ave
Toronto, ON M8Z 4E6
Canada
Phone: 905.827.6400
Toll Free: 855.668.8722
Fax: 905.827.6402
canada.inquires@bio-techne.com

Bio-Techne Ltd

19 Barton Lane
Abingdon Science Park
Abingdon, OX14 3NB, United Kingdom
Phone: (44) (0) 1235 529449
Free Phone: 0800 37 34 15
Fax: (44) (0) 1235 533420
info.EMEA@bio-techne.com

General Contact Information

www.novusbio.com
Technical Support: nb-technical@bio-techne.com
Orders: nb-customerservice@bio-techne.com
General: novus@novusbio.com

Products Related to NBP2-16213

HAF008	Goat anti-Rabbit IgG Secondary Antibody [HRP]
NB7160	Goat anti-Rabbit IgG (H+L) Secondary Antibody [HRP]
NBP2-24891	Rabbit IgG Isotype Control
NBP3-17644PEP	Dopamine D1R/DRD1 Recombinant Protein Antigen

Limitations

This product is for research use only and is not approved for use in humans or in clinical diagnosis. Primary Antibodies are guaranteed for 1 year from date of receipt.

For more information on our 100% guarantee, please visit www.novusbio.com/guarantee

Earn gift cards/discounts by submitting a review: www.novusbio.com/reviews/submit/NBP2-16213

Earn gift cards/discounts by submitting a publication using this product:
www.novusbio.com/publications

