

# Product Datasheet

## Cyclin D1 Antibody - BSA Free

### NBP2-16054

Unit Size: 0.1 ml

Aliquot and store at -20C or -80C. Avoid freeze-thaw cycles.

[www.novusbio.com](http://www.novusbio.com)



[technical@novusbio.com](mailto:technical@novusbio.com)

#### Publications: 1

Protocols, Publications, Related Products, Reviews, Research Tools and Images at:  
[www.novusbio.com/NBP2-16054](http://www.novusbio.com/NBP2-16054)

Updated 2/23/2025 v.20.1

Earn rewards for product  
reviews and publications.

Submit a publication at [www.novusbio.com/publications](http://www.novusbio.com/publications)

Submit a review at [www.novusbio.com/reviews/destination/NBP2-16054](http://www.novusbio.com/reviews/destination/NBP2-16054)



**NBP2-16054**

Cyclin D1 Antibody - BSA Free

**Product Information**

<b>Unit Size</b>	0.1 ml
<b>Concentration</b>	Concentrations vary lot to lot. See vial label for concentration. If unlisted please contact technical services.
<b>Storage</b>	Aliquot and store at -20C or -80C. Avoid freeze-thaw cycles.
<b>Clonality</b>	Polyclonal
<b>Preservative</b>	0.025% Proclin 300
<b>Isotype</b>	IgG
<b>Purity</b>	Antigen Affinity-purified
<b>Buffer</b>	PBS (pH 7), 20% Glycerol
<b>Target Molecular Weight</b>	34 kDa

**Product Description**

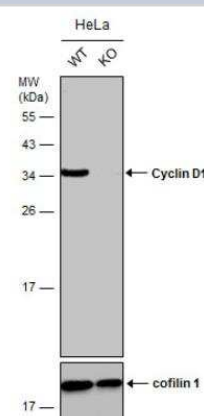
<b>Host</b>	Rabbit
<b>Gene ID</b>	595
<b>Gene Symbol</b>	CCND1
<b>Species</b>	Human, Rat, Canine, Feline
<b>Reactivity Notes</b>	Chicken (86%), Xenopus laevis (80%).
<b>Immunogen</b>	Full length human Cyclin D1 Recombinant protein.

**Product Application Details**

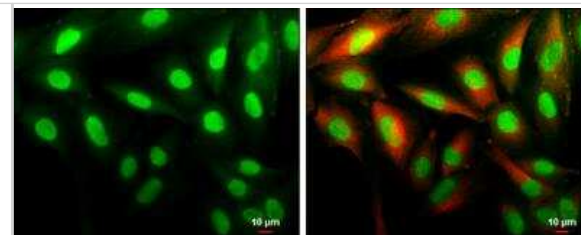
<b>Applications</b>	Western Blot, ELISA, Immunocytochemistry/ Immunofluorescence, Immunoprecipitation, Sandwich ELISA, Knockout Validated
<b>Recommended Dilutions</b>	Western Blot 1:500-1:3000, ELISA 1:1000-1:10000, Immunocytochemistry/ Immunofluorescence 1:100-1:1000, Immunoprecipitation 1:100-1:500, Sandwich ELISA, Knockout Validated

**Images**

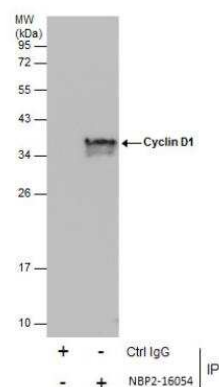
Western Blot: Cyclin D1 Antibody [NBP2-16054] - Wild-type (WT) and Cyclin D1 knockout (KO) HeLa cell extracts (30 ug) were separated by 12% SDS-PAGE, and the membrane was blotted with Cyclin D1 antibody [N1C3]. HRP-conjugated anti-rabbit IgG antibody (NBP2-19301) was used to detect the primary antibody, and the signal was developed with Trident ECL plus-Enhanced.



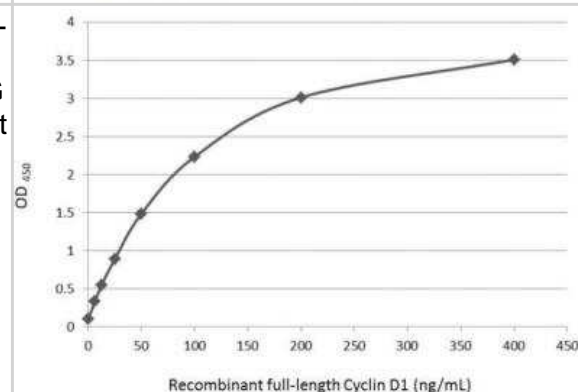
**Immunocytochemistry/Immunofluorescence: Cyclin D1 Antibody [NBP2-16054]** - SK-N-SH cells were fixed in 4% paraformaldehyde at RT for 15 min. Green: Cyclin D1 protein stained by Cyclin D1 antibody [N1C3] diluted at 1:500. Red: beta Tubulin 3/ Tuj1, a cytoskeleton marker, stained by beta Tubulin 3/ Tuj1 antibody [11710] diluted at 1:500. Scale bar = 10  $\mu$ m.



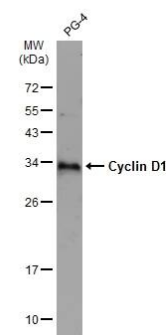
**Immunoprecipitation: Cyclin D1 Antibody [NBP2-16054]** - Immunoprecipitation of Cyclin D1 protein from MCF-7 whole cell extracts using 5  $\mu$ g of Cyclin D1 antibody [N1C3]. Western blot analysis was performed using Cyclin D1 antibody [N1C3]. EasyBlot anti-Rabbit IgG was used as a secondary reagent.



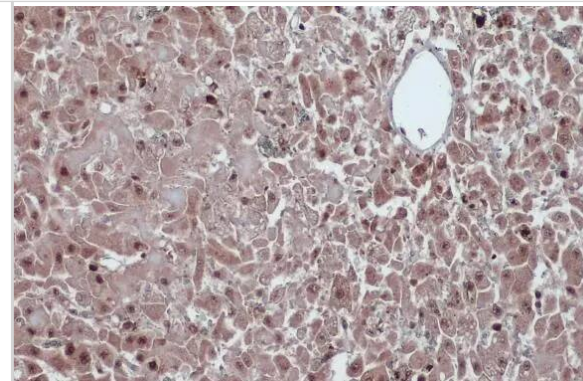
**ELISA: Cyclin D1 Antibody [NBP2-16054]** - Detection of recombinant full-length Cyclin D1 protein using as capture antibody at concentration of 5  $\mu$ g/mL and as detection antibody at concentration of 1  $\mu$ g/mL. Rabbit IgG antibody (HRP) (NBP2-19301) was diluted at 1:10000 and used to detect the primary antibody.



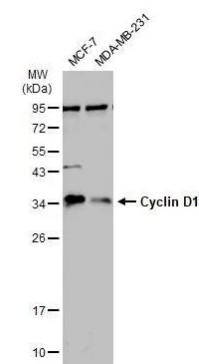
**Western Blot: Cyclin D1 Antibody [NBP2-16054]** - Whole cell extract (30  $\mu$ g) was separated by 12% SDS-PAGE, and the membrane was blotted with Cyclin D1 antibody (NBP2-16054) diluted at 1:5000. The HRP-conjugated anti-rabbit IgG antibody was used to detect the primary antibody, and the signal was developed with Trident ECL plus-Enhanced.



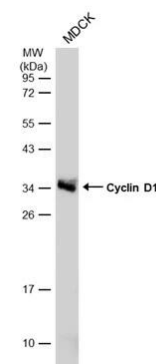
**Immunohistochemistry-Paraffin: Cyclin D1 Antibody [NBP2-16054]** - Cyclin D1 antibody detects Cyclin D1 protein at cytoplasm and nucleus by immunohistochemical analysis. Sample: Paraffin-embedded cat liver. Cyclin D1 stained by Cyclin D1 antibody (NBP2-16054) diluted at 1:500. Antigen Retrieval: Citrate buffer, pH 6.0, 15 min



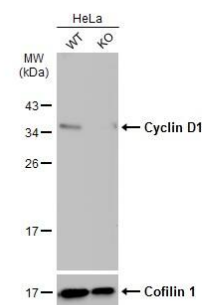
**Western Blot: Cyclin D1 Antibody [NBP2-16054]** - Various whole cell extracts (30 ug) were separated by 12% SDS-PAGE, and the membrane was blotted with Cyclin D1 antibody [N1C3] (NBP2-16054) diluted at 1:500. The HRP-conjugated anti-rabbit IgG antibody was used to detect the primary antibody.



**Western Blot: Cyclin D1 Antibody [NBP2-16054]** - Whole cell extract (30 ug) was separated by 12% SDS-PAGE, and the membrane was blotted with Cyclin D1 antibody (NBP2-16054) diluted at 1:5000. The HRP-conjugated anti-rabbit IgG antibody was used to detect the primary antibody, and the signal was developed with Trident ECL plus-Enhanced.



**Western Blot: Cyclin D1 Antibody [NBP2-16054]** - Wild-type (WT) and Cyclin D1 knockout (KO) HeLa cell extracts (30 ug) were separated by 12% SDS-PAGE, and the membrane was blotted with Cyclin D1 antibody [N1C3] diluted at 1:1000. The HRP-conjugated anti-rabbit IgG antibody was used to detect the primary antibody.



## Publications

Lee JH, Ju-Hyun A, Youn HY Tumour necrosis factor stimulated gene 6 intrinsically regulates PD-L1 expressions in breast cancer cells, leading to modulation of tumour microenvironment Veterinary and comparative oncology 2023-02 -20 [PMID: 36807440]



### **Novus Biologicals USA**

10730 E. Briarwood Avenue  
Centennial, CO 80112  
USA  
Phone: 303.730.1950  
Toll Free: 1.888.506.6887  
Fax: 303.730.1966  
nb-customerservice@bio-techne.com

### **Bio-Techne Canada**

21 Canmotor Ave  
Toronto, ON M8Z 4E6  
Canada  
Phone: 905.827.6400  
Toll Free: 855.668.8722  
Fax: 905.827.6402  
canada.inquires@bio-techne.com

### **Bio-Techne Ltd**

19 Barton Lane  
Abingdon Science Park  
Abingdon, OX14 3NB, United Kingdom  
Phone: (44) (0) 1235 529449  
Free Phone: 0800 37 34 15  
Fax: (44) (0) 1235 533420  
info.EMEA@bio-techne.com

### **General Contact Information**

www.novusbio.com  
Technical Support: nb-technical@bio-techne.com  
Orders: nb-customerservice@bio-techne.com  
General: novus@novusbio.com

### **Products Related to NBP2-16054**

---

HAF008	Goat anti-Rabbit IgG Secondary Antibody [HRP]
NB7160	Goat anti-Rabbit IgG (H+L) Secondary Antibody [HRP]
NBP2-24891	Rabbit IgG Isotype Control
H00000595-P01-10ug	Recombinant Human Cyclin D1 GST (N-Term) Protein

---

### **Limitations**

This product is for research use only and is not approved for use in humans or in clinical diagnosis. Primary Antibodies are guaranteed for 1 year from date of receipt.

For more information on our 100% guarantee, please visit [www.novusbio.com/guarantee](http://www.novusbio.com/guarantee)

Earn gift cards/discounts by submitting a review: [www.novusbio.com/reviews/submit/NBP2-16054](http://www.novusbio.com/reviews/submit/NBP2-16054)

Earn gift cards/discounts by submitting a publication using this product:  
[www.novusbio.com/publications](http://www.novusbio.com/publications)

