

Product Datasheet

beta II Tubulin A Antibody

NBP2-15581

Unit Size: 0.1 ml

Aliquot and store at -20C or -80C. Avoid freeze-thaw cycles.

www.novusbio.com



technical@novusbio.com

Protocols, Publications, Related Products, Reviews, Research Tools and Images at:
www.novusbio.com/NBP2-15581

Updated 9/9/2025 v.20.1

Earn rewards for product
reviews and publications.

Submit a publication at www.novusbio.com/publications

Submit a review at www.novusbio.com/reviews/destination/NBP2-15581



NBP2-15581**beta II Tubulin A Antibody****Product Information**

Unit Size	0.1 ml
Concentration	Concentrations vary lot to lot. See vial label for concentration. If unlisted please contact technical services.
Storage	Aliquot and store at -20C or -80C. Avoid freeze-thaw cycles.
Clonality	Polyclonal
Preservative	0.01% Thimerosal
Isotype	IgG
Purity	Antigen Affinity-purified
Buffer	PBS (pH 7), 20% Glycerol, 1% BSA
Target Molecular Weight	50 kDa

Product Description

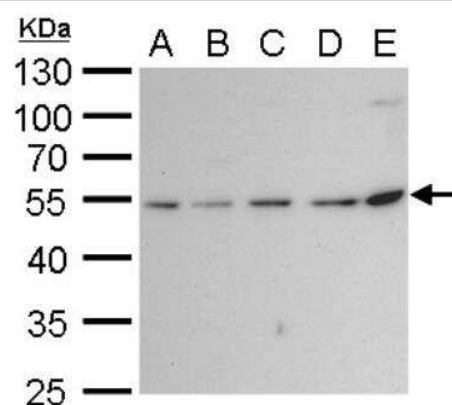
Description	Novus Biologicals Rabbit beta II Tubulin A Antibody (NBP2-15581) is a polyclonal antibody validated for use in IHC, WB and ICC/IF. All Novus Biologicals antibodies are covered by our 100% guarantee.
Host	Rabbit
Gene ID	7280
Gene Symbol	TUBB2A
Species	Human, Mouse, Rat, Drosophila
Immunogen	Recombinant protein encompassing a sequence within the center region of human beta Tubulin 2. The exact sequence is proprietary.

Product Application Details

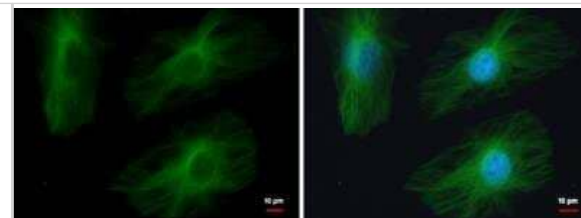
Applications	Western Blot, Immunohistochemistry-Paraffin, Immunocytochemistry/Immunofluorescence, Immunohistochemistry
Recommended Dilutions	Western Blot 1:500-1:3000, Immunohistochemistry 10 - 1:500, Immunocytochemistry/ Immunofluorescence 1:100-1:1000, Immunohistochemistry-Paraffin 1:100-1:1000

Images

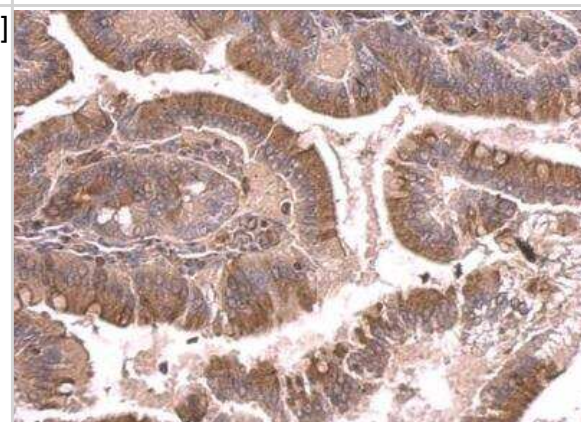
Western Blot: beta II Tubulin A Antibody [NBP2-15581] - beta II Tubulin A Antibody detects beta II Tubulin A protein by western blot analysis. A. 30 ug C8D30 whole cell lysate/extract. B. 30 ug NIH-3T3 whole cell lysate/extract. C. 30 ug BCL-1 whole cell lysate/extract. D. 30 ug Raw 264.7 whole cell lysate/extract. E. 30 ug C2C12 whole cell lysate/extract. 10 % SDS-PAGE. beta II Tubulin A Antibody dilution: 1:2000



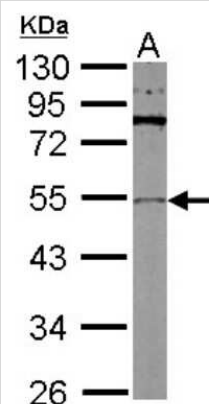
Immunocytochemistry/Immunofluorescence: beta II Tubulin A Antibody [NBP2-15581] - HeLa cells were fixed in 4% paraformaldehyde/PBS for 15 min. Green: TUBB2A protein stained by TUBB2A antibody diluted at 1:500. Blue: Hoechst 33342 staining.



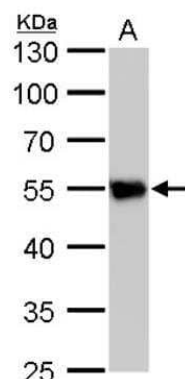
Immunohistochemistry-Paraffin: beta II Tubulin A Antibody [NBP2-15581] - Mouse duodenum. beta Tubulin 2 antibody dilution: 1:500. Antigen Retrieval: Trilogy™ (EDTA based, pH 8.0) buffer, 15min.



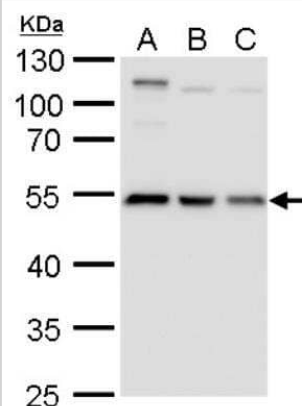
Western Blot: beta II Tubulin A Antibody [NBP2-15581] - Sample (30 ug of whole cell lysate) A: Drosophila lysate 10% SDS PAGE gel, diluted at 1:1000.



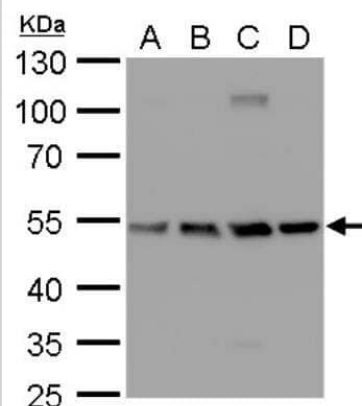
Western Blot: beta II Tubulin A Antibody [NBP2-15581] - A. 50 ug rat brain lysate/extract 10 % SDS-PAGE beta Tubulin 2 antibody dilution: 1:2000



Western Blot: beta II Tubulin A Antibody [NBP2-15581] - beta II Tubulin A Antibody detects beta II Tubulin A protein by western blot analysis. A. 30 ug Jurkat whole cell lysate/extract. B. 30 ug Raji whole cell lysate/extract. C. 30 ug NCI-H929 whole cell lysate/extract. 10 % SDS-PAGE. beta II Tubulin A Antibody dilution: 1:2000.



Western Blot: beta II Tubulin A Antibody [NBP2-15581] - beta II Tubulin A Antibody detects beta II Tubulin A protein by western blot analysis. A. 30 ug U87-MG whole cell lysate/extract. B. 30 ug SK-N-SH whole cell lysate/extract. C. 30 ug IMR32 whole cell lysate/extract. D. 30 ug SK-N-AS whole cell lysate/extract. 10 % SDS-PAGE. beta II Tubulin A Antibody dilution: 1:2000





Novus Biologicals USA

10730 E. Briarwood Avenue
Centennial, CO 80112
USA
Phone: 303.730.1950
Toll Free: 1.888.506.6887
Fax: 303.730.1966
nb-customerservice@bio-techne.com

Bio-Techne Canada

21 Canmotor Ave
Toronto, ON M8Z 4E6
Canada
Phone: 905.827.6400
Toll Free: 855.668.8722
Fax: 905.827.6402
canada.inquires@bio-techne.com

Bio-Techne Ltd

19 Barton Lane
Abingdon Science Park
Abingdon, OX14 3NB, United Kingdom
Phone: (44) (0) 1235 529449
Free Phone: 0800 37 34 15
Fax: (44) (0) 1235 533420
info.EMEA@bio-techne.com

General Contact Information

www.novusbio.com
Technical Support: nb-technical@bio-techne.com
Orders: nb-customerservice@bio-techne.com
General: novus@novusbio.com

Products Related to NBP2-15581

HAF008	Goat anti-Rabbit IgG Secondary Antibody [HRP]
NB7160	Goat anti-Rabbit IgG (H+L) Secondary Antibody [HRP]
NBP2-24891	Rabbit IgG Isotype Control
H00007280-P02-10ug	Recombinant Human beta II Tubulin A GST (N-Term) Protein

Limitations

This product is for research use only and is not approved for use in humans or in clinical diagnosis. Primary Antibodies are guaranteed for 1 year from date of receipt.

For more information on our 100% guarantee, please visit www.novusbio.com/guarantee

Earn gift cards/discounts by submitting a review: www.novusbio.com/reviews/submit/NBP2-15581

Earn gift cards/discounts by submitting a publication using this product:
www.novusbio.com/publications

