

Product Datasheet

Bcl-2 Antibody (100/D5) NBP2-15200-0.1mg

Unit Size: 0.1 mg

Store at 4C.

www.novusbio.com



technical@novusbio.com

Publications: 11

Protocols, Publications, Related Products, Reviews, Research Tools and Images at:
www.novusbio.com/NBP2-15200

Updated 10/23/2024 v.20.1

Earn rewards for product reviews and publications.

Submit a publication at www.novusbio.com/publications

Submit a review at www.novusbio.com/reviews/destination/NBP2-15200



NBP2-15200-0.1mg

Bcl-2 Antibody (100/D5)

Product Information	
Unit Size	0.1 mg
Concentration	0.2 mg/ml
Storage	Store at 4C.
Clonality	Monoclonal
Clone	100/D5
Preservative	0.05% Sodium Azide
Isotype	IgG1 Kappa
Purity	Protein A or G purified
Buffer	10 mM PBS with 0.05% BSA

Product Description	
Description	200ug/ml of antibody purified from Bioreactor Concentrate by Protein A or G. Prepared in 10 mM PBS with 0.05% BSA & 0.05% azide. Also available WITHOUT BSA & azide at 1.0 mg/ml. (NBP2-33315) Antibody with azide - store at 2 to 8C. Antibody without azide - store at -20 to -80 C.
Host	Mouse
Gene ID	596
Gene Symbol	BCL2
Species	Human, Mouse (Negative), Rat (Negative)
Reactivity Notes	Does not react with Mouse or Rat.
Marker	Apoptosis & Follicular Lymphoma Marker
Specificity/Sensitivity	This antibody recognizes a protein of 25-26kDa, identified as the Bcl-2 alpha oncoprotein. It shows no cross-reaction with Bcl-x or Bax protein. Expression of Bcl-2 alpha oncoprotein inhibits the programmed cell death (apoptosis). In most follicular lymphomas, neoplastic germinal centers express high levels of Bcl-2 alpha protein, whereas the normal or hyperplastic germinal centers are negative. Consequently, this antibody is valuable when distinguishing between reactive and neoplastic follicular proliferation in lymph node biopsies. It may also be used in distinguishing between those follicular lymphomas that express Bcl-2 protein and the small number in which the neoplastic cells are Bcl-2 negative.
Immunogen	A synthetic peptide, aa41-54 (GAAPAPGIFSSQPG-Cys) of human Bcl-2 protein. (Uniprot: P10415)

Product Application Details	
Applications	Western Blot, Flow Cytometry, Flow (Intracellular), Immunocytochemistry/ Immunofluorescence, Immunohistochemistry, Immunohistochemistry-Frozen, Immunohistochemistry-Paraffin, Immunoprecipitation
Recommended Dilutions	Western Blot 1-2 ug/ml, Flow Cytometry 1-2 ug/million cells, Immunohistochemistry, Immunocytochemistry/ Immunofluorescence 1-2 ug/ml, Immunoprecipitation, Immunohistochemistry-Paraffin 1-2 ug/ml, Immunohistochemistry-Frozen 0.5-1ug/ml, Flow (Intracellular)

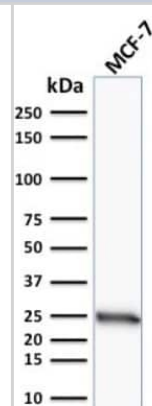


Application Notes

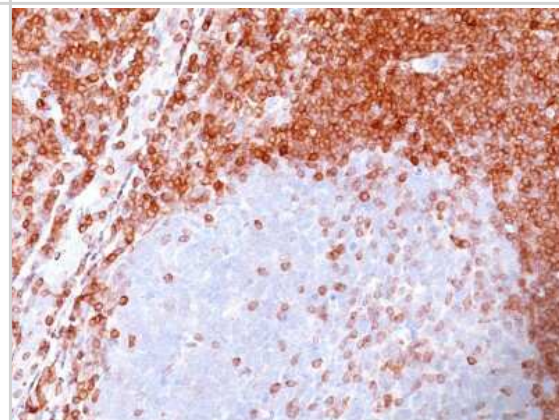
Use in IP reported in scientific literature (PMID:35304128)
 Immunohistochemistry (Formalin-fixed): 1-2ug/ml for 30 minutes at RT. Staining of formalin-fixed tissues requires heating tissue sections in 10mM Tris with 1mM EDTA, pH 9.0, for 45 min at 95C followed by cooling at RT for 20 minutes. Optimal dilution for a specific application should be determined..

Images

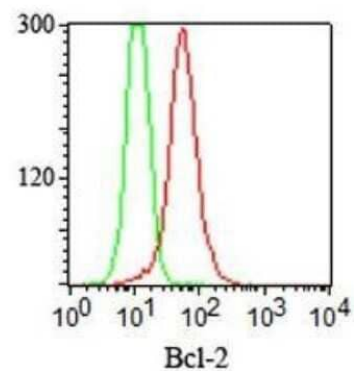
Western Blot: Bcl-2 Antibody (100/D5) [NBP2-15200] - Western Blot Analysis of human MCF-7 cell lysate using Bcl-2 Antibody (100/D5).



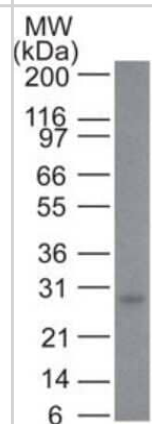
Immunohistochemistry-Paraffin: Bcl-2 Antibody (100/D5) [NBP2-15200] - Formalin-paraffin non-Hodgkin's lymphoma stained with Bcl-2 Ab (100/D5). Note nuclear membrane & cytoplasmic staining.



Flow Cytometry: Bcl-2 Antibody (100/D5) [NBP2-15200] - Intracellular staining of Bcl-2 in fixed and permeabilized Jurkat cells using Bcl-2 antibody (red) and isotype control (green) at 0.5 ug/10⁶ cells.



Western Blot: Bcl-2 Antibody (100/D5) [NBP2-15200] - analysis of Bcl-2 in human skin using Bcl-2 antibody at 2 ug/ml.



Publications

Sevinc SK, Karadeniz M, Sen A et al. Apoptotic and antiproliferative effects of *Urtica dioica* L. extract on K562 chronic myeloid leukemia cell line Indian Journal of Experimental Biology 2023-11-01 (WB)

Tian D, You X, Ye J et al. BMSCs overexpressing hBcl2 can resist myelin-induced apoptosis and promote repair after spinal cord injury in rats Research Square 2023-08-28 (IHC, ICC/IF, WB, Rat, Mouse)

Details:

WB dilution 1:100; ICC/If dilution 1:100; IHC dilution 1:100

Kocyyigit Sevinc S, Karadeniz M, Sen A et al. Biological Effects of *Urtica Dioica* Extract on K562 Chronic Myeloid Leukemia Cell Line SSRN Electronic Journal 2022-10-29 (WB, Human)

Mandic M, Misirkic Marjanovic M, Vucicevic L et al. MAP kinase-dependent autophagy controls phorbol myristate acetate-induced macrophage differentiation of HL-60 leukemia cells Life sciences 2022-05-15 [PMID: 35304128] (IP, Human)

Mega Tiber P, Kocyyigit Sevinc S, Kilinc O, Orun O Biological effects of whole *Z.Officinale* extract on chronic myeloid leukemia cell line K562. Gene. 2019-04-15 [PMID: 30684525] (WB, Human)

Details:

Citation using the Azide free version of this antibody.

Pradhan N, Pratheek BM, Garai A et al. Induction of apoptosis by Fe(salen)Cl through caspase-dependent pathway specifically in tumor cells. Cell Biol. Int. 2014-05-07 [PMID: 24804954] (Flow Cytometry Control, Human)

Details:

Mouse splenocytes, human PBMC, Jurkat, EL4: Fig 5. GADPH was detected at ~36 kDa.

Kaur P, Kallakury BS, Sheehan CE et al. Survivin and Bcl-2 expression in prostatic adenocarcinomas. Arch Pathol Lab Med. 2004-01-01 [PMID: 14692814] (IHC-P)

Details:

IHC (paraffin): Prostate adenocarcinoma, Figs 2,3.

Kren L, Brazdil J, Hermanova M et al. Prognostic significance of anti-apoptosis proteins survivin and bcl-2 in non-small cell lung carcinomas: a clinicopathologic study of 102 cases. Appl Immunohistochem Mol Morphol. 2004-03-01 [PMID: 15163019] (IHC-P)

Details:

IHC (paraffin): lung cancer.

Moschovi M, Koultouki E, Stefanaki K et al. Prognostic significance of angiogenesis in relation to Ki-67, p-53, p-27, and bcl-2 expression in embryonal tumors. Pediatr Neurosurg. 2011-01-01 [PMID: 22309998] (IHC-P)

Details:

IHC (paraffin): Embryonal tumors, Table 1.

Tralongo V, Becchina G, Nagar C et al. Primary follicular lymphoma of the epididymis positive for t(14;18) (q32;q21)/IGH-BCL2 and negative for BCL2 protein expression: a case report. J Med Case Rep. 2012-01-18 [PMID: 22257663] (IHC-P)

Pezzella F, Tse AG, Cordell JL et al. Expression of the bcl-2 oncogene protein is not specific for the 14;18 chromosomal translocation. Am J Pathol. 1990-08-01 [PMID: 2201196] (ICC/IF, IHC-Fr, WB, IHC-P)

Details:

WB: Fig 1 (normal human spleen), the Bcl-2 alpha isoform was detected in both reducing and non-reducing conditions. IHC (frozen)/ IHC (paraffin)/ IF/ICC: Various human cell types and tissues: Figs 2,7 and Tables 1-3. See publication for specific staining



Novus Biologicals USA

10730 E. Briarwood Avenue
Centennial, CO 80112
USA
Phone: 303.730.1950
Toll Free: 1.888.506.6887
Fax: 303.730.1966
nb-customerservice@bio-techne.com

Bio-Techne Canada

21 Canmotor Ave
Toronto, ON M8Z 4E6
Canada
Phone: 905.827.6400
Toll Free: 855.668.8722
Fax: 905.827.6402
canada.inquires@bio-techne.com

Bio-Techne Ltd

19 Barton Lane
Abingdon Science Park
Abingdon, OX14 3NB, United Kingdom
Phone: (44) (0) 1235 529449
Free Phone: 0800 37 34 15
Fax: (44) (0) 1235 533420
info.EMEA@bio-techne.com

General Contact Information

www.novusbio.com
Technical Support: nb-technical@bio-techne.com
Orders: nb-customerservice@bio-techne.com
General: novus@novusbio.com

Products Related to NBP2-15200-0.1mg

HAF007	Goat anti-Mouse IgG Secondary Antibody [HRP]
NB720-B	Rabbit anti-Mouse IgG (H+L) Secondary Antibody [Biotin]
NBP1-43319-0.5mg	Mouse IgG1 Kappa Isotype Control (P3.6.2.8.1)
NBP2-34889-100ug	Recombinant Human Bcl-2 Protein

Limitations

This product is for research use only and is not approved for use in humans or in clinical diagnosis. Primary Antibodies are guaranteed for 1 year from date of receipt.

For more information on our 100% guarantee, please visit www.novusbio.com/guarantee

Earn gift cards/discounts by submitting a review: www.novusbio.com/reviews/submit/NBP2-15200

Earn gift cards/discounts by submitting a publication using this product:
www.novusbio.com/publications

